

**SUMMIT EDEN**  
 PHASE 1 PRUD SUBMITTAL

POWDER MOUNTAIN, WEBER COUNTY, UTAH



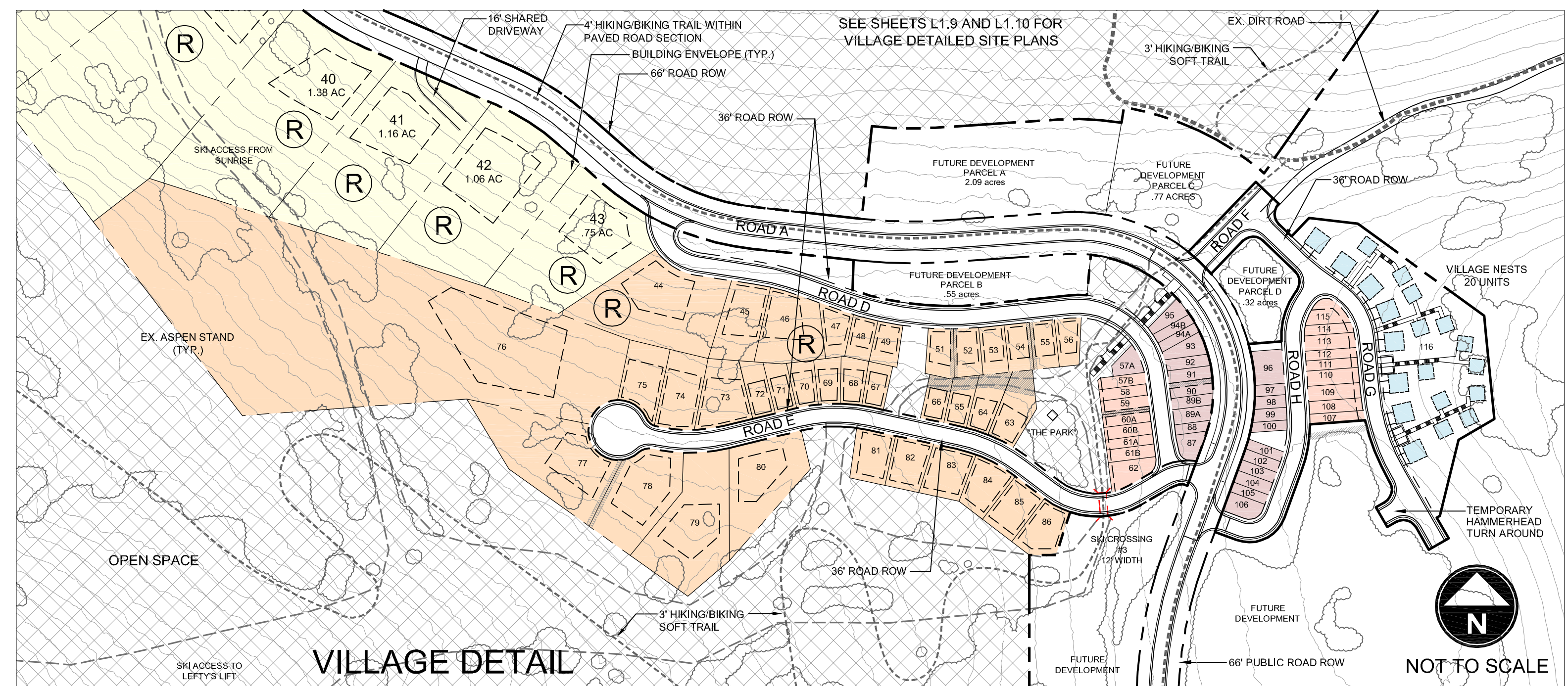
**LOT LEGEND AND MIN. SETBACK STANDARDS**

	<b>RANCH SINGLE FAMILY</b> FRONT 50' SIDES 20' REAR 30'
	<b>ESTATE SINGLE FAMILY</b> FRONT 20' SIDES 10' REAR 30'
	<b>CABIN SINGLE FAMILY</b> FRONT 20' SIDES 15' REAR 30'
	<b>HILLSIDE SINGLE FAMILY</b> FRONT 5' SIDES 5' REAR 20'
	<b>VILLAGE SINGLE FAMILY</b> FRONT 0' SIDES 0' REAR 5'
	<b>VILLAGE LIVE/WORK SINGLE FAMILY</b> FRONT 0' SIDES 0' REAR 0'
	<b>NESTS</b> FRONT 0' SIDES 0' REAR 0'

**(R)** RESTRICTED LOT

**PRUD DEVELOPMENT DATA**

TOTAL PRUD BOUNDARY AREA	594.23 ACRES
ZONE FV-3 AREA	392.04 ACRES
ZONE F-40 AREA	194.83 ACRES
ZONE CVR-1 AREA	2.46 ACRES
CACHE COUNTY AREA	4.90 ACRES
ROAD ROW AREA SLOPES > 40%	18.96 ACRES
NET DEVELOPABLE AREA	463.42 ACRES
PROPOSED LOTS	116 LOTS
PROPOSED UNITS	154 UNITS
RANCH SINGLE FAMILY	6 UNITS
ESTATE SINGLE FAMILY	26 UNITS
CABIN SINGLE FAMILY	11 UNITS
HILLSIDE SINGLE FAMILY	36 UNITS
VILLAGE SINGLE FAMILY	17 UNITS
VILLAGE LIVE/WORK SF	23 UNITS
NESTS	35 UNITS
PROPOSED DENSITY	1 UNIT/3.85 ACRES
PROPOSED OPEN SPACE	384.19 ACRES (64.6%)



DATE:	JUNE 17, 2013
PROJECT:	000.0000.00
DRAWN BY:	EL
REVIEW BY:	EL
VERSION:	PRUD
REVISIONS:	

SHEET TITLE:  
**OVERALL SITE PLAN**

SHEET NUMBER:  
**L1.2**