

PIEDMONT RESERVOIR LAKE

ANDERSON COVE NATIONAL CAMPGROUND

to OGDEN

HWY 39

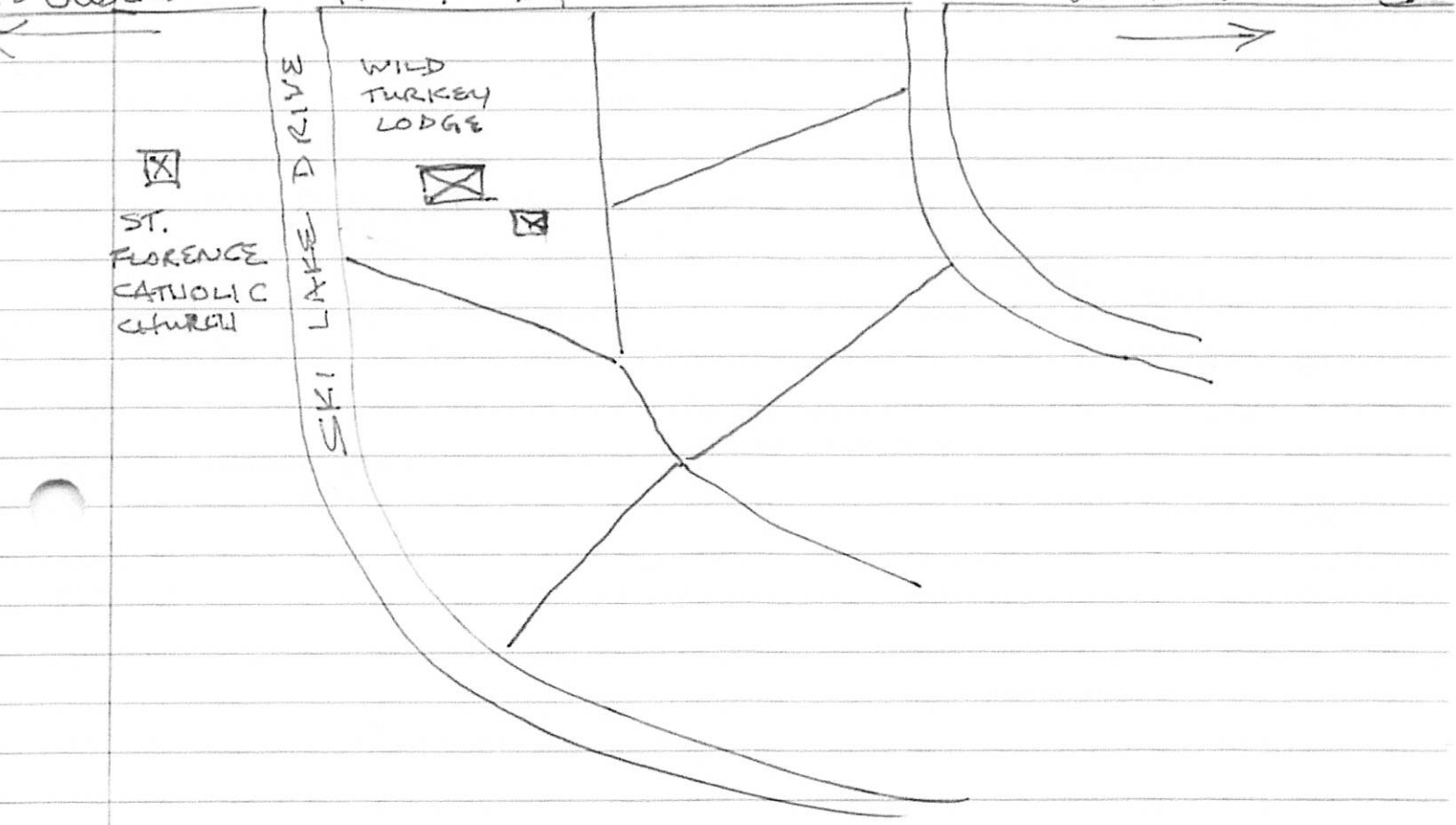
to HUNTSVILLE



☒
ST.
FLORENCE
CATHOLIC
CHURCH

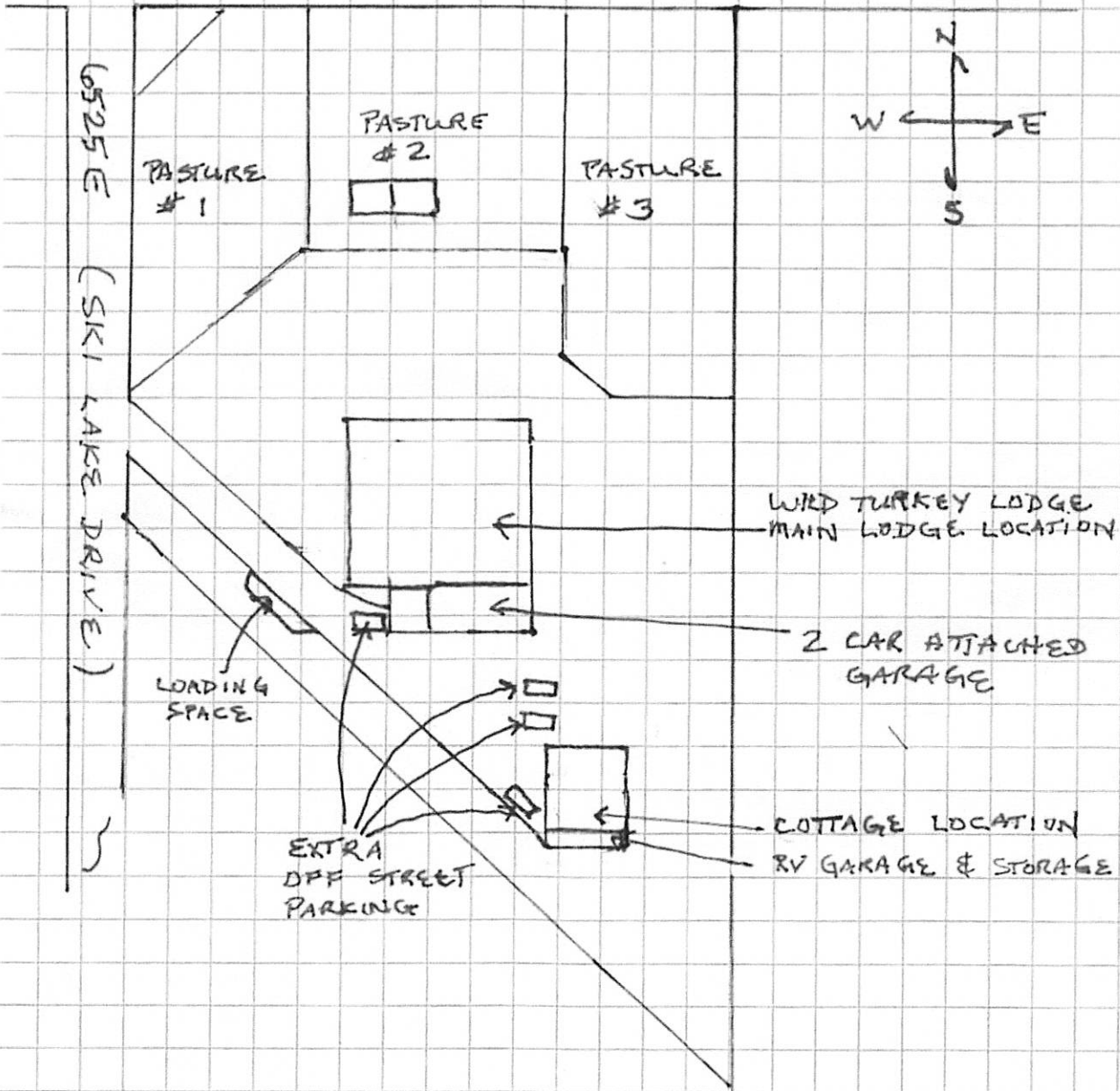
BAIRD
LAKE
SHUTTLE

WILD
TURKEY
LODGE



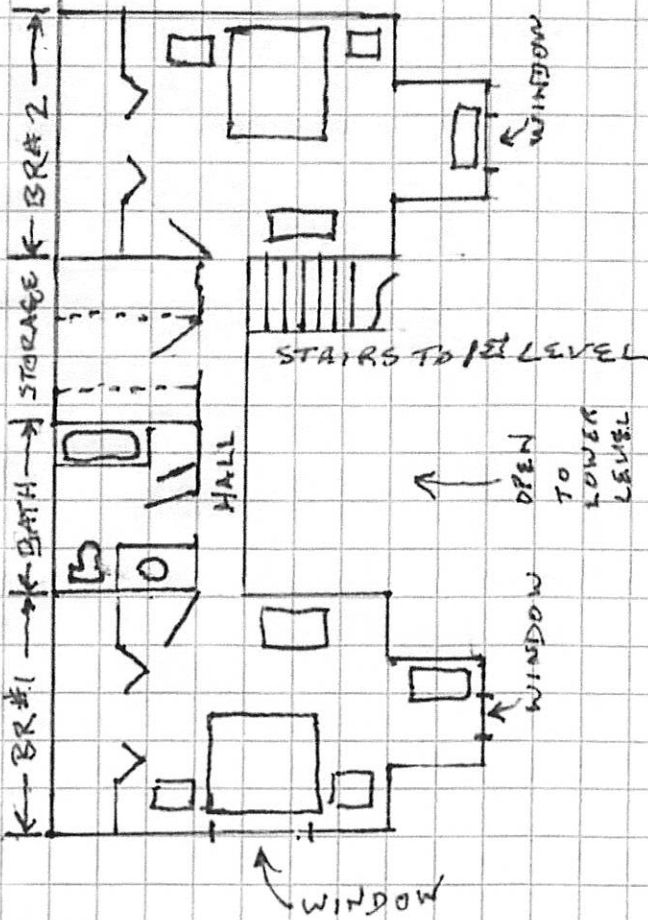
ANDERSON COVE NATIONAL CAMPGROUND

HWY 39



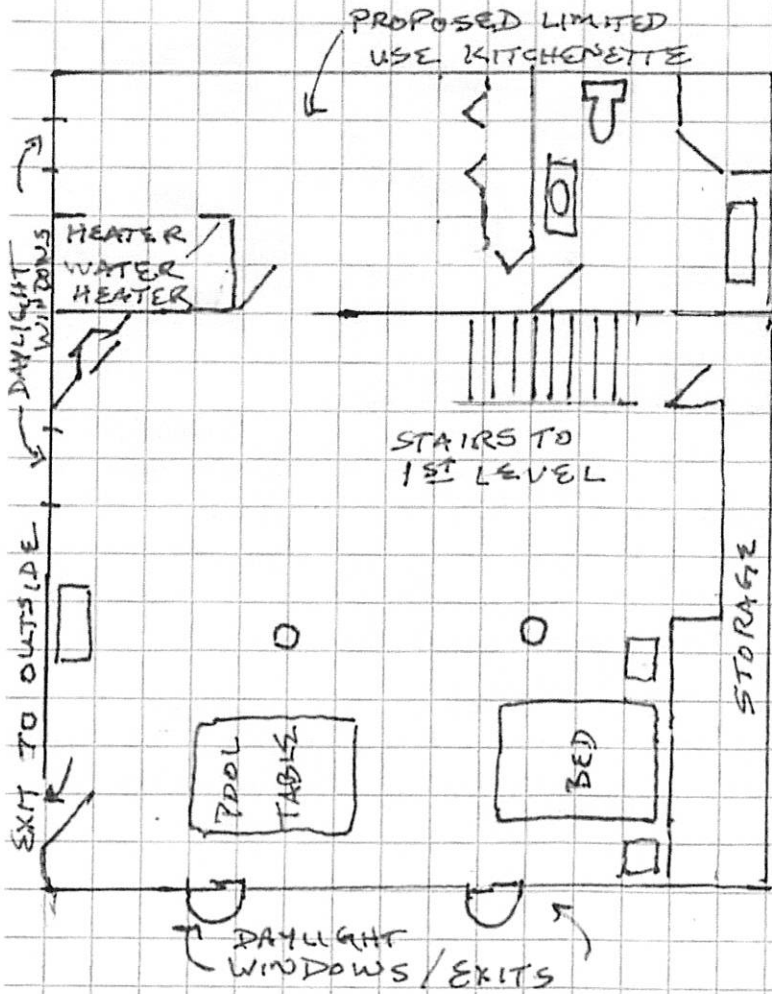
WILD TURKEY LODGE
932 SKI LAKE DRIVE
HUNTSVILLE, UTAH 84317
(802) 748-1890

SPACE #1
 ENTIRE SECOND
 STORY LEVEL WITH PRIVATE
 FULL BATH FOR A SINGLE
 FAMILY BOOKING (WITH OR
 WITHOUT CHILDREN)



WILD TURKEY LODGE
 932 SKI LAKE DRIVE
 HUNTSVILLE, UTAH 84317
 (808) 748-1890

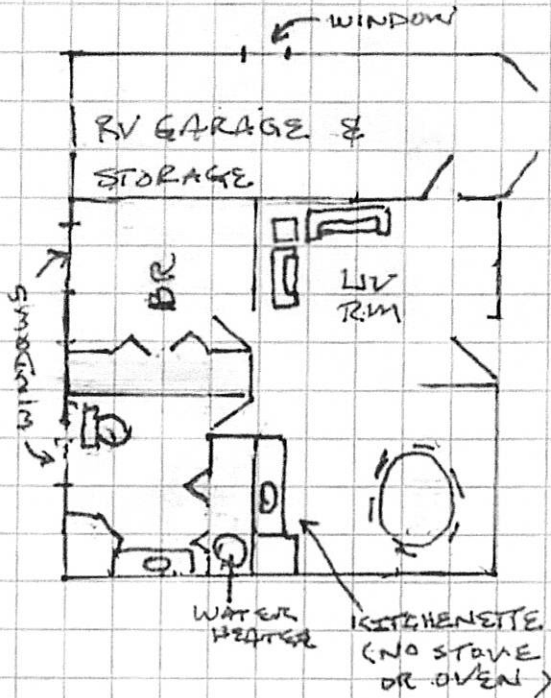
SPACE #2 A FULL WALKOUT
 BASEMENT WITH ONE QUEEN
 BED, 1 SOFA BED AND SEATING
 AREA WITH GAS FIREPLACE, POOL
 TABLE, DINETTE TABLE / 6 CHAIRS,
 A PRIVATE FULL BATH, AND
 PROPOSED LIMITED USE KITCHENETTE.
 (NO STOVE OR OVEN.)



WILD TURKEY LODGE
 932 SKI LAKE DRIVE
 HUNTSVILLE, UTAH 84317
 (808) 748-1890

SPACE #3 ONE BEDROOM COTTAGE
 WITH A QUEEN BED, A LIVING ROOM
 WITH A SEATING AREA, A DINING
 TABLE (4-CHAIRS), A PRIVATE
 FULL BATH, AND A LIMITED -
 USE KITCHENETTE WITH A
 SMALL REFRIGERATOR (NO
 STOVE OR OVEN.)
 HANDICAP ACCESSIBLE SPACE

GARAGE 9'x30'	270 #
COTTAGE 19'x30'	585 #
	<hr/> 855 #



WILD TURKEY LODGE
 932 SKI LAKE DRIVE
 HUNTSVILLE, UTAH 84317
 (808) 748-1890