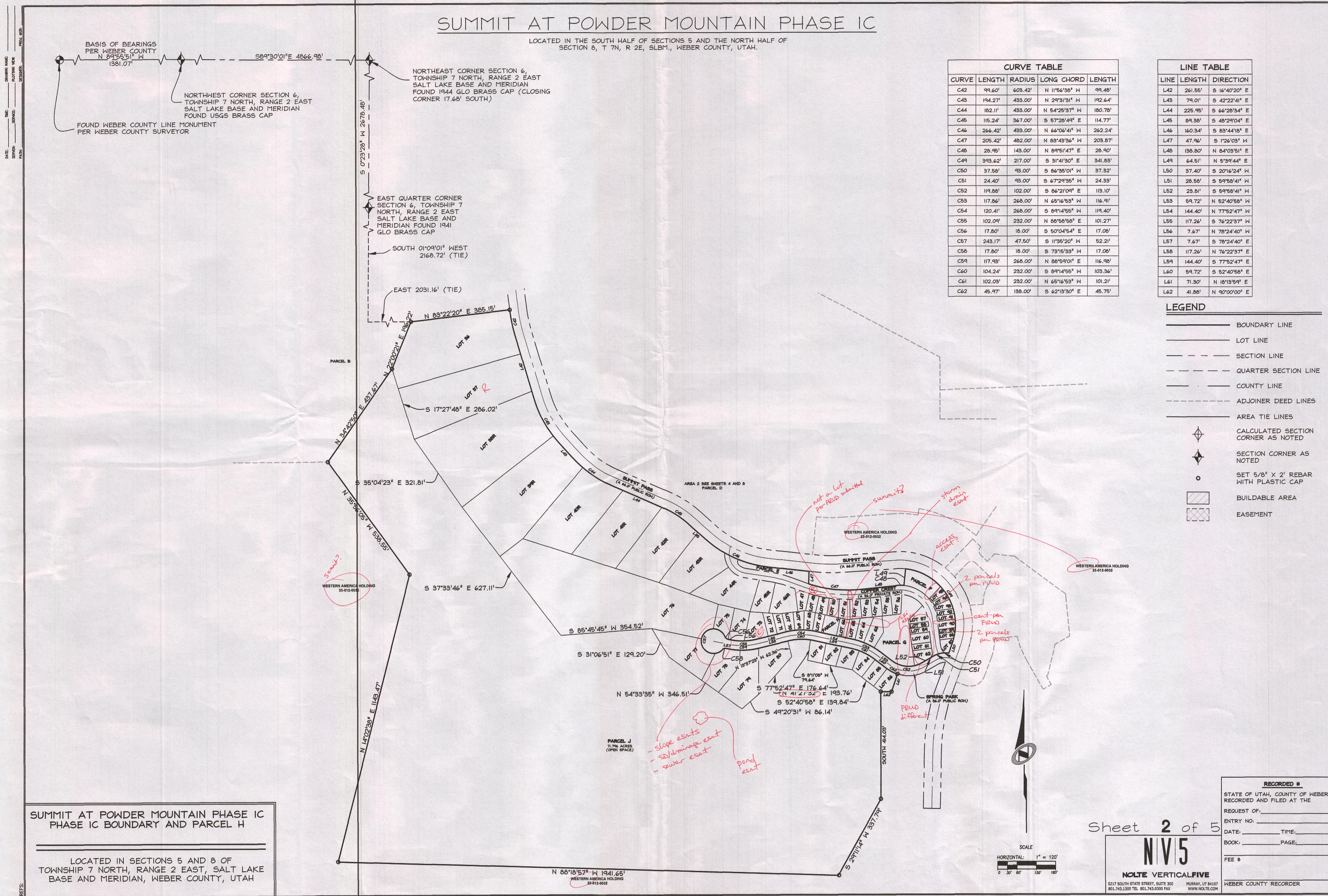


SUMMIT AT POWDER MOUNTAIN PHASE 1C

LOCATED IN THE SOUTH HALF OF SECTIONS 5 AND THE NORTH HALF OF SECTION 8, T 7N, R 2E, SLB1., WEBER COUNTY, UTAH.



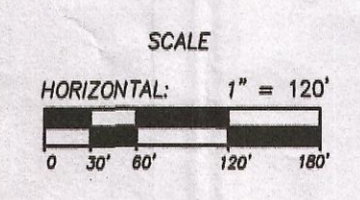
CURVE	LENGTH	RADIUS	LONG CHORD	LENGTH
C42	99.60'	605.42'	N 11°56'38" W	99.48'
C43	194.27'	433.00'	N 29°31'31" W	192.64'
C44	182.11'	433.00'	N 54°25'37" W	180.78'
C45	115.24'	367.00'	S 57°28'49" E	114.77'
C46	266.42'	433.00'	N 66°06'41" W	262.24'
C47	205.42'	482.00'	N 83°43'36" W	203.87'
C48	28.95'	143.00'	N 84°51'47" E	28.90'
C49	393.62'	217.00'	S 31°41'30" E	341.83'
C50	37.58'	93.00'	S 86°35'01" W	37.32'
C51	24.40'	93.00'	S 67°29'35" W	24.33'
C52	119.88'	102.00'	S 86°21'09" E	119.10'
C53	117.86'	268.00'	N 65°16'53" W	116.91'
C54	120.41'	268.00'	S 84°14'55" W	119.40'
C55	102.09'	232.00'	N 88°58'58" E	101.27'
C56	17.80'	18.00'	S 50°04'54" E	17.08'
C57	243.17'	47.50'	S 11°35'20" W	52.21'
C58	17.80'	18.00'	S 73°15'33" W	17.08'
C59	117.93'	268.00'	N 88°58'58" E	116.98'
C60	104.24'	232.00'	S 84°14'55" W	103.36'
C61	102.03'	232.00'	N 65°16'53" W	101.21'
C62	45.97'	138.00'	S 62°13'30" E	45.75'

LINE	LENGTH	DIRECTION
L42	261.55'	S 16°40'20" E
L43	79.01'	S 42°22'41" E
L44	225.95'	S 66°28'34" E
L45	89.38'	S 48°29'04" E
L46	160.34'	S 83°44'18" E
L47	47.96'	S 1°26'03" W
L48	138.80'	N 84°03'51" E
L49	64.51'	N 5°39'44" E
L50	37.40'	S 20°16'24" W
L51	28.58'	S 59°58'41" W
L52	23.81'	S 59°58'41" W
L53	69.72'	N 52°40'58" E
L54	144.40'	N 77°52'47" W
L55	117.26'	S 76°22'37" W
L56	7.67'	N 78°24'40" W
L57	7.67'	S 78°24'40" E
L58	117.26'	N 76°22'37" E
L59	144.40'	S 77°52'47" E
L60	69.72'	S 52°40'58" E
L61	71.30'	N 18°13'59" E
L62	41.88'	N 90°00'00" E

- LEGEND**
- BOUNDARY LINE
 - LOT LINE
 - SECTION LINE
 - QUARTER SECTION LINE
 - COUNTY LINE
 - ADJOINER DEED LINES
 - AREA TIE LINES
 - CALCULATED SECTION CORNER AS NOTED
 - SECTION CORNER AS NOTED
 - SET 5/8" X 2' REBAR WITH PLASTIC CAP
 - BUILDABLE AREA
 - EASEMENT

**SUMMIT AT POWDER MOUNTAIN PHASE 1C
PHASE 1C BOUNDARY AND PARCEL H**

LOCATED IN SECTIONS 5 AND 8 OF
TOWNSHIP 7 NORTH, RANGE 2 EAST, SALT LAKE
BASE AND MERIDIAN, WEBER COUNTY, UTAH



Sheet 2 of 5

N1V5
NOLTE VERTICAL FIVE
 5217 SOUTH STATE STREET, SUITE 300 MURRAY, UT 84107
 801.743.1300 TEL 801.743.0300 FAX WWW.NOLTE.COM

RECORDED #
 STATE OF UTAH, COUNTY OF WEBER,
 RECORDED AND FILED AT THE
 REQUEST OF:
 ENTRY NO.:
 DATE: TIME:
 BOOK: PAGE:
 FEE \$
 WEBER COUNTY RECORDER