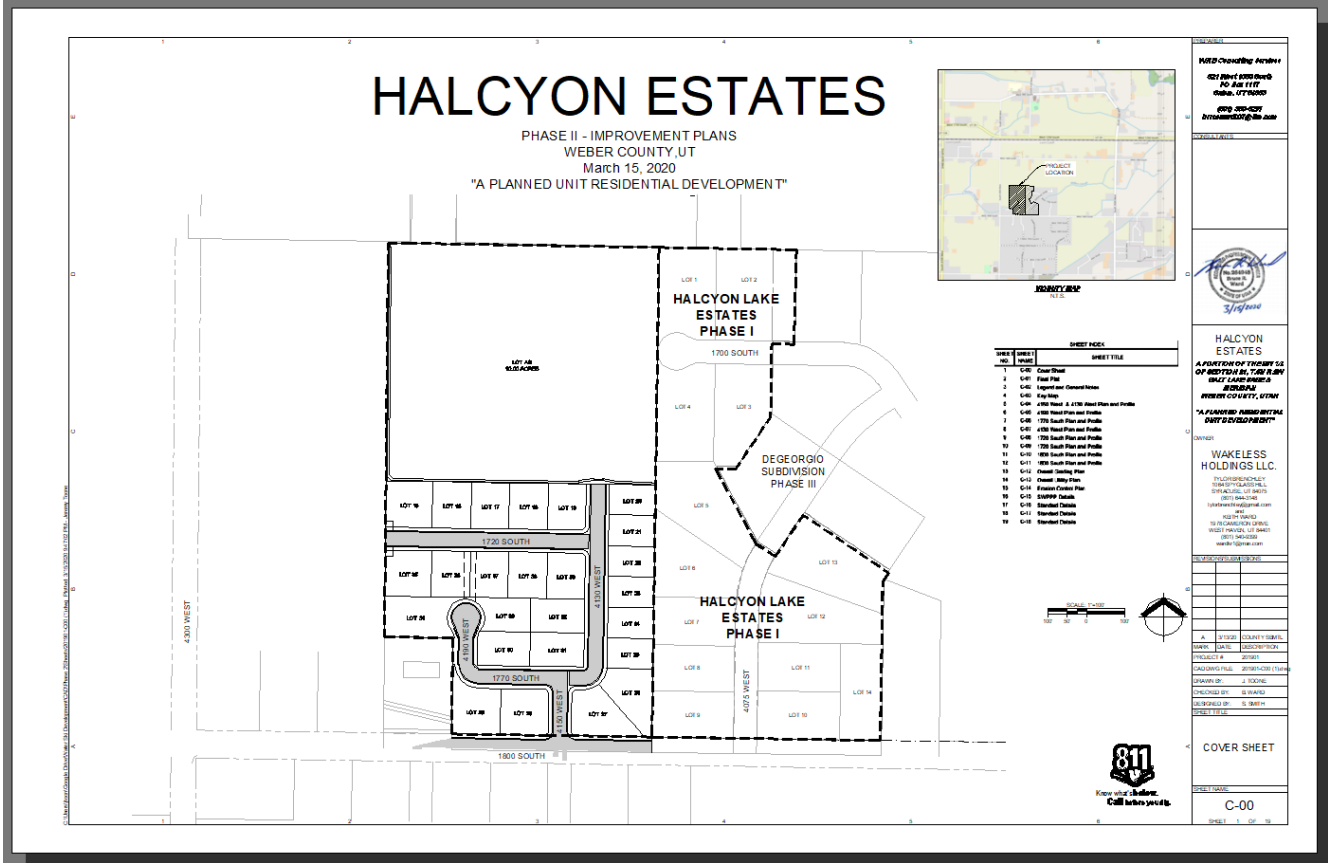


# HALCYONESTATES PHASE II

## DRAINAGE SUMMARY

MAY 2020



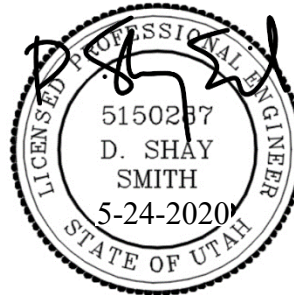
**Prepared for:**

Wakeless Holdings LLC

**Prepared By:**

WRB Consulting Services

D. Shay Smith, PE,



## Project Description.

Halcyon Estates Phase II is a Proposed PRUD with in Weber County and is generally located at the intersection of 1800 S and 4150 W. Runoff flows and retention volumes for development have been analyzed using both the rational method and the 90<sup>th</sup> percentile rainfall depth. The 90<sup>th</sup> percentile rainfall depth was obtained using historical data from NOAA's Climate Data Online: Dataset Discovery. The retention requirements were governed by the rational method for the 100 yr. 1 hr storm with a 0.1 cfs release rate but just slightly over the retention requirement from the 90<sup>th</sup> percentile storm.



Figure 1- Drainage Areas

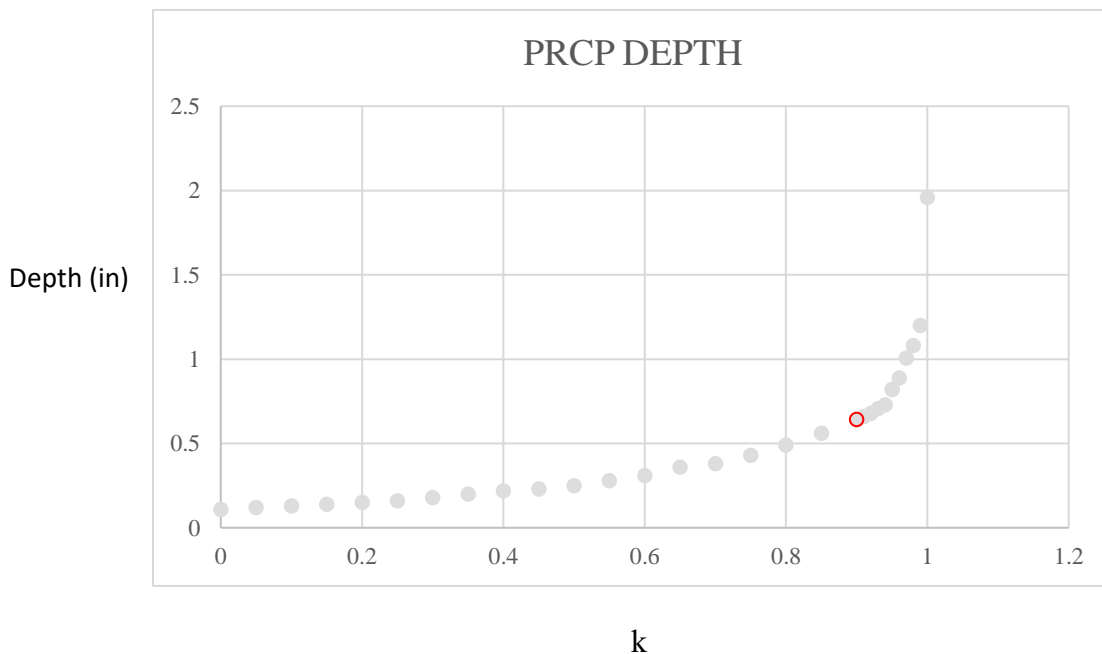
Lots will retain stormwater volumes individually with the exception of lots 27, 28 and 34, which will retain both the lot and ROW volumes.

### 90th Percentile Rainfall Depth

The “DWQ Guidance for Calculation of 90th Percentile Storm Event” states:

*The 90th percentile rainfall depth represents the depth of rainfall which is not exceeded in 90 percent of all runoff producing rainfall events within the time period analyzed. In other words, 90 percent of the rainfall storm events that produce runoff will be less than or equal to this depth. The majority of Utah MS4s have a 90th percentile rainfall depth of between 0.6 –0.7 inches.*

Daily rainfall depths from station US1UTWB0001, between July 2008 and March 2020, were obtained from NOAA. This data was filtered to remove storm events that were under 0.1 inches and then the 90<sup>th</sup> percentile depth was found using excels percentile function. The following PRCP Depth graph show the rainfall depths for the different k-percentiles. For the 90<sup>th</sup> percentile the Rainfall Depth is **0.641** inch. Rainfall depths form NOAA are shown in the appendix.



## Flow and Volume Calculations

The ROW for Phase 2 of the PRUD is distributed into 3 drainage areas for flow calculations, B-1, B-2, B-3. These basins are combined for the total storage volume requirements for Basin B, located on lot 27.

Flow requirements for 10-yr Q (cfs)

<i>Catchment Basin</i>	<i>Area (ac)</i>	<i>C</i>	<i>Tc (min)</i>	<i>CA</i>	<i>I (in / hr)</i>	<i>Q (cfs)</i>
A-1	1.74	0.50	15.00	0.87	2.04	1.78
A-2	3.25	0.53	15.00	1.73	2.04	3.53
A-3	0.98	0.52	15.00	0.51	2.04	1.03

Storage requirements for 100-yr Vol. (gal)

<i>Drainage Basin</i>	<i>Volume Req</i>	<i>Storage Basin</i>	<i>Vol. Provided</i>	<i>Check</i>
A-1 through A-3	23,638.15	B-1	24,565.50	OK

## Flow, Volume and Pipe Calculations

Storm water flows from the three drainage basins are routed to storage basin B-1 for the required rainfall events. Flow calculations are based on the 10 yr. storm event. Volumes calculation look at both the 90<sup>th</sup> percentile storm depths and rainfall for the 1, 3, 6, 12, and 24-hour intensities. The most restrictive result was used to size basin B-1.

Refer to grading plan for retention basin layout and location.

### 10 yr Flow Calculations

Halcyon Lake - Storm Drainage Calculations (Rational Method)							
Catchment Basin	Area (ac)	Area (sf)	C	Tc (min)	CA	I (in / hr)	Q (cfs)
Street and Sidewalk	0.75	32,668.20	0.90	15	0.67	2.04	1.38
Buildings	-	-	0.90	15	-	2.04	0.00
Landscape	0.99	43,241.40	0.20	15	0.20	2.04	0.41
<b>Totals:</b>	<b>1.74</b>	<b>75,909.60</b>	<b>0.50</b>	<b>15</b>	<b>0.87</b>	<b>2.04</b>	<b>1.78</b>

Halcyon Lake - Storm Drainage Calculations (Rational Method)								
A-2								
Catchment Basin	Area (ac)	Area (sf)	C	Tc (min)	CA	I (in / hr)	Q (cfs)	
Street and Sidewalk	1.55	67,307.67	0.90	15	1.39	2.04	2.84	
Buildings	-	-	0.90	15	-	2.04	0.00	
Landscape	1.71	74,460.53	0.20	15	0.34	2.04	0.70	
<b>Totals:</b>	<b>3.25</b>	<b>141,768.20</b>	<b>0.53</b>	<b>15</b>	<b>1.73</b>	<b>2.04</b>	<b>3.53</b>	

Halcyon Lake - Storm Drainage Calculations (Rational Method)								
A-3								
Catchment Basin	Area (ac)	Area (sf)	C	Tc (min)	CA	I (in / hr)	Q (cfs)	
Street and Sidewalk	0.44	19,368.23	0.90	15	0.40	2.04	0.82	
Buildings	-	-	0.90	15	-	2.04	0.00	
Landscape	0.53	23,282.42	0.20	15	0.11	2.04	0.22	
<b>Totals:</b>	<b>0.98</b>	<b>42,650.65</b>	<b>0.52</b>	<b>15</b>	<b>0.51</b>	<b>2.04</b>	<b>1.03</b>	

### 100 yr Volume Calculations

Halcyon Lake - Storm Drainage Calculations (Rational Method)									
Street and Full Lot B-1									
Catchment Basin	Area (ac)	Area (sf)	C	Tc (min)	CA	I (in / hr)	Q (cfs)		
Street and Sidewalk	3.57	155,344.10	0.90	15	3.21	4.1	13.16		
Buildings	-	-	0.90	15	-	4.1	0.00		
Landscape	6.04	263,258.80	0.20	15	1.21	4.1	4.96		
<b>Totals:</b>	<b>9.61</b>	<b>418,602.90</b>			<b>0.46</b>		<b>18.12</b>		
90 Percentile Rain Depth	0.64	in							
90 Percentile Volume	22,360.37	cf	Retention						
Proposed Infiltration Rate	9.11340000E-06	ft/sec							
Proposed Basin Area	10,000.00	sf							
Proposed Release Rate	0.10000	cfs /ac							
Total Acres	9.61	acres					VOLUME PROF	24,565.50	cf
Weighted C Value	0.46								
Storm Event (Year)	100	100							
Release	0.96	cfs							
Time (min)	I (in/hr)	Total I (in)	C	Area (ac)	Volume (cf)	Release (cf)	Storage (cf)	Q (cfs)	Hr
60	1.71	1.71	0.46	9.61	27,425.76	3,787.61	23638.15	7.56	1.00
180	0.63	1.90	0.46	9.61	30,473.06	11,362.83	19,110.23	2.80	3.00
360	0.35	2.12	0.46	9.61	34,001.52	22,725.66	11,275.86	1.56	6.00
720	0.22	2.60	0.46	9.61	41,699.98	45,451.33	(3,751.35)	0.95	12.00
1440	0.12	2.88	0.50	9.61	50,357.89	83,028.67	(32,670.78)	0.58	24.00

**SD Pipe Capacity for 10 yr Flow Calculations**

<i>DS MH</i>	<i>US MH</i>	<i>DS Invert</i>	<i>US Invert</i>	<i>Length (ft)</i>	<i>D (in)</i>	<i>d (in)</i>	<i>n (coeff)</i>	<i>S (in/in)</i>	<i>Area, ft<sup>2</sup></i>	<i>Vel ocit y ft/s</i>	<i>flow capaci ty, cfs</i>	<i>10 yr Desig n Flow</i>
SD-10	SD-9	30.50	30.87	37.00	15.00	14.00	0.013	0.0100	1.19	5.83	<b>6.95</b>	0.89
SD-11	SD-10	30.10	30.50	41.50	15.00	14.00	0.013	0.0096	1.19	5.72	<b>6.82</b>	1.78
SD-12	SD-11	29.50	30.10	193.00	15.00	14.00	0.013	0.0031	1.19	3.25	<b>3.87</b>	1.78
SD-8	SD-12	29.00	29.50	170.00	15.00	14.00	0.013	0.0029	1.19	3.16	<b>3.77</b>	1.78
SD-7	SD-8	28.90	29.00	17.00	15.00	14.00	0.013	0.0059	1.19	4.47	<b>5.33</b>	1.78
SD-5	SD-15	26.30	26.90	57.00	15.00	14.00	0.013	0.0105	1.19	5.98	<b>7.13</b>	3.53
SD-5	SD-3	26.30	26.90	36.00	15.00	14.00	0.013	0.0167	1.19	7.52	<b>8.97</b>	2.82

## Appendix – NOAA Rainfall DATA

STATION	NAME	DATE	PRC P	US1UTWB0001	WEST HAVEN 2.0 SW, UT US	10/23/2012	0.73
US1UTWB0001	WEST HAVEN 2.0 SW, UT US	5/17/2015	1.96	US1UTWB0001	WEST HAVEN 2.0 SW, UT US	5/19/2012	0.72
US1UTWB0001	WEST HAVEN 2.0 SW, UT US	8/1/2011	1.57	US1UTWB0001	WEST HAVEN 2.0 SW, UT US	11/9/2010	0.71
US1UTWB0001	WEST HAVEN 2.0 SW, UT US	4/8/2011	1.23	US1UTWB0001	WEST HAVEN 2.0 SW, UT US	5/9/2011	0.71
US1UTWB0001	WEST HAVEN 2.0 SW, UT US	10/25/2010	1.22	US1UTWB0001	WEST HAVEN 2.0 SW, UT US	5/21/2019	0.71
US1UTWB0001	WEST HAVEN 2.0 SW, UT US	2/9/2009	1.21	US1UTWB0001	WEST HAVEN 2.0 SW, UT US	10/5/2018	0.7
US1UTWB0001	WEST HAVEN 2.0 SW, UT US	9/23/2016	1.2	US1UTWB0001	WEST HAVEN 2.0 SW, UT US	11/28/2019	0.7
US1UTWB0001	WEST HAVEN 2.0 SW, UT US	12/11/2016	1.19	US1UTWB0001	WEST HAVEN 2.0 SW, UT US	7/9/2015	0.69
US1UTWB0001	WEST HAVEN 2.0 SW, UT US	10/5/2008	1.18	US1UTWB0001	WEST HAVEN 2.0 SW, UT US	1/18/2019	0.69
US1UTWB0001	WEST HAVEN 2.0 SW, UT US	1/22/2012	1.12	US1UTWB0001	WEST HAVEN 2.0 SW, UT US	1/13/2015	0.68
US1UTWB0001	WEST HAVEN 2.0 SW, UT US	12/19/2013	1.08	US1UTWB0001	WEST HAVEN 2.0 SW, UT US	9/1/2008	0.67
US1UTWB0001	WEST HAVEN 2.0 SW, UT US	3/29/2019	1.08	US1UTWB0001	WEST HAVEN 2.0 SW, UT US	12/13/2009	0.67
US1UTWB0001	WEST HAVEN 2.0 SW, UT US	5/30/2011	1.05	US1UTWB0001	WEST HAVEN 2.0 SW, UT US	1/7/2016	0.67
US1UTWB0001	WEST HAVEN 2.0 SW, UT US	5/29/2011	1.04	US1UTWB0001	WEST HAVEN 2.0 SW, UT US	12/13/2019	0.67
US1UTWB0001	WEST HAVEN 2.0 SW, UT US	9/24/2016	1.04	US1UTWB0001	WEST HAVEN 2.0 SW, UT US	4/27/2014	0.66
US1UTWB0001	WEST HAVEN 2.0 SW, UT US	5/19/2010	1.02	US1UTWB0001	WEST HAVEN 2.0 SW, UT US	4/26/2015	0.66
US1UTWB0001	WEST HAVEN 2.0 SW, UT US	10/10/2018	1	US1UTWB0001	WEST HAVEN 2.0 SW, UT US	1/23/2017	0.66
US1UTWB0001	WEST HAVEN 2.0 SW, UT US	5/18/2013	0.93	US1UTWB0001	WEST HAVEN 2.0 SW, UT US	1/25/2009	0.65
US1UTWB0001	WEST HAVEN 2.0 SW, UT US	7/30/2014	0.92	US1UTWB0001	WEST HAVEN 2.0 SW, UT US	3/29/2016	0.65
US1UTWB0001	WEST HAVEN 2.0 SW, UT US	2/20/2011	0.9	US1UTWB0001	WEST HAVEN 2.0 SW, UT US	12/30/2010	0.64
US1UTWB0001	WEST HAVEN 2.0 SW, UT US	4/10/2011	0.89	US1UTWB0001	WEST HAVEN 2.0 SW, UT US	10/20/2009	0.63
US1UTWB0001	WEST HAVEN 2.0 SW, UT US	5/24/2011	0.89	US1UTWB0001	WEST HAVEN 2.0 SW, UT US	2/17/2009	0.62
US1UTWB0001	WEST HAVEN 2.0 SW, UT US	9/15/2017	0.89	US1UTWB0001	WEST HAVEN 2.0 SW, UT US	4/22/2010	0.62
US1UTWB0001	WEST HAVEN 2.0 SW, UT US	11/17/2017	0.89	US1UTWB0001	WEST HAVEN 2.0 SW, UT US	5/20/2016	0.62
US1UTWB0001	WEST HAVEN 2.0 SW, UT US	4/15/2009	0.88	US1UTWB0001	WEST HAVEN 2.0 SW, UT US	9/21/2019	0.62
US1UTWB0001	WEST HAVEN 2.0 SW, UT US	9/17/2015	0.82	US1UTWB0001	WEST HAVEN 2.0 SW, UT US	4/16/2009	0.61
US1UTWB0001	WEST HAVEN 2.0 SW, UT US	5/22/2019	0.82	US1UTWB0001	WEST HAVEN 2.0 SW, UT US	3/8/2011	0.61
US1UTWB0001	WEST HAVEN 2.0 SW, UT US	2/14/2019	0.77	US1UTWB0001	WEST HAVEN 2.0 SW, UT US	9/17/2011	0.61
US1UTWB0001	WEST HAVEN 2.0 SW, UT US	5/19/2011	0.76	US1UTWB0001	WEST HAVEN 2.0 SW, UT US	10/6/2011	0.61
US1UTWB0001	WEST HAVEN 2.0 SW, UT US	9/28/2014	0.76	US1UTWB0001	WEST HAVEN 2.0 SW, UT US	5/29/2013	0.61
US1UTWB0001	WEST HAVEN 2.0 SW, UT US	4/6/2010	0.73	US1UTWB0001	WEST HAVEN 2.0 SW, UT US	12/25/2016	0.61

US1UTWB0001	WEST HAVEN 2.0 SW, UT US	6/11/2009	0.6	US1UTWB0001	WEST HAVEN 2.0 SW, UT US	10/17/2016	0.5
US1UTWB0001	WEST HAVEN 2.0 SW, UT US	1/19/2012	0.6	US1UTWB0001	WEST HAVEN 2.0 SW, UT US	10/24/2012	0.49
US1UTWB0001	WEST HAVEN 2.0 SW, UT US	3/7/2016	0.6	US1UTWB0001	WEST HAVEN 2.0 SW, UT US	6/18/2014	0.49
US1UTWB0001	WEST HAVEN 2.0 SW, UT US	3/7/2019	0.6	US1UTWB0001	WEST HAVEN 2.0 SW, UT US	12/22/2015	0.49
US1UTWB0001	WEST HAVEN 2.0 SW, UT US	5/27/2019	0.6	US1UTWB0001	WEST HAVEN 2.0 SW, UT US	3/23/2017	0.49
US1UTWB0001	WEST HAVEN 2.0 SW, UT US	4/17/2019	0.59	US1UTWB0001	WEST HAVEN 2.0 SW, UT US	4/16/2019	0.49
US1UTWB0001	WEST HAVEN 2.0 SW, UT US	5/17/2019	0.58	US1UTWB0001	WEST HAVEN 2.0 SW, UT US	2/28/2014	0.48
US1UTWB0001	WEST HAVEN 2.0 SW, UT US	6/12/2010	0.57	US1UTWB0001	WEST HAVEN 2.0 SW, UT US	5/7/2015	0.48
US1UTWB0001	WEST HAVEN 2.0 SW, UT US	11/10/2012	0.57	US1UTWB0001	WEST HAVEN 2.0 SW, UT US	4/9/2017	0.48
US1UTWB0001	WEST HAVEN 2.0 SW, UT US	11/26/2015	0.57	US1UTWB0001	WEST HAVEN 2.0 SW, UT US	5/8/2019	0.48
US1UTWB0001	WEST HAVEN 2.0 SW, UT US	4/19/2017	0.57	US1UTWB0001	WEST HAVEN 2.0 SW, UT US	3/25/2020	0.48
US1UTWB0001	WEST HAVEN 2.0 SW, UT US	9/29/2019	0.57	US1UTWB0001	WEST HAVEN 2.0 SW, UT US	1/11/2013	0.47
US1UTWB0001	WEST HAVEN 2.0 SW, UT US	12/29/2010	0.56	US1UTWB0001	WEST HAVEN 2.0 SW, UT US	3/3/2015	0.47
US1UTWB0001	WEST HAVEN 2.0 SW, UT US	4/25/2015	0.56	US1UTWB0001	WEST HAVEN 2.0 SW, UT US	5/21/2016	0.47
US1UTWB0001	WEST HAVEN 2.0 SW, UT US	5/28/2015	0.55	US1UTWB0001	WEST HAVEN 2.0 SW, UT US	1/23/2009	0.46
US1UTWB0001	WEST HAVEN 2.0 SW, UT US	12/23/2015	0.55	US1UTWB0001	WEST HAVEN 2.0 SW, UT US	8/15/2011	0.46
US1UTWB0001	WEST HAVEN 2.0 SW, UT US	3/23/2018	0.55	US1UTWB0001	WEST HAVEN 2.0 SW, UT US	2/24/2013	0.46
US1UTWB0001	WEST HAVEN 2.0 SW, UT US	11/24/2018	0.55	US1UTWB0001	WEST HAVEN 2.0 SW, UT US	1/24/2016	0.46
US1UTWB0001	WEST HAVEN 2.0 SW, UT US	11/10/2008	0.54	US1UTWB0001	WEST HAVEN 2.0 SW, UT US	4/9/2009	0.45
US1UTWB0001	WEST HAVEN 2.0 SW, UT US	5/24/2010	0.54	US1UTWB0001	WEST HAVEN 2.0 SW, UT US	1/28/2013	0.45
US1UTWB0001	WEST HAVEN 2.0 SW, UT US	5/27/2015	0.54	US1UTWB0001	WEST HAVEN 2.0 SW, UT US	2/9/2014	0.45
US1UTWB0001	WEST HAVEN 2.0 SW, UT US	12/27/2012	0.53	US1UTWB0001	WEST HAVEN 2.0 SW, UT US	9/2/2013	0.44
US1UTWB0001	WEST HAVEN 2.0 SW, UT US	5/22/2010	0.52	US1UTWB0001	WEST HAVEN 2.0 SW, UT US	12/21/2014	0.44
US1UTWB0001	WEST HAVEN 2.0 SW, UT US	1/30/2014	0.52	US1UTWB0001	WEST HAVEN 2.0 SW, UT US	12/16/2016	0.44
US1UTWB0001	WEST HAVEN 2.0 SW, UT US	3/24/2017	0.52	US1UTWB0001	WEST HAVEN 2.0 SW, UT US	11/29/2018	0.44
US1UTWB0001	WEST HAVEN 2.0 SW, UT US	6/7/2019	0.52	US1UTWB0001	WEST HAVEN 2.0 SW, UT US	3/22/2019	0.44
US1UTWB0001	WEST HAVEN 2.0 SW, UT US	9/11/2019	0.52	US1UTWB0001	WEST HAVEN 2.0 SW, UT US	11/3/2008	0.43
US1UTWB0001	WEST HAVEN 2.0 SW, UT US	1/27/2020	0.52	US1UTWB0001	WEST HAVEN 2.0 SW, UT US	6/12/2016	0.43
US1UTWB0001	WEST HAVEN 2.0 SW, UT US	4/13/2010	0.51	US1UTWB0001	WEST HAVEN 2.0 SW, UT US	4/8/2017	0.43
US1UTWB0001	WEST HAVEN 2.0 SW, UT US	6/17/2014	0.51	US1UTWB0001	WEST HAVEN 2.0 SW, UT US	4/13/2018	0.43
US1UTWB0001	WEST HAVEN 2.0 SW, UT US	3/15/2018	0.51	US1UTWB0001	WEST HAVEN 2.0 SW, UT US	2/10/2009	0.42
US1UTWB0001	WEST HAVEN 2.0 SW, UT US	3/24/2019	0.51	US1UTWB0001	WEST HAVEN 2.0 SW, UT US	5/24/2009	0.42
US1UTWB0001	WEST HAVEN 2.0 SW, UT US	12/14/2015	0.5	US1UTWB0001	WEST HAVEN 2.0 SW, UT US	3/5/2010	0.42



US1UTWB0001	WEST HAVEN 2.0 SW, UT US	12/23/2010	0.42	US1UTWB0001	WEST HAVEN 2.0 SW, UT US	10/5/2011	0.36
US1UTWB0001	WEST HAVEN 2.0 SW, UT US	4/24/2016	0.42	US1UTWB0001	WEST HAVEN 2.0 SW, UT US	4/23/2014	0.36
US1UTWB0001	WEST HAVEN 2.0 SW, UT US	12/5/2019	0.42	US1UTWB0001	WEST HAVEN 2.0 SW, UT US	1/19/2016	0.36
US1UTWB0001	WEST HAVEN 2.0 SW, UT US	3/27/2011	0.41	US1UTWB0001	WEST HAVEN 2.0 SW, UT US	5/7/2016	0.36
US1UTWB0001	WEST HAVEN 2.0 SW, UT US	8/26/2014	0.41	US1UTWB0001	WEST HAVEN 2.0 SW, UT US	2/11/2017	0.36
US1UTWB0001	WEST HAVEN 2.0 SW, UT US	1/6/2019	0.41	US1UTWB0001	WEST HAVEN 2.0 SW, UT US	2/19/2017	0.36
US1UTWB0001	WEST HAVEN 2.0 SW, UT US	12/26/2008	0.4	US1UTWB0001	WEST HAVEN 2.0 SW, UT US	2/22/2017	0.36
US1UTWB0001	WEST HAVEN 2.0 SW, UT US	6/8/2009	0.4	US1UTWB0001	WEST HAVEN 2.0 SW, UT US	2/24/2017	0.36
US1UTWB0001	WEST HAVEN 2.0 SW, UT US	5/11/2010	0.4	US1UTWB0001	WEST HAVEN 2.0 SW, UT US	5/17/2017	0.36
US1UTWB0001	WEST HAVEN 2.0 SW, UT US	3/4/2011	0.4	US1UTWB0001	WEST HAVEN 2.0 SW, UT US	9/16/2017	0.36
US1UTWB0001	WEST HAVEN 2.0 SW, UT US	9/27/2014	0.4	US1UTWB0001	WEST HAVEN 2.0 SW, UT US	9/22/2017	0.36
US1UTWB0001	WEST HAVEN 2.0 SW, UT US	8/23/2014	0.39	US1UTWB0001	WEST HAVEN 2.0 SW, UT US	1/7/2019	0.36
US1UTWB0001	WEST HAVEN 2.0 SW, UT US	5/12/2018	0.39	US1UTWB0001	WEST HAVEN 2.0 SW, UT US	3/9/2019	0.36
US1UTWB0001	WEST HAVEN 2.0 SW, UT US	4/10/2019	0.39	US1UTWB0001	WEST HAVEN 2.0 SW, UT US	5/10/2015	0.35
US1UTWB0001	WEST HAVEN 2.0 SW, UT US	4/13/2019	0.39	US1UTWB0001	WEST HAVEN 2.0 SW, UT US	6/18/2019	0.35
US1UTWB0001	WEST HAVEN 2.0 SW, UT US	1/24/2009	0.38	US1UTWB0001	WEST HAVEN 2.0 SW, UT US	5/2/2009	0.34
US1UTWB0001	WEST HAVEN 2.0 SW, UT US	10/14/2009	0.38	US1UTWB0001	WEST HAVEN 2.0 SW, UT US	11/5/2011	0.34
US1UTWB0001	WEST HAVEN 2.0 SW, UT US	4/23/2010	0.38	US1UTWB0001	WEST HAVEN 2.0 SW, UT US	4/27/2012	0.34
US1UTWB0001	WEST HAVEN 2.0 SW, UT US	10/8/2010	0.38	US1UTWB0001	WEST HAVEN 2.0 SW, UT US	1/21/2017	0.34
US1UTWB0001	WEST HAVEN 2.0 SW, UT US	4/19/2011	0.38	US1UTWB0001	WEST HAVEN 2.0 SW, UT US	1/21/2019	0.34
US1UTWB0001	WEST HAVEN 2.0 SW, UT US	3/19/2012	0.38	US1UTWB0001	WEST HAVEN 2.0 SW, UT US	2/18/2009	0.33
US1UTWB0001	WEST HAVEN 2.0 SW, UT US	4/12/2012	0.38	US1UTWB0001	WEST HAVEN 2.0 SW, UT US	5/12/2010	0.33
US1UTWB0001	WEST HAVEN 2.0 SW, UT US	5/19/2015	0.38	US1UTWB0001	WEST HAVEN 2.0 SW, UT US	11/13/2011	0.33
US1UTWB0001	WEST HAVEN 2.0 SW, UT US	11/21/2016	0.38	US1UTWB0001	WEST HAVEN 2.0 SW, UT US	1/21/2012	0.33
US1UTWB0001	WEST HAVEN 2.0 SW, UT US	11/30/2018	0.38	US1UTWB0001	WEST HAVEN 2.0 SW, UT US	10/25/2012	0.33
US1UTWB0001	WEST HAVEN 2.0 SW, UT US	3/26/2009	0.37	US1UTWB0001	WEST HAVEN 2.0 SW, UT US	1/3/2009	0.32
US1UTWB0001	WEST HAVEN 2.0 SW, UT US	10/5/2009	0.37	US1UTWB0001	WEST HAVEN 2.0 SW, UT US	4/26/2009	0.32
US1UTWB0001	WEST HAVEN 2.0 SW, UT US	3/25/2011	0.37	US1UTWB0001	WEST HAVEN 2.0 SW, UT US	4/1/2010	0.32
US1UTWB0001	WEST HAVEN 2.0 SW, UT US	4/26/2014	0.37	US1UTWB0001	WEST HAVEN 2.0 SW, UT US	11/21/2010	0.32
US1UTWB0001	WEST HAVEN 2.0 SW, UT US	4/15/2015	0.37	US1UTWB0001	WEST HAVEN 2.0 SW, UT US	12/7/2010	0.32
US1UTWB0001	WEST HAVEN 2.0 SW, UT US	1/26/2009	0.36	US1UTWB0001	WEST HAVEN 2.0 SW, UT US	12/3/2012	0.32
US1UTWB0001	WEST HAVEN 2.0 SW, UT US	1/19/2010	0.36	US1UTWB0001	WEST HAVEN 2.0 SW, UT US	12/15/2012	0.32
US1UTWB0001	WEST HAVEN 2.0 SW, UT US	12/20/2010	0.36	US1UTWB0001	WEST HAVEN 2.0 SW, UT US	10/3/2013	0.32

US1UTWB0001	WEST HAVEN 2.0 SW, UT US	8/9/2019	0.32	US1UTWB0001	WEST HAVEN 2.0 SW, UT US	5/27/2012	0.27
US1UTWB0001	WEST HAVEN 2.0 SW, UT US	2/26/2011	0.31	US1UTWB0001	WEST HAVEN 2.0 SW, UT US	6/28/2014	0.27
US1UTWB0001	WEST HAVEN 2.0 SW, UT US	9/9/2014	0.31	US1UTWB0001	WEST HAVEN 2.0 SW, UT US	12/29/2014	0.27
US1UTWB0001	WEST HAVEN 2.0 SW, UT US	5/21/2015	0.31	US1UTWB0001	WEST HAVEN 2.0 SW, UT US	12/15/2015	0.27
US1UTWB0001	WEST HAVEN 2.0 SW, UT US	9/15/2009	0.3	US1UTWB0001	WEST HAVEN 2.0 SW, UT US	5/8/2016	0.27
US1UTWB0001	WEST HAVEN 2.0 SW, UT US	1/7/2012	0.3	US1UTWB0001	WEST HAVEN 2.0 SW, UT US	1/2/2017	0.27
US1UTWB0001	WEST HAVEN 2.0 SW, UT US	7/6/2012	0.3	US1UTWB0001	WEST HAVEN 2.0 SW, UT US	2/19/2018	0.27
US1UTWB0001	WEST HAVEN 2.0 SW, UT US	5/19/2013	0.3	US1UTWB0001	WEST HAVEN 2.0 SW, UT US	12/23/2008	0.26
US1UTWB0001	WEST HAVEN 2.0 SW, UT US	12/8/2013	0.3	US1UTWB0001	WEST HAVEN 2.0 SW, UT US	6/7/2009	0.26
US1UTWB0001	WEST HAVEN 2.0 SW, UT US	11/23/2014	0.3	US1UTWB0001	WEST HAVEN 2.0 SW, UT US	8/31/2010	0.26
US1UTWB0001	WEST HAVEN 2.0 SW, UT US	8/8/2015	0.3	US1UTWB0001	WEST HAVEN 2.0 SW, UT US	12/15/2010	0.26
US1UTWB0001	WEST HAVEN 2.0 SW, UT US	9/15/2015	0.3	US1UTWB0001	WEST HAVEN 2.0 SW, UT US	2/17/2011	0.26
US1UTWB0001	WEST HAVEN 2.0 SW, UT US	3/26/2020	0.3	US1UTWB0001	WEST HAVEN 2.0 SW, UT US	1/24/2012	0.26
US1UTWB0001	WEST HAVEN 2.0 SW, UT US	10/1/2009	0.29	US1UTWB0001	WEST HAVEN 2.0 SW, UT US	4/16/2015	0.26
US1UTWB0001	WEST HAVEN 2.0 SW, UT US	2/6/2010	0.29	US1UTWB0001	WEST HAVEN 2.0 SW, UT US	1/20/2017	0.26
US1UTWB0001	WEST HAVEN 2.0 SW, UT US	4/26/2011	0.29	US1UTWB0001	WEST HAVEN 2.0 SW, UT US	3/16/2018	0.26
US1UTWB0001	WEST HAVEN 2.0 SW, UT US	5/18/2011	0.29	US1UTWB0001	WEST HAVEN 2.0 SW, UT US	4/21/2019	0.26
US1UTWB0001	WEST HAVEN 2.0 SW, UT US	3/31/2014	0.29	US1UTWB0001	WEST HAVEN 2.0 SW, UT US	6/10/2010	0.25
US1UTWB0001	WEST HAVEN 2.0 SW, UT US	8/13/2014	0.29	US1UTWB0001	WEST HAVEN 2.0 SW, UT US	10/24/2010	0.25
US1UTWB0001	WEST HAVEN 2.0 SW, UT US	12/13/2014	0.29	US1UTWB0001	WEST HAVEN 2.0 SW, UT US	1/17/2011	0.25
US1UTWB0001	WEST HAVEN 2.0 SW, UT US	1/9/2018	0.29	US1UTWB0001	WEST HAVEN 2.0 SW, UT US	3/17/2011	0.25
US1UTWB0001	WEST HAVEN 2.0 SW, UT US	3/4/2018	0.29	US1UTWB0001	WEST HAVEN 2.0 SW, UT US	7/6/2011	0.25
US1UTWB0001	WEST HAVEN 2.0 SW, UT US	4/3/2019	0.29	US1UTWB0001	WEST HAVEN 2.0 SW, UT US	3/5/2014	0.25
US1UTWB0001	WEST HAVEN 2.0 SW, UT US	11/11/2008	0.28	US1UTWB0001	WEST HAVEN 2.0 SW, UT US	9/22/2014	0.25
US1UTWB0001	WEST HAVEN 2.0 SW, UT US	5/20/2011	0.28	US1UTWB0001	WEST HAVEN 2.0 SW, UT US	3/28/2016	0.25
US1UTWB0001	WEST HAVEN 2.0 SW, UT US	11/1/2011	0.28	US1UTWB0001	WEST HAVEN 2.0 SW, UT US	12/17/2016	0.25
US1UTWB0001	WEST HAVEN 2.0 SW, UT US	11/9/2012	0.28	US1UTWB0001	WEST HAVEN 2.0 SW, UT US	3/6/2017	0.25
US1UTWB0001	WEST HAVEN 2.0 SW, UT US	11/19/2012	0.28	US1UTWB0001	WEST HAVEN 2.0 SW, UT US	10/3/2018	0.25
US1UTWB0001	WEST HAVEN 2.0 SW, UT US	3/1/2014	0.28	US1UTWB0001	WEST HAVEN 2.0 SW, UT US	1/16/2019	0.25
US1UTWB0001	WEST HAVEN 2.0 SW, UT US	1/31/2016	0.28	US1UTWB0001	WEST HAVEN 2.0 SW, UT US	2/3/2019	0.25
US1UTWB0001	WEST HAVEN 2.0 SW, UT US	1/9/2017	0.28	US1UTWB0001	WEST HAVEN 2.0 SW, UT US	12/14/2019	0.25
US1UTWB0001	WEST HAVEN 2.0 SW, UT US	7/2/2009	0.27	US1UTWB0001	WEST HAVEN 2.0 SW, UT US	3/3/2011	0.24
US1UTWB0001	WEST HAVEN 2.0 SW, UT US	2/25/2010	0.27	US1UTWB0001	WEST HAVEN 2.0 SW, UT US	4/3/2011	0.24

US1UTWB0001	WEST HAVEN 2.0 SW, UT US	5/10/2011	0.24	US1UTWB0001	WEST HAVEN 2.0 SW, UT US	6/13/2017	0.22
US1UTWB0001	WEST HAVEN 2.0 SW, UT US	1/25/2013	0.24	US1UTWB0001	WEST HAVEN 2.0 SW, UT US	4/8/2018	0.22
US1UTWB0001	WEST HAVEN 2.0 SW, UT US	8/9/2014	0.24	US1UTWB0001	WEST HAVEN 2.0 SW, UT US	2/16/2019	0.22
US1UTWB0001	WEST HAVEN 2.0 SW, UT US	5/30/2016	0.24	US1UTWB0001	WEST HAVEN 2.0 SW, UT US	8/30/2010	0.21
US1UTWB0001	WEST HAVEN 2.0 SW, UT US	11/28/2016	0.24	US1UTWB0001	WEST HAVEN 2.0 SW, UT US	4/18/2011	0.21
US1UTWB0001	WEST HAVEN 2.0 SW, UT US	1/22/2017	0.24	US1UTWB0001	WEST HAVEN 2.0 SW, UT US	8/29/2011	0.21
US1UTWB0001	WEST HAVEN 2.0 SW, UT US	12/25/2017	0.24	US1UTWB0001	WEST HAVEN 2.0 SW, UT US	10/13/2012	0.21
US1UTWB0001	WEST HAVEN 2.0 SW, UT US	1/7/2018	0.24	US1UTWB0001	WEST HAVEN 2.0 SW, UT US	5/8/2013	0.21
US1UTWB0001	WEST HAVEN 2.0 SW, UT US	7/3/2009	0.23	US1UTWB0001	WEST HAVEN 2.0 SW, UT US	3/22/2016	0.21
US1UTWB0001	WEST HAVEN 2.0 SW, UT US	9/30/2009	0.23	US1UTWB0001	WEST HAVEN 2.0 SW, UT US	12/26/2016	0.21
US1UTWB0001	WEST HAVEN 2.0 SW, UT US	6/13/2010	0.23	US1UTWB0001	WEST HAVEN 2.0 SW, UT US	1/8/2017	0.21
US1UTWB0001	WEST HAVEN 2.0 SW, UT US	6/17/2010	0.23	US1UTWB0001	WEST HAVEN 2.0 SW, UT US	8/23/2018	0.21
US1UTWB0001	WEST HAVEN 2.0 SW, UT US	10/7/2010	0.23	US1UTWB0001	WEST HAVEN 2.0 SW, UT US	1/29/2020	0.21
US1UTWB0001	WEST HAVEN 2.0 SW, UT US	3/7/2011	0.23	US1UTWB0001	WEST HAVEN 2.0 SW, UT US	3/18/2020	0.21
US1UTWB0001	WEST HAVEN 2.0 SW, UT US	5/11/2011	0.23	US1UTWB0001	WEST HAVEN 2.0 SW, UT US	10/12/2008	0.2
US1UTWB0001	WEST HAVEN 2.0 SW, UT US	10/7/2011	0.23	US1UTWB0001	WEST HAVEN 2.0 SW, UT US	11/5/2008	0.2
US1UTWB0001	WEST HAVEN 2.0 SW, UT US	11/17/2013	0.23	US1UTWB0001	WEST HAVEN 2.0 SW, UT US	2/15/2009	0.2
US1UTWB0001	WEST HAVEN 2.0 SW, UT US	4/9/2015	0.23	US1UTWB0001	WEST HAVEN 2.0 SW, UT US	3/30/2009	0.2
US1UTWB0001	WEST HAVEN 2.0 SW, UT US	5/15/2015	0.23	US1UTWB0001	WEST HAVEN 2.0 SW, UT US	8/20/2010	0.2
US1UTWB0001	WEST HAVEN 2.0 SW, UT US	9/15/2016	0.23	US1UTWB0001	WEST HAVEN 2.0 SW, UT US	11/19/2011	0.2
US1UTWB0001	WEST HAVEN 2.0 SW, UT US	1/12/2017	0.23	US1UTWB0001	WEST HAVEN 2.0 SW, UT US	9/25/2012	0.2
US1UTWB0001	WEST HAVEN 2.0 SW, UT US	1/24/2017	0.23	US1UTWB0001	WEST HAVEN 2.0 SW, UT US	3/21/2013	0.2
US1UTWB0001	WEST HAVEN 2.0 SW, UT US	3/26/2017	0.23	US1UTWB0001	WEST HAVEN 2.0 SW, UT US	4/5/2013	0.2
US1UTWB0001	WEST HAVEN 2.0 SW, UT US	3/26/2018	0.23	US1UTWB0001	WEST HAVEN 2.0 SW, UT US	9/30/2014	0.2
US1UTWB0001	WEST HAVEN 2.0 SW, UT US	5/1/2018	0.23	US1UTWB0001	WEST HAVEN 2.0 SW, UT US	1/30/2016	0.2
US1UTWB0001	WEST HAVEN 2.0 SW, UT US	2/15/2019	0.23	US1UTWB0001	WEST HAVEN 2.0 SW, UT US	12/15/2016	0.2
US1UTWB0001	WEST HAVEN 2.0 SW, UT US	1/6/2009	0.22	US1UTWB0001	WEST HAVEN 2.0 SW, UT US	1/11/2017	0.2
US1UTWB0001	WEST HAVEN 2.0 SW, UT US	12/1/2012	0.22	US1UTWB0001	WEST HAVEN 2.0 SW, UT US	11/18/2017	0.2
US1UTWB0001	WEST HAVEN 2.0 SW, UT US	4/20/2013	0.22	US1UTWB0001	WEST HAVEN 2.0 SW, UT US	12/24/2018	0.2
US1UTWB0001	WEST HAVEN 2.0 SW, UT US	10/29/2013	0.22	US1UTWB0001	WEST HAVEN 2.0 SW, UT US	4/12/2019	0.2
US1UTWB0001	WEST HAVEN 2.0 SW, UT US	2/13/2014	0.22	US1UTWB0001	WEST HAVEN 2.0 SW, UT US	5/18/2019	0.2
US1UTWB0001	WEST HAVEN 2.0 SW, UT US	5/16/2015	0.22	US1UTWB0001	WEST HAVEN 2.0 SW, UT US	6/19/2011	0.19
US1UTWB0001	WEST HAVEN 2.0 SW, UT US	7/8/2015	0.22	US1UTWB0001	WEST HAVEN 2.0 SW, UT US	6/20/2011	0.19

US1UTWB0001	WEST HAVEN 2.0 SW, UT US	12/6/2012	0.19	US1UTWB0001	WEST HAVEN 2.0 SW, UT US	1/28/2015	0.17
US1UTWB0001	WEST HAVEN 2.0 SW, UT US	10/19/2015	0.19	US1UTWB0001	WEST HAVEN 2.0 SW, UT US	5/23/2015	0.17
US1UTWB0001	WEST HAVEN 2.0 SW, UT US	9/14/2016	0.19	US1UTWB0001	WEST HAVEN 2.0 SW, UT US	2/18/2016	0.17
US1UTWB0001	WEST HAVEN 2.0 SW, UT US	1/5/2017	0.19	US1UTWB0001	WEST HAVEN 2.0 SW, UT US	3/23/2016	0.17
US1UTWB0001	WEST HAVEN 2.0 SW, UT US	3/31/2017	0.19	US1UTWB0001	WEST HAVEN 2.0 SW, UT US	10/29/2016	0.17
US1UTWB0001	WEST HAVEN 2.0 SW, UT US	12/23/2017	0.19	US1UTWB0001	WEST HAVEN 2.0 SW, UT US	11/29/2016	0.17
US1UTWB0001	WEST HAVEN 2.0 SW, UT US	1/20/2018	0.19	US1UTWB0001	WEST HAVEN 2.0 SW, UT US	12/22/2018	0.17
US1UTWB0001	WEST HAVEN 2.0 SW, UT US	5/13/2018	0.19	US1UTWB0001	WEST HAVEN 2.0 SW, UT US	5/31/2019	0.17
US1UTWB0001	WEST HAVEN 2.0 SW, UT US	10/4/2018	0.19	US1UTWB0001	WEST HAVEN 2.0 SW, UT US	9/10/2008	0.16
US1UTWB0001	WEST HAVEN 2.0 SW, UT US	5/29/2019	0.19	US1UTWB0001	WEST HAVEN 2.0 SW, UT US	9/21/2008	0.16
US1UTWB0001	WEST HAVEN 2.0 SW, UT US	1/25/2020	0.19	US1UTWB0001	WEST HAVEN 2.0 SW, UT US	3/10/2009	0.16
US1UTWB0001	WEST HAVEN 2.0 SW, UT US	11/15/2009	0.18	US1UTWB0001	WEST HAVEN 2.0 SW, UT US	6/12/2009	0.16
US1UTWB0001	WEST HAVEN 2.0 SW, UT US	1/31/2010	0.18	US1UTWB0001	WEST HAVEN 2.0 SW, UT US	11/23/2009	0.16
US1UTWB0001	WEST HAVEN 2.0 SW, UT US	1/26/2011	0.18	US1UTWB0001	WEST HAVEN 2.0 SW, UT US	10/5/2010	0.16
US1UTWB0001	WEST HAVEN 2.0 SW, UT US	11/12/2011	0.18	US1UTWB0001	WEST HAVEN 2.0 SW, UT US	10/8/2011	0.16
US1UTWB0001	WEST HAVEN 2.0 SW, UT US	2/10/2014	0.18	US1UTWB0001	WEST HAVEN 2.0 SW, UT US	4/6/2012	0.16
US1UTWB0001	WEST HAVEN 2.0 SW, UT US	10/20/2015	0.18	US1UTWB0001	WEST HAVEN 2.0 SW, UT US	4/13/2012	0.16
US1UTWB0001	WEST HAVEN 2.0 SW, UT US	1/15/2016	0.18	US1UTWB0001	WEST HAVEN 2.0 SW, UT US	1/29/2013	0.16
US1UTWB0001	WEST HAVEN 2.0 SW, UT US	2/19/2016	0.18	US1UTWB0001	WEST HAVEN 2.0 SW, UT US	1/30/2013	0.16
US1UTWB0001	WEST HAVEN 2.0 SW, UT US	3/30/2016	0.18	US1UTWB0001	WEST HAVEN 2.0 SW, UT US	2/10/2013	0.16
US1UTWB0001	WEST HAVEN 2.0 SW, UT US	2/7/2017	0.18	US1UTWB0001	WEST HAVEN 2.0 SW, UT US	4/2/2013	0.16
US1UTWB0001	WEST HAVEN 2.0 SW, UT US	6/14/2017	0.18	US1UTWB0001	WEST HAVEN 2.0 SW, UT US	10/4/2013	0.16
US1UTWB0001	WEST HAVEN 2.0 SW, UT US	9/19/2017	0.18	US1UTWB0001	WEST HAVEN 2.0 SW, UT US	10/10/2013	0.16
US1UTWB0001	WEST HAVEN 2.0 SW, UT US	3/25/2019	0.18	US1UTWB0001	WEST HAVEN 2.0 SW, UT US	5/9/2014	0.16
US1UTWB0001	WEST HAVEN 2.0 SW, UT US	11/26/2019	0.18	US1UTWB0001	WEST HAVEN 2.0 SW, UT US	5/22/2015	0.16
US1UTWB0001	WEST HAVEN 2.0 SW, UT US	12/30/2009	0.17	US1UTWB0001	WEST HAVEN 2.0 SW, UT US	11/24/2016	0.16
US1UTWB0001	WEST HAVEN 2.0 SW, UT US	12/18/2010	0.17	US1UTWB0001	WEST HAVEN 2.0 SW, UT US	1/10/2017	0.16
US1UTWB0001	WEST HAVEN 2.0 SW, UT US	3/18/2012	0.17	US1UTWB0001	WEST HAVEN 2.0 SW, UT US	4/21/2017	0.16
US1UTWB0001	WEST HAVEN 2.0 SW, UT US	7/17/2012	0.17	US1UTWB0001	WEST HAVEN 2.0 SW, UT US	2/6/2019	0.16
US1UTWB0001	WEST HAVEN 2.0 SW, UT US	9/9/2013	0.17	US1UTWB0001	WEST HAVEN 2.0 SW, UT US	12/8/2019	0.16
US1UTWB0001	WEST HAVEN 2.0 SW, UT US	10/11/2013	0.17	US1UTWB0001	WEST HAVEN 2.0 SW, UT US	1/1/2020	0.16
US1UTWB0001	WEST HAVEN 2.0 SW, UT US	4/6/2014	0.17	US1UTWB0001	WEST HAVEN 2.0 SW, UT US	6/2/2009	0.15
US1UTWB0001	WEST HAVEN 2.0 SW, UT US	6/27/2014	0.17	US1UTWB0001	WEST HAVEN 2.0 SW, UT US	6/9/2009	0.15

US1UTWB0001	WEST HAVEN 2.0 SW, UT US	6/14/2009	0.15	US1UTWB0001	WEST HAVEN 2.0 SW, UT US	10/6/2010	0.13
US1UTWB0001	WEST HAVEN 2.0 SW, UT US	6/18/2009	0.15	US1UTWB0001	WEST HAVEN 2.0 SW, UT US	12/19/2010	0.13
US1UTWB0001	WEST HAVEN 2.0 SW, UT US	12/31/2009	0.15	US1UTWB0001	WEST HAVEN 2.0 SW, UT US	6/14/2011	0.13
US1UTWB0001	WEST HAVEN 2.0 SW, UT US	1/14/2011	0.15	US1UTWB0001	WEST HAVEN 2.0 SW, UT US	3/2/2012	0.13
US1UTWB0001	WEST HAVEN 2.0 SW, UT US	4/14/2011	0.15	US1UTWB0001	WEST HAVEN 2.0 SW, UT US	10/26/2012	0.13
US1UTWB0001	WEST HAVEN 2.0 SW, UT US	7/14/2013	0.15	US1UTWB0001	WEST HAVEN 2.0 SW, UT US	12/18/2012	0.13
US1UTWB0001	WEST HAVEN 2.0 SW, UT US	1/10/2014	0.15	US1UTWB0001	WEST HAVEN 2.0 SW, UT US	1/12/2013	0.13
US1UTWB0001	WEST HAVEN 2.0 SW, UT US	5/25/2015	0.15	US1UTWB0001	WEST HAVEN 2.0 SW, UT US	12/21/2013	0.13
US1UTWB0001	WEST HAVEN 2.0 SW, UT US	10/23/2015	0.15	US1UTWB0001	WEST HAVEN 2.0 SW, UT US	3/27/2014	0.13
US1UTWB0001	WEST HAVEN 2.0 SW, UT US	11/2/2015	0.15	US1UTWB0001	WEST HAVEN 2.0 SW, UT US	8/6/2014	0.13
US1UTWB0001	WEST HAVEN 2.0 SW, UT US	9/22/2016	0.15	US1UTWB0001	WEST HAVEN 2.0 SW, UT US	8/21/2014	0.13
US1UTWB0001	WEST HAVEN 2.0 SW, UT US	10/31/2016	0.15	US1UTWB0001	WEST HAVEN 2.0 SW, UT US	12/22/2014	0.13
US1UTWB0001	WEST HAVEN 2.0 SW, UT US	2/27/2017	0.15	US1UTWB0001	WEST HAVEN 2.0 SW, UT US	5/9/2015	0.13
US1UTWB0001	WEST HAVEN 2.0 SW, UT US	3/23/2019	0.15	US1UTWB0001	WEST HAVEN 2.0 SW, UT US	8/12/2015	0.13
US1UTWB0001	WEST HAVEN 2.0 SW, UT US	4/15/2019	0.15	US1UTWB0001	WEST HAVEN 2.0 SW, UT US	12/11/2015	0.13
US1UTWB0001	WEST HAVEN 2.0 SW, UT US	10/18/2019	0.15	US1UTWB0001	WEST HAVEN 2.0 SW, UT US	12/21/2015	0.13
US1UTWB0001	WEST HAVEN 2.0 SW, UT US	2/6/2020	0.15	US1UTWB0001	WEST HAVEN 2.0 SW, UT US	2/14/2016	0.13
US1UTWB0001	WEST HAVEN 2.0 SW, UT US	2/14/2009	0.14	US1UTWB0001	WEST HAVEN 2.0 SW, UT US	5/27/2016	0.13
US1UTWB0001	WEST HAVEN 2.0 SW, UT US	9/16/2009	0.14	US1UTWB0001	WEST HAVEN 2.0 SW, UT US	8/8/2016	0.13
US1UTWB0001	WEST HAVEN 2.0 SW, UT US	12/8/2009	0.14	US1UTWB0001	WEST HAVEN 2.0 SW, UT US	9/2/2016	0.13
US1UTWB0001	WEST HAVEN 2.0 SW, UT US	3/26/2011	0.14	US1UTWB0001	WEST HAVEN 2.0 SW, UT US	4/6/2019	0.13
US1UTWB0001	WEST HAVEN 2.0 SW, UT US	12/25/2012	0.14	US1UTWB0001	WEST HAVEN 2.0 SW, UT US	5/23/2019	0.13
US1UTWB0001	WEST HAVEN 2.0 SW, UT US	12/6/2013	0.14	US1UTWB0001	WEST HAVEN 2.0 SW, UT US	5/25/2019	0.13
US1UTWB0001	WEST HAVEN 2.0 SW, UT US	11/20/2015	0.14	US1UTWB0001	WEST HAVEN 2.0 SW, UT US	7/27/2019	0.13
US1UTWB0001	WEST HAVEN 2.0 SW, UT US	3/14/2016	0.14	US1UTWB0001	WEST HAVEN 2.0 SW, UT US	11/30/2019	0.13
US1UTWB0001	WEST HAVEN 2.0 SW, UT US	2/8/2017	0.14	US1UTWB0001	WEST HAVEN 2.0 SW, UT US	5/25/2009	0.12
US1UTWB0001	WEST HAVEN 2.0 SW, UT US	2/9/2017	0.14	US1UTWB0001	WEST HAVEN 2.0 SW, UT US	12/14/2009	0.12
US1UTWB0001	WEST HAVEN 2.0 SW, UT US	5/9/2019	0.14	US1UTWB0001	WEST HAVEN 2.0 SW, UT US	11/24/2010	0.12
US1UTWB0001	WEST HAVEN 2.0 SW, UT US	9/30/2019	0.14	US1UTWB0001	WEST HAVEN 2.0 SW, UT US	8/11/2012	0.12
US1UTWB0001	WEST HAVEN 2.0 SW, UT US	2/17/2020	0.14	US1UTWB0001	WEST HAVEN 2.0 SW, UT US	7/5/2013	0.12
US1UTWB0001	WEST HAVEN 2.0 SW, UT US	1/7/2009	0.13	US1UTWB0001	WEST HAVEN 2.0 SW, UT US	12/20/2013	0.12
US1UTWB0001	WEST HAVEN 2.0 SW, UT US	8/24/2009	0.13	US1UTWB0001	WEST HAVEN 2.0 SW, UT US	1/9/2014	0.12
US1UTWB0001	WEST HAVEN 2.0 SW, UT US	12/12/2009	0.13	US1UTWB0001	WEST HAVEN 2.0 SW, UT US	11/15/2014	0.12

US1UTWB0001	WEST HAVEN 2.0 SW, UT US	2/10/2015	0.12
US1UTWB0001	WEST HAVEN 2.0 SW, UT US	7/20/2015	0.12
US1UTWB0001	WEST HAVEN 2.0 SW, UT US	10/3/2015	0.12
US1UTWB0001	WEST HAVEN 2.0 SW, UT US	10/18/2015	0.12
US1UTWB0001	WEST HAVEN 2.0 SW, UT US	12/24/2015	0.12
US1UTWB0001	WEST HAVEN 2.0 SW, UT US	10/2/2016	0.12
US1UTWB0001	WEST HAVEN 2.0 SW, UT US	4/3/2017	0.12
US1UTWB0001	WEST HAVEN 2.0 SW, UT US	4/25/2017	0.12
US1UTWB0001	WEST HAVEN 2.0 SW, UT US	10/23/2018	0.12
US1UTWB0001	WEST HAVEN 2.0 SW, UT US	1/17/2019	0.12
US1UTWB0001	WEST HAVEN 2.0 SW, UT US	2/3/2020	0.12
US1UTWB0001	WEST HAVEN 2.0 SW, UT US	9/2/2008	0.11
US1UTWB0001	WEST HAVEN 2.0 SW, UT US	4/25/2009	0.11
US1UTWB0001	WEST HAVEN 2.0 SW, UT US	2/11/2010	0.11
US1UTWB0001	WEST HAVEN 2.0 SW, UT US	4/21/2010	0.11
US1UTWB0001	WEST HAVEN 2.0 SW, UT US	5/1/2010	0.11
US1UTWB0001	WEST HAVEN 2.0 SW, UT US	12/27/2010	0.11
US1UTWB0001	WEST HAVEN 2.0 SW, UT US	5/9/2013	0.11
US1UTWB0001	WEST HAVEN 2.0 SW, UT US	5/20/2013	0.11
US1UTWB0001	WEST HAVEN 2.0 SW, UT US	9/14/2013	0.11
US1UTWB0001	WEST HAVEN 2.0 SW, UT US	7/29/2014	0.11
US1UTWB0001	WEST HAVEN 2.0 SW, UT US	7/23/2015	0.11
US1UTWB0001	WEST HAVEN 2.0 SW, UT US	10/6/2015	0.11
US1UTWB0001	WEST HAVEN 2.0 SW, UT US	12/8/2015	0.11
US1UTWB0001	WEST HAVEN 2.0 SW, UT US	12/17/2015	0.11
US1UTWB0001	WEST HAVEN 2.0 SW, UT US	3/15/2016	0.11
US1UTWB0001	WEST HAVEN 2.0 SW, UT US	2/18/2017	0.11
US1UTWB0001	WEST HAVEN 2.0 SW, UT US	4/27/2017	0.11
US1UTWB0001	WEST HAVEN 2.0 SW, UT US	4/30/2018	0.11
US1UTWB0001	WEST HAVEN 2.0 SW, UT US	12/3/2018	0.11
US1UTWB0001	WEST HAVEN 2.0 SW, UT US	3/8/2019	0.11
US1UTWB0001	WEST HAVEN 2.0 SW, UT US	10/20/2019	0.11
US1UTWB0001	WEST HAVEN 2.0 SW, UT US	3/8/2020	0.11



