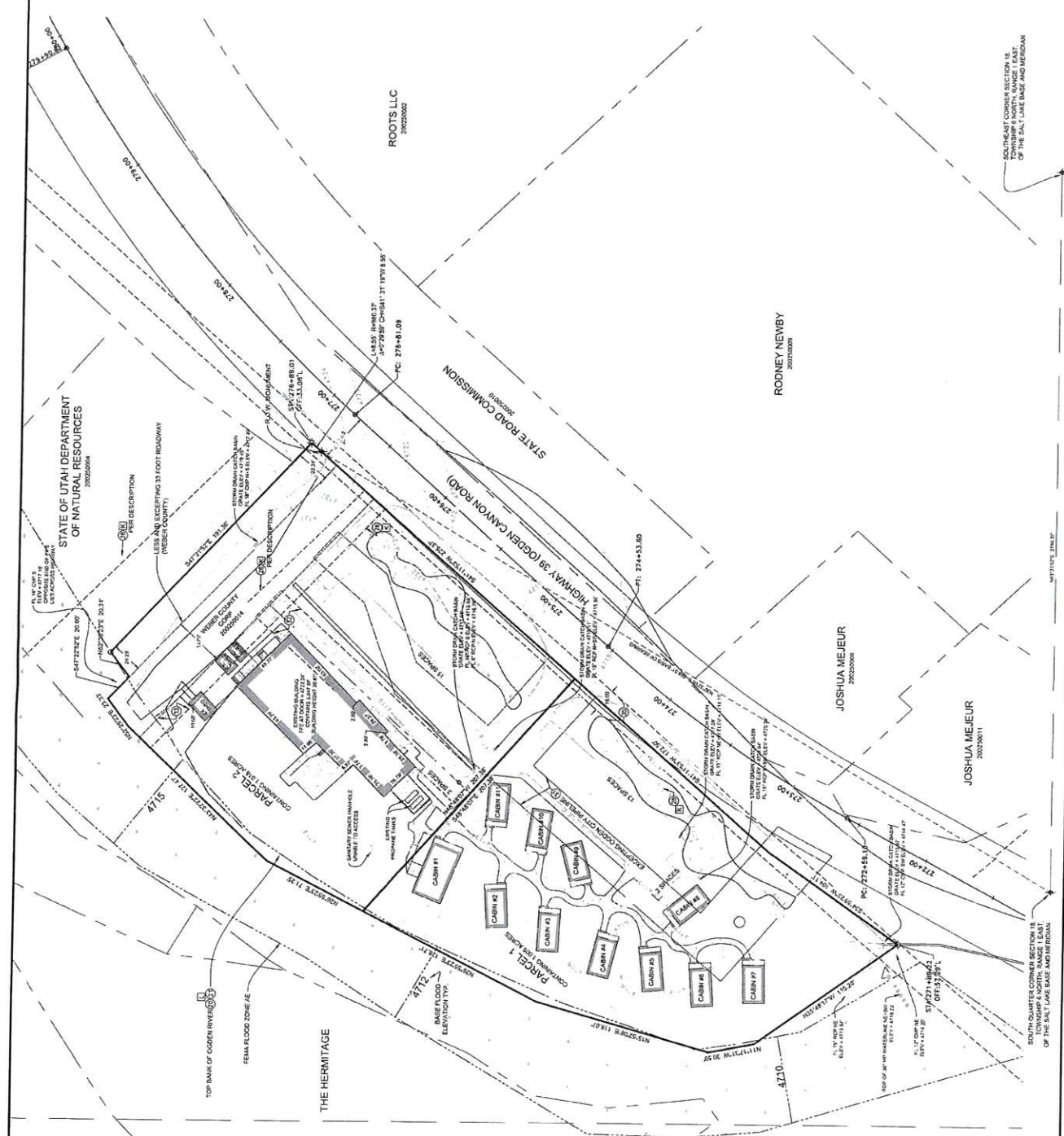


| NO. | DATE      | DESCRIPTION      |
|-----|-----------|------------------|
| 1   | 1.30.2018 | ISSUE FOR PERMIT |



**CABIN DETAILS**

|           |                           |                          |
|-----------|---------------------------|--------------------------|
| CABIN #1  | F.F.E. AT DOOR = 4729.86' | 105 SF                   |
|           | B.L.O.D. HEIGHT = 11.12'  |                          |
| CABIN #2  | F.F.E. AT DOOR = 4719.24' | 14,206.5 CONTAINS 301 SF |
|           | B.L.O.D. HEIGHT = 11.12'  |                          |
| CABIN #3  | F.F.E. AT DOOR = 4719.24' | 14,206.5 CONTAINS 301 SF |
|           | B.L.O.D. HEIGHT = 11.12'  |                          |
| CABIN #4  | F.F.E. AT DOOR = 4719.85' | 14,206.5 CONTAINS 301 SF |
|           | B.L.O.D. HEIGHT = 11.12'  |                          |
| CABIN #5  | F.F.E. AT DOOR = 4719.86' | 14,206.5 CONTAINS 301 SF |
|           | B.L.O.D. HEIGHT = 11.12'  |                          |
| CABIN #6  | F.F.E. AT DOOR = 4719.86' | 14,206.5 CONTAINS 301 SF |
|           | B.L.O.D. HEIGHT = 11.12'  |                          |
| CABIN #7  | F.F.E. AT DOOR = 4719.86' | 14,206.5 CONTAINS 301 SF |
|           | B.L.O.D. HEIGHT = 11.12'  |                          |
| CABIN #8  | F.F.E. AT DOOR = 4719.86' | 14,206.5 CONTAINS 301 SF |
|           | B.L.O.D. HEIGHT = 11.12'  |                          |
| CABIN #9  | F.F.E. AT DOOR = 4719.86' | 14,206.5 CONTAINS 301 SF |
|           | B.L.O.D. HEIGHT = 11.12'  |                          |
| CABIN #10 | F.F.E. AT DOOR = 4719.86' | 14,206.5 CONTAINS 301 SF |
|           | B.L.O.D. HEIGHT = 11.12'  |                          |
| CABIN #11 | F.F.E. AT DOOR = 4729.15' | 14,206.5 CONTAINS 301 SF |
|           | B.L.O.D. HEIGHT = 11.12'  |                          |

**LEGEND**

- COUNTY MONUMENT AS NOTED
- SET 24" PERMANENT CAP
- MARKED GARDNER ENGINEERING
- PROPERTY LINE
- ADJACENT PARCEL
- SECTION LINE
- CENTERS LINE
- RIGHT-OF-WAY LINE
- EXISTING FENCE LINE
- EXISTING WATER LINE
- EXISTING SANITARY SEWER LINE
- EXISTING STORM DRAIN LINE
- EXISTING OVERHEAD POWERLINE
- EXISTING UNDERGROUND POWERLINE
- EXISTING FIBER OPTIC LINE
- EXISTING GAS LINE
- DOOR CITY PHEASANT PARCEL
- HERN COUNTY PHEASANT PARCEL

Scale in Feet  
 1" = 30'

STATE OF UTAH DEPARTMENT OF NATURAL RESOURCES  
 STATE ROAD COMMISSION  
 HIGHWAY 39 (OGDEN CANYON ROAD)  
 ROOTS, LLC  
 RODNEY NEWBY  
 JOSHUA MEJOUR

SOUTH QUARTER CORNER SECTION 18 OF THE SALT LAKE BASE AND MERIDIAN  
 SOUTH QUARTER CORNER SECTION 18 OF THE SALT LAKE BASE AND MERIDIAN

Parking Summary

Dwelling units – 23 spaces

9 Table restaurant – 9 spaces

Retail less than 200sf – 1 space

Total – 33 spaces

Actual Parking Summary Onsite

15 spaces NE

3 spaces W

13 spaces SE

2 spaces S

Total – 33 spaces