

# SUMMIT AT POWDER MOUNTAIN PHASE I

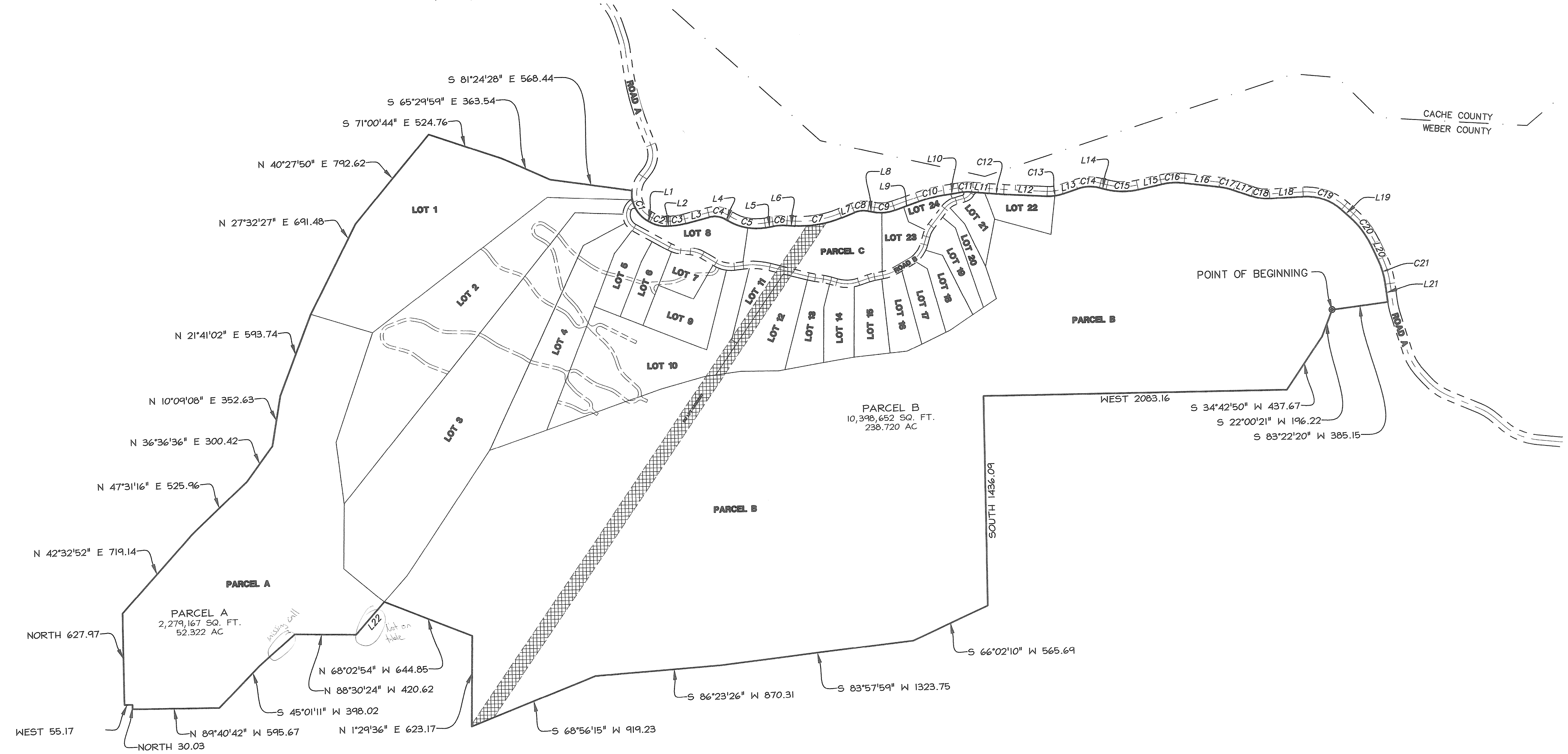
LOCATED IN THE NORTHEAST QUARTER OF SECTION 12, AND SOUTHEAST QUARTER OF SECTION 1, T 7N, R 1E, S1B1M, AND THE SOUTH HALF OF SECTION 6, AND SECTION 7, AND THE SOUTH HALF OF SECTION 5, AND THE NORTH HALF OF SECTION 8, T 7N, R 2E, S1B1M.

See Phase 6 for easement

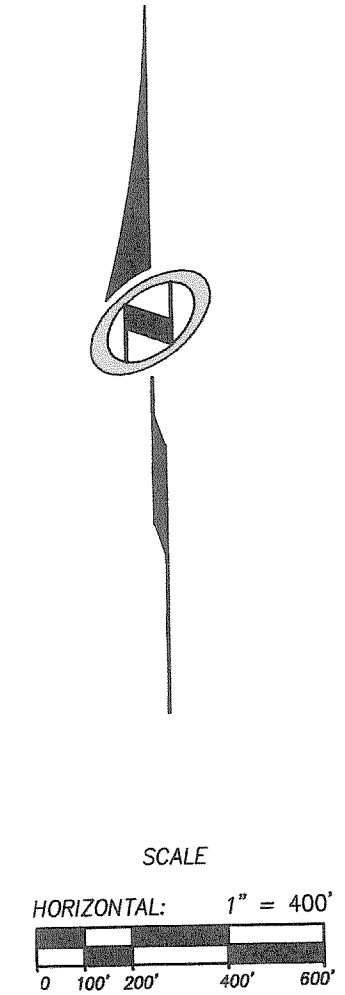
Line #/Curve #	Length	Direction/Delta	Radius
L21	118.34	N 6°37'40" W	
C21	175.52	17.74	567.00
L20	113.52	S 24°21'51" E	
C20	233.16	23.56	567.00
L19	81.02	S 47°55'31" E	
C19	283.40	44.24	367.00
L18	231.14	N 87°49'50" E	
C18	129.12	22.22	333.00
L17	128.40	S 69°57'12" E	
C17	101.87	12.50	467.00
L16	241.01	S 82°27'04" E	
C16	156.35	19.18	467.00
L15	163.17	N 78°21'59" E	
C15	224.93	26.68	483.00
L14	46.14	S 74°57'04" E	
C14	152.87	32.80	267.00
L13	103.92	N 72°14'41" E	
C13	112.32	21.39	300.82
L12	297.63	S 86°21'42" E	
C12	101.09	1.89	3056.76
L11	114.11	S 84°28'01" E	
C11	92.26	13.44	393.15
L10	101.93	N 82°05'18" E	
C10	181.70	10.77	967.00
L9	174.07	N 71°19'19" E	
C9	147.16	29.79	283.00
L8	41.36	S 78°53'05" E	
C8	93.79	32.18	167.00
L7	94.64	N 68°56'11" E	
C7	326.41	25.51	733.00
L6	56.26	S 85°32'57" E	
C6	93.18	12.75	418.71
L5	53.97	N 81°42'00" E	
C5	271.10	40.56	383.00
L4	14.03	S 57°44'42" E	
C4	117.62	45.84	147.00
L3	166.99	S 76°24'39" W	
C3	107.33	12.73	483.21
L2	27.32	N 89°08'14" E	
C2	118.05	31.34	215.83
L1	19.16	S 59°31'27" E	
C1	246.71	66.36	213.00

Main description above heavy in left 2 cells missing on ending list.

Delta given in Decimals Degrees



- LEGEND
- EASEMENT
  - COUNTY LINE
  - RIGHT OF WAY
  - BOUNDARY LINE
  - BUILD AREA
  - EASEMENT
  - BA BUILD AREA
  - AC ACRES



PRELIMINARY PLAN FOR REVIEW ONLY!

## SUMMIT AT POWDER MOUNTAIN PHASE I

AREA I

LOCATED IN THE NORTHEAST QUARTER OF SECTION 12, AND SOUTHEAST QUARTER OF SECTION 1, T 7N, R 1E, S1B1M, AND THE SOUTH HALF OF SECTION 6, AND SECTION 7, AND THE SOUTH HALF OF SECTION 5, AND THE NORTH HALF OF SECTION 8, T 7N, R 2E, S1B1M.

Sheet 3 of 11

**N/V/5** **NOLTE VERTICALFIVE**  
 5217 SOUTH STATE STREET, SUITE 300 MURRAY, UT 84107  
 801.743.1300 TEL. 801.743.0300 FAX WWW.NOLTE.COM

RECORDED #  
 STATE OF UTAH, COUNTY OF WEBER, RECORDED AND FILED AT THE REQUEST OF: \_\_\_\_\_ ENTRY NO: \_\_\_\_\_  
 DATE: \_\_\_\_\_ TIME: \_\_\_\_\_ BOOK: \_\_\_\_\_ PAGE: \_\_\_\_\_  
 FEE \$ \_\_\_\_\_ WEBER COUNTY RECORDER