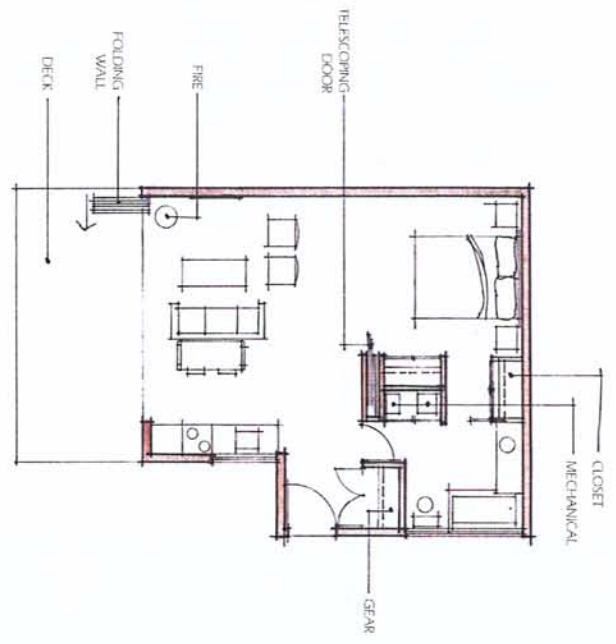
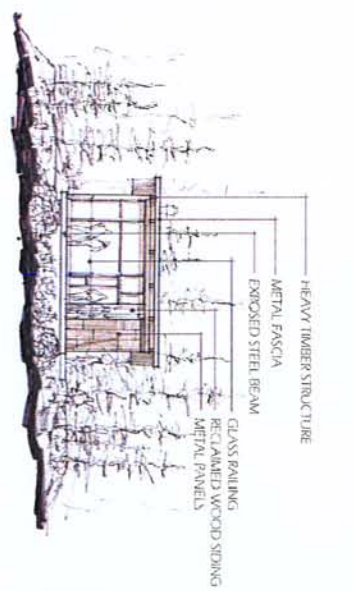


Exhibit F



RIDGE NEST 1

DATE	JANUARY 25, 2012
PROJECT	1201
DRAWN BY	PK/REV/AV
VERSION	PHLO
REVISIONS	
NO.	DESCRIPTION
1	PHLO
2	PHLO
3	PHLO
4	PHLO
5	PHLO
6	PHLO
7	PHLO
8	PHLO
9	PHLO
10	PHLO
11	PHLO
12	PHLO
13	PHLO
14	PHLO
15	PHLO
16	PHLO
17	PHLO
18	PHLO
19	PHLO
20	PHLO
21	PHLO
22	PHLO
23	PHLO
24	PHLO
25	PHLO
26	PHLO
27	PHLO
28	PHLO
29	PHLO
30	PHLO
31	PHLO
32	PHLO
33	PHLO
34	PHLO
35	PHLO
36	PHLO
37	PHLO
38	PHLO
39	PHLO
40	PHLO
41	PHLO
42	PHLO
43	PHLO
44	PHLO
45	PHLO
46	PHLO
47	PHLO
48	PHLO
49	PHLO
50	PHLO
51	PHLO
52	PHLO
53	PHLO
54	PHLO
55	PHLO
56	PHLO
57	PHLO
58	PHLO
59	PHLO
60	PHLO
61	PHLO
62	PHLO
63	PHLO
64	PHLO
65	PHLO
66	PHLO
67	PHLO
68	PHLO
69	PHLO
70	PHLO
71	PHLO
72	PHLO
73	PHLO
74	PHLO
75	PHLO
76	PHLO
77	PHLO
78	PHLO
79	PHLO
80	PHLO
81	PHLO
82	PHLO
83	PHLO
84	PHLO
85	PHLO
86	PHLO
87	PHLO
88	PHLO
89	PHLO
90	PHLO
91	PHLO
92	PHLO
93	PHLO
94	PHLO
95	PHLO
96	PHLO
97	PHLO
98	PHLO
99	PHLO
100	PHLO

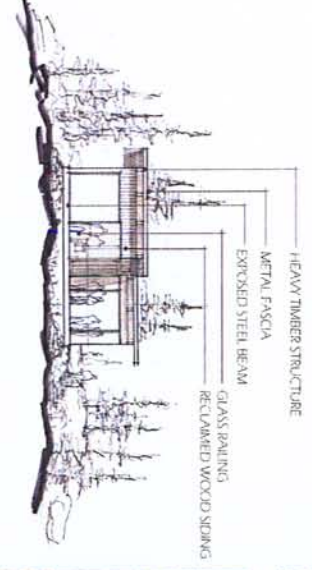
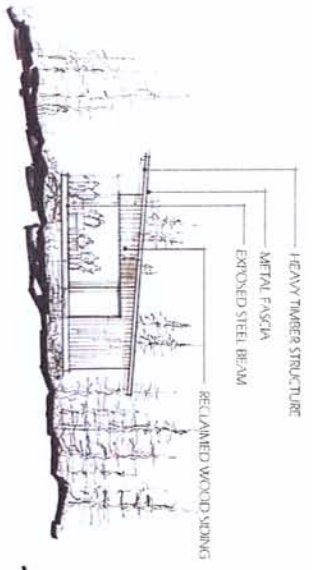
A1.1



SUMMIT EDEN
 PHASE 1 PRUD SUBMITTAL
 POWDER MOUNTAIN, WEBER COUNTY, UTAH



ARCHITECT: BERTOLDI ARCHITECTS
 PROJECT: SUMMIT EDEN PHASE 1 PRUD SUBMITTAL
 LOCATION: POWDER MOUNTAIN, WEBER COUNTY, UTAH
 DATE: JANUARY 25, 2013



RIDGE NEST 2



BERTOLDI ARCHITECTS
 ARCHITECTURE • PLANNING • INTERIORS
1770 INDEPENDENCE BLVD. SUITE 100 BOULDER, CO 80502

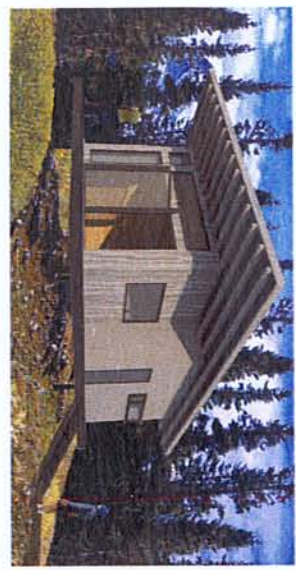
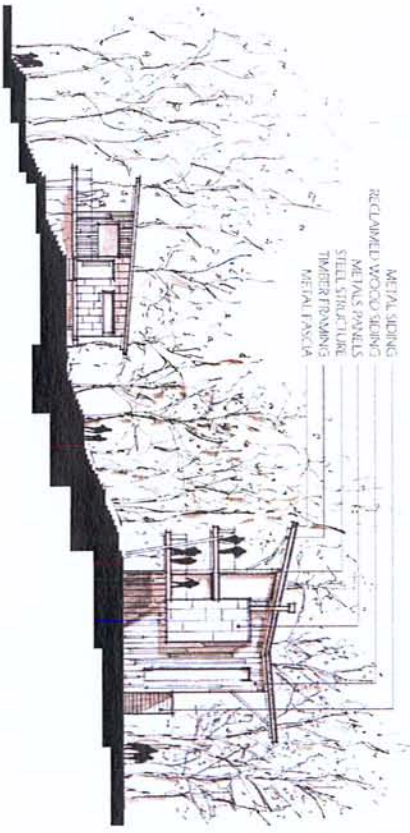
SUMMIT EDEN
 PHASE 1 PRUD SUBMITTAL

POWDER MOUNTAIN, WEBER COUNTY, UTAH



DATE	JANUARY 25, 2013
PROJECT	LMI
DESIGNED BY	MEMORANDUM
ARCHITECT	PRUD
PROPOSING	
CLIENT	
SCALE	
PROJECT NO.	
SHEET NO.	A1.2

© 2013 Bertoldi Architects, Inc. All rights reserved. No part of this document may be reproduced without the written permission of Bertoldi Architects, Inc. This document is the property of Bertoldi Architects, Inc. and is to be used only for the project and site identified herein.



VILLAGE NESTS



DATE	January 24, 2013
PROJECT	VILLAGE NESTS
DESIGNED BY	BERTOLDI ARCHITECTS
ENGINEERED BY	FRANK
CONTRACTOR	
ARCHITECTS	

A1.3

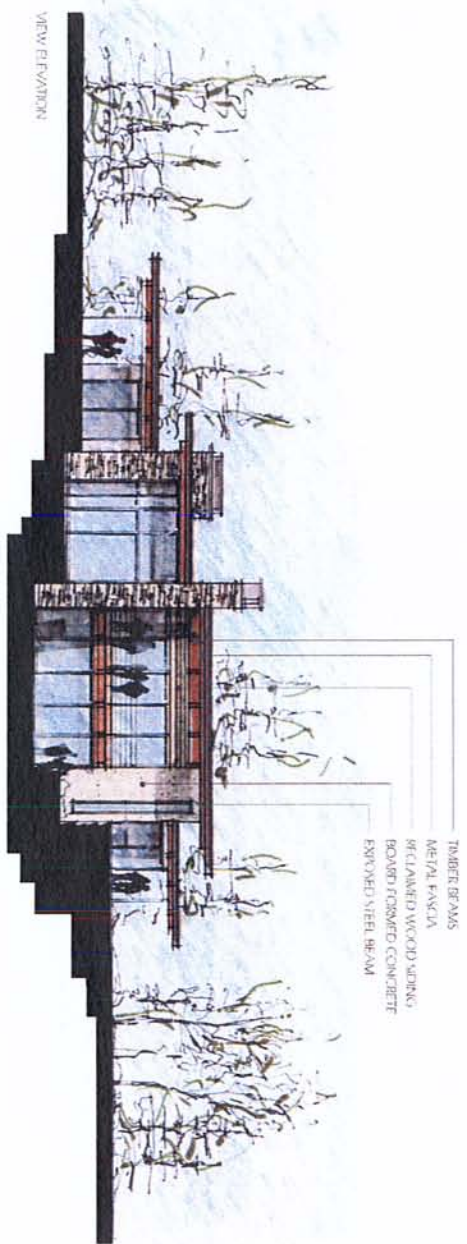


SUMMIT EDEN
PHASE 1 PRUD SUBMITTAL

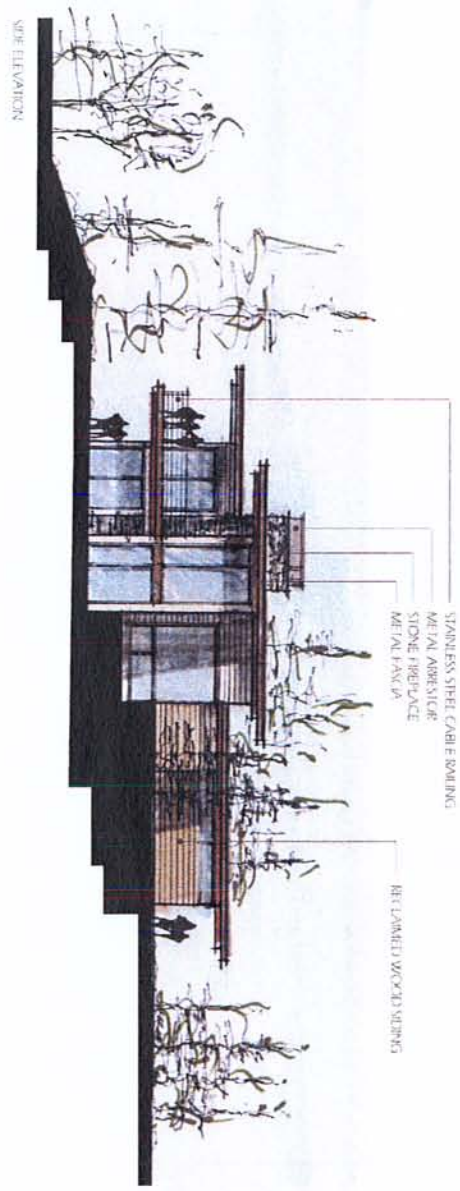
POWDER MOUNTAIN, WEBER COUNTY, UTAH



Summit Eden is a project of Summit Eden LLC, a subsidiary of Summit Eden Holdings LLC, a subsidiary of Summit Eden Group LLC, a subsidiary of Summit Eden Group Inc. All rights reserved. Summit Eden Group Inc. is a registered trademark of Summit Eden Group Inc. Summit Eden is a registered trademark of Summit Eden Group Inc. Summit Eden Group Inc. is a registered trademark of Summit Eden Group Inc. Summit Eden Group Inc. is a registered trademark of Summit Eden Group Inc.



TIMBER BEAMS
METAL FASCIA
RECLAIMED WOOD SIDING
BOARD FORMED CONCRETE
EXPOSED STEEL BEAM



METAL AWNING
STONE + BRICKFACE
METAL FASCIA
STAINLESS STEEL CABLE RAILING
RECLAIMED WOOD SIDING

CABIN RESIDENCE

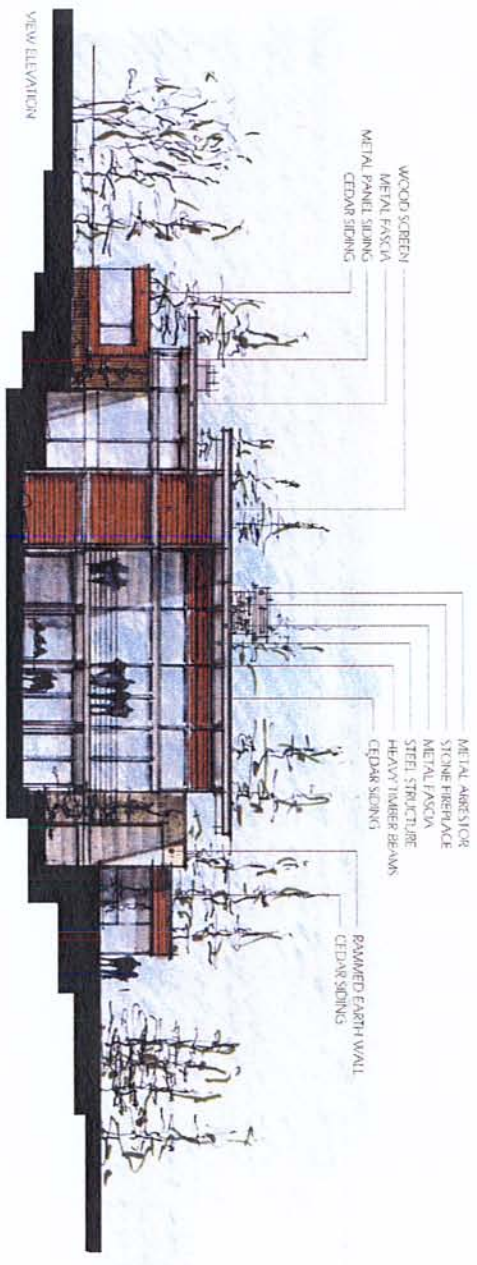
DATE	JANUARY 24, 2013
PROJECT	1501
DESIGNED BY	
INTERIOR	
MECHANICAL	
ELECTRICAL	
PLUMBING	
ARCHITECT	BERTOLDI ARCHITECTS
CLIENT	Summit Eden
PROJECT NUMBER	A1.4



SUMMIT EDEN PHASE 1 PRUD SUBMITTAL

POWDER MOUNTAIN, WEBER COUNTY, UTAH





ESTATE RESIDENCE

DATE	JANUARY 23, 2013
PROJECT	ESTATE RESIDENCE
DESIGNED BY	
INTERIOR BY	
VERSION	FINAL
PROVISIONS	
SHEET NUMBER	A1.5

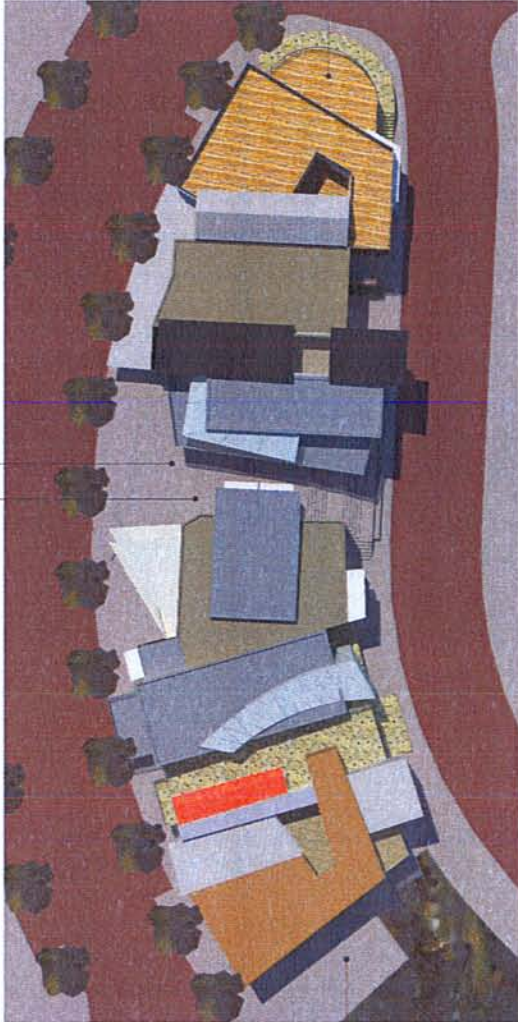


SUMMIT EDEN
PHASE 1 PRUD SUBMITTAL

POWDER MOUNTAIN, WEBER COUNTY, UTAH



SOUTH



NORTH



VILLAGE CORE ROOF PLAN & SIDE ELEVATIONS



Vertical text on the left side of the page, likely a project identifier or reference code.



SUMMIT EDEN
PHASE 1 PRUD SUBMITTAL
POWDER MOUNTAIN, WEBER COUNTY, UTAH



Table with project details: DATE (JANUARY 24, 2013), PROJECT (SUMMIT EDEN), PHASE (PHASE 1), VERSION (REVISED), ARCHITECT (BERTOLDI ARCHITECTS), SHEET TITLE (VILLAGE CORE ROOF PLAN & SIDE ELEVATIONS), SHEET NUMBER (A1.7).



UPPER STREETSCAPE



MID-BLOCK PLAZA



LOWER STREETSCAPE

VILLAGE CORE VIGNETTES





VIEW FROM NORTH EAST



VIEW FROM NORTH WEST



VILLAGE CORE SECTION AND VICINETTES



Summit Eden is a registered trademark of Summit Eden LLC. All other trademarks are the property of their respective owners. © 2013 Summit Eden LLC. All rights reserved.

DATE	JANUARY 25, 2013
PROJECT	EDEN
CLIENT	Summit Eden LLC
ARCHITECT	Bertoldi Architects
VERSION	PHASE 1
REVISIONS	
DATE	
DESCRIPTION	



SUMMIT EDEN
PHASE 1 PRUD SUBMITTAL

POWDER MOUNTAIN, WEBER COUNTY, UTAH



A1.9