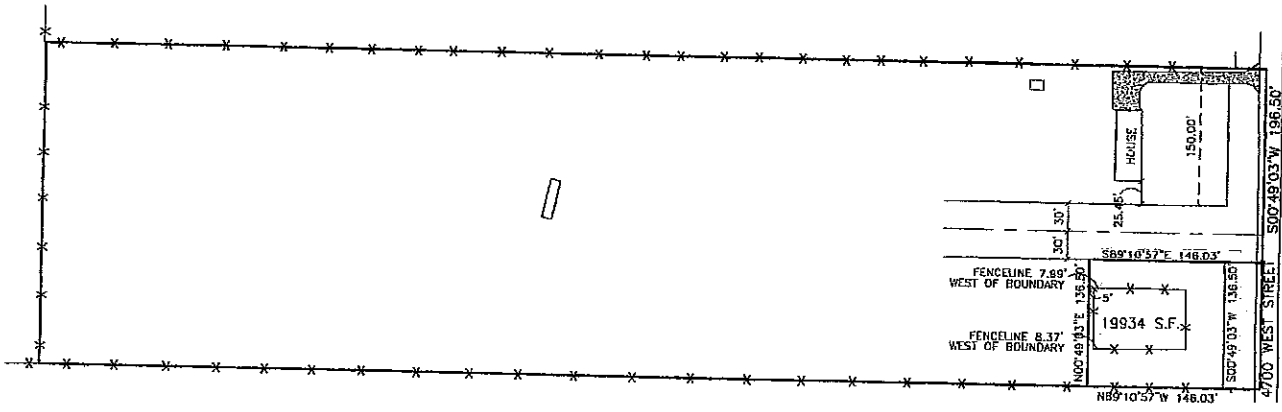
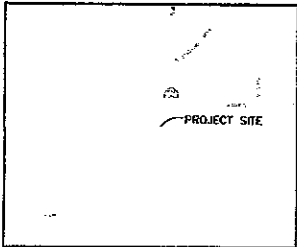


JEFF BUTLER PROPERTY



LEGEND

- = BOUNDARY LINE
- - - = ADJOINING PROPERTY
- x x x = EASEMENTS



Reeve & Associates, Inc.

801 BRADSHAW STREET, SUITE 11, OREM, UTAH 84057
 TEL: (801) 221-3100 FAX: (801) 221-3555 WWW: WWW.REEVE-ASSOCIATES.COM
 LAND SURVEYORS • CIVIL ENGINEERS • LAND SURVEYORS
 PUBLIC ENGINEERS • TELEPHONE ENGINEERS • LANDSCAPE ARCHITECTS

Project Info.

Designer: E. ROCHE

Date: _____

Name: JEFF BUTLER

Number: 6403-01

Scale: 1" = 100'

After careful review of your request to relocate Rocky Mountain Power's access to the Taylor substation located at 4700 West 2900 South, Weber County Utah, we have determined that the proposed new access will not work for our needs therefore the existing access must remain in place. Please don't hesitate to call should you require any additional information.

Thanks

Mike Wolf

Rocky Mountain Power

Transaction Services

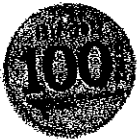
1407 West North Temple, Suite 110

Salt Lake City, Utah 84116

Office: 801 220-2485

Fax: 801 220-4373

mike.wolf@rockymountainpower.net



Proudly serving our customers for 100 years.