

DEMOLITION PLAN

Key Note Site Demolition

Item	Description	Quantity
1	SAWCUT EXISTING CONCRETE	75 LF
2	SAWCUT EXISTING ASPHALT PAVEMENT	66 LF
3	REMOVE AND DISPOSE ASPHALT PAVEMENT	2,325 SF
4	REMOVE AND DISPOSE CONCRETE FLATWORK	892 SF
5	REMOVE & DISPOSE CONCRETE CURB & GUTTER	35 LF
6	REMOVE & DISPOSE 6" CONCRETE CURB	47 LF
7	REMOVE INLET BOX	2 EA
8	FIND AND PLUG EXISTING DRAINAGE PIPE	1 LS
9	REMOVE & DISPOSE EXISTING LANDSCAPING	1 LS
10	MOVE SHED TO NORTH	1 LS
11	EXISTING LANDSCAPING TO REMAIN	

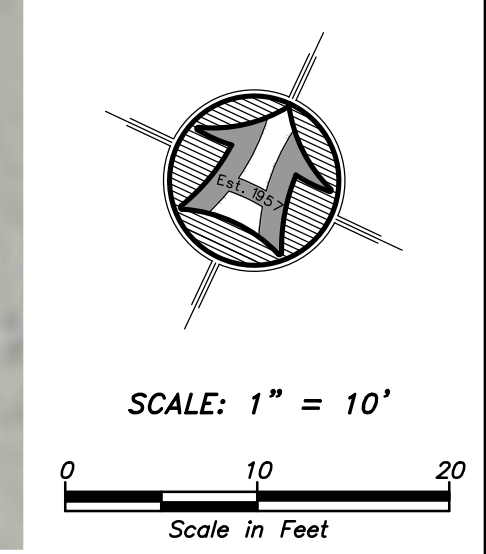


HANSEN & ASSOCIATES, INC.
 Consulting Engineers and Land Surveyors
 538 North Main Street, Brigham, Utah 84302
 Visit us at www.haines.net
 Ogden City (801) 399-4605 Logan (435) 732-8272
 Celebrating over 60 Years of Business



Drawn By: MBJ Date: 03/10/20
 Designed By:
 Checked By:
 Approved By:
 Scale: 1" = 10'
 Drawing File: 20-5-2 V15.DWG
 JOB NUMBER: 20-5-2

EXISTING CONDITIONS AND DEMOLITION PLAN FOR
**FOREMASTER ENTERPRISES
 BUILDING ADDITION**
 2397 N. RULON WHITE BLVD.
 OGDEN UTAH 84404
 A Part of Section 36, Township 10 North, Range 2 West, S.L.B.&M.



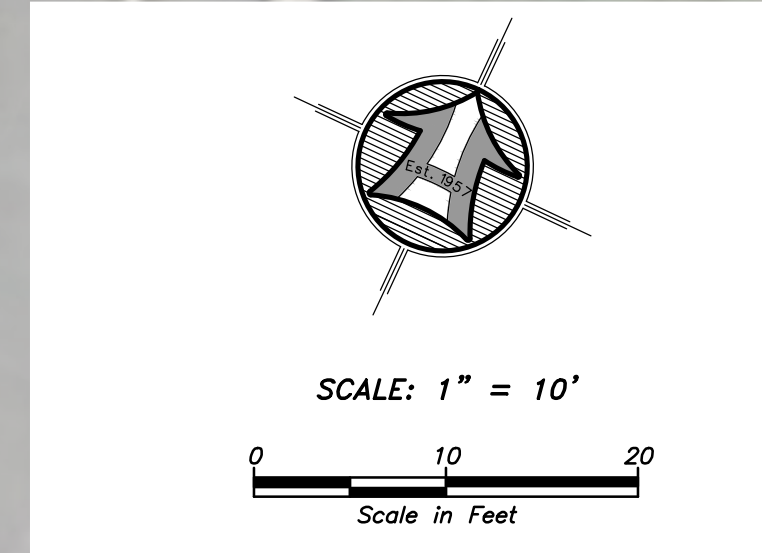
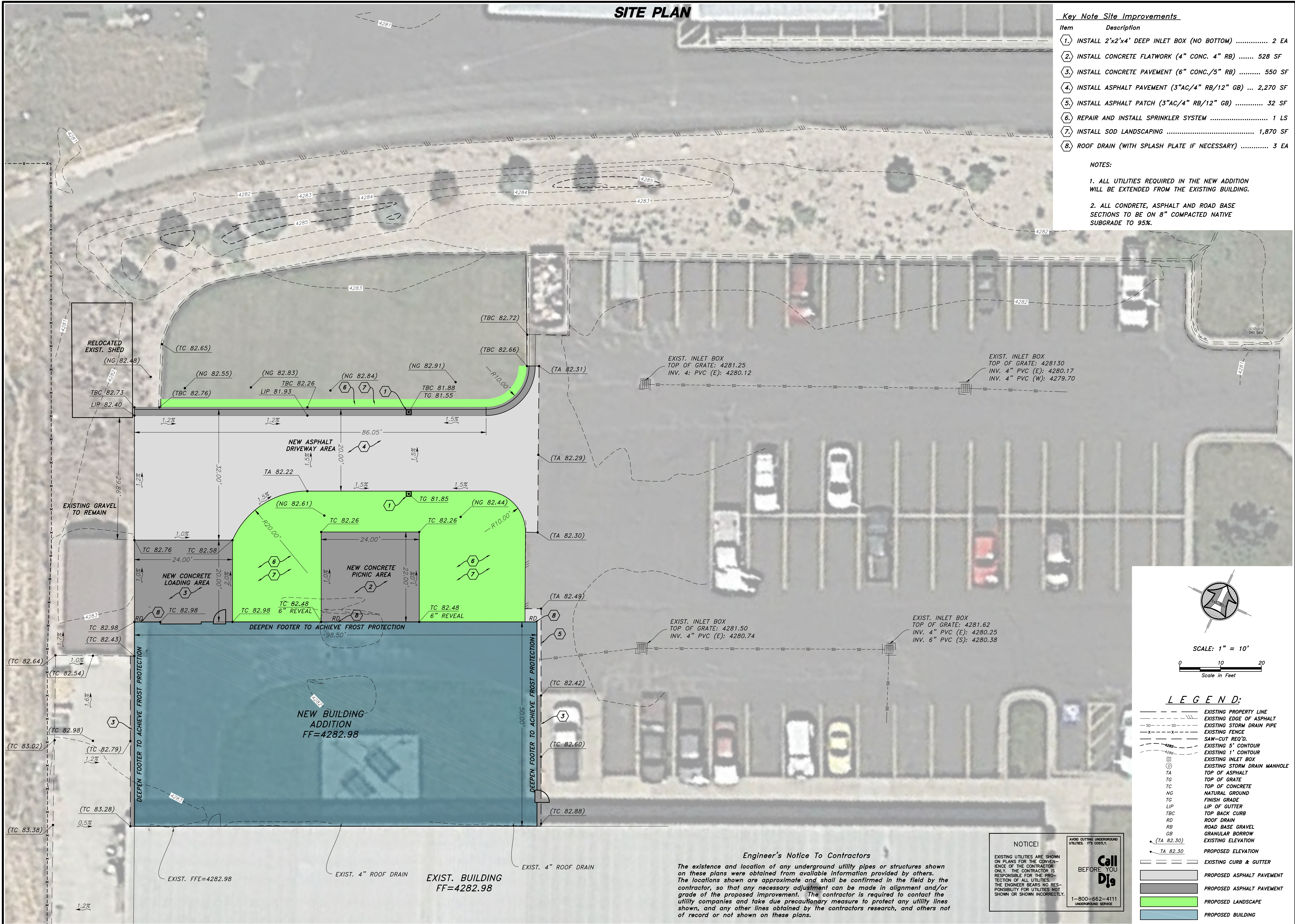
SITE PLAN

Key Note Site Improvements

Item	Description	Quantity
1	INSTALL 2'x2'x4' DEEP INLET BOX (NO BOTTOM)	2 EA
2	INSTALL CONCRETE FLATWORK (4" CONC. 4" RB)	528 SF
3	INSTALL CONCRETE PAVEMENT (6" CONC./5" RB)	550 SF
4	INSTALL ASPHALT PAVEMENT (3"AC/4" RB/12" GB) ...	2,270 SF
5	INSTALL ASPHALT PATCH (3"AC/4" RB/12" GB)	32 SF
6	REPAIR AND INSTALL SPRINKLER SYSTEM	1 LS
7	INSTALL SOD LANDSCAPING	1,870 SF
8	ROOF DRAIN (WITH SPLASH PLATE IF NECESSARY)	3 EA

NOTES:

- ALL UTILITIES REQUIRED IN THE NEW ADDITION WILL BE EXTENDED FROM THE EXISTING BUILDING.
- ALL CONCRETE, ASPHALT AND ROAD BASE SECTIONS TO BE ON 8" COMPACTED NATIVE SUBGRADE TO 95%.



LEGEND:

	EXISTING PROPERTY LINE
	EXISTING EDGE OF ASPHALT
	EXISTING STORM DRAIN PIPE
	EXISTING FENCE
	SAW-CUT ROAD
	EXISTING 5' CONTOUR
	EXISTING 1' CONTOUR
	EXISTING INLET BOX
	EXISTING STORM DRAIN MANHOLE
	TOP OF ASPHALT
	TOP OF GRATE
	TOP OF CONCRETE
	NATURAL GROUND
	FINISH GRADE
	LIP OF GUTTER
	TOP BACK CURB
	ROOF DRAIN
	ROAD BASE GRAVEL
	GRANULAR BORROW
	EXISTING ELEVATION
	PROPOSED ELEVATION
	EXISTING CURB & GUTTER
	PROPOSED ASPHALT PAVEMENT
	PROPOSED ASPHALT PAVEMENT
	PROPOSED LANDSCAPE
	PROPOSED BUILDING

NOTICE!

EXISTING UTILITIES ARE SHOWN ON PLANS FOR THE CONVENIENCE OF THE CONTRACTOR ONLY. THE CONTRACTOR IS RESPONSIBLE FOR THE PROTECTION OF ALL UTILITIES. THE ENGINEER BEARS NO RESPONSIBILITY FOR UTILITIES NOT SHOWN OR SHOWN INCORRECTLY.

1-800-662-4111
 UNDERGROUND SERVICE

Engineer's Notice To Contractors

The existence and location of any underground utility pipes or structures shown on these plans were obtained from available information provided by others. The locations shown are approximate and shall be confirmed in the field by the contractor, so that any necessary adjustment can be made in alignment and/or grade of the proposed improvement. The contractor is required to contact the utility companies and take due precautionary measure to protect any utility lines shown, and any other lines obtained by the contractor's research, and others not of record or not shown on these plans.

HANSEN & ASSOCIATES, INC.
 Consulting Engineers and Land Surveyors
 538 North Main Street, Brigham, Utah 84302
 Visit us at www.haies.net
 Logan Ogden (435) 399-4605 (801) 399-4605 (435) 732-8272
 Brigham City
 Celebrating over 60 Years of Business



Drawn By: MBJ Date: 03/10/20
 Designed By:
 Checked By:
 Approved By:
 Scale: 1" = 10'
 Drawing File: 20-5-2 V15.DWG
 JOB NUMBER: 20-5-2

FOREMASTER ENTERPRISES
BUILDING ADDITION
 2397 N. RULON WHITE BLVD.
 OGDEN UTAH 84404
 A Part of Section 36, Township 10 North, Range 2 West, S.L.B.&M.

Sheet
2
 of
2
 Sheets