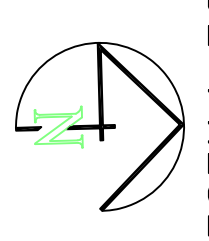


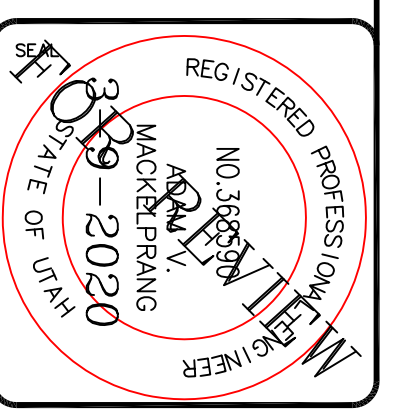
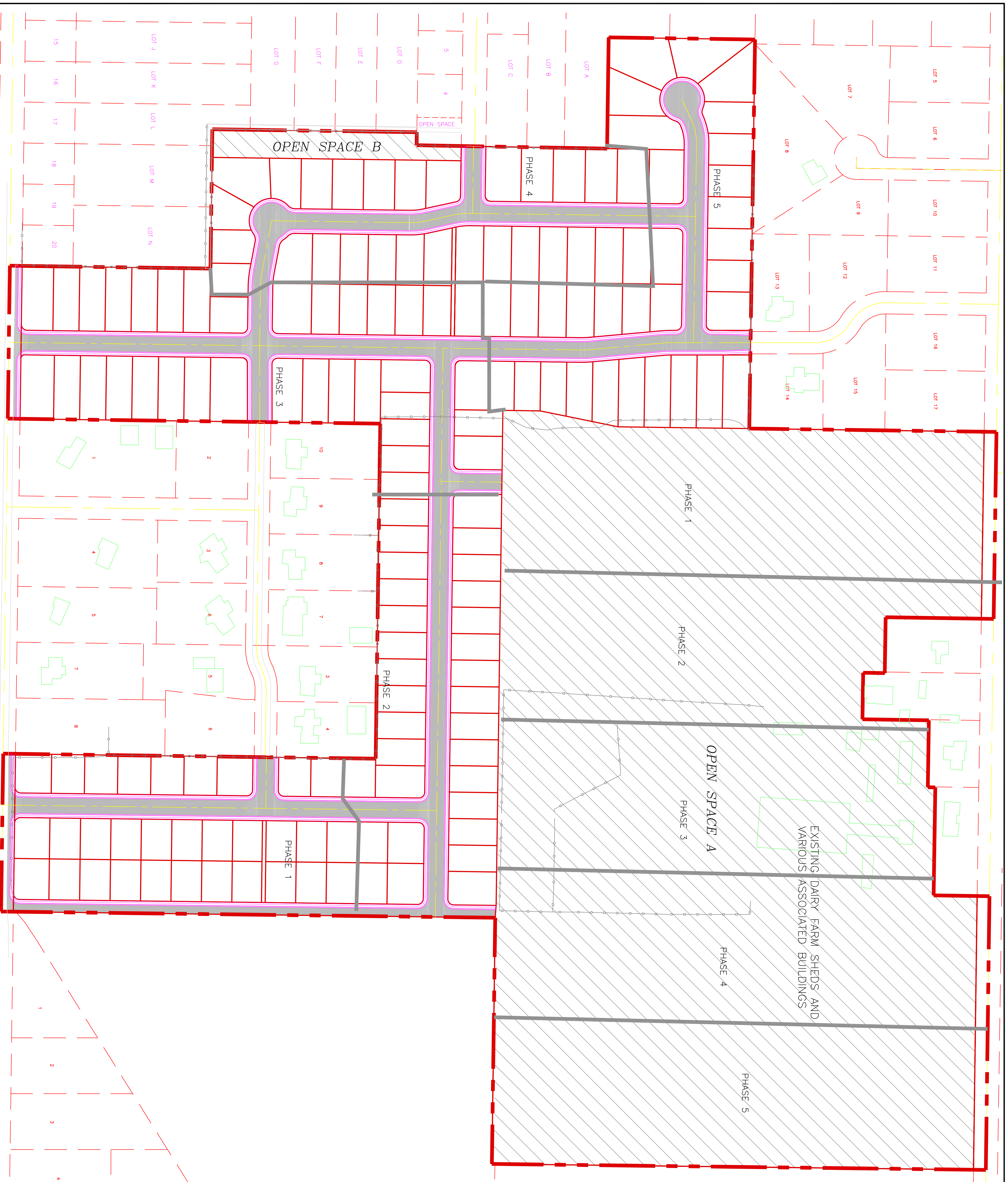
**SUNSET MEADOWS**  
 PART OF THE NORTH HALF OF SECTION 28, TOWNSHIP 6  
 NORTH, RANGE 2 WEST  
 SALT LAKE BASELINE AND MERIDIAN  
 WEBER COUNTY, TAYLOR, UTAH  
**OPEN SPACE PRESERVATION PLAN**



0 60 120 240  
 SCALE: 1" = 120' (2x34" PLAN SET)

**NOTES:**  
 1- OPEN SPACE "A" WILL BE OWNED BY RIVER VALLEY DEVELOPMENT AND WILL BE LEASED TO A FARMER FOR AGRICULTURAL PURPOSES. A PART OF THIS OPEN SPACE WILL BE USED TO STORE STORM WATER FROM THE SUBDIVISION IN SHALLOW PONDS. THE FARMER WILL BE RESPONSIBLE FOR THE MAINTENANCE OF SAID PONDS FOR DETENTION OF STORM WATER FROM THE SUBDIVISION. THIS PARCEL WILL BE SOLD TO AN ANONYMOUS OWNER WHO WILL ALSO BE RESPONSIBLE FOR ITS MAINTENANCE. THIS PARCEL MAY ADDITIONALLY BE USED FOR AGRICULTURAL PURPOSES GIVEN THE INTEGRITY AND FUNCTION OF THE POND REMAINS UNIMPAIRED.  
 2- PHASING OF OPEN SPACE TO BE CONSISTENT WITH APPROVED OPEN SPACE PERCENTAGE.

 PRIVATELY OWNED OPEN SPACE



**ALLIANCE CONSULTING ENGINEERS**  
 150 EAST 200 NORTH SUITE P  
 LOGAN, UTAH 84321  
 (435)755-5121  
 alliancelogan@yahoo.com

**CONFIDENTIALITY AND COPYRIGHT NOTICE**  
 UNAUTHORIZED USE, DISCLOSURE, OR COPYING OF THIS DRAWING IS PROHIBITED.  
 CONSTRUCTION DOCUMENTS THAT ARE DISTRIBUTED FOR BIDDING PURPOSES SHALL NOT BE RETURNED AND SHALL BE DESTROYED WITHIN 30 DAYS AFTER THE BID OPENING BY THE PLAN HOLDER.  
 COPYRIGHT 2005

No.	REVISIONS/ SUBMISSIONS	DATE

REVIEWED : \_\_\_\_\_ DRAWN : \_\_\_\_\_  
 CAD FILE : \_\_\_\_\_ PROJECT NO. : \_\_\_\_\_

PROJECT TITLE  
**SUNSET MEADOWS**  
 DRAWING TITLE  
**OPEN SPACE PRESERVATION PLAN**

DATE : MARCH 2020  
 DRAWING No. **2**