




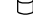
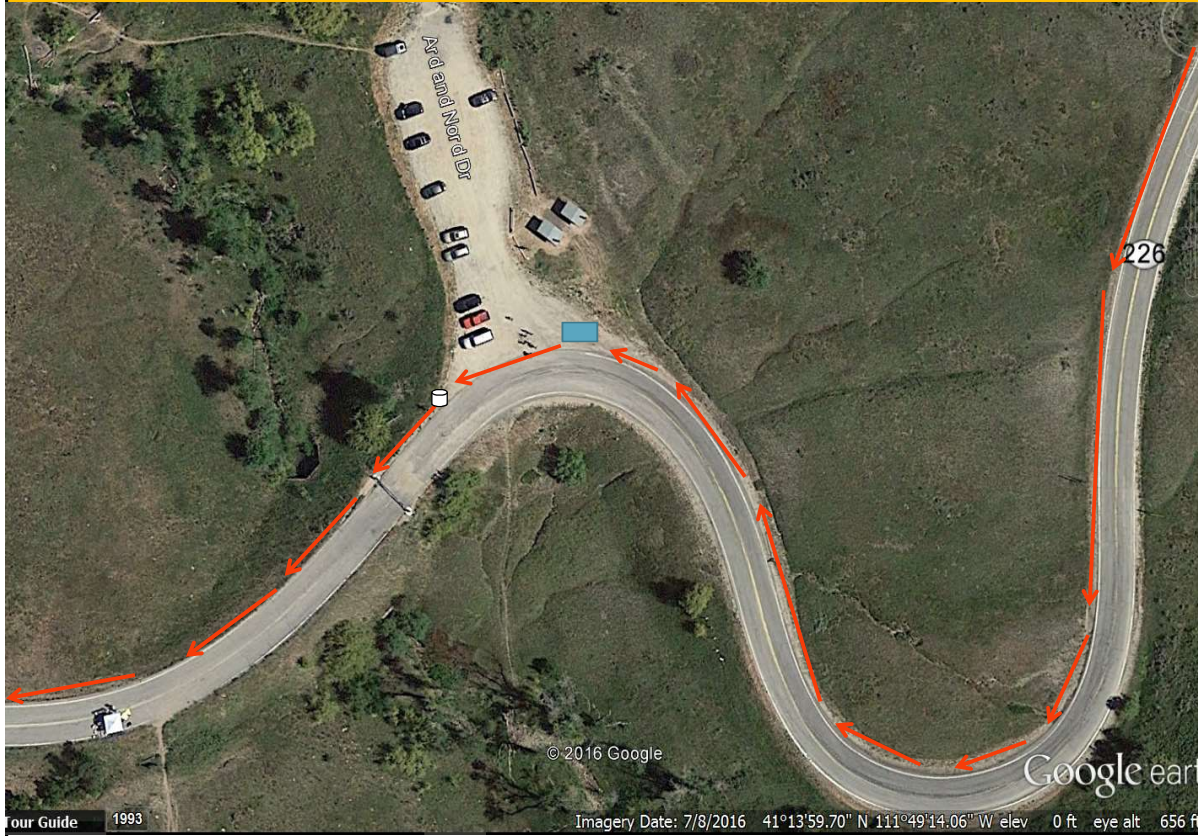


WS 12b Venue:	Location: Old Snow Basin Rd 41.233345, -111.820863	Venue Contact:	Night Time Hours 7:45 PM - 6:30 AM
Max Parking Space Peak Parking Needs Peak Time	Volunteer Shift Time Shift Start End Shift 1 3:00 PM Shift 2 10:45 PM Shift 3	Key:  Parking  Van's Path  Runner's Path	 Water Station  Volunteer  Trash Box

Overview



Overview Notes

Water Station is 2.2 miles away from the next Water Station.

Place a trash boxes after water station for runners to throw cups away on the go. VERY IMPORTANT: Sweep entire WS area for trash after the last runner. Venue must be left spotless. Thank you!!

Once there is only 1 cooler left - text race command... Before then there is no need to text race command saying you are low on water.

Volunteer Duties

A	Assist runners in filling water bottles, make sure coolers stay full	2
		2

