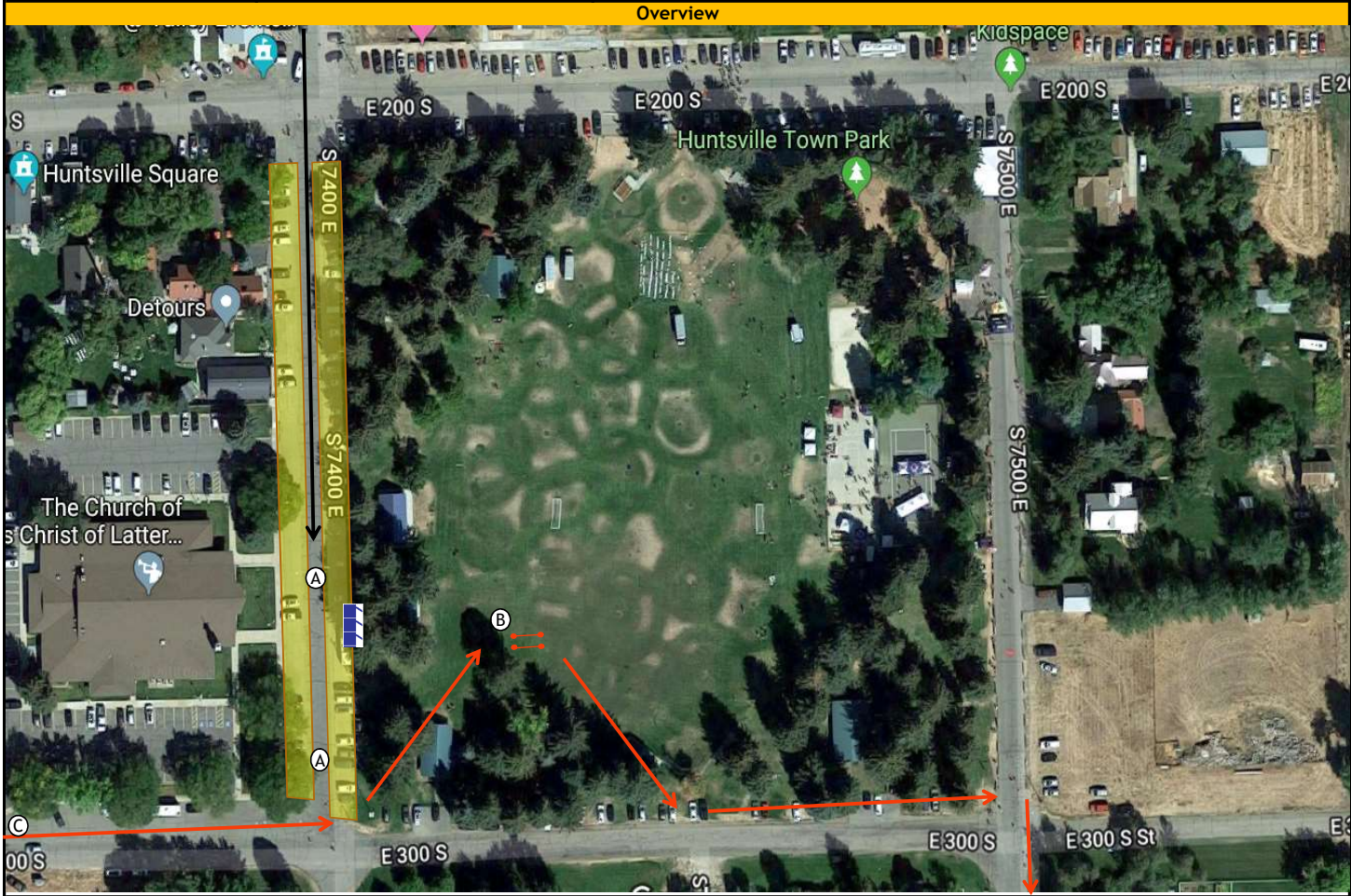


Exchange 9	Park	Location: Huntsville Town Park 277 S 7400 E, Huntsville, UT 84317 (41.259522, -111.770060)	Venue Contact:	Night Time Hours 7:45 PM - 6:30 AM
Max Parking Space Peak Parking Needs Peak Time	100 61 3:12 PM	Volunteer Shift Time	Key:	Toilets Volunteer Parking
		Shift Start End Shift 1 12:15 PM 5:00 PM Shift 2 4:30 PM 9:00 PM Shift 3	Chute Cones & Tape Van's Path Runner's Path	



Overview Notes	
CHUTE PLACEMENT	Place chute on grass away from 7400 E and 300 S- to keep crowds off road
PARKING INSTRUCTIONS	Most parking should stay on 7400 E- Volunteer "A" Should hold flags and direct vans to park on 7400 E-
TRAFFIC CONCERNS	none
VAN/RUNNER FLOW	
PORT-A-POTTIE PLACEMENT	Toilets should be placed on street parking- doors facing toward the field
PRIVATE PROPERTY CONCERNS	
OTHER DETAIL NOTES	Exchange Bin, Binder, and cones on site should be cleaned up and stacked by Portable toilets for Course Set Up to pick up once the exchange has closed

Volunteer Duties		
A	Direct Vans to parking spot on the street. Try to keep vans from parking in the church parking lot	2
B	Manage Chute, cross team off team list	1
C	Radioing incoming runner to volunteer at chute. Help direct runner where to go	1
		4