




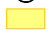

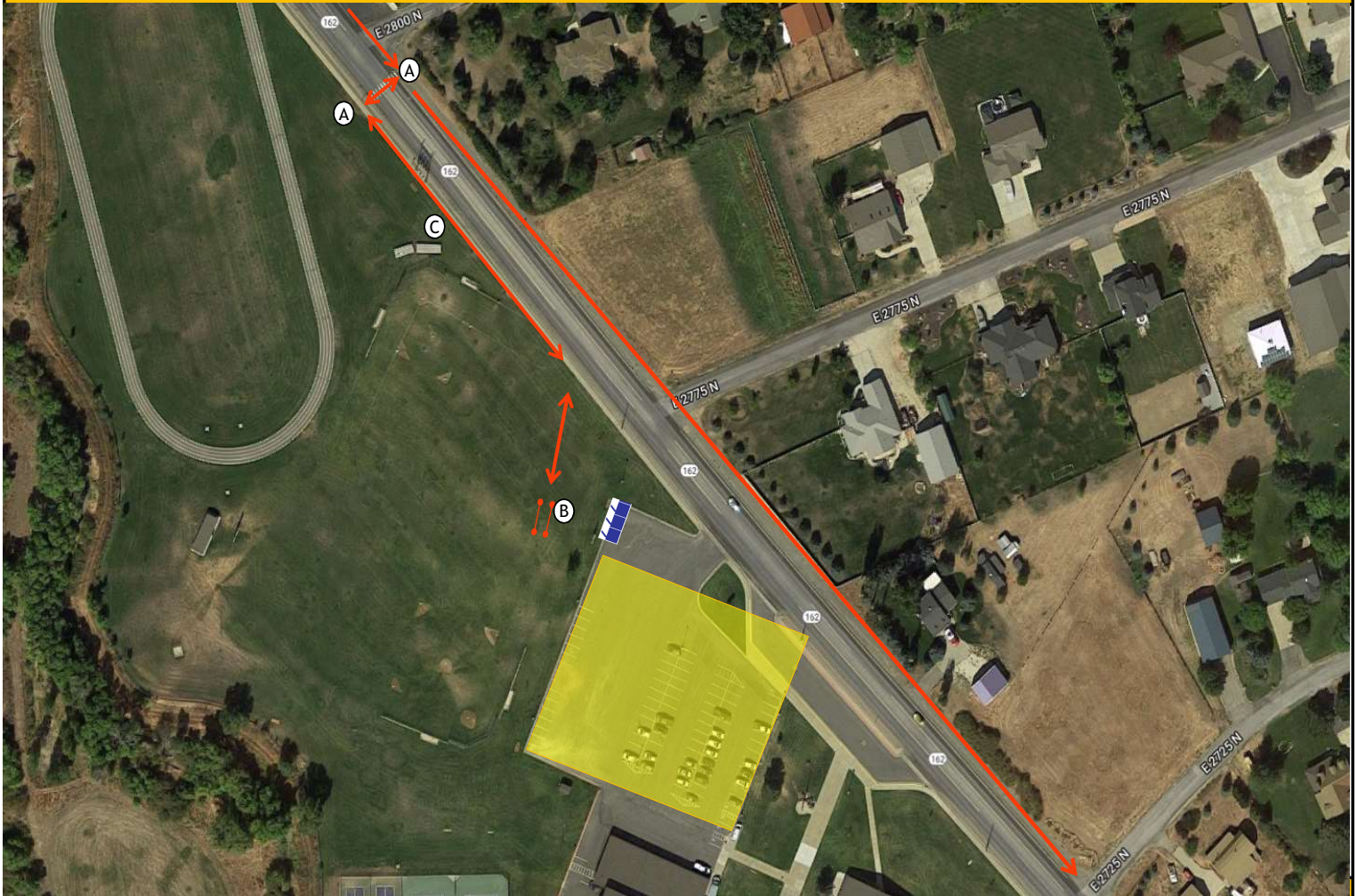


Exchange 7	School	Location: Snow Crest Jr. High School 2755 N Hwy 162, Eden, UT 84310 41.308758, -111.832167	Venue Contact:	Night Time Hours 7:45 PM - 6:30 AM
Max Parking Space Peak Parking Needs Peak Time	85 32 1:54 PM	Volunteer Shift Time	Key:	Toilets Volunteer Parking
		Shift Start End Shift 1 10:45 AM 3:30 PM Shift 2 3:00 PM 7:45 PM Shift 3	 Chute  Cones & Tape  Van's Path  Runner's Path	 Toilets  Volunteer  Parking

Overview



Overview Notes

CHUTE PLACEMENT	Place Chute on grass and far enough away from road and parking lot that crowds stay on grass
PARKING INSTRUCTIONS	Use existing parking at school
TRAFFIC CONCERNS	Runners cross road by the track- help them cross safely. Look for cars and hold runners until safe to cross
VAN/RUNNER FLOW	
PORT-A-POTTIE PLACEMENT	place in the North West corner with doors facing the field
PRIVATE PROPERTY CONCERNS	
OTHER DETAIL NOTES	Exchange Bin, Binder, and cones on site should be cleaned up and stacked by Portable toilets for Course Set Up to pick up once the exchange has closed

Volunteer Duties

A	Manage runner crossing. Hold runners till safe to cross/ 1 of the 2 volunteers here should also radio in the incoming runner number to the chute manager	2
B	Manage Chute, cross team off team list	1
C	Radioing incoming runner to volunteer at chute	1
		4