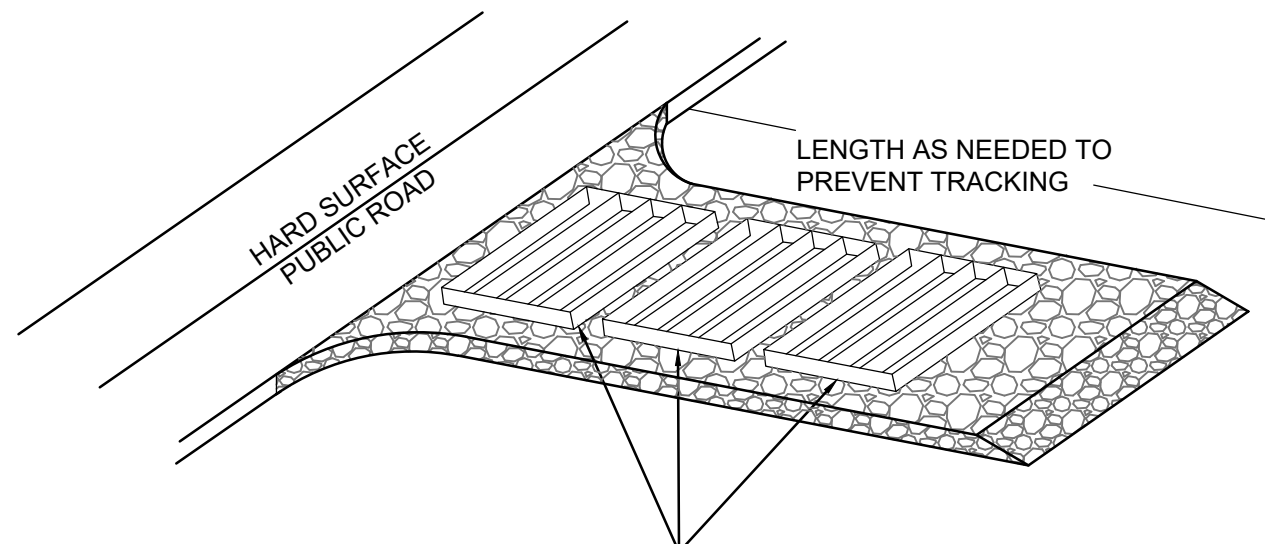
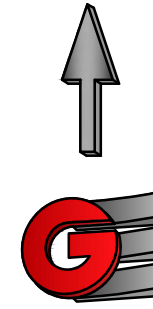


EROSION CONTROL NOTES:

1. SANDBAGS WILL BE PLACED AT DISCHARGE LOCATIONS TO CONTAIN AND DIVERT STORM WATER THROUGH THE INLET PROTECTION.
2. AN EARTHEN BERM 6" HIGH WILL BE CONSTRUCTED TO CONTAIN THE STORM WATER AND DIVERT IT TO DISCHARGE AREAS.
3. STORM WATER WILL BE DISCHARGED INTO AN EXISTING DRAINAGE SYSTEM. EXISTING LINES SHALL BE INSPECTED PRIOR TO CERTIFICATE OF OCCUPANCY AND CLEANED IF NECESSARY.
4. THE STORM WATER POLLUTION PREVENTION PLAN SHALL CONFORM TO ALL STATE DIVISION OF ENVIRONMENTAL PROTECTION REGULATIONS.



A SERIES OF STEEL PLATES (3 OR MORE) WITH RUMBLE STRIPS OR MIN. 3" COARSE AGGREGATE.

ENTRANCE STABILIZATION NOTES:

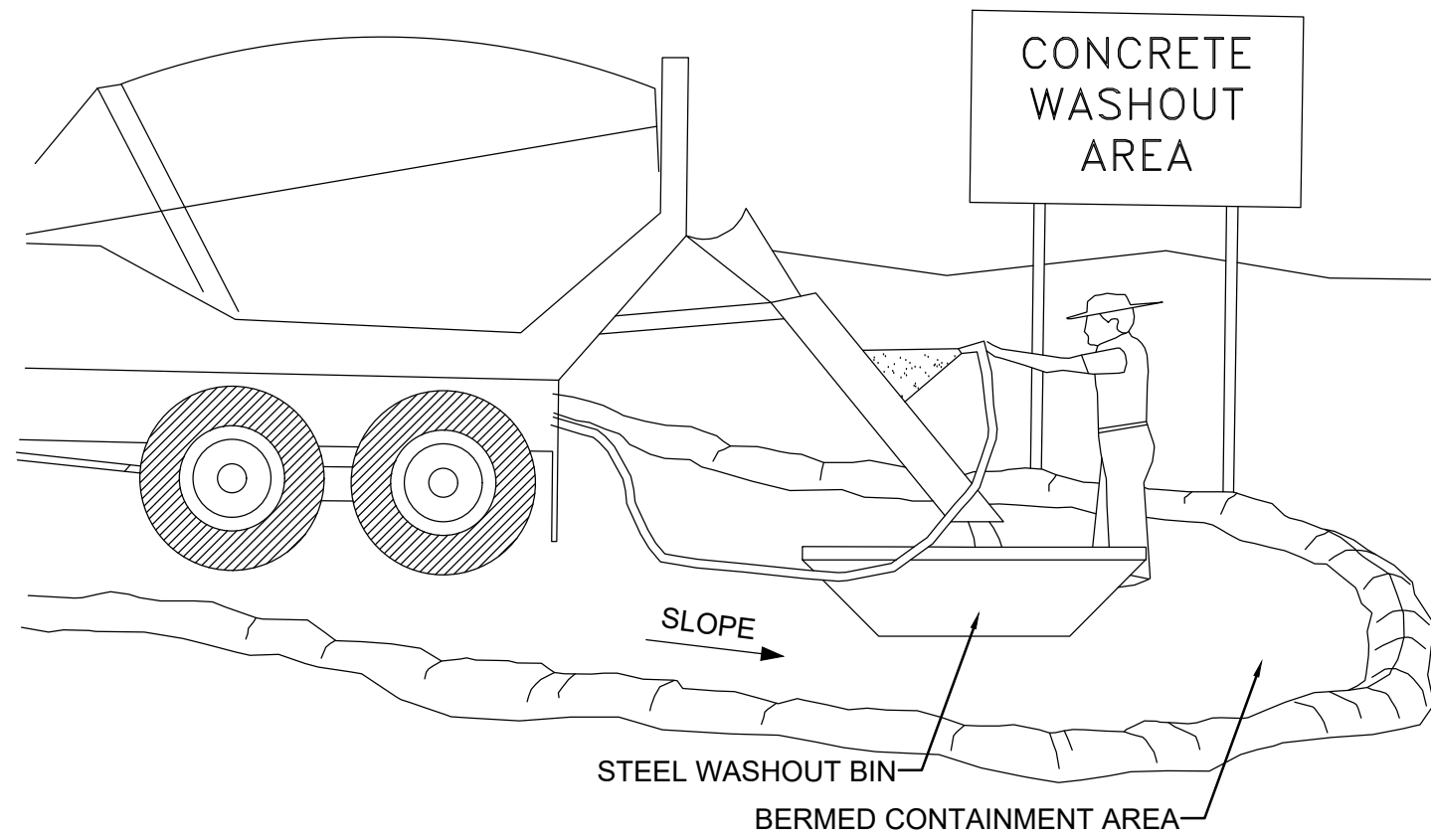
1. SEDIMENTS AND OTHER MATERIALS SHALL NOT BE TRACKED FROM THE SITE BY VEHICLE TRAFFIC. THE CONSTRUCTION ENTRANCE ROADWAYS SHALL BE STABILIZED SO AS TO PREVENT SEDIMENTS FROM BEING DEPOSITED INTO THE STORM DRAIN SYSTEMS. DEPOSITIONS MUST BE SWEEPED UP IMMEDIATELY AND MAY NOT BE WASHED DOWN BY RAIN OR OTHER MEANS INTO THE STORM DRAIN SYSTEM.
2. STABILIZED CONSTRUCTION ENTRANCE SHALL BE:
 - a. LOCATED AT ANY POINT WHERE TRAFFIC WILL BE ENTERING OR LEAVING A CONSTRUCTION SITE TO OR FROM A PUBLIC RIGHT-OF-WAY, STREET, ALLEY AND SIDEWALK OR PARKING AREA.
 - b. A SERIES OF STEEL PLATES WITH "RUMBLE STRIPS", AND/OR MIN. 3" COARSE AGGREGATE WITH LENGTH, WIDTH AND THICKNESS AS NEEDED TO ADEQUATELY PREVENT ANY TRACKING ONTO PAVED SURFACES.
3. ADDING A WASH RACK WITH A SEDIMENT TRAP LARGE ENOUGH TO COLLECT ALL WASH WATER CAN GREATLY IMPROVE EFFICIENCY.
4. ALL VEHICLES ACCESSING THE CONSTRUCTION SITE SHALL UTILIZE THE STABILIZED CONSTRUCTION ENTRANCE SITES.

STREET MAINTENANCE NOTES:

1. REMOVE ALL SEDIMENT DEPOSITED ON PAVED ROADWAYS IMMEDIATELY.
2. SWEEP PAVED AREAS THAT RECEIVE CONSTRUCTION TRAFFIC WHENEVER SEDIMENT BECOMES VISIBLE.
3. PAVEMENT WASHING WITH WATER IS PROHIBITED IF IT RESULTS IN A DISCHARGE TO THE STORM DRAIN SYSTEM.

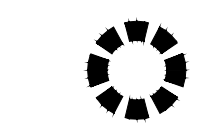
NOTE:

CONTRACTOR SHALL COMPLETE AND SUBMIT A STATE NOTICE OF INTENT (NOI) AND A STORM WATER POLLUTION PREVENTION PLAN BOOKLET



NOTES:

1. EXCESS AND WASTE CONCRETE SHALL BE DISPOSED OF OFF SITE OR AT DESIGNATED AREAS ONLY.
2. EXCESS AND WASTE CONCRETE SHALL NOT BE WASHED INTO THE STREET OR INTO A DRAINAGE SYSTEM.
3. FOR WASHOUT OF CONCRETE AND MORTAR PRODUCTS ONSITE, A DESIGNATED CONTAINMENT FACILITY OF SUFFICIENT CAPACITY TO RETAIN LIQUID AND SOLID WASTE SHALL BE PROVIDED.
4. ONSITE CONCRETE WASHOUT CONTAINMENT FACILITY SHALL BE A STEEL BIN OR APPROVED ALTERNATE.
5. SLURRY FROM CONCRETE AND ASPHALT SAW CUTTING SHALL BE VACUUMED OR CONTAINED, DRIED, PICKED UP AND DISPOSED OF PROPERLY.



INLET PROTECTION (EITHER OPTION)

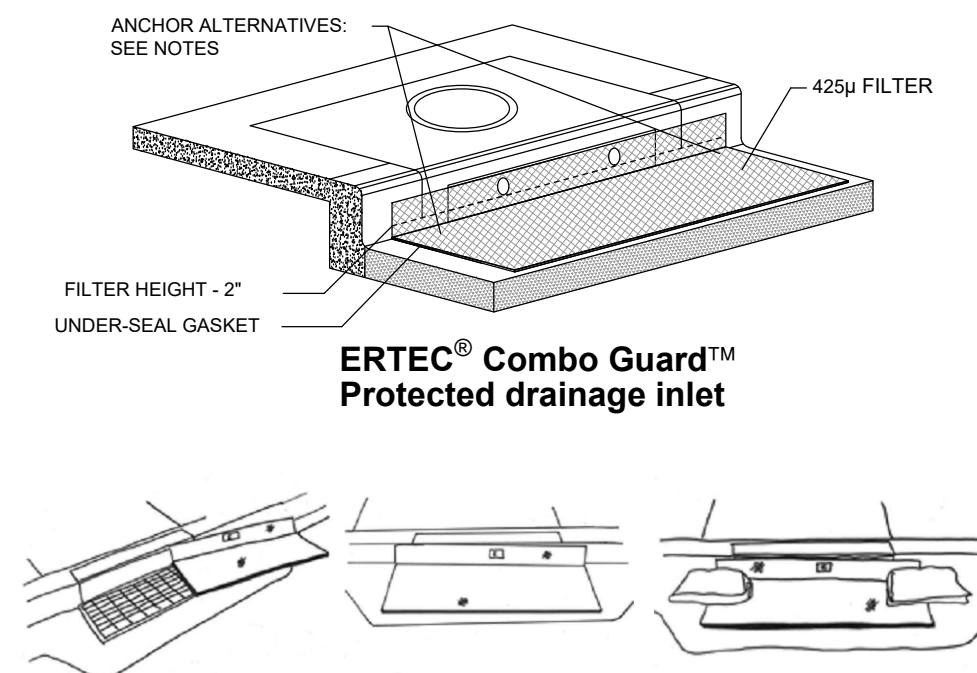


SILT FENCE

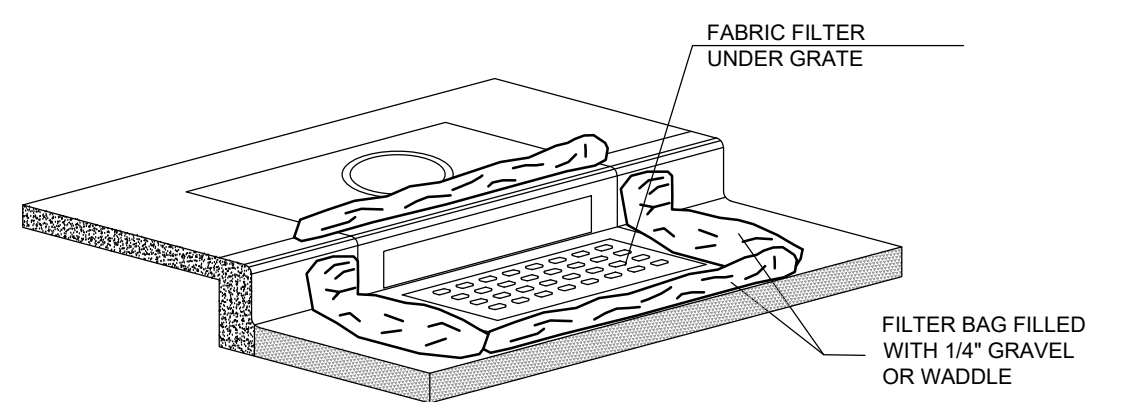


INSTALLATION NOTES

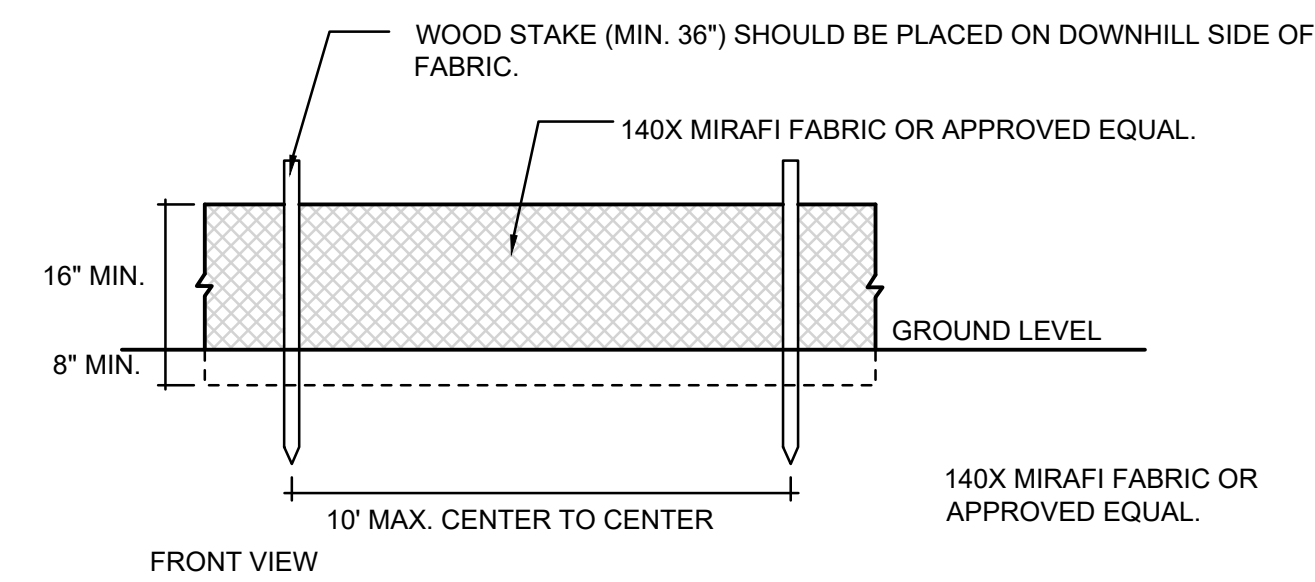
1. PLACEMENT: PLACE CG TIGHTLY AGAINST CURB OPENING AND COVER ENTIRE GRATE. CG SHOULD EXTEND AT LEAST 2 INCHES PAST GRATE TOWARDS STREET.
2. OVERLAP FOR LONG OPENINGS: OVERLAP CG UNITS AT LONGER OPENINGS.
3. ANCHOR: ANCHOR CG SO THAT WATER CANNOT FLOW BEHIND IT.
4. ALTERNATE ANCHOR METHODS: A) INSTALL GRAVEL BAGS AT EACH SIDE OF CG - HALF-ON AND HALF-OFF THE EDGES. USE HALF-FILLED GRAVEL BAGS (15 OR 20 LBS), ROUND ROCK IS RECOMMENDED. OR B) ATTACH WITH 16 GAUGE TIE-WIRE. CUT WIRE TO 18" LENGTH. AT EACH CORNER OF CG, FEED ONE END OF WIRE DOWN THROUGH CG, AROUND GRATE BAR, AND BACK UP THRU CG. ABOVE GROUND, TWIST WIRES SEVERAL TIMES, CUT-OFF EXCESS. OR C) FASTEN WITH CONCRETE ANCHORS/NAILS AT THE OUTSIDE EDGES OF CG.



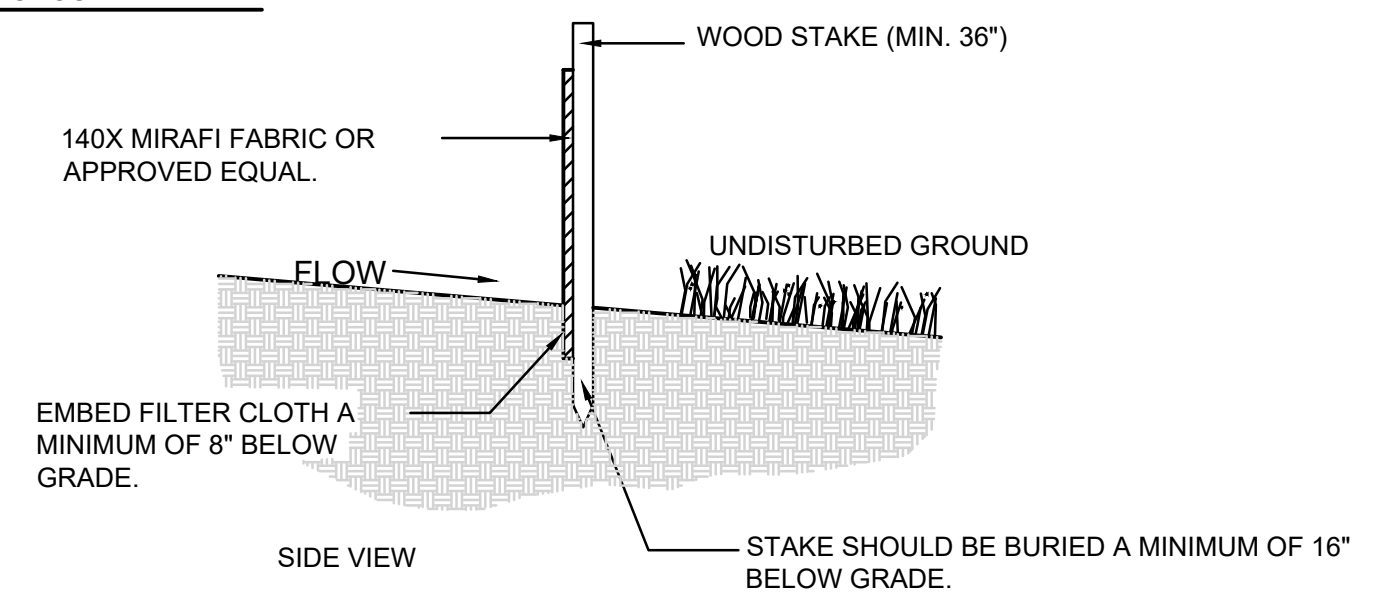
1A INLET PROTECTION - OPTION 1 Scale: NTS



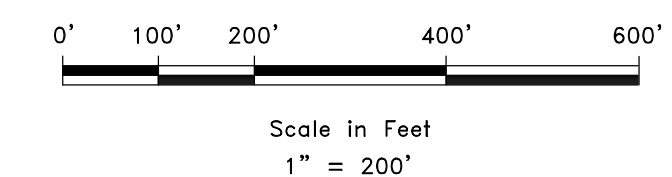
1B INLET PROTECTION - OPTION 2 Scale: NTS



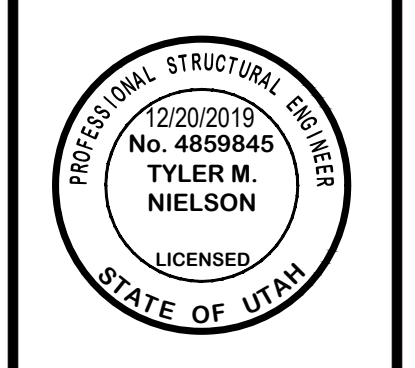
2 SILT FENCE Scale: NTS



DEVELOPER:
B & H INVESTMENT
CURTIS HYDE
110 W. JENNINGS LANE
CENTERVILLE, UT 84014
801-540-8555



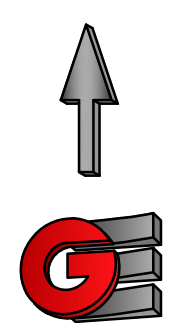
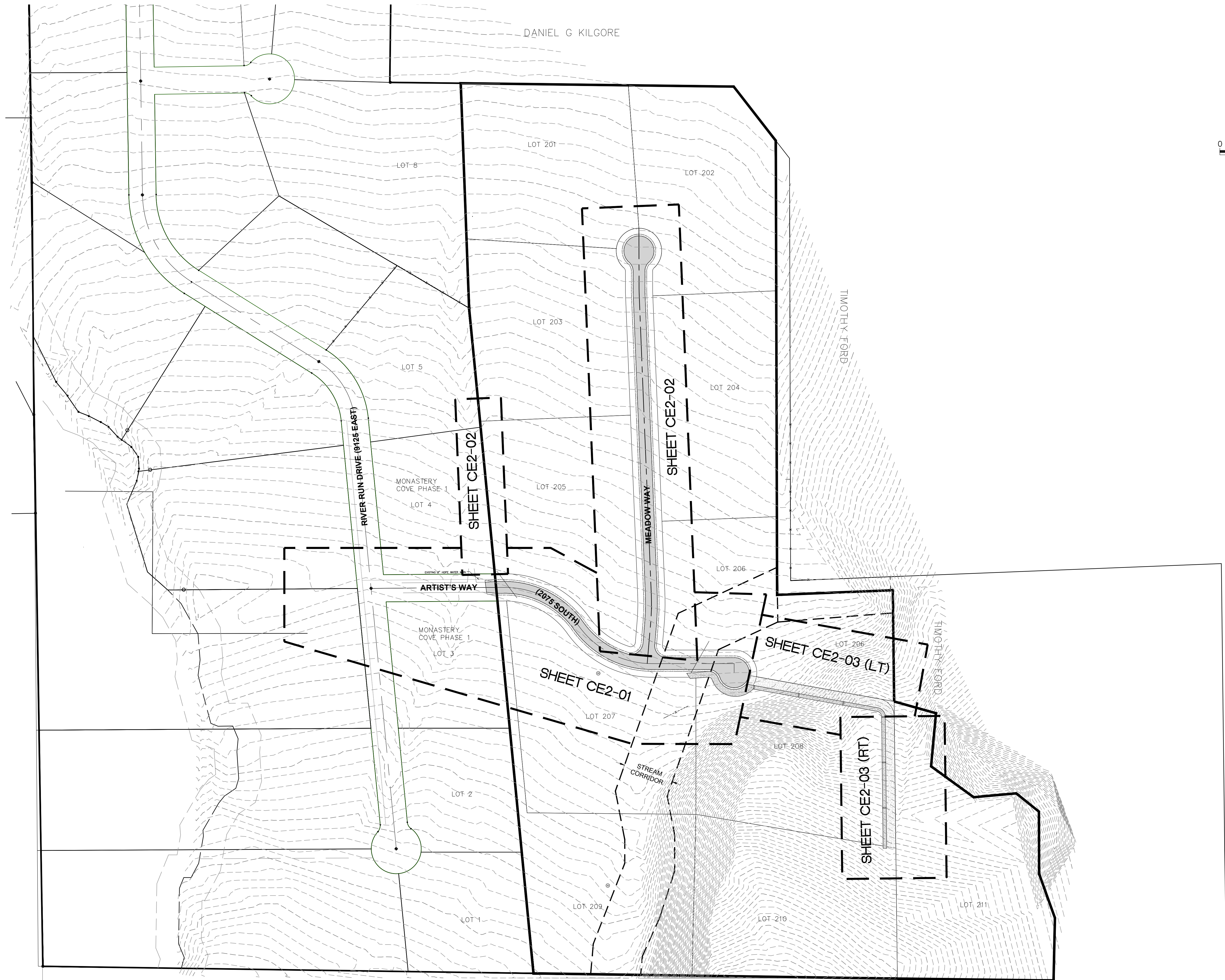
SCALE: 1" = 200'	DATE: 12/20/2019	DESIGN: TWINNIS	DRAWN: WJS	CHECKED: TIM
REVISIONS	DATE	DESCRIPTION		
DWG: B1\2019 - B&H INVESTMENT\MONASTERY COVE\DESIGN\DWG\MONASTERY COVE PH2.DWG				



SWPPP
 MONASTERY COVE PHASE 2
 HUNTSVILLE CITY, WEBER COUNTY, UTAH

GARDNER ENGINEERING
 CIVIL-LAND PLANNING
 MUNICIPAL-LAND SURVEYING
 5150 SOUTH 375 EAST OGDEN, UT
 OFFICE: 801-476-0202 FAX: 801-476-0066

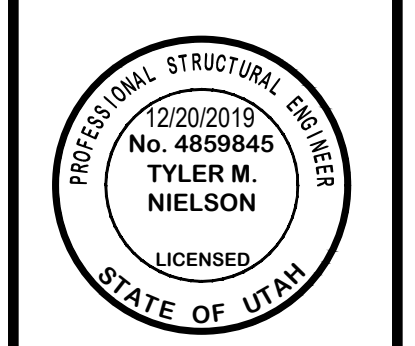
CE1-01



DEVELOPER
B & H INVESTMENT
CURTIS HYDE
110 W. JENNINGS LANE
CENTERVILLE, UT 84014
801-540-8505

SCALE	1" = 100'
DATE	12/20/2019
DESIGN	TWINLUS
DRAWN	W.S
CHECKED	T.M
REVISIONS	DESCRIPTION
DATE	

DWG: 1912019 - B&H INVESTMENT/MONASTERY COVE/DESIGN/DWG/MONASTERY COVE PHASE 1

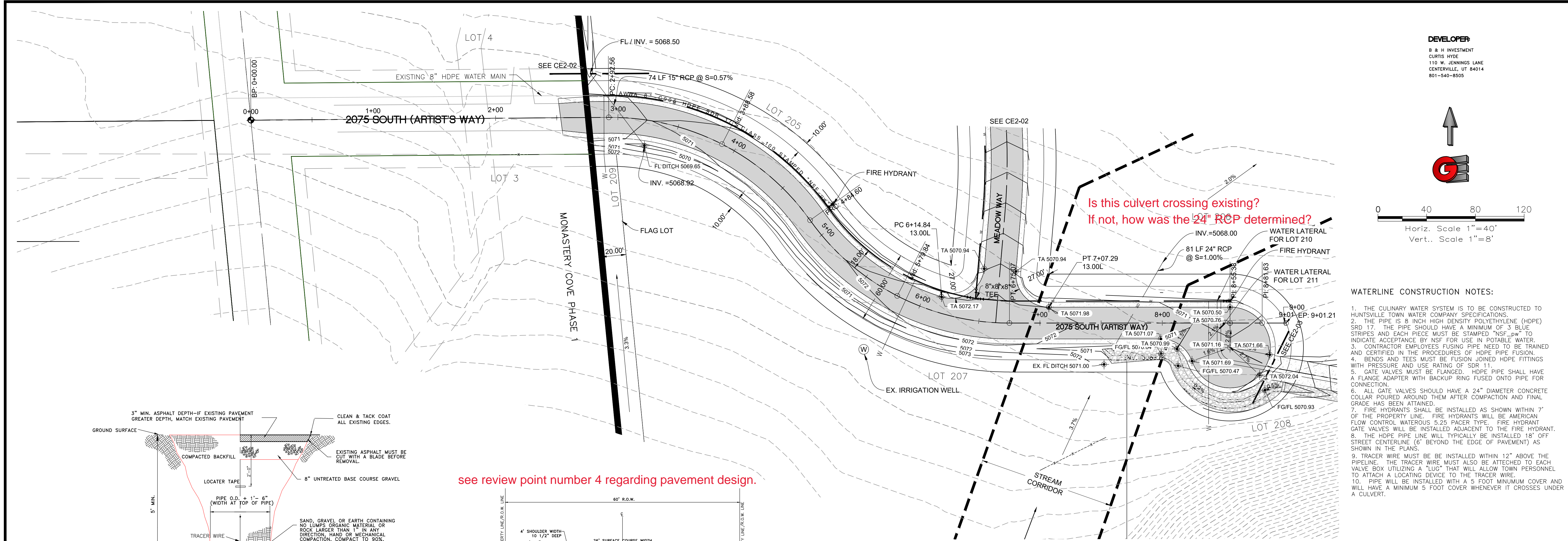


PLAN AND PROFILE KEY PLAN
MONASTERY COVE PHASE 2
HUNTSVILLE CITY, WEBER COUNTY, UTAH

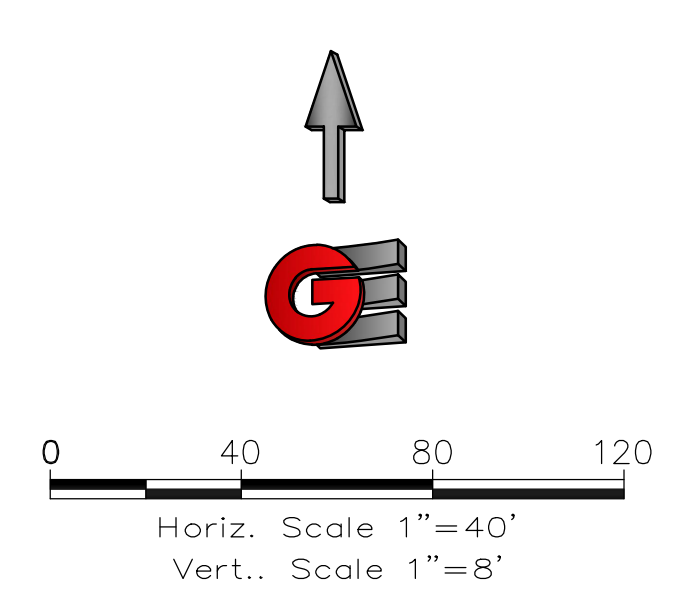
GARDNER ENGINEERING
CIVIL - LAND PLANNING
MUNICIPAL - LAND SURVEYING
5150 SOUTH 375 EAST OGDEN, UT
OFFICE: 801.476.0202 FAX: 801.476.0066

CE2-00

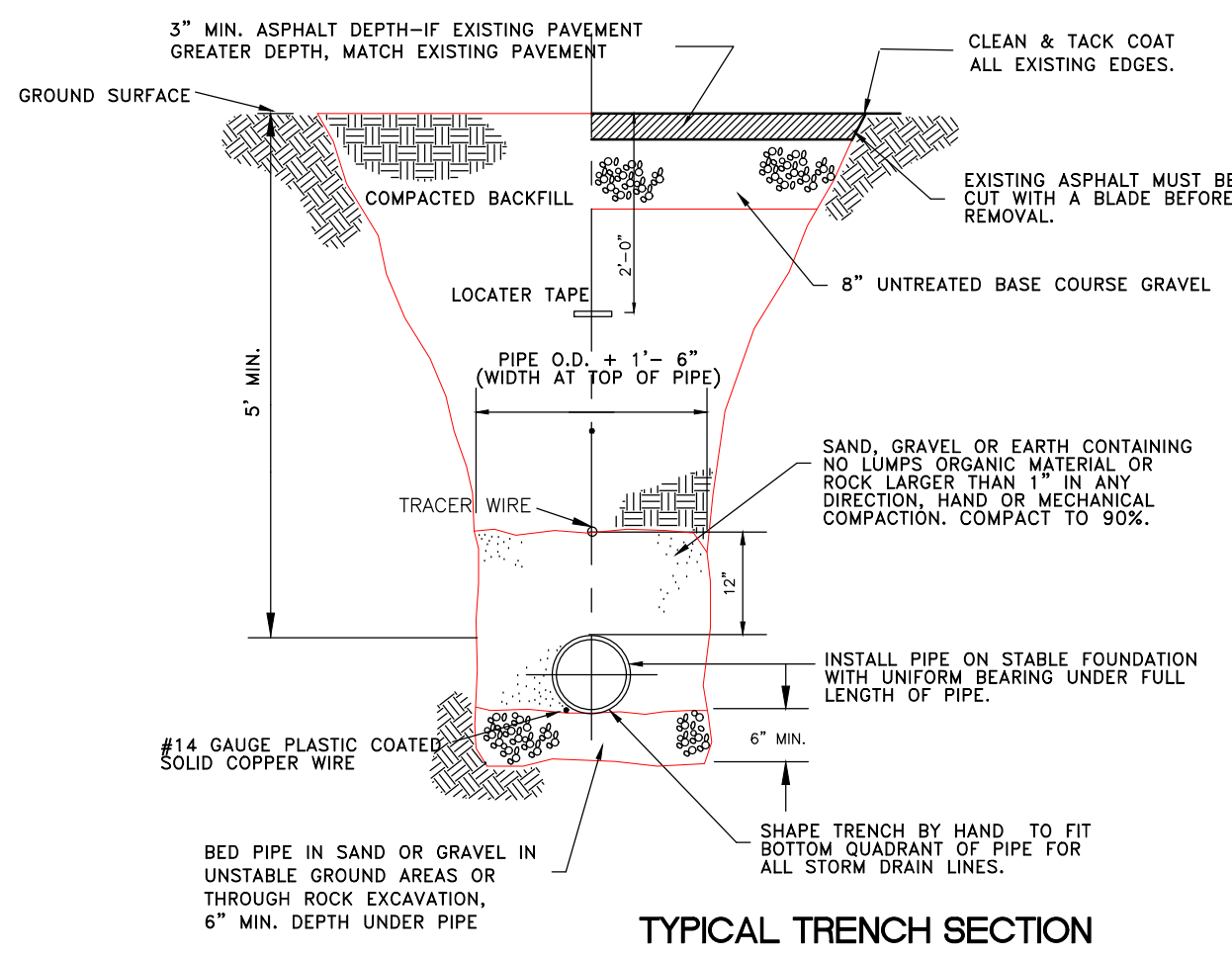
R:\2019 - B&H Investment\Monastery Cove\DESIGN\DWG\Monastery Cove PHASE 1 - PLAN AND PROFILE KEY PLAN_12/20/2019 11:22:59 AM_ARCH LUTWALD 0240X 3.500 INWPL 11



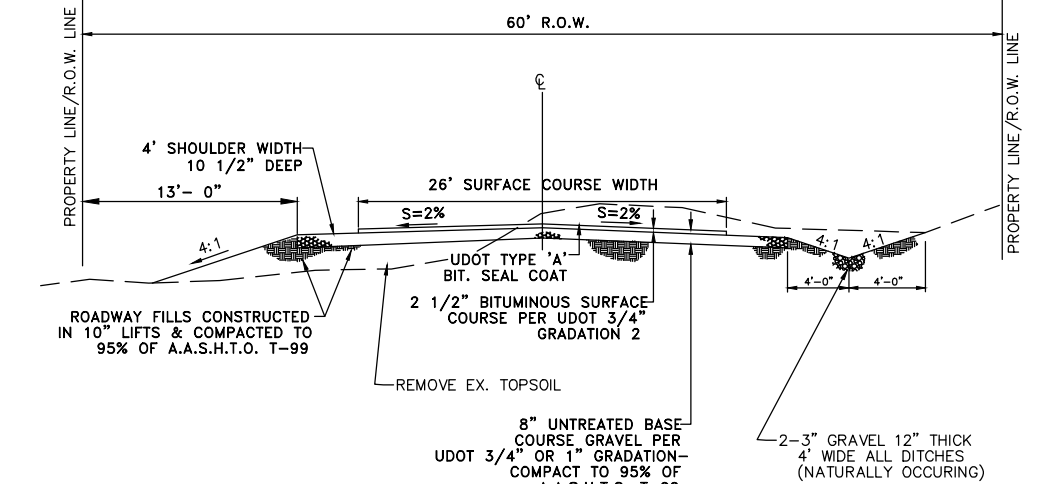
DEVELOPER:
 B & H INVESTMENT
 CURTIS HYDE
 110 W. JENNINGS LANE
 CENTERVILLE, UT 84014
 801-540-8505



- WATERLINE CONSTRUCTION NOTES:**
1. THE CULINARY WATER SYSTEM IS TO BE CONSTRUCTED TO HUNTSVILLE TOWN WATER COMPANY SPECIFICATIONS.
 2. THE PIPE IS 8 INCH HIGH DENSITY POLYETHYLENE (HDPE) SDR 17. THE PIPE SHOULD HAVE A MINIMUM OF 3 BLUE STRIPES AND EACH PIECE MUST BE STAMPED "NSF-PH" TO INDICATE ACCEPTANCE BY NSF FOR USE IN POTABLE WATER.
 3. CONTRACTOR EMPLOYEES FUSING PIPE NEED TO BE TRAINED AND CERTIFIED IN THE PROCEDURES OF HDPE PIPE FUSION.
 4. BENDS AND TEES MUST BE FUSION JOINED HDPE FITTINGS WITH PRESSURE AND USE RATING OF SDR 11.
 5. GATE VALVES MUST BE FLANGED. HDPE PIPE SHALL HAVE A FLANGE ADAPTER WITH BACKUP RING FUSED ONTO PIPE FOR CONNECTION.
 6. ALL GATE VALVES SHOULD HAVE A 24" DIAMETER CONCRETE COLLAR POURED AROUND THEM AFTER COMPACTION AND FINAL GRADE HAS BEEN ATTAINED.
 7. FIRE HYDRANTS SHALL BE INSTALLED AS SHOWN WITHIN 7' OF THE PROPERTY LINE. FIRE HYDRANTS WILL BE AMERICAN FLOW CONTROL WATEROUS 5.25 PACER TYPE. FIRE HYDRANT GATE VALVES WILL BE INSTALLED ADJACENT TO THE FIRE HYDRANT.
 8. THE HDPE PIPE LINE WILL TYPICALLY BE INSTALLED 18" OFF STREET CENTERLINE (6" BEYOND THE EDGE OF PAVEMENT) AS SHOWN IN THE PLANS.
 9. TRACER WIRE MUST BE INSTALLED WITHIN 12" ABOVE THE PIPELINE. THE TRACER WIRE MUST ALSO BE ATTACHED TO EACH VALVE BOX UTILIZING A "LUG" THAT WILL ALLOW TOWN PERSONNEL TO ATTACH A LOCATING DEVICE TO THE TRACER WIRE.
 10. PIPE WILL BE INSTALLED WITH A 5 FOOT MINIMUM COVER AND WILL HAVE A MINIMUM 5 FOOT COVER WHENEVER IT CROSSES UNDER A CULVERT.



see review point number 4 regarding pavement design.

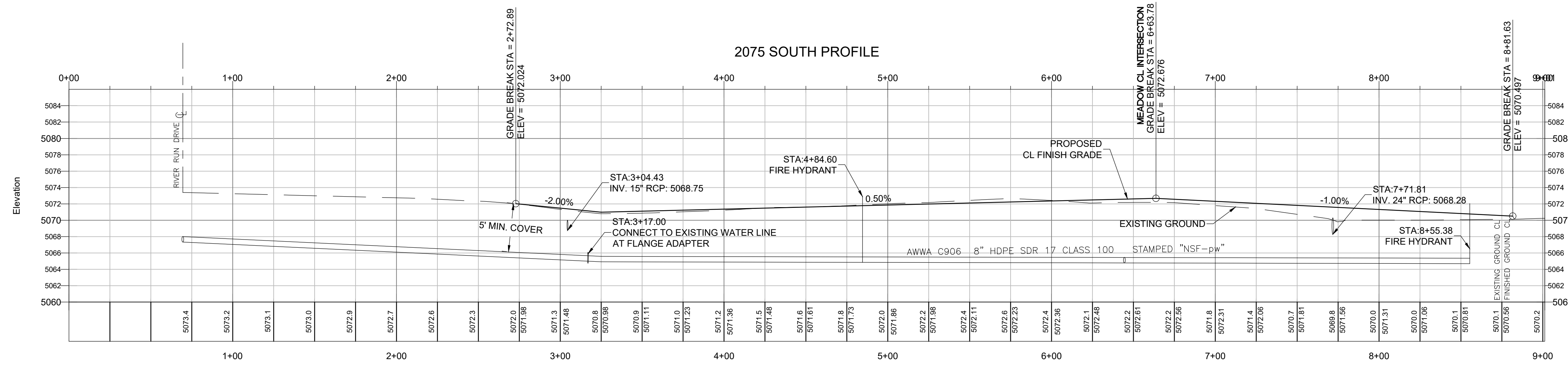


we will want to see drainage swales on both sides of the road.

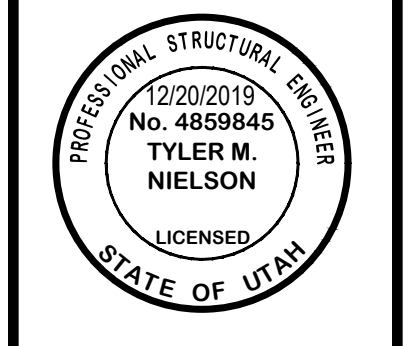
Know what's below. Call 811 before you dig.

BLUE STAKES OF UTAH
 UTILITY NOTIFICATION CENTER, INC.
 www.bluestakes.org
 1-800-662-4111

- LEGEND**
- CENTERLINE
 - PROPERTY LINE
 - EASEMENT LINE
 - GROUND CONTOURS
 - FIRE HYDRANTS
 - GATE VALVE
 - TEE
 - WATER SERVICE
 - ASPHALT PAVEMENT
 - 8" ROAD BASE
 - 12" 6-INCH DIA COBBLES



REVISIONS	DESCRIPTION
DATE	

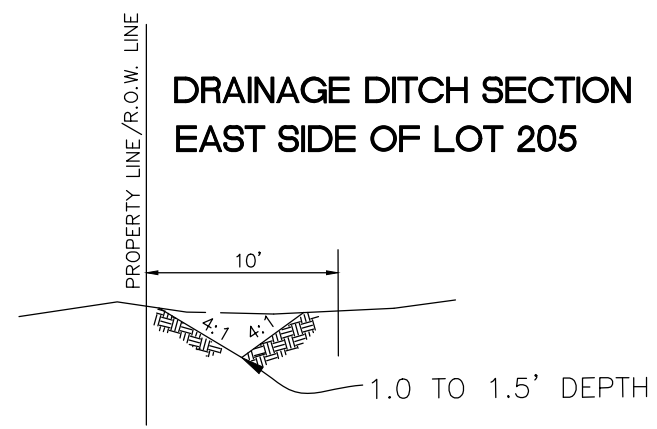


PLAN AND PROFILE
MONASTERY COVE PHASE 2
2075 SOUTH (ARTIST WAY)
 HUNTSVILLE CITY, WEBER COUNTY, UTAH

GARDNER ENGINEERING
 CIVIL-LAND PLANNING
 MUNICIPAL-LAND SURVEYING
 5150 SOUTH 375 EAST OGDEN, UT
 OFFICE: 801-476-0202 FAX: 801-476-0066

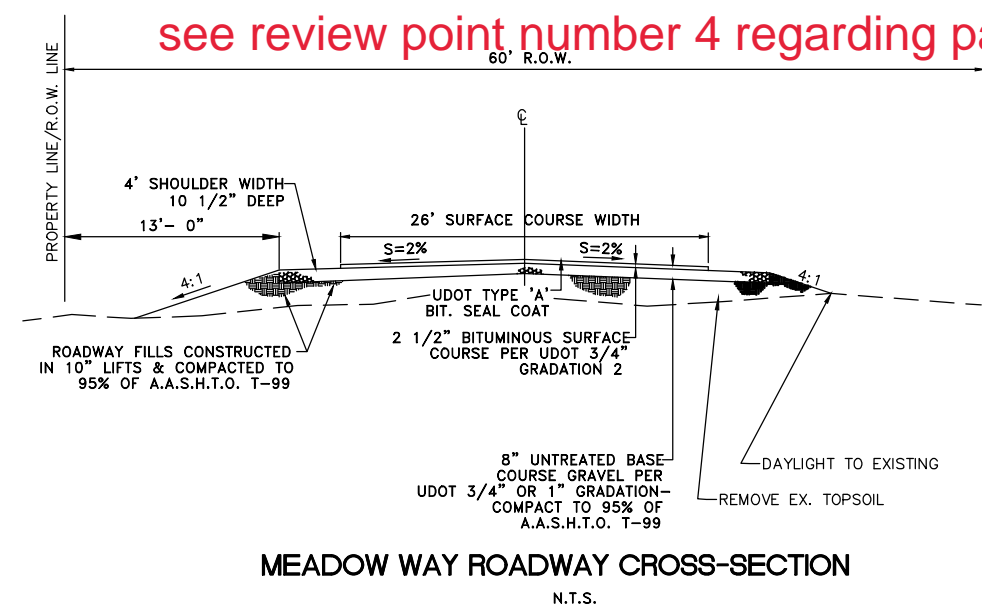
CE2-01

**DRAINAGE DITCH SECTION
EAST SIDE OF LOT 205**



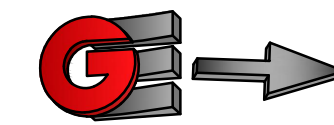
If the existing swale is to be used, does it have enough capacity for the additional water?

see review point number 4 regarding pavement design.



we will want to see drainage swales on both sides of the road.

DEVELOPER:
B & H INVESTMENT
CURTIS WIDE
110 W. JENNINGS LANE
CENTERVILLE, UT 84014
801-540-8505



0 40 80 120

Horiz. Scale 1"=40'
Vert. Scale 1"=8'

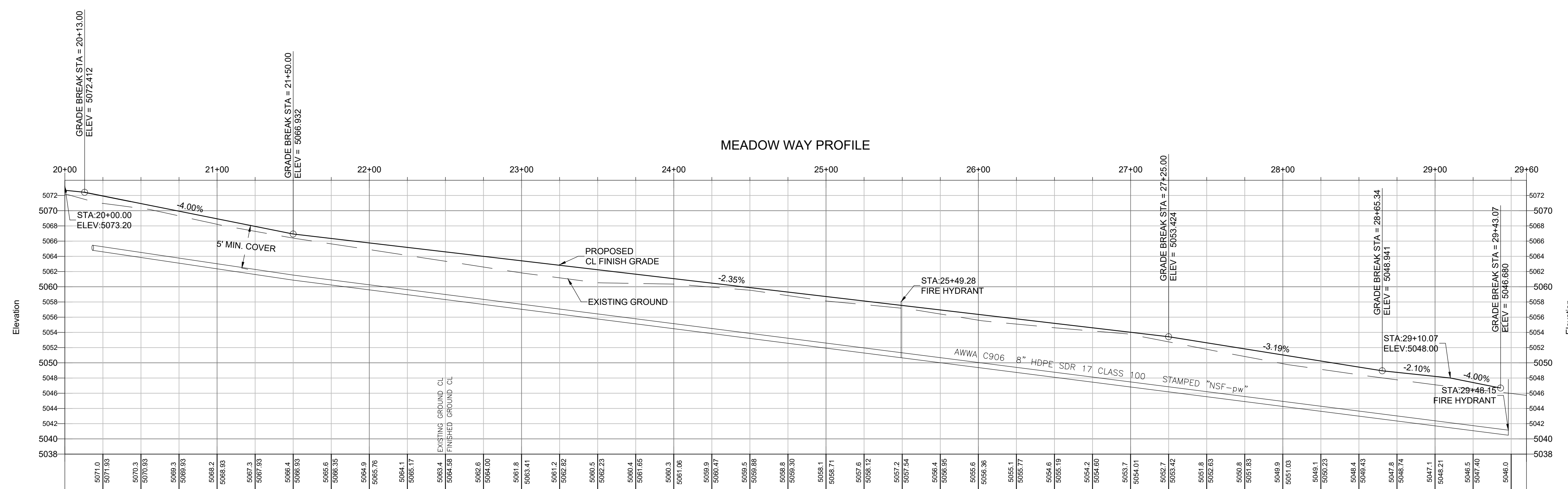
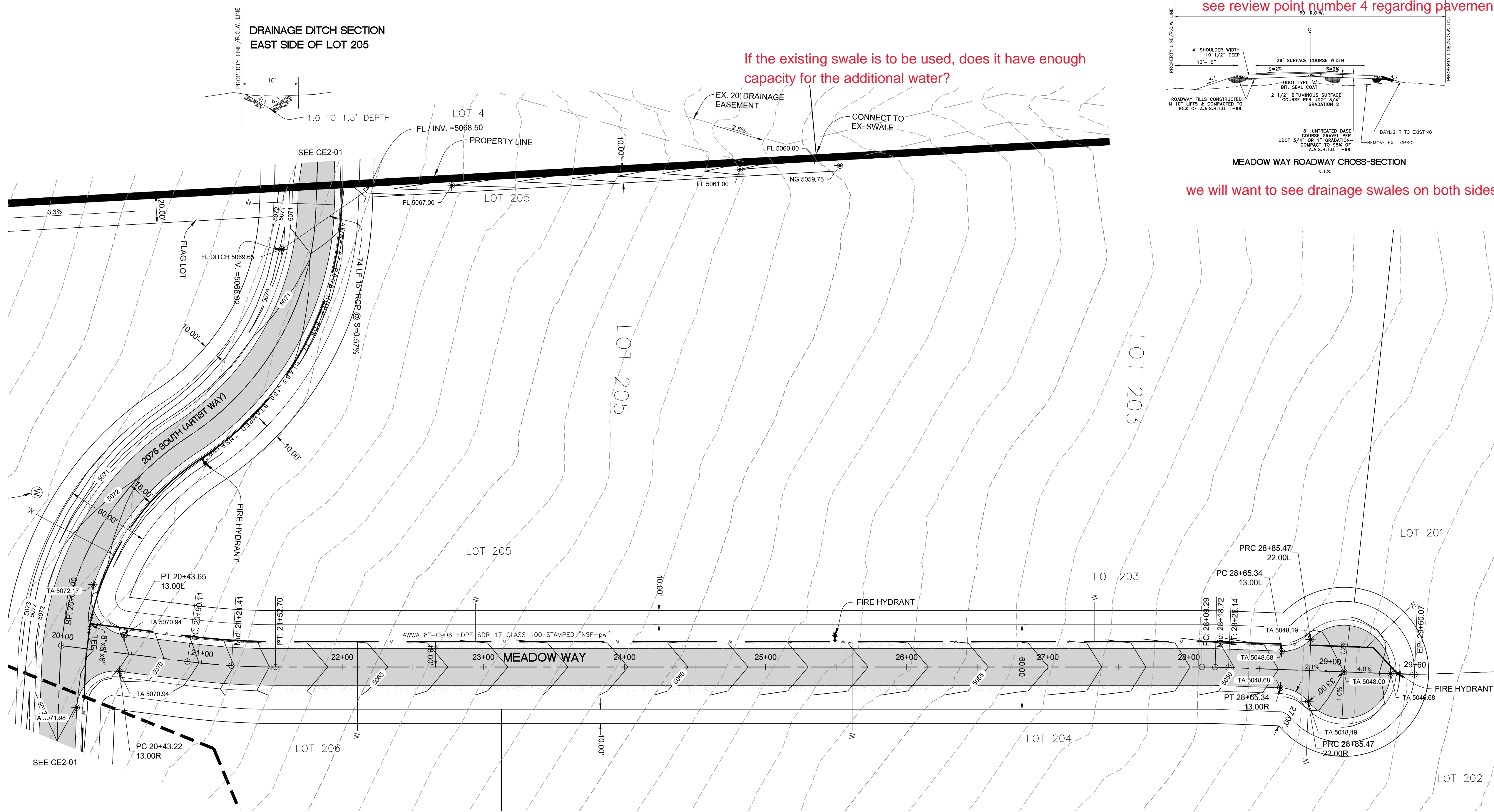
WATERLINE CONSTRUCTION NOTES:

1. THE CULINARY WATER SYSTEM IS TO BE CONSTRUCTED TO HUNTSVILLE TOWN WATER COMPANY SPECIFICATIONS.
2. THE PIPE IS 8 INCH HIGH DENSITY POLYETHYLENE (HDPE) SDR 17. THE PIPE SHOULD HAVE A MINIMUM OF 3 BLUE STRIPES AND EACH PIECE MUST BE STAMPED "NSF-pw" TO INDICATE ACCEPTANCE BY NSF FOR USE IN POTABLE WATER.
3. CONTRACTOR EMPLOYEES FUSING PIPE NEED TO BE TRAINED AND CERTIFIED IN THE PROCEDURES OF HDPE PIPE FUSION.
4. BENDS AND TEES MUST BE FUSION JOINED HDPE FITTINGS WITH PRESSURE AND USE RATING OF SDR 11.
5. GATE VALVES MUST BE FLANGED. HDPE PIPE SHALL HAVE A FLANGE ADAPTER WITH BACKUP RING FUSED ONTO PIPE FOR CONNECTION.
6. ALL GATE VALVES SHOULD HAVE A 24" DIAMETER CONCRETE COLLAR POURED AROUND THEM AFTER COMPACTION AND FINAL GRADE HAS BEEN ATTAINED.
7. FIRE HYDRANTS SHALL BE INSTALLED AS SHOWN WITHIN 7' OF THE PROPERTY LINE. FIRE HYDRANTS WILL BE AMERICAN FLOW CONTROL WATEROUS 5.25 PAGER TYPE. FIRE HYDRANT GATE VALVES WILL BE INSTALLED ADJACENT TO THE FIRE HYDRANT.
8. THE HDPE PIPE LINE WILL TYPICALLY BE INSTALLED 18" OFF STREET CENTERLINE (6' BEYOND THE EDGE OF PAVEMENT) AS SHOWN IN THE PLANS.
9. TRACER WIRE MUST BE INSTALLED WITHIN 12" ABOVE THE PIPELINE. THE TRACER WIRE MUST ALSO BE ATTACHED TO EACH VALVE BOX UTILIZING A "LUG" THAT WILL ALLOW TOWN PERSONNEL TO ATTACH A LOCATING DEVICE TO THE TRACER WIRE.
10. PIPE WILL BE INSTALLED WITH A 5 FOOT MINIMUM COVER AND WILL HAVE A MINIMUM 5 FOOT COVER WHENEVER IT CROSSES UNDER A CULVERT.

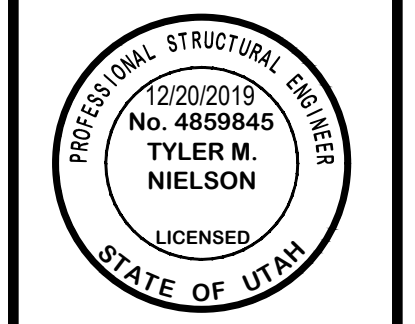
Know what's below. 811
Call 811 before you dig.
BLUE STAKES OF UTAH
UTILITY NOTIFICATION CENTER, INC.
www.bluestakes.org
1-800-662-4111

LEGEND

- CENTERLINE
- PROPERTY LINE
- EASEMENT LINE
- 5012 — GROUND CONTOURS
- ★ FIRE HYDRANTS
- ⊕ GATE VALVE
- ⊕ TEE
- W — WATER SERVICE
- ASPHALT PAVEMENT
- 8" ROAD BASE
- 12" 6-INCH DIA COBBLES



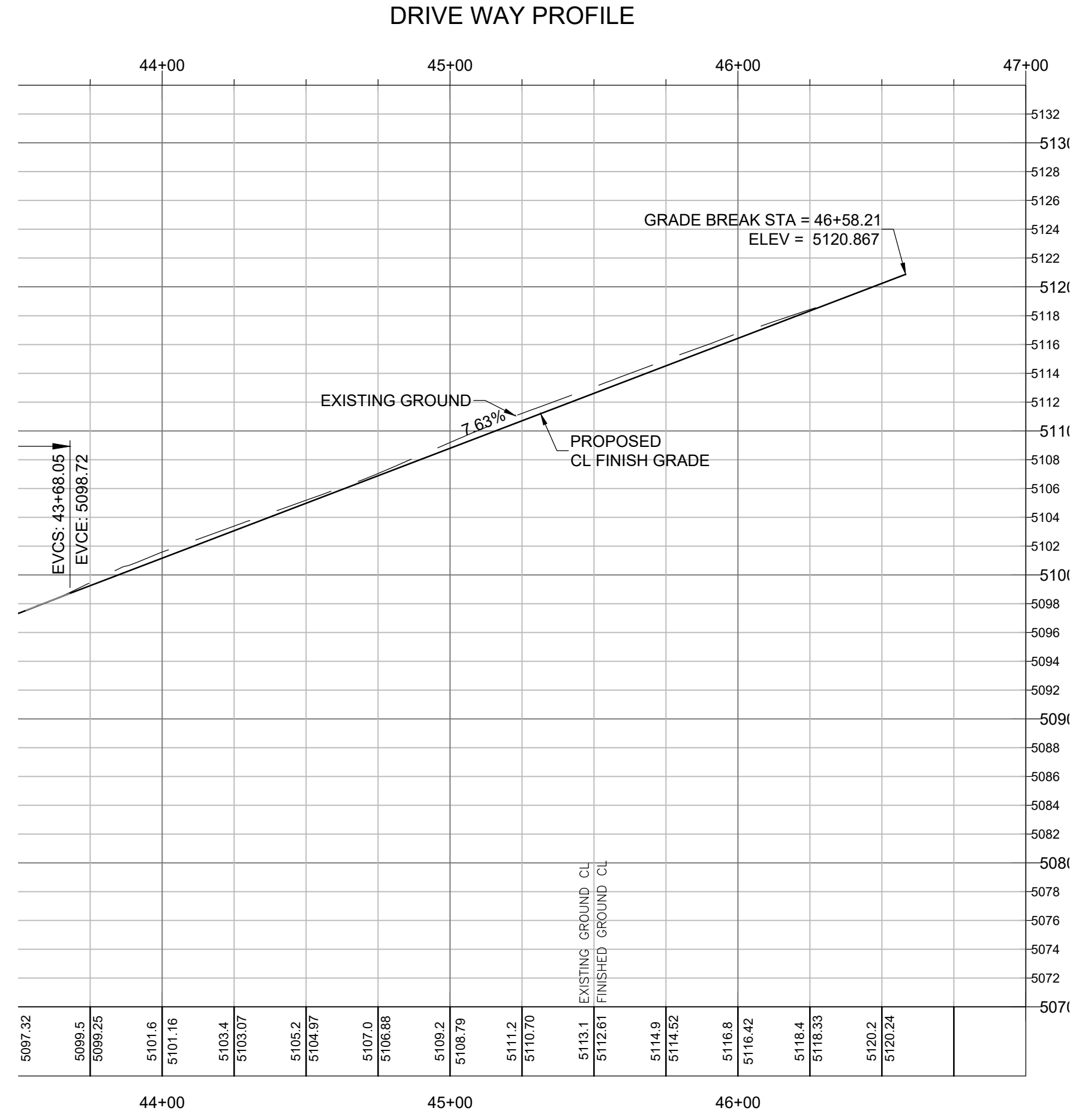
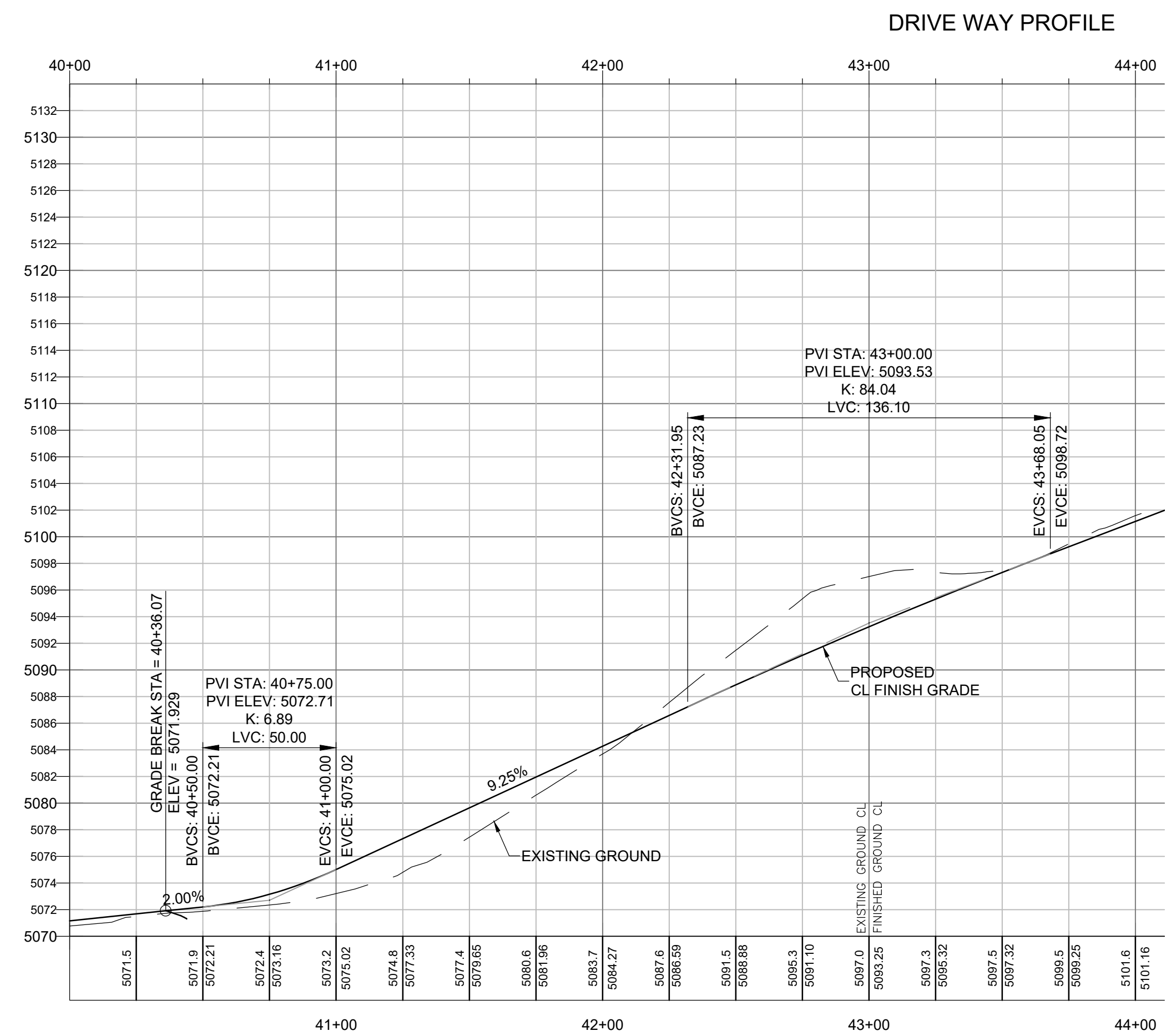
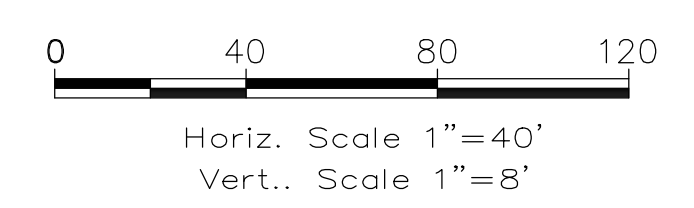
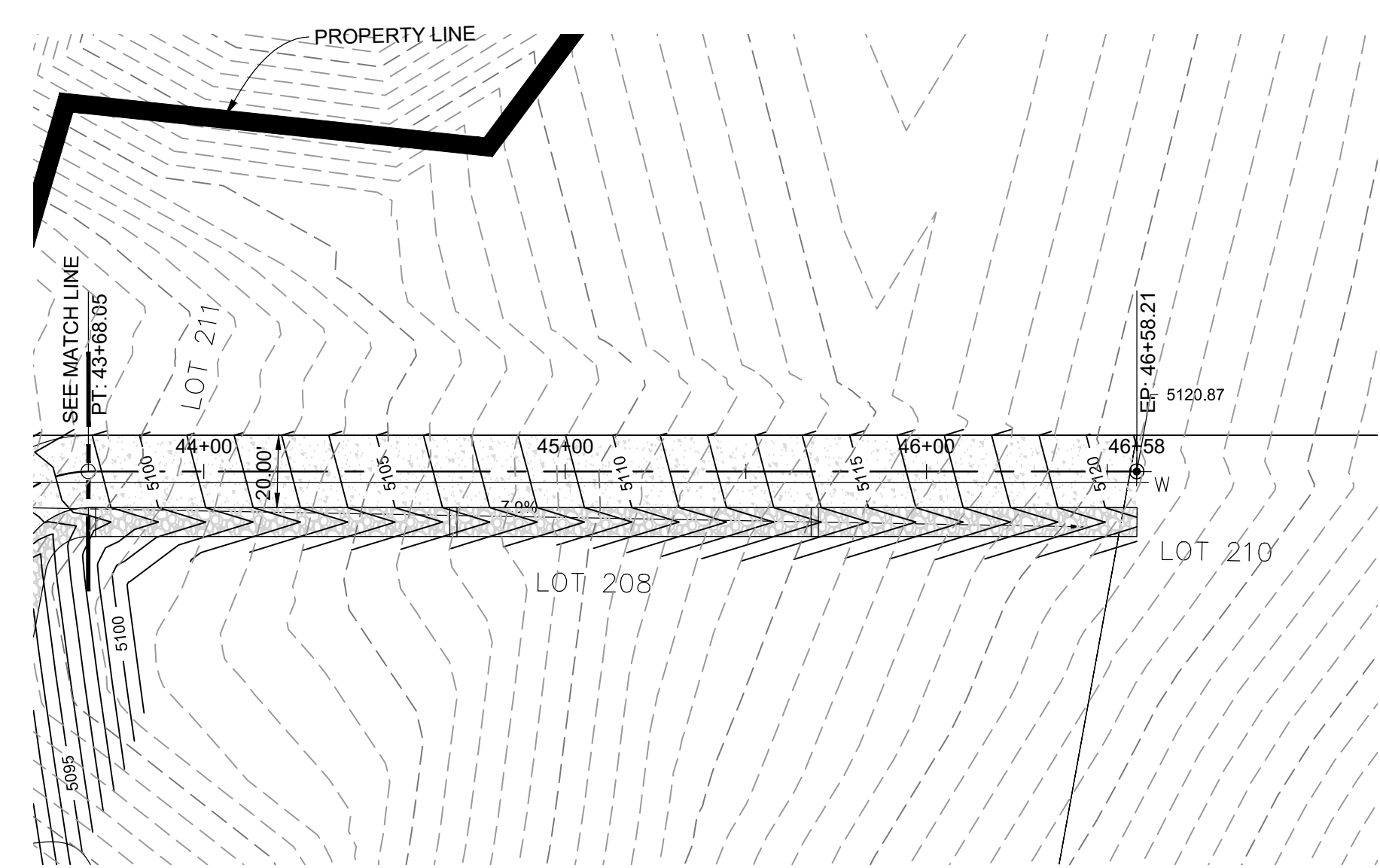
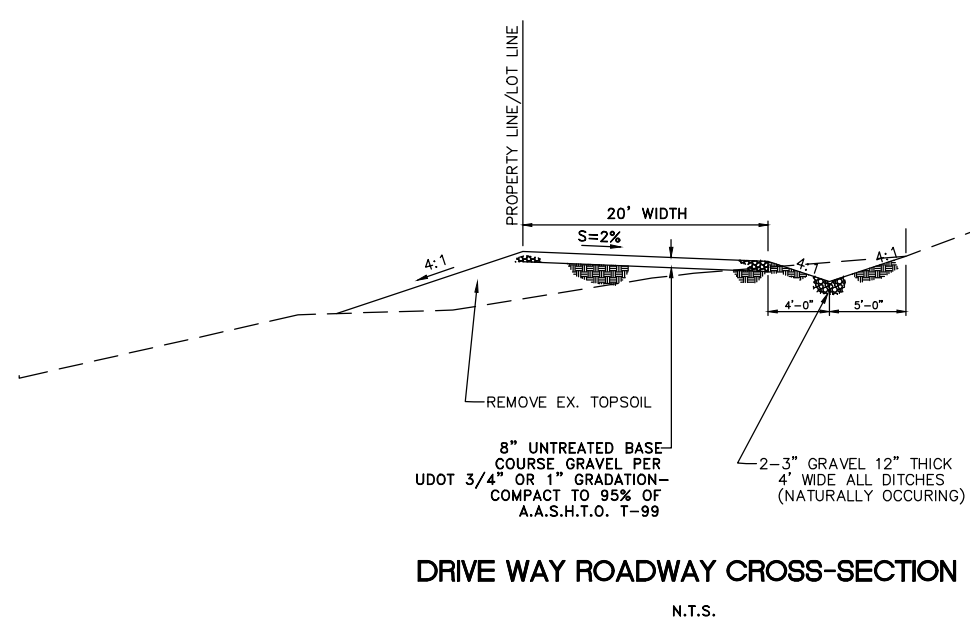
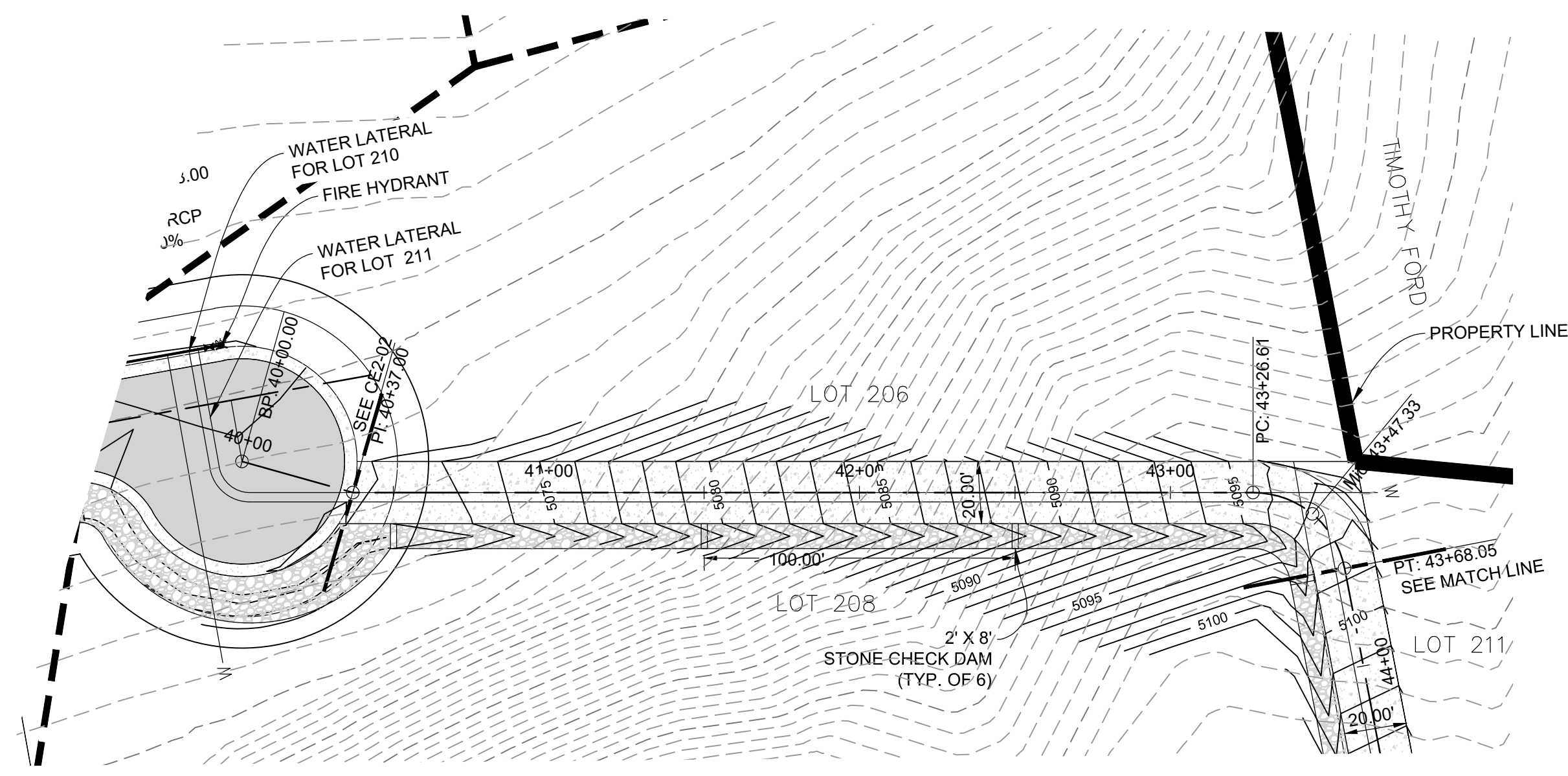
SCALE: 1"=40'	DATE: 12/20/2019	DESIGN: TWINNIS	DRAWN: W.S.	CHECKED: TIM
REVISIONS	DESCRIPTION			
DATE				



PLAN AND PROFILE
MONASTERY COVE PHASE 2
2075 SOUTH (ARTIST WAY)
HUNTSVILLE CITY, WEBER COUNTY, UTAH

GARDNER ENGINEERING
CIVIL-LAND PLANNING
MUNICIPAL-LAND SURVEYING
5150 SOUTH 375 EAST OGDEN, UT
OFFICE: 801-476-0202 FAX: 801-476-0066

CE2-02



LEGEND

- CENTERLINE
- PROPERTY LINE
- EASEMENT LINE
- GROUND CONTOURS
- FIRE HYDRANTS
- GATE VALVE
- TEE
- WATER SERVICE
- ASPHALT PAVEMENT
- 8" ROAD BASE
- 12" 6-INCH DIA COBBLES

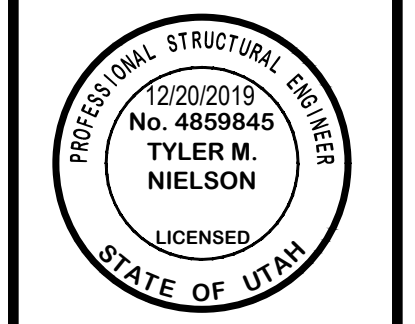
SCALE: 1"=40'

DATE	12/20/2019
DESIGN	TWINNIS
DRAWN	WJS
CHECKED	TJN

REVISIONS

DATE	DESCRIPTION

DWG: 1912018 - 884 INVESTMENT/MONASTERY COVE/DESIGN/MONASTERY COVE PH2.DWG



DEVELOPER:
B & H INVESTMENT
CURTIS HYDE
110 W. JENNINGS LANE
CENTERTVILLE, UT 84014
801-540-8505

Know what's below. **811**
Call 811 before you dig.
BLUE STAKES OF UTAH
UTILITY NOTIFICATION CENTER, INC.
www.bluestakes.org
1-800-662-4111

PLAN AND PROFILE
MONASTERY COVE PHASE 2
DRIVE WAY
HUNTSVILLE CITY, WEBER COUNTY, UTAH

GARDNER ENGINEERING
CIVIL-LAND PLANNING
MUNICIPAL-LAND SURVEYING
5150 SOUTH 375 EAST OGDEN, UT
OFFICE: 801-476-0202 FAX: 801-476-0066