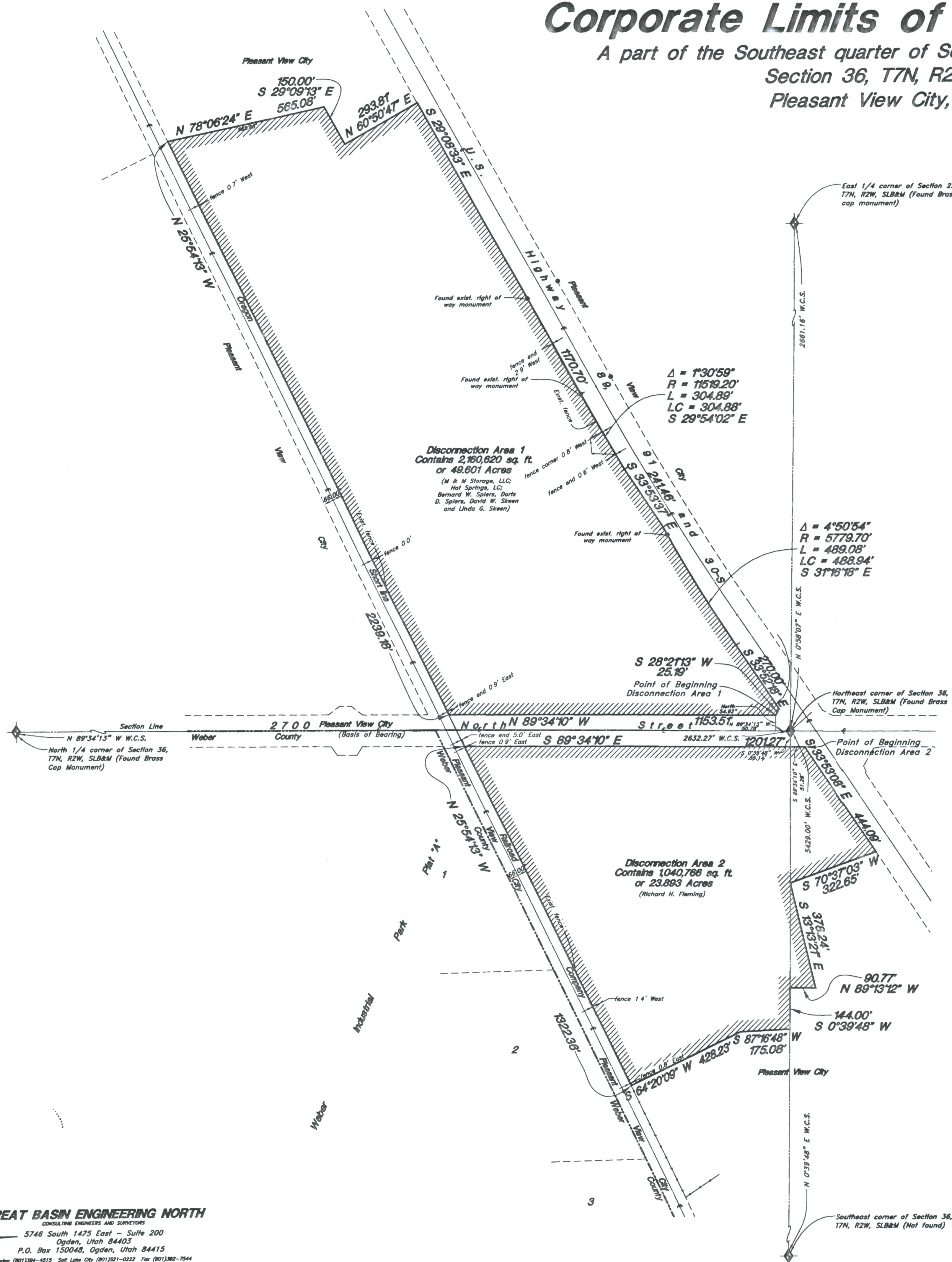


Amended Disconnection Plat from Corporate Limits of Pleasant View City

A part of the Southeast quarter of Section 25 and the Northeast quarter of Section 36, T7N, R2W, SLB&M, U.S. Survey
Pleasant View City, Weber County, Utah



Scale 1" = 200'
Graphic Scale



NARRATIVE

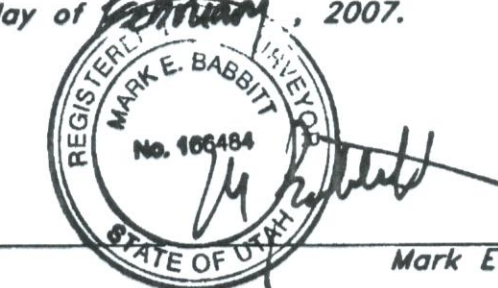
This Amended Disconnection plat has been prepared at the request of Pleasant View City to correct a previously recorded Disconnection Plat (which "Disconnection Plat" was recorded in the Weber County Recorder's Office on July 7, 2004, as Entry No. 2042110, in Book 60 at Page 11). The Disconnection Plat did not reflect the correct property to be disconnected from Pleasant View City as contained in Judge Ernie Jones' Order and Decree of Disconnection, dated April 9, 2004, in Civil Case Number 030902464, in the Second District Court of Weber County, Utah. The Disconnection Plat incorrectly removed property from Pleasant View City that was not part of Judge Jones' Order and Decree of Disconnection because the Disconnection Plat included the Oregon Short Line Railroad Company Right of Way and included 2700 North Street, between the Oregon Short Line Railroad Company right of way and State Road Highway 89. This Amended Disconnection Plat is being recorded to correct the Disconnection Plat and shows (as indicated in the Legend below) the property disconnected from Pleasant View as contained in Judge Jones' Order and Decree of Disconnection. The disconnection property shall be a part of Weber County. The Oregon Short Line Railroad Company right of way and 2700 North Street remain within the Corporate Limits of Pleasant View City.

Brass cap monuments were found at the North 1/4 corner and the Northeast corner of Section 36, T7N, R2W. A line bearing N 89°34'13" W between these two monuments was used as the basis of bearing. A mathematical discrepancy was found in the legal description on the original Disconnection Plat of record. The boundary description Section tie dimension of North 0°58'07" East 19.36 feet along the Section line from the Northeast corner of Section 36, which placed the property further South than were it should have been. The correct dimension should have been North 0°58'07" East 19.85 feet along the Section line.

SURVEYOR'S CERTIFICATION

I, Mark E. Babbitt, do hereby certify that I am a Registered Professional Land Surveyor in the State of Utah, and that I hold Certificate No. 166484 in accordance with Title 58 Chapter 22, Professional Engineers and Land Surveyors Licensing Act. I also do hereby certify that this Amended Disconnection Plat from the Corporate Limits of Pleasant View City in Weber County, Utah has been correctly drawn to the designated scale and is a true and correct representation of the following description of lands included in said subdivision, based on data compiled from records in the Weber County Recorder's Office, and of a survey made on the ground in accordance with Section 17-23-17. Monuments have been set as depicted on this drawing.

Signed this 1st day of September, 2007.



166484
License No.

Mark E. Babbitt

BOUNDARY DESCRIPTION

Disconnection Area 1

A part of the Southeast quarter of Section 25 and the Northeast quarter of Section 36, Township 7 North, Range 2 West, Salt Lake Base and Meridian, U.S. Survey:
Beginning at a point on the North right of way line of the widening of the existing Highway State Route 134 (2700 North Street) known as Project No. SP-0134 (2) 11, which is 50.78 feet North 89°34'13" West along the Section line and 54.92 feet North from the Northeast corner of said Section 36; running thence North 89°34'10" West 1153.51 feet along said North right of way line to the Easterly right of way line of the Oregon Short Line Railroad Company (O.S.L.R.R. Co.); thence North 25°54'13" West 2239.18 feet along said Easterly right of way line; thence North 78°06'24" East 565.08 feet; thence South 29°09'13" East 150.00 feet; thence North 60°50'47" East 293.81 feet to the Westerly right of way line of U.S. Highway 89, 91 and 30-S; thence (6) Six courses along said Westerly right of way line as follows: South 29°08'33" East 1170.70 feet; Southeasterly along the arc of a 11519.20 foot radius curve to the left a distance of 304.89 feet (Central Angle equals 1°30'59" and Long Chord bears South 29°54'02" East 304.88 feet); South 33°53'37" East 241.46 feet; Southeasterly along the arc of a 5779.70 foot radius curve to the left a distance of 489.08 feet (Central Angle equals 4°50'54" and Long Chord bears South 31°16'18" East 488.94 feet); South 33°52'18" East 270.00 feet and South 28°21'13" West 25.19 feet to the point of beginning.

Contains: 2,160,620 sq. ft.
or 49.601 acres

Disconnection Area 2

A part of the Northeast quarter of Section 36, Township 7 North, Range 2 West and a part of the Northwest quarter of Section 31, Township 7 North, Range 1 West, Salt Lake Base and Meridian, U.S. Survey:
Beginning at the intersection of the Westerly right of way line of U.S. Highway 89, 91 & 30-S and the South right of way line of the widening of the existing Highway State Route 134 (2700 North Street) known as Project No. SP-0134 (2) 11, which is 55.14 feet South 0°39'48" West along the Section line and 51.26 feet South 89°34'10" East along said South right of way line from the Northeast corner of said Section 36; running thence South 33°53'08" East 444.09 feet along said Westerly right of way line; thence South 70°37'03" West 322.65 feet to the East line of the Northeast quarter of said Section 36; thence South 13°13'21" East 378.24 feet; thence North 89°13'12" West 90.77 feet to said East line; thence South 0°39'48" West 144.00 feet along said East line; thence South 87°16'48" West 175.08 feet; thence South 64°20'09" West 428.23 feet to the Easterly right of way line of the Oregon Short Line Railroad Company (O.S.L.R.R. Co.); thence North 25°54'13" West 1322.36 feet along said Easterly right of way line to the South right of way line of said 2700 North Street; thence South 89°34'10" East 1201.27 feet along said South right of way line to the point of beginning.

Contains: 1,040,766 sq. ft.
or 23.893 acres

Legend



WEBER COUNTY SURVEYOR

I hereby certify that the Weber County Surveyor's office has reviewed this amended disconnection plat for mathematical correctness, section corner data, and for harmony with lines and monuments on record in county offices. The approval of this plat by the Weber County Surveyor does not relieve the Licensed Land Surveyor who executed this plat from the responsibilities and/or liabilities associated with the survey.
Signed this 5th day of September, 2007.



GREAT BASIN ENGINEERING NORTH
CONSULTING ENGINEERS AND SURVEYORS
5746 South 1475 East - Suite 200
Ogden, Utah 84403
P.O. Box 150046, Ogden, Utah 84415
Ogden (801)384-4515 Salt Lake City (801)521-0222 Fax (801)382-7544

WEBER COUNTY RECORDER
ENTRY NO. 2240088 FEE PAID
NO FEE FILED FOR RECORD AND
RECORDED 5-FEB-2007 AT
12:03 IN BOOK 165 OF OFFICIAL
RECORDS, PAGE 51 RECORDED
FOR PLEASANT VIEW CITY
FENESE D. POWLEY
WEBER COUNTY RECORDER
BY: *Karen Thompson*
DEPUTY