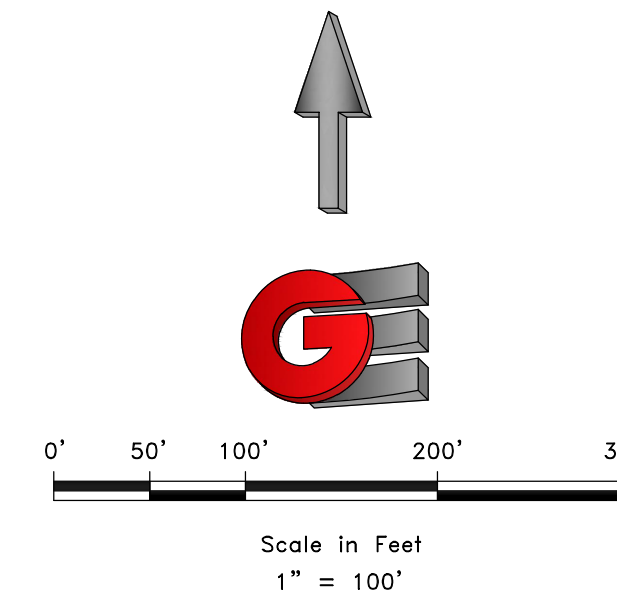
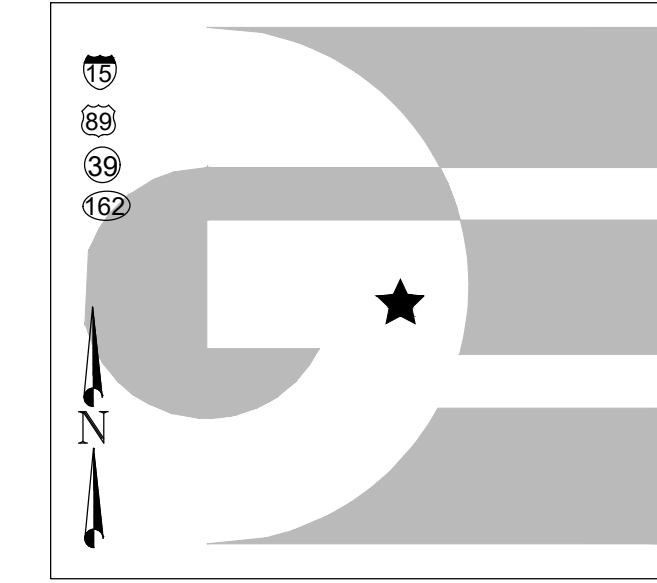


# MONASTERY COVE PHASE 2

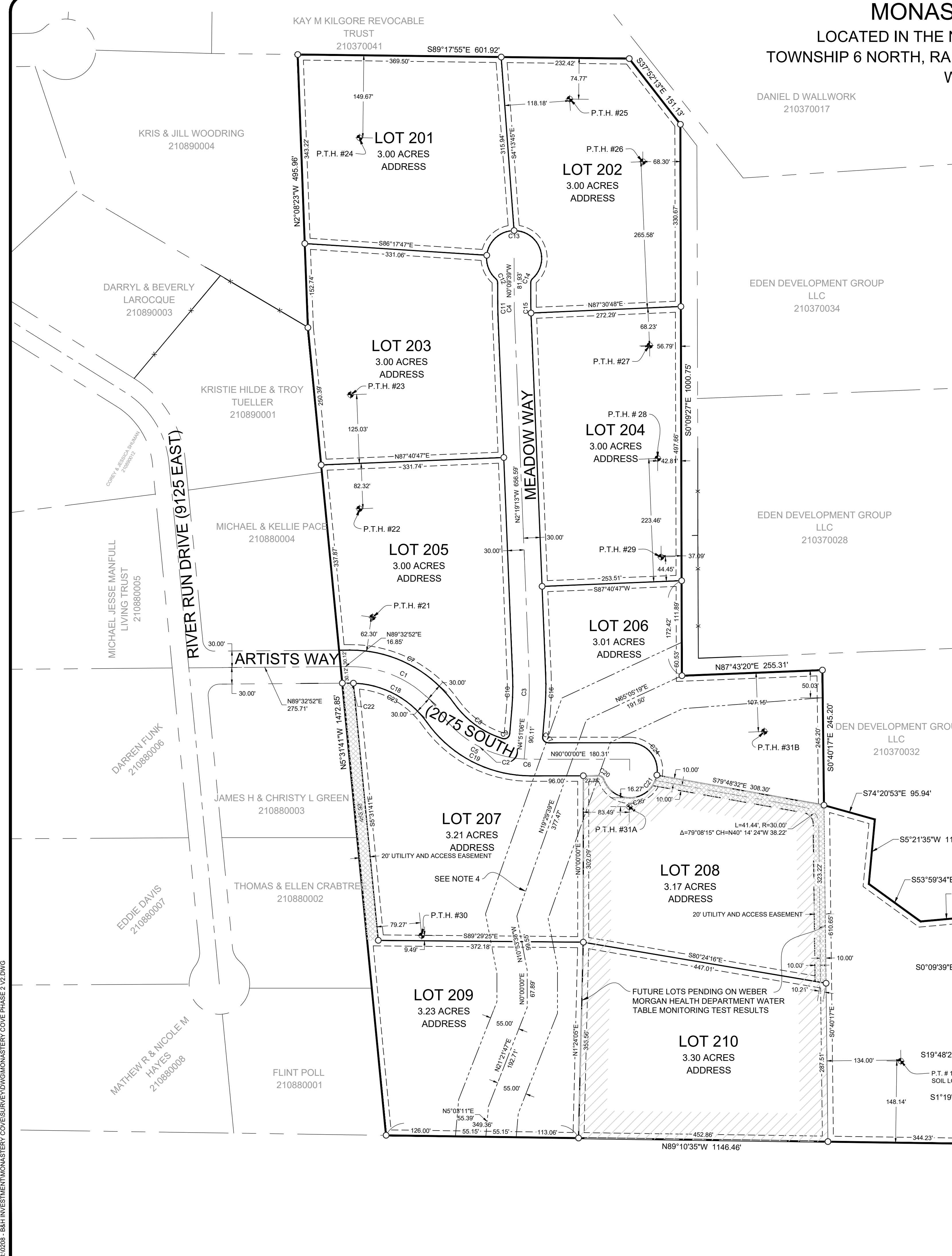
LOCATED IN THE NORTHEAST QUARTER OF SECTION 28,  
TOWNSHIP 6 NORTH, RANGE 2 EAST, SALT LAKE BASE AND MERIDIAN,  
WEBER COUNTY, UTAH  
DECEMBER 2019

VICINITY MAP  
NOT TO SCALE



### LEGEND

- WEBER COUNTY MONUMENT AS NOTED
- SET 24" REBAR AND CAP MARKED GARDNER ENGINEERING
- SUBDIVISION BOUNDARY
- LOT LINE
- ADJACENT PARCEL
- SECTION LINE
- EASEMENT
- EXISTING FENCE LINE
- 20' UTILITY AND ACCESS EASEMENT
- EXISTING WATER LINE
- EXISTING IRRIGATION LINE
- EXISTING STORM DRAIN
- EXISTING SANITARY SEWER
- EXISTING OVERHEAD POWER
- EXISTING GAS LINE
- EXISTING WATER METER
- EXISTING WATER MANHOLE
- EXISTING FIRE HYDRANT
- EXISTING WATER VALVE
- EXISTING STORM MANHOLE
- EXISTING CATCH BASIN
- EXISTING SEWER MANHOLE
- SOIL TEST PIT



PERC TEST HOLE #	DEPTH INCHES	FINAL STABILIZED PERC RATE	TEST STATUS	RECOMMENDED WASTEWATER DISPOSAL SYSTEM	STATIFIED SOILS EVALUATION #1864 BY WEBER-MORGAN HEALTH DEPT
PT 21-L	60"	2.5 MIN/IN	FAIL	AT-GRADE	0"-16" LOAM, GRAY, DRY, GRAVELLY & COBBLY SANDY LOAM, REDDISH BROWN, DRY, VERY GRAVELLY, COBBLY & STONEY
PT 21-M	48"	5.0 MIN/IN	PASS		
PT 21-H	36"	4.2 MIN/IN	FAIL		
PT 22-L	60"	5.6 MIN/IN	PASS	CONVENTIONAL	0"-17" LOAM, GRAY, DRY, GRAVELLY, COBBLY & STONEY
PT 22-M	48"	6.2 MIN/IN	PASS		17"-65" SANDY SKELETAL, DARK REDDISH BROWN, DRY
PT 22-H	36"	5.0 MIN/IN	PASS		
PT 23-L	60"	5.0 MIN/IN	PASS	CONVENTIONAL	0"-14" LOAM, GRAY, DRY, GRAVELLY & COBBLY
PT 23-M	48"	5.6 MIN/IN	PASS		14"-32" SANDY LOAM, LIGHT GRAY, VERY GRAVELLY & COBBLY
PT 23-H	36"	25.0 MIN/IN	PASS		32"-65" SANDY SKELETAL, PALE BROWN, DRY
PT 24-L	60"	4.5 MIN/IN	FAIL	WISCONSIN MOUND	0"-18" LOAM, GRAY, MOIST, GRAVELLY
PT 24-M	48"	2.9 MIN/IN	FAIL		18"-36" LOAM, GRAYISH BROWN, MOIST, GRAVELLY
PT 24-H	36"	25.0 MIN/IN	PASS		36"-45" HEAVY LOAM, BROWN, MOIST, GRAVELLY & STONEY
PT 25-L	60"	8.3 MIN/IN	PASS	CONVENTIONAL	0"-28" LOAM, BLACK, MOIST GRAVELLY, COBBLY
PT 25-M	48"	2.5 MIN/IN	PASS		26"-42" SANDY LOAM, PALE BROWN, DRY, VERY COBBLY, STONEY
PT 25-H	36"	7.1 MIN/IN	PASS		42"-60" LOAMY SAND, PALE BROWN, DRY, VERY COBBLY, STONEY
PT 26-L	60"	5.0 MIN/IN	PASS	CONVENTIONAL	0"-6" LOAM, GRAY, DRY, GRAVELLY, COBBLY, STONEY
PT 26-M	48"	12.5 MIN/IN	FAIL		6"-38" SANDY LOAM, PALE BROWN, DRY, VERY COBBLY, STONEY
PT 26-H	36"	4.5 MIN/IN	FAIL		38"-60" LOAMY SAND, REDDISH BROWN, MOIST, VERY COBBLY, STONEY
PT 27-L	60"	8.3 MIN/IN	PASS	CONVENTIONAL	0"-8" LOAM, GRAY, DRY, COBBLY & STONEY
PT 27-M	48"	7.1 MIN/IN	PASS		8"-36" SANDY LOAM, GRAY, DRY, VERY COBBLY & STONEY
PT 27-H	36"	5.6 MIN/IN	PASS		36"-57" SANDY SKELETAL, REDDISH BROWN, MOIST, COBBLY & STONEY
PT 28-L	60"	4.2 MIN/IN	FAIL	AT-GRADE	0"-10" LOAM, GRAY, DRY, COBBLY & STONEY
PT 28-M	48"	5.0 MIN/IN	FAIL		10"-27" SANDY LOAM, PALE BROWN, DRY, VERY COBBLY & STONEY
PT 28-H	36"	5.6 MIN/IN	PASS		27"-55" SANDY SKELETAL, REDDISH BROWN, MOIST
PT 29-L	60"	8.3 MIN/IN	PASS	CONVENTIONAL	0"-14" LOAM, GRAY, DRY, GRAVELLY
PT 29-M	48"	5.0 MIN/IN	PASS		14"-28" LOAM, GRAYISH BROWN, GRAVELLY, DRY
PT 29-H	36"	8.3 MIN/IN	PASS		28"-58" SANDY LOAM, REDDISH BROWN, DRY, COBBLY & STONEY
PT 30-L	60"	8.3 MIN/IN	PASS	CONVENTIONAL	0"-17" LOAM, GRAY, DRY, VERY GRAVELLY
PT 30-M	48"	5.0 MIN/IN	PASS		17"-48" LOAMY SKELETAL, DARK REDDISH BROWN, DRY
PT 30-H	36"	10.0 MIN/IN	PASS		
PT 31A-L	60"	1.2 MIN/IN	FAIL		0"-16" LOAM, BLACK, MOIST, GRAVELLY
PT 31A-M	48"	5.0 MIN/IN	PASS		16"-36" LOAM, BROWN, MOIST, GRAVELLY & STONEY
PT 31A-H	36"	16.7 MIN/IN	PASS		36"-60" SANDY SKELETAL, REDDISH BROWN, MOIST
PT 31B-L	60"	8.3 MIN/IN	PASS	CONVENTIONAL	0"-27" SILT LOAM, BLACK, MOIST, GRAVELLY
PT 31B-M	48"	5.2 MIN/IN	PASS		27"-41" LOAM, GRAYISH BROWN, MOIST, GRAVELLY
PT 31B-H	36"	5.5 MIN/IN	PASS		41"-52" LOAM, BROWN, MOIST
					52"-68" SANDY LOAM, BROWN, MOIST

**SOIL LOG #14902**  
LOCATION - UTM ZONE 12 NAD 83 439440E 4564344N.  
CULINARY WATER WELL MUST BE A MINIMUM OF 100 FEET FROM WASTE WATER FACILITIES.

DEVELOPER:  
B & H INVESTMENT  
CURTIS HYDE  
110 WEST JENNINGS LANE  
CENTERTVILLE, UTAH, 84014  
801-540-8505

**S2**  
**2**

COUNTY RECORDER  
ENTRY NO. \_\_\_\_\_ FEE PAID \_\_\_\_\_  
FILED FOR AND RECORDED \_\_\_\_\_  
AT \_\_\_\_\_ IN BOOK \_\_\_\_\_ OF OFFICIAL \_\_\_\_\_  
RECORDS, PAGE \_\_\_\_\_ RECORDED \_\_\_\_\_  
FOR \_\_\_\_\_  
COUNTY RECORDER \_\_\_\_\_  
BY: \_\_\_\_\_

**GARDNER ENGINEERING**  
CIVIL • LAND PLANNING  
MUNICIPAL • LAND SURVEYING  
5150 SOUTH 375 EAST OGDEN, UT  
OFFICE: 801.476.0202 FAX: 801.476.0066

P:\0208 - B&H INVESTMENT\MONASTERY COVE\BUREAU\MONASTERY COVE PHASE 2.DWG