

In anticipation of Pleasant View City assuming ownership of the Pole Patch sewer system, make reference to "Pleasant View City Standards"

EXISTING SEWER MAN HOLE CONNECT AND EXTEND LINE PER CENTRAL WEBER SEWER IMPROVEMENT DISTRICT STANDARDS

DON H & MINDY LEE SCOTT
160120041

PHOEBEAR LLC
160120042

LOT 2

EXISTING ACCESS ROAD TO BE RELOCATED TO THE CENTERLINE OF EASEMENT

sewer manhole is shown right on power line.

43' RADIUS TURNAROUND TO EDGE OF GRAVEL CENTERED ON COMMON LOT CORNER

55' RADIUS TURNAROUND EASEMENT CENTERED ON COMMON LOT CORNER

ALIGNMENT JESSICA CREEK DRIVE STATION=5+60.80 OFFSET=0.00R

PLEASANT VIEW CITY
160040010

JESSIE CREEK DRIVE (PRIVATE)

Weber County is requiring turnaround area to be flatter (4% or less). Transitions to/from this flatter area should accommodate flat bed semi trailers.

grade around fire hydrant such that hydrant is not in severe cut/fill slope; no "snake pit" as shown in City Standards required

FYI: City is not aware of fiber optic being in Pole Patch area

existing water line stops about here based on as-builts of utility systems

JESSIE CREEK DRIVE

LOT 1

LOT 3

Know what's below. Call 811 before you dig.

BLUE STAKES OF UTAH
UTILITY NOTIFICATION CENTER, INC.
www.bluestakes.org
1-800-662-4111

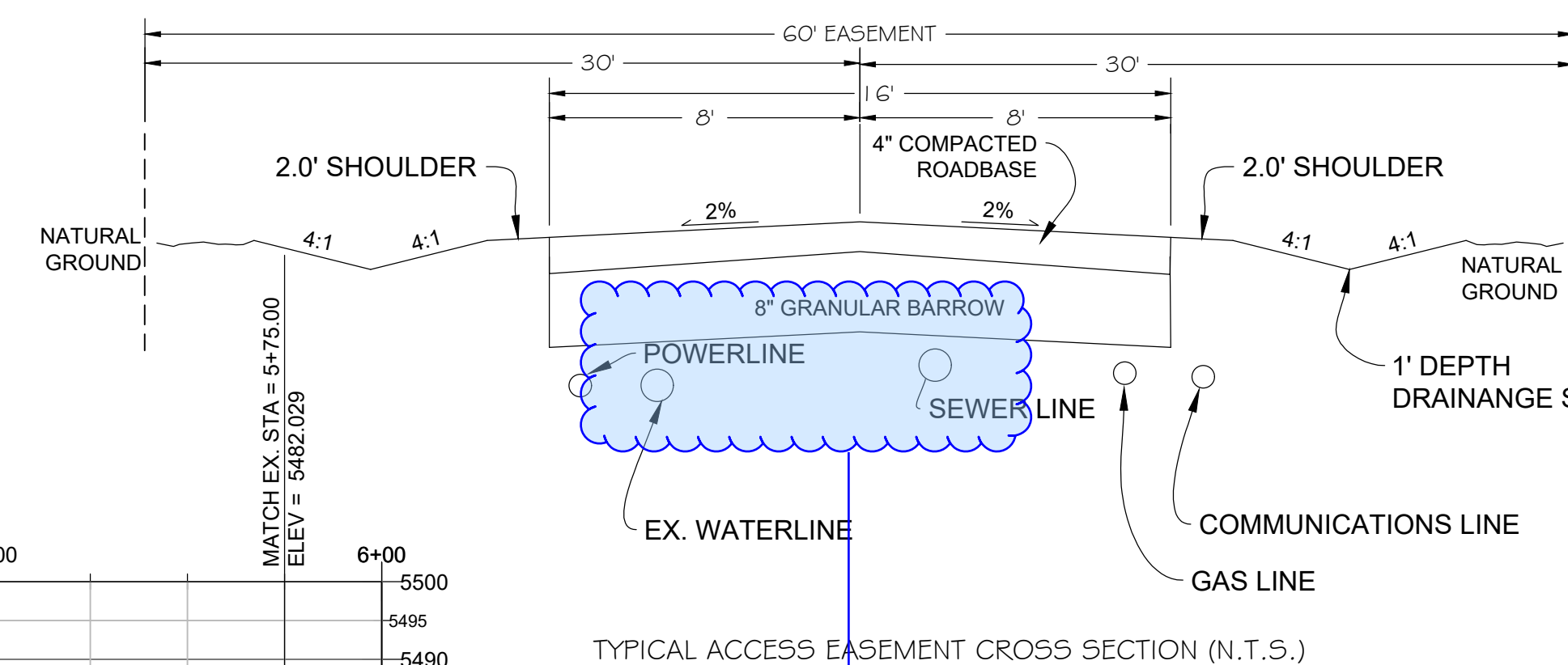
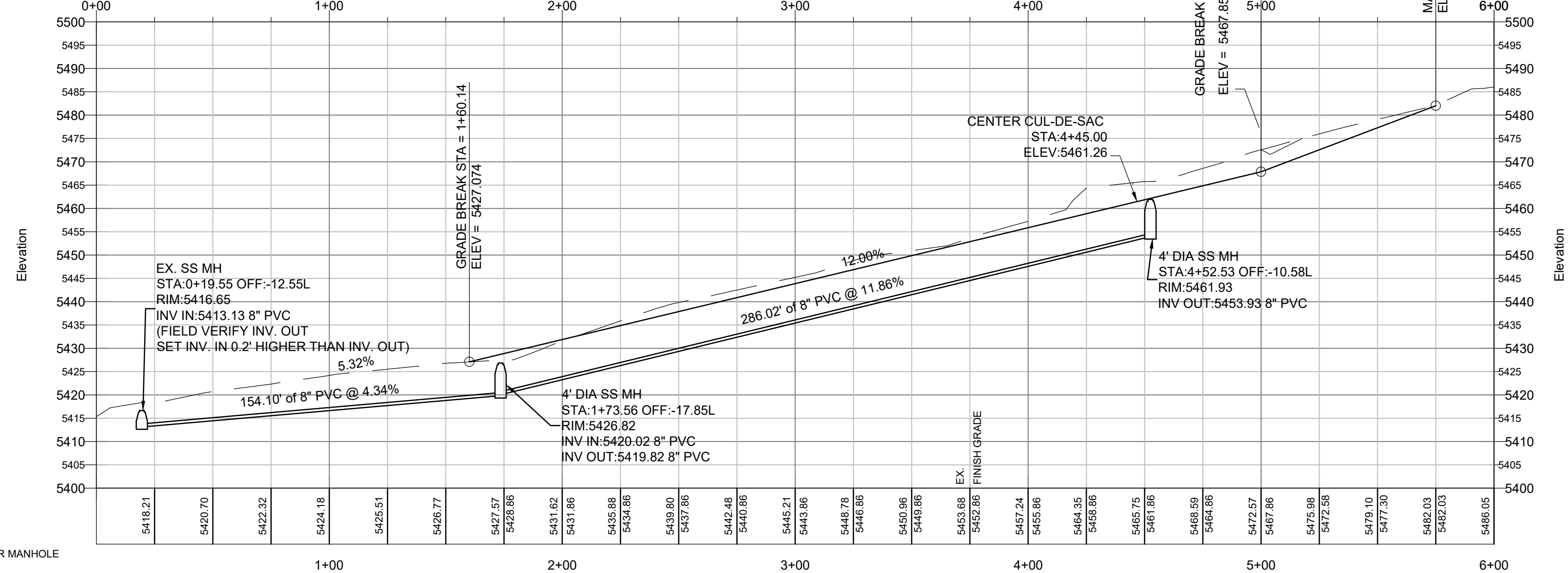
UTILITY DISCLAIMER

THE CONTRACTOR IS SPECIFICALLY CAUTIONED THAT EXISTING UNDERGROUND UTILITIES AND IMPROVEMENTS ARE SHOWN IN THEIR APPROXIMATE LOCATIONS BASED UPON RECORD INFORMATION AVAILABLE AT THE TIME OF PREPARATION OF PLANS. LOCATIONS MAY NOT HAVE BEEN VERIFIED IN THE FIELD AND NO GUARANTEE IS MADE AS TO ACCURACY OR COMPLETENESS OF THE INFORMATION SHOWN. IT SHALL BE RESPONSIBILITY OF THE CONTRACTOR TO DETERMINE THE EXISTENCE AND LOCATION OF THOSE UTILITIES SHOWN ON THESE PLANS OR INDICATED IN THE FIELD BY LOCATING SERVICES. ANY ADDITIONAL COSTS INCURRED AS A RESULT OF CONTRACTOR'S FAILURE TO VERIFY LOCATIONS OF EXISTING UTILITIES PRIOR TO BEGINNING OF CONSTRUCTION IN THEIR VICINITY SHALL BE BORNE BY THE CONTRACTOR AND ASSUMED INCLUDED IN THE CONTRACT.

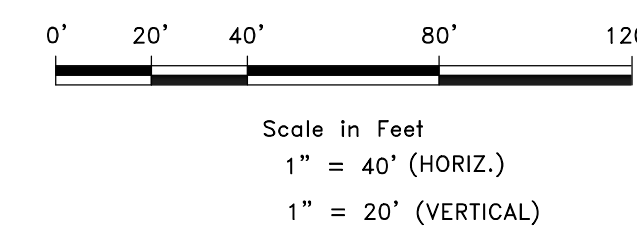
LEGEND

- | | | | |
|-------|-----------------------|---|------------------------|
| — | BOUNDARY LINE | ○ | FIRE HYDRANT |
| - - - | ADJOINER LINE | ⊙ | WATER METER |
| - - - | SETBACK LINE | ⊖ | EX FIBER OPTIC |
| - - - | PUE LINE | ⊕ | SANITARY SEWER MANHOLE |
| - - - | CENTER LINE | ⊗ | UTILITY LATERALS |
| - - - | EX FENCE LINE | ⊘ | EX POWER |
| - - - | SEWER LINE | | |
| - - - | STORM DRAIN LINE | | |
| - - - | WATER LINE | | |
| - - - | IRRIGATION WATER LINE | | |
| - - - | EX GAS | | |

JESSICA CREEK DRIVE PROFILE



show utilities as depicted in plan view; add 10' separation dimension between water and sewer lines



| | |
|-----------|-------------|
| SCALE | 1" = 40' |
| DATE | 12-5-2019 |
| DESIGN | WJS |
| DRAWN | WJS |
| CHECKED | TJM |
| REVISIONS | DESCRIPTION |
| DATE | |

| | |
|------|--|
| DATE | |
|------|--|

| | |
|------|--|
| DATE | |
|------|--|

PLAN AND PROFILE
POLE PATCH PHASE 3
JESSICA CREEK DRIVE
WEBER COUNTY, UTAH

GARDNER ENGINEERING
CIVIL - LAND PLANNING
MUNICIPAL - LAND SURVEYING
5150 SOUTH 375 EAST OGDEN, UT
OFFICE: 801-476-0202 FAX: 801-476-0066

CE1-01