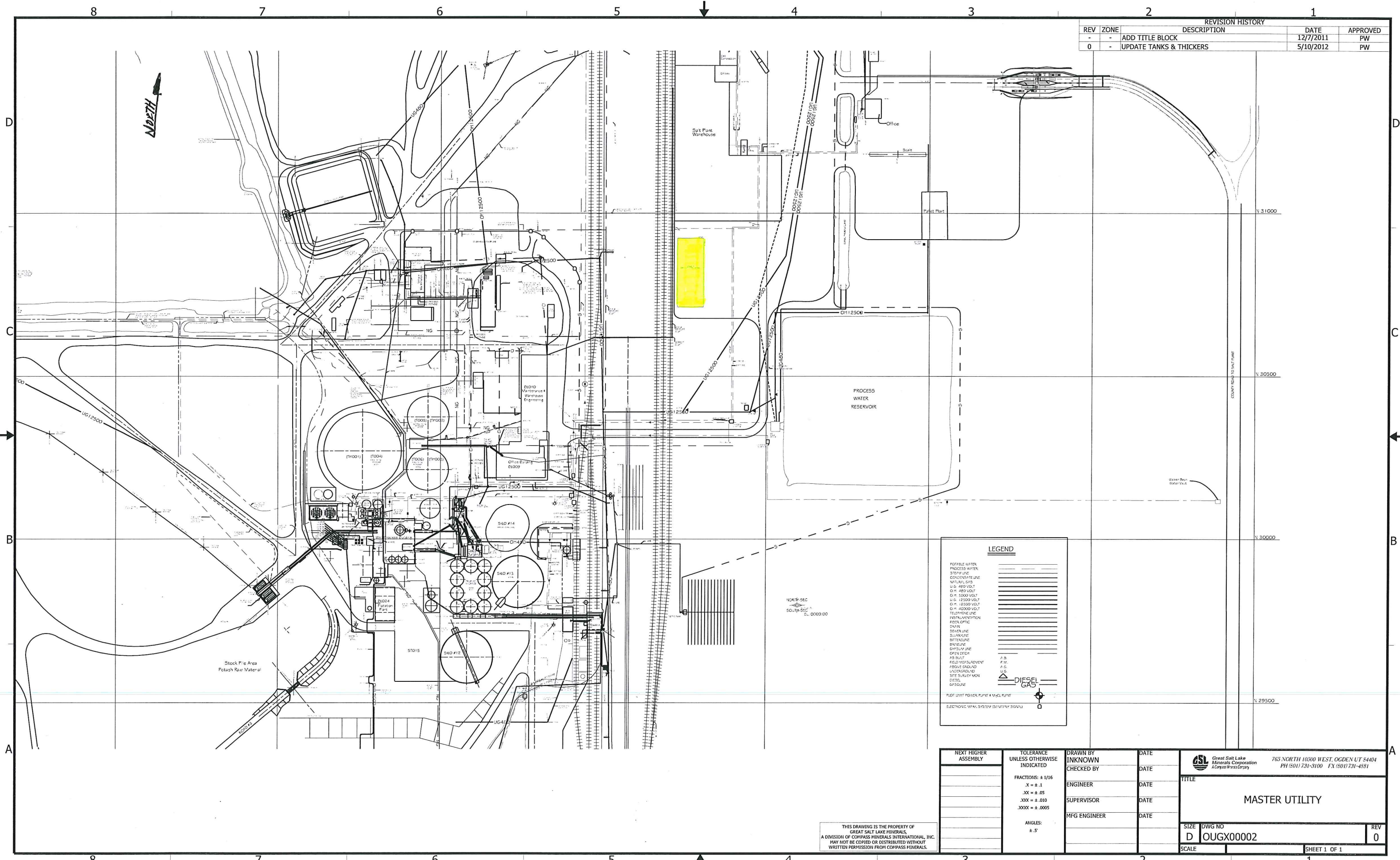


REVISION HISTORY				
REV	ZONE	DESCRIPTION	DATE	APPROVED
-	-	ADD TITLE BLOCK	12/7/2011	PW
0	-	UPDATE TANKS & THICKERS	5/10/2012	PW

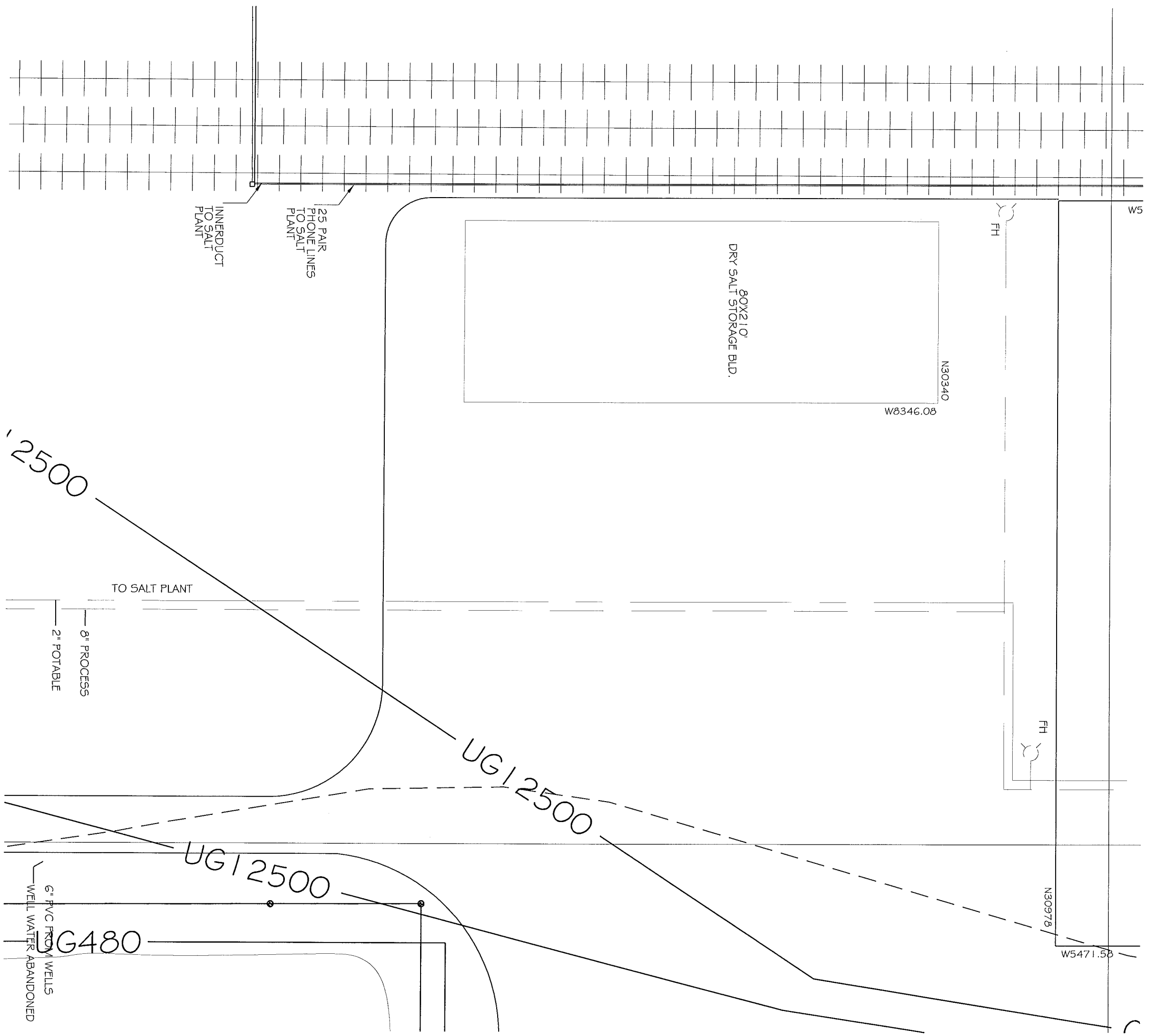


LEGEND	
POSSIBLE WATER	-----
PROCESS WATER	-----
STEAM LINE	-----
CONDENSATE LINE	-----
NATURAL GAS	-----
U.G. 480 VOLT	-----
O.H. 480 VOLT	-----
O.H. 1500 VOLT	-----
U.G. 1500 VOLT	-----
O.H. 1500 VOLT	-----
O.H. 45000 VOLT	-----
TELEPHONE LINE	-----
INSTRUMENTATION	-----
FOUR LINE	-----
ONE LINE	-----
SEWER LINE	-----
SURVEY LINE	-----
BATTERY LINE	-----
DIAPHRAGM	-----
GYPSUM LINE	-----
OPEN DITCH	-----
AS BUILT	-----
FIELD MEASUREMENT	-----
ABOVE GROUND	-----
UNDERGROUND	-----
SITE SURVEY MARK	-----
DIAPHRAGM	-----
GASOLINE	-----
PLANT UNIT POWER PLANT & MELT PLANT	-----
ELECTRICAL WIRING SYSTEM (BATTERY ROOM)	-----
A.S.	-----
F.W.	-----
A.G.	-----
U.G.	-----
DIESEL	-----
GAS	-----
FIELD UNIT POWER PLANT & MELT PLANT	-----
ELECTRICAL WIRING SYSTEM (BATTERY ROOM)	-----

THIS DRAWING IS THE PROPERTY OF
 GREAT SALT LAKE MINERALS,
 A DIVISION OF COMPASS MINERALS INTERNATIONAL, INC.
 MAY NOT BE COPIED OR DISTRIBUTED WITHOUT
 WRITTEN PERMISSION FROM COMPASS MINERALS.

NEXT HIGHER ASSEMBLY	TOLERANCE UNLESS OTHERWISE INDICATED	DRAWN BY	DATE
	FRACTIONS: ± 1/16	INKNOWN	
	X = ± .1	CHECKED BY	
	.XX = ± .05	ENGINEER	
	.XXX = ± .010	SUPERVISOR	
	.XXXX = ± .0005	MFG ENGINEER	
	ANGLES: ± .5'		

Great Salt Lake Minerals Corporation A Compass Minerals Company		765 NORTH 10500 WEST, OGDEN UT 84404 PH (801) 731-3100 FX (801) 731-4531	
TITLE			
MASTER UTILITY			
SIZE	DWG NO	REV	
D	OUGX00002	0	
SCALE	SHEET 1 OF 1		



2500

TO SALT PLANT

8" PROCESS
2" POTABLE

UG | 2500

UG | 2500

UG480

6" PVC FROM WELLS
WELL WATER ABANDONED

80X210'
DRY SALT STORAGE BLD.

N30340

W8346.08

N30978

W5471.58

W5

FH

FH