

2. POLLUTION PREVENTION REQUIREMENTS

2.1. Structural Controls. Minimize sediment transport off the site as follows:

- 2.1.1. *Stockpiled Material*. Stockpiled material must not be stored on an impervious surface, except a material that will not be transported with precipitation, such as two-inch graded and washed gravel, unless it will be permanently placed and the holding area will be swept clean the same day it is dropped. If stored temporarily for more than a day, it must be placed as far as feasibly possible from roads or other impervious surfaces, storm water inlets, or water bodies, and with stockpile perimeter runoff controls utilized.
- 2.1.2. *Perimeter Controls*. Perimeter controls such as silt fences, straw wattles, other filter berms, cut back curbs, vegetative buffers, etc., must be properly placed on the downslope sides of the project to prevent sediment from leaving the site during a storm event. As perimeter controls become loaded to 1/3 of capacity, they must be cleaned.
- 2.1.3. *Inlet Protection*. Storm-drain inlets on the project site and on adjacent roads immediately down gradient from the site must be protected if they receive drainage from the active construction site. Protection may be, but is not limited to, rock wattles, sand bags, proprietary devices, or other. Rock wattles and sand bags are not advised for use in winter because they can be destroyed or removed by snow plows.

2.2. Protection of Critical or Sensitive Areas: Critical or sensitive areas such as preservation of the drip line around trees, wetlands, buffer zones by water bodies, etc., must be separated and isolated by clearly marking the areas with environmental fencing.

2.3. Managing the Site to Minimize Sediment Transport Offsite.

- 2.3.1. The total area of soil disturbance at any one time must be minimized by disturbing only the area necessary to complete that stage of construction in the construction process.
- 2.3.2. Soil disturbances on steep slopes must be minimized. For purposes of this permit a steep slope is 70% (or 1 to 1.66, or 35 degrees), or greater. This means avoiding a disturbance of soils on steep slopes or if disturbing the soil surface is necessary providing a robust surface stabilizing cover (such as geomats, environmental blankets, or other robust slope stabilizing control) to prevent erosion.
- 2.3.3. Storm water volume and velocity must be controlled to minimize soil erosion and sediment transport by methods such as allowing or not obstructing infiltration and using velocity-control devices to reduce energy in runoff flowing on slopes.
- 2.3.4. Storm water discharges leaving the site, including both peak flowrates and total storm water volume, must be controlled to minimize channel and stream-bank erosion and scour in the immediate vicinity of discharge points. This may be accomplished using experience, estimates, and good judgement; unless unusual or extraordinary site conditions present a potential for excessive erosion, hillside/impoundment collapse, environmental/safety hazards, or other site problems; for which a professional engineer must be consulted.

General Storm Water Permit for Construction Activity Connected with Single Lot Housing Projects
UPDES Permit No. UTRH00000

2.3.5. *Thirty-Foot Vegetative Buffer.* If a waterbody is adjacent to, within 30 feet from, or passing through the project boundaries, a 30-foot natural buffer between the waterbody and construction activity must be provided. If a 30-foot natural buffer cannot be provided, a substitute control measure equivalent to the 30-foot buffer must be provided, or the SWPPP must contain an explanation why neither is feasible. If it is not feasible to maintain a 30-foot natural buffer, as much natural buffer as is possible must be preserved and coupled with placement of additional erosion and sediment controls designed, implemented, and maintained to substitute and be equivalent to the 30-foot natural buffer.

The requirement for a natural buffer or substitute controls does not apply to any area outside of the project boundaries, but if a waterbody is within, for example, 20 feet from the project boundary, there must be 10 feet of natural vegetative buffer or substitute controls, or if within 25 feet from the project boundary, there must be 5 feet of natural vegetative buffer or substitute controls, and so forth.

2.3.5.a. Substitution for a natural buffer should be calculated with models such as USDA's RUSLE2 or WEPP, or by using SEDCAD, SEDIMOT, or other similar models. In lieu of using a model for calculation of a substitution buffer, the permittee shall deploy the following:

2.3.5.a.i. For every full 9 feet of natural buffer that is not provided on slopes up to 10 percent, one row of an effective perimeter control, such as a silt fence, staked straw wattle, proprietary or other filter berm, or other perimeter control, must be properly placed. For example, if only 15 feet of natural buffer can be provided, the permittee will substitute one row of a perimeter control in addition to the 15 feet of natural buffer to make up for the 15 feet of buffer that could not be preserved.

2.3.5.a.ii. In addition to the requirements above for substitutions in place of the 30-foot natural buffer, on slopes between 10 percent and 30 percent, five feet of surface stabilization must be placed down gradient of and between each perimeter control substituted. For slopes steeper than 30 percent, 6 feet of surface stabilization must be placed downgradient of and between each perimeter control substituted, such as mulch, hydromulch, wood chips, bark, compost, erosion mat, etc., but excluding tackifiers.

2.4. Good Housekeeping Measures. The permittee must address the following:

2.4.1. *Track Out.* Track-out pads (see definitions) and or rumble strips (see definitions) must be used to prevent dirt/mud tracked on streets as vehicles leave the site. If traffic onto and off the site is not frequent, a site operator may impose a blanket prohibition of vehicle traffic onto the site, allowing for the occasions to deliver and unload, but afterwards providing sweeping and/or cleaning of tracked out dirt (keep in mind that vehicles leaving a muddy site with no track out protection can track mud for several

General Storm Water Permit for Construction Activity Connected with Single Lot Housing Projects
UPDES Permit No. UTRH00000

blocks – the operator is liable for all track out from the site except for a dirt stain after sweeping -- see note after 3.2.2.). Dirt or mud tracked out on the street must not be washed or hosed into a storm drain. Tracked out mud or dirt on the street must be swept and/or scraped up as needed every day (see 3.2.2).

- 2.4.2. *Curb Ramps*: This permit prohibits the intentional placement of dirt and/or mud on paved streets or sidewalks. Curb ramps may be crushed rock, wood or steel ramps, or another material that does not wash away with storm water.
 - 2.4.3. *Waste and Debris*. The site must be cleaned of waste and debris daily (see daily self-inspection 3.2.2). Waste and debris must be contained and secured adequately to prevent scattering from wind until it is removed from the site and disposed of properly.
 - 2.4.4. *Portable Toilet*. Portable toilets must be tied down, staked down, or secured using other measures to prevent turn over, and they must be placed away from a road gutter, storm water inlet, or waterbody.
 - 2.4.5. *Washing of Concrete, Stucco, and Paint Equipment*. A plastic film-lined pit or sealed container must be provided for washout of equipment used for concrete, stucco, and water-based paint. After completion of concrete, stucco, and paint tasks, the permittee must dispose of the waste by drying and sending solids to a landfill. Oil-based paint cleanout must be done in containers, taken off-site, and disposed of separately.
- 2.5. Soil Compaction/Top Soil. Topsoil must be preserved and placed on areas to be landscaped or areas planned for receiving vegetative cover, unless infeasible. Soil compaction must be minimized on areas that will not be used for support of structural elements such as roads, parking areas, structures, etc., unless infeasible.
- 2.6. Stabilization Requirement. Stabilization requirements are as follows:
- 2.6.1. *Stabilization requirements for areas that receive 20 inches of rainfall annually or greater*: Stabilization of disturbed areas must, at a minimum, be initiated immediately whenever any clearing, grading, excavating or other earth disturbing activities have permanently ceased on any portion of the site or have temporarily ceased on any portion of the site for greater than 14 calendar days. Stabilization can be sodding, planting, application of mulch (wood chips, rock, gravel, bark, compost, cat tracking on straw, hydromulch, etc.), application of geotextiles or erosion blankets, application of a tackifier, seeding (including preparation for germination and growth), a combination of these methods, or other method.
 - 2.6.2. *Stabilization or equivalent requirements for arid and semi-arid areas (areas receiving less than 20 inches of rainfall annually)*: Stabilization for visually flat areas is not required (roughly up to 5 percent, 1 to 20 slope, or 2.3 degrees slope). Areas with slopes up to roughly 20 percent (1 to 5 slope or 11.3 degrees) must have, at minimum, velocity-control devices in every area where storm water collects and flows, spaced close enough across the flow to stop erosion (see also 2.3.3). Soil surface stabilization such as sodding, planting, hydromulch, compost, bark, cat tracking on straw, gravel,

geotextiles, erosion blankets, or other stabilization methods is required on all other sloped areas, increasing the robust nature of stabilizing cover commensurately with increasingly steeper slopes.

2.6.3. *Permanent Stabilization for Arid areas.*

2.6.3.a. In addition to requirements above (see 2.6.2), permanent stabilization requires seeding on all areas that are not covered with permanent stabilization elements or structural elements such as building structure or pavement, or that are engineered or intended for structural purposes like graveled parking or dirt roads.

2.6.3.b. Disturbed areas on projects located outside of populated and developed areas and where no irrigation water is available and where future periodic landscaping maintenance is not planned must be reclaimed with a seed mix of plants indigenous to the area or tolerant to the local climatic conditions that does not include invasive species. Velocity-control devices may be permanent or temporary. If velocity-control devices are intended for temporary use, they must be biodegradable and designed durable enough to withstand extreme weather.

2.7. Construction Dewatering. Construction dewatering can occur onsite without an additional UPDES permit if it is infiltrated or contained onsite and is not discharged offsite. Otherwise, construction dewatering discharges must be permitted under the General Permit for Construction Dewatering and Hydrostatic Testing UPDES Permit UTG070000, which can be obtained online through submittal of an NOI at <https://secure.utah.gov/waterquality>.

2.8. Pollution Prevention Measures. The permittee must design, install, implement, and maintain effective pollution prevention measures to minimize the discharge of pollutants. At a minimum, such measures must address the following:

2.8.1. *Vehicle, Wheel, and Other Washing.* Minimize the discharge of pollutants from equipment and vehicle washing, wheel-wash water, and other wash waters. Wash waters must be treated in a sediment basin or alternative control that provides equivalent or better treatment prior to discharge

2.8.2. *Exposure to Pollutants.* Minimize the exposure of building materials, building products, construction wastes, trash (see 2.4.3), landscape materials, fertilizers, pesticides, herbicides, detergents, sanitary waste (see 2.4.4), and other materials present on the site to precipitation and to storm water. Minimization of exposure is not required in cases where the exposure to precipitation and to storm water will not result in a discharge of pollutants, or where exposure of a specific material or product poses little risk of storm water contamination (e.g., final products and materials intended for outdoor use).

2.8.3. *Leaks and Spills.* Minimize the discharge of pollutants from spills and leaks and implement chemical spill and leak prevention and response procedures.

2.9. Prohibited Discharges. The following discharges are prohibited:

2.9.1. Wastewater from washout or cutting of concrete (see 2.4.5),

**General Storm Water Permit for Construction Activity Connected with Single Lot Housing Projects
UPDES Permit No. UTRH00000**

- 2.9.2. Wastewater from washout and cleanout of stucco, paint, form release oils, curing compounds, and other construction materials (see 2.4.5),
- 2.9.3. Fuels, oils, or other pollutants used in vehicle and equipment operation and maintenance,
- 2.9.4. Soaps or solvents used in vehicle and equipment washing.

3. SELF-INSPECTION REQUIREMENTS.

3.1. Inspector Qualifications. Weekly inspections (see 3.2.1 below) must be done by a qualified person. A qualified person means a person knowledgeable in the principles and practices of erosion and sediment control that possesses the skills to:

- 3.1.1. Assess conditions at the construction site that could impact storm water quality,
- 3.1.2. Assess the effectiveness of a storm water control measure selected to control the quality of storm water discharges from the construction activity.

3.2. Self-Inspections.

- 3.2.1. *Weekly Self Inspections:* Self-inspections must occur every 7 days. A written report is required (see 3.4).
- 3.2.2. *Daily Site Check:* Each day of construction activity, the site must be inspected for dirt in the street and trash on the site. Streets must be swept clean (see note below), if soiled. Dirt must be removed off the street (not swept or washed into the storm drain system). Trash on the site must be picked up and disposed of into trash containers (see 2.4.3.) or disposed of off-site (e.g., municipal/private garbage collection service or construction waste landfill). Sub-contractors must be held responsible by the permit holder to perform these duties in accordance with this paragraph for the activities they are contracted to perform. A written report is not required, however the operator will keep a daily log (for the active construction days) listing the initials of the person doing the site check.

Note: Swept clean means sweeping and scraping. Scraping if there is dirt left behind that is crusted and that sweeping will not pick up. This does not mean removing the microscopic layer of dust or the minute amounts of dirt in the cracks and crevices of the surface left behind staining the pavement.

3.3. Weekly Self-Inspection Requirements.

- 3.3.1. *Areas to check include the following:*
 - 3.3.1.a. Areas that have been cleared, graded, or excavated that are not stabilized,
 - 3.3.1.b. All storm water control measures, including perimeter controls,
 - 3.3.1.c. Material piles, waste-disposal containers, sanitary facilities, loose trash, litter, washout areas, portable toilets, track out pad, egress points (if any), etc.,
 - 3.3.1.d. Storm water conveyances through the site, treatment areas, and drainages,
 - 3.3.1.e. All storm water discharge points, street gutters, storm water inlets,
 - 3.3.1.f. Areas that have been temporarily stabilized,
 - 3.3.1.g. Areas that have been permanently stabilized and are completed do not need further inspections.
- 3.3.2. *Items to check include the following:*
 - 3.3.2.a. All erosion and sediment controls and other pollution prevention controls

General Storm Water Permit for Construction Activity Connected with Single Lot Housing Projects
UPDES Permit No. UTRH00000

have been installed, are operational, and are working as intended to minimize pollutant discharges. Determine if any controls need to be replaced, repaired, or maintained.

3.3.2.b. Identify any locations where new or modified storm water controls are necessary.

3.3.2.c. Signs of visible erosion and sedimentation (i.e., sediment deposits) that have occurred and are attributable to discharges from your site,

3.4. Weekly Inspection Reports. The weekly self-inspection report must be written within 24 hours of inspection and must include:

3.4.1. The initials of the person doing the inspection,

3.4.2. The date of the inspection,

3.4.3. The weather during the inspection,

3.4.4. The problems that were found needing correction (as they pertain to 3.3.1 and 3.3.2 above),

3.4.5. The date when corrective action is completed,

3.4.6. All self-inspection reports must be filed with other permit records regarding the permit. Inspection reports must be available during an oversight inspection.

3.5. Corrective Action: Corrective action must be completed before the next weekly inspection.

3.6. Inspections by an Oversight Authority. A copy of an oversight inspection report must be filed and be available for review during other oversight inspections.

3.7. Record Keeping. Records regarding this permit, the NOI, the NOT, the SWPPP, inspection reports, other related information and documents must be preserved for 3 years after the submission of the NOT (see 5.10).

4. STORM WATER POLLUTION PREVENTION PLAN (SWPPP).

4.1. SWPPP Requirement. The permittee must prepare a SWPPP before the NOI for the project is submitted. The SWPPP must address all the applicable requirements in Part 2.

4.1.1. *SWPPP Site Design*. The design, installation, and maintenance of erosion and sediment controls must address factors such as the amount, frequency, intensity and duration of precipitation; the nature of resulting storm water runoff; and soil characteristics, including the range of soil particle sizes expected to be present onsite. These may be accomplished using experience, estimates, and good judgement, unless unusual or extraordinary site conditions create hazards for which a professional engineer must be consulted.

4.1.2. *Surface Outlets*: When discharging from basins and impoundments, utilize outlet structures that withdraw water from the surface, unless infeasible.

4.2. Contents of a SWPPP. A SWPPP must contain the following:

4.2.1. *Contacts*. The contacts for the site with contact information (name, address, telephone, email) including owner, general contractor, and any other party that significantly affects the implementation of the SWPPP or has responsibilities over the SWPPP.

4.2.2. *Sequence and Estimated Dates of Construction Activities*. Listed in the sequence with estimated dates including the following:

4.2.2.a. Start and end of excavation activities, initial excavation, backfill excavation and final grading,

4.2.2.b. Any temporary or permanent cessation of earth-disturbing activities,

4.2.2.c. Start and end of landscaping if this is done as part of the construction activity before the home is sold.

4.2.3. *Site Map or Chart*. A site map may be hand drawn (as close to scale as possible) or may be a copy of an architect drawing including the following information:

4.2.3.a. Boundaries of the property,

4.2.3.b. Boundaries of soil surface disturbances, including any outside the boundaries of the property,

4.2.3.c. Slopes, including areas of steep slopes,

4.2.3.d. Locations of stockpiles of soils, storage of construction materials, portable toilets, trash containers, concrete washout pits or containers, egress points, and track out pads,

4.2.3.e. Waterbodies, wetlands, and natural buffer areas,

4.2.3.f. Locations and types of BMPs or storm water control measures for the control and/or treatment of storm water flowing onto, through, and/or offsite,

4.2.3.g. Locations of storm water inlets, storm water discharge points going off site,

General Storm Water Permit for Construction Activity Connected with Single Lot Housing Projects
UPDES Permit No. UTRH00000

- 4.2.3.h. Areas that will be temporarily or permanently stabilized during the construction period.
- 4.2.4. *Thirty-Foot Natural Buffer.* The SWPPP must show the dimensions and placement of the 30-foot natural buffer, the substitute control measures, or a detailed explanation of why a natural buffer or substitute control measure could not be applied.
- 4.2.5. *Pollutants.* A list of construction site pollutants including the pollutant-generating activity, and an inventory of pollutants for each pollutant generating activity (e.g., paints, solvents, form oil, fuels, and other chemicals; applications, materials, and liquids that if released could pollute storm water).
- 4.2.6. *Waste Management.* Waste management procedures including soil removal, clearing debris removal, demolition removal, trash disposal, construction-waste disposal, and sanitary-waste disposal.
- 4.2.7. *Training.* The permittee will ensure that each subcontractor or utility provider is aware of their responsibilities for keeping soil on the site and preventing pollution. The permittee must keep in mind that they are responsible for and may be issued fines for poor performances by their subcontractors and utility providers. Consideration will be given if the permittee can document when and what instructions were given to the subordinate party.
- 4.2.8. *NOI and Permit.* The SWPPP must contain a copy of this permit and a copy of the NOI for the project.
- 4.2.9. *SWPPP Signature and Certification.* The SWPPP must be signed and certified by both the Owner and the General Contractor in accordance with 5.16.1.a.
- 4.2.10. *MS4 Approval of Project.* For areas where projects are within a regulated MS4's jurisdiction (see definitions in Part 6; the list of regulated MS4's is found on <http://www.deq.utah.gov/Permits/water/updes/stormwatermun.htm>), the SWPPP must contain the signature and date of the MS4 reviewer who has approved the proposed project for construction (see 1.7.).
- 4.2.11. *Availability of the SWPPP.* The SWPPP must be available at the construction site covered under this permit during onsite construction activity, unless the SWPPP is available online. If the SWPPP is available online there must be a sign (see 1.10) that describes where the SWPPP can be accessed online. The SWPPP is a plan for the site, and workers must be able to refer to the SWPPP and update it as needed to manage the site (including SWPPPs found on the internet). The SWPPP is not required to be on the site when construction workers leave for the day or when there is no activity occurring on the site, but at all times there must be posted contact information where the SWPPP can be obtained (see Part 1.10). The SWPPP must be made available within 24 hours to DWQ representatives or other oversight inspectors, e.g., U.S. Environmental Protection Agency [EPA] or a local MS4, on request, or immediately during an inspection on the site when there are workers and activity at the site.

General Storm Water Permit for Construction Activity Connected with Single Lot Housing Projects
UPDES Permit No. UTRH00000

4.2.12. *Required Modifications of the SWPPP.* The SWPPP must be modified as follows:

4.2.12.a. During inspections when it is determined from observations of site conditions that storm water control measures are:

4.2.12.a.i. Not adequate or not shown in the SWPPP, or

4.2.12.a.ii. Changes in the SWPPP are necessary for compliance with this permit.

4.2.12.b. When an oversight authority determines that the SWPPP is not adequate based on missing a required SWPPP or permit item, not addressing pollutants properly, not being up to date and reflecting current site conditions, or not being clear, thorough, and understandable.

4.2.13. *SWPPP Modifications Deadline.* Modifications to the SWPPP from inspections or oversight authority direction must occur before or during the next weekly inspection.

5. STANDARD PERMIT CONDITIONS.

5.1. Duty to Comply.

5.1.1. The permittee must comply with all conditions of this permit. Any permit noncompliance constitutes a violation of the Utah Water Quality Act (the Act) and is grounds for enforcement action; for permit termination, revocation and reissuance, or modification; or for denial of a permit renewal application.

5.1.2. *Penalties for Violations of Permit Conditions*

5.1.2.a. *Violations.* The Act provides that any person who violates the Act, Utah wastewater or storm water rules, or conditions of a permit issued under the Act, is subject to a fine of \$10,000 per day.

5.1.2.b. *Willful or Gross Negligence.* The Act provides that any person who discharges a pollutant to waters of the State as a result of criminal negligence or who intentionally discharges is criminally liable and is subject to imprisonment and a fine of up to \$50,000 per day (Utah Code Annotated 19-5-115).

5.1.2.c. *False Statements.* The Act provides that any person who knowingly makes any false material statement, representation, or certification in any application, record, report, plan, or other document filed or required to be maintained under the Act, the rules, or this permit, or who knowingly falsifies, tampers with, or renders inaccurate, any monitoring device or method required to be maintained under the Act shall upon conviction, be punished by a fine of not more than \$10,000 or by imprisonment for 6 months, or by both (Utah Code Annotated 19-5-115(4)).

5.2. Duty to Reapply. If a permittee wishes to continue an activity regulated by this permit after the expiration date of this permit, the permittee must apply for and obtain a new permit except as provided in 1.6 and 1.7 of this permit.

5.3. Need to Halt or Reduce Activity not a Defense. It shall not be a defense for a permittee in an enforcement action that it would have been necessary to halt or reduce the permitted activity in order to maintain compliance with the conditions of this permit.

5.4. Duty to Mitigate. The permittee shall take all reasonable steps to minimize or prevent any discharge in violation of this permit that has a reasonable likelihood of adversely affecting human health or the environment.

5.5. Duty to Provide Information. The permittee shall furnish to the Director or an authorized representative, within a reasonable time, any information that is requested to determine compliance with this permit. The permittee must also furnish to the Director or an authorized representative copies of records to be kept by this permit.

5.6. Other Information. When the permittee becomes aware that he or she failed to submit any relevant facts or submitted incorrect information in the NOI or in any other report to the Director, he or she shall promptly submit such facts or information.

General Storm Water Permit for Construction Activity Connected with Single Lot Housing Projects
UPDES Permit No. UTRH00000

- 5.7. Oil and Hazardous Substance Liability. Nothing in this permit shall be construed to preclude the institution of any legal action or relieve the permittee from any responsibilities, liabilities, or penalties to which the permittee is or may be subject under the Act.
- 5.8. Property Rights. The issuance of this permit does not convey any property rights of any sort, nor any exclusive privileges, nor does it authorize any injury to private property nor any invasion of personal rights, nor any infringement of Federal, State or local laws or regulations.
- 5.9. Severability. The provisions of this permit are severable, and if any provision of this permit, or the application of any provision of this permit to any circumstance, is held invalid, the application of such provision to other circumstances, and the remainder of this permit shall not be affected thereby.
- 5.10. Record Retention. The permittee shall retain copies of SWPPPs and all reports required by this permit, and records of all data used to complete the NOI to be covered by this permit, for a period of at least three years from the date that the permit for the site is terminated (see 3.7). This period may be extended by request of the Director at any time.
- 5.11. Addresses. All written correspondence under this permit shall be directed to the DWQ at the following address:
- Department of Environmental Quality
Division of Water Quality
195 North 1950 West
P.O. Box 144870
Salt Lake City, Utah 84114-4870
- 5.12. State Laws. Nothing in this permit shall be construed to preclude the institution of any legal action or relieve the permittee from any responsibilities, liabilities, or penalties established pursuant to any applicable State law or regulation under authority preserved by Utah Code Annotated 19-5-117.
- 5.12.1. No condition of this permit shall release the permittee from any responsibility or requirements under other environmental statutes or regulations.
- 5.13. Proper Operation and Maintenance. The permittee shall at all times properly operate and maintain all facilities and systems of treatment and control and related appurtenances which are installed or used by the permittee to achieve compliance with the conditions of this permit and with the requirements of SWPPPs. Proper operation and maintenance also includes adequate laboratory controls and appropriate quality assurance procedures. Proper operation and maintenance requires the operation of backup or auxiliary facilities or similar systems, installed by a permittee only when necessary to achieve compliance with the condition of the permit.
- 5.14. Inspection and Entry. The permittee shall allow, upon presentation of credentials, the Director or an authorized representative to:
- 5.14.1. Enter upon the permittee's premises where a regulated facility or activity is located or conducted or where records must be kept under the conditions of this permit;

General Storm Water Permit for Construction Activity Connected with Single Lot Housing Projects
UPDES Permit No. UTRH00000

- 5.14.2. Have access to and copy at reasonable times, any records that must be kept under the conditions of this permit.
- 5.14.3. Inspect at reasonable times any facilities, equipment (including monitoring and control equipment), practices or operations regulated or required under this permit; and
- 5.14.4. Sample or monitor at reasonable times for the purposes of assuring permit compliance or as otherwise authorized by law, any substances or parameters at any location.

5.15. Reopener Clause.

- 5.15.1. *Reopener Due to Water Quality Impacts.* If there is evidence indicating that the storm water discharges authorized by this permit cause, have the reasonable potential to cause, or contribute to a violation of a water-quality standard, the discharger may be required to obtain an individual permit or an alternative general permit in accordance with 1.7.4 of this permit or the permit may be modified to include different limitations and/or requirements.
- 5.15.2. *Reopener Guidelines.* Permit modification or revocation will be conducted according to Utah Administrative Code R317-8-5.6 and UAC R317-8-6.2.
- 5.15.3. *Permit Actions.* This permit may be modified, revoked and reissued, or terminated for cause. The filing of a request by the permittee for a permit modification revocation and reissuance, termination, a modification of planned changes or anticipated noncompliance does not stay any permit condition.

5.16. Signatory Requirements.

- 5.16.1. All NOIs, SWPPPs, reports, certifications or information submitted to the Director, or that this permit requires be maintained by the permittee, shall be signed as follows:
 - 5.16.1.a. All NOIs and SWPPPs shall be signed by both the owner or lessee of the project/property and the general contractor.
 - 5.16.1.b. All reports required by the permit and other information requested by the Director or by an authorized representative of the Director shall be signed by a person described above or by a duly authorized representative of that person. A person is a duly authorized representative only if:
 - 5.16.1.b.i. The authorization is made in writing by a person described above and submitted to the Director; and
 - 5.16.1.b.ii. The authorization specifies either an individual or a position having such as the position of manager, operator, superintendent, or position of equivalent responsibility or an individual or position having overall responsibility for environmental matters for the company. A duly authorized representative may therefore be either a named individual or any individual occupying a named position.
 - 5.16.1.c. *Certification.* Any person signing documents under 5.16 shall make the following certification:

General Storm Water Permit for Construction Activity Connected with Single Lot Housing Projects
UPDES Permit No. UTRH00000

I certify under penalty of law that this document and all attachments were prepared under my direction or supervision in accordance with a system designed to assure that qualified personnel properly gathered and evaluated the information submitted. Based on my inquiry of the person or persons who manage the system, or those persons directly responsible for gathering the information, the information submitted is, to the best of my knowledge and belief, true, accurate, and complete. I am aware that there are significant penalties for submitting false information including the possibility of fine and imprisonment for knowing violations.

- 5.16.2. If a document is to be signed electronically, the Division's rules regarding electronic transactions govern, if applicable.

6. DEFINITIONS

Arid Areas: Areas with an average annual rainfall of 10 inches or less.

Common Plan of Development (or sale): A plan to subdivide a parcel of land into separate parts for separate sale. This can be for a residential, commercial, or industrial development. The plan originates as a single parcel that is separated into parts. This usually goes through an approval process by a local governmental unit, but in some cases, it may not require that process. The original plan is considered the "common plan of development or sale" whether phased or completed in steps.

Additional information related to Common Plan of Development for Permit Purposes:

For UPDES storm water permit purposes, a common plan must have been initiated after October, 1992. A common plan of development or sale remains so until each lot or section of the development has fulfilled its planned purposes (e.g. in a residential development as homes are completed, stabilized, and sold or occupied). As lots or separated sections of the development are completed, the lot or section is stabilized, and the plan purposes are fulfilled for that area, lot, or section, it is no longer part of the common plan of development or sale (e.g. if a home is sold in a development and the owner decides to add a garage somewhere on the lot, that garage project is not part of the common plan of development or sale.

In this process a common plan of development or sale may become reduced in size and/or separated by completed areas which are no longer part of the common plan of development or sale, but all unfinished lots remain part of the same common plan development or sale until they are completed, stabilized, and fulfilled according to the purposes of the plan.

Construction Activity: Earth-disturbing activities, such as the clearing, grading, and excavation of land.

Construction Waste: Discarded material such as packaging materials, scrap construction materials, masonry products, timber, steel, pipe, and electrical cuttings, plastics, and Styrofoam.

Corrective Action: For the purposes of the permit, any action taken to 1) repair, modify, or replace any storm water control used at the site; 2) clean up and dispose of spills, releases, or other deposits found on the site; and 3) remedy a permit violation.

Dewatering: The act of draining rainwater and/or groundwater from building foundations, vaults, and trenches (Note: if dewatering is occurring on a construction site and it causes a discharge to waters of the State, it must be permitted separately under the General Permit for Construction Dewatering and Hydrostatic Testing, UPDES Permit UTG070000).

Director: The director of the Division of Water Quality.

Discharge Point: For the purposes of this permit, the location where collected and concentrated storm water flows are discharged from the construction site.

Final Stabilization: All disturbed areas must be covered by permanent structures such as pavement, concrete slab, building, etc., or for areas not covered by permanent structures but that are receiving 20 inches or more of average annual precipitation, vegetation has been established with a uniform (e.g.,

General Storm Water Permit for Construction Activity Connected with Single Lot Housing Projects
UPDES Permit No. UTRH00000

evenly distributed, without large bare areas) perennial vegetative cover equivalent to 70 percent of the natural background vegetative cover. In the case of areas that are not covered by permanent structures, but that are receiving less than 20 inches of average annual precipitation (arid areas, 0-10 inches; semi-arid areas, 10-20 inches), final stabilization is equivalent to the requirements of 2.6.3 of this permit, including the provisions for permanent stabilization.

Impervious Surface: For the purpose of this permit, any land surface with a low or no capacity for water infiltration including, but not limited to, pavement, sidewalks, parking areas, driveways, or rooftops.

Indian Country: Defined at 40 CFR §122.2 as follows:

1. All land within the limits of any Indian reservation under the jurisdiction of the United States Government, notwithstanding the issuance of any patent, and, including rights-of-way running through the reservation;
2. All dependent Indian communities within the borders of the United States whether within the originally or subsequently acquired territory thereof; and
3. All Indian allotments, the Indian titles to which have not been extinguished, including rights-of-ways running through the same.

Infeasible: Infeasible means not technologically possible or not economically practicable and achievable in light of best industry practices. DWQ notes that it is not intentional for permit storm water control efforts required in the permit to conflict with State water rights law. In the case of conflict, State water rights law supersedes.

Install or Installation: When used in connection with storm water controls, to connect or set in position storm water controls to make them operational.

Municipal Separate Storm Sewer System or MS4: A storm-sewer system owned and operated by a state, city, town, county, district, association, or other public body created by or pursuant to State law having jurisdiction over disposal of storm water that discharges to waters of the State (e.g., Sandy City owns and operates the MS4 within the jurisdiction of Sandy City, or essentially Sandy City is the MS4).

Natural Buffer: For the purposes of this permit, an area of undisturbed natural cover surrounding surface waters within which construction activities are restricted. Natural cover includes the vegetation, exposed rock, or barren ground that exists before earth-disturbing activities begin.

Oversight Authority: Oversight authorities for storm water permits are agents from the EPA, DWQ or the Municipality of jurisdiction, when they are addressing compliance of storm water permits.

Owner: For the purpose of this permit an owner has ownership of a property on which construction activity is taking place, but it also includes ownership of a project for which construction activity is occurring on property that is leased. An owner is the party that has ultimate control over construction plans and specifications, including the ability at the highest level to make modifications to those plans and specifications. "Owner" in this context is the party that has ultimate control over the destiny of a project.

Permittee: The owner and/or the general contractor (those that signed on the NOI), for the project.

General Storm Water Permit for Construction Activity Connected with Single Lot Housing Projects
UPDES Permit No. UTRH00000

Pollutant-Generating Activities: At construction sites, for the purposes of this permit, those activities that lead to or could lead to the generation of pollutants, either as a result of earth-disturbance or a related support activity. Some of the types of pollutants that are typically found at construction sites are as follows:

- Sediment
- Nutrients
- Heavy metals
- Pesticides and herbicides
- Oil and grease
- Bacteria and viruses
- Trash, debris, and solids
- Treatment polymers
- Any other toxic chemicals

Pollution Prevention Measures: Storm water controls designed to reduce or eliminate the addition of pollutants to construction site discharges through analysis of pollutant sources, implementation of proper handling/disposal practices, employee education, and other actions.

Project Site: A project site is not necessarily contained within the property boundaries designated for the final construction objective, or property owned by the owner of the project. The project site includes all areas affected by the construction process where disturbances, storage, or other construction activity occurs. If an area outside of property boundaries is used for the construction process, DWQ assumes the permittee has the right to access and use that area and the permittee must also meet permit requirements in that area.

Receiving Water: A "Water(s) of the State" is as defined in UAC R317-1-1, into which the regulated storm water discharges (see waters of the State listed below).

Rumble Strip: A rigid ramp/track (often made of steel) that vehicles drive over that causes tires to flex and shake for the removal of dirt.

Semi-Arid Areas: Areas with an average annual rainfall of between 10 and 20 inches.

Stabilization: The use of vegetative and/or non-vegetative cover to prevent erosion and sediment loss in areas of disturbed soil exposed from the construction process.

Storm water: Means storm water runoff, snowmelt runoff, and surface runoff and drainage.

Storm Water Control Measures: Refers to any storm water control, BMP, or other method used to prevent or reduce the discharge of pollutants to waters of the state.

General Storm Water Permit for Construction Activity Connected with Single Lot Housing Projects
UPDES Permit No. UTRH00000

Storm Water Inlet: An entrance or opening to a storm water conveyance system, generally placed below grade so as to receive storm water drainage from the surrounding area.

Storm Event: A precipitation event that results in a measurable amount of precipitation.

Track Out Pad: A track out pad is a pad normally made up of 4 to 6 inches of up to 6 inch cobble rocks or gravel of various size (the size is sometimes specified by a local MS4). Sometimes it is underlain with a fabric to keep dirt and mud separated from rock or gravel. It is wide enough to underlay the tires of any/all traffic leaving a construction site as vehicles exit the site. Its function is to flex and shake the tires to dislodge mud and dirt from the tires of vehicles leaving the construction site. Track out pads must be stirred or worked periodically so that mud or dirt collected is moved to the bottom and the rock/gravel on the pad is clean and effective dislodging more mud/dirt.

Waters of the State: All streams, lakes, ponds, marshes, watercourses, waterways, wells, springs, irrigation systems, drainage systems, and all other bodies or accumulations of water, surface and underground, natural or artificial, public or private, that are contained within, flow through, or border upon this state or any portion thereof, except that bodies of water confined to and retained within the limits of private property, and that do not develop into or constitute a nuisance, or a public health hazard, or a menace to fish and wildlife, shall not be considered to be "Waters of the State" under this definition (see Utah Code Annotated, 19-5-102(23)(a) &(b), and UAC R317-1-1).

APPENDIX D: Daily Self-Inspection Log (permit part 3.2.2).

APPENDIX E: Inspection Reports

APPENDIX F: Additional Information

For permits such as local permits, dewatering, stream alteration, wetland, and out of date SWPPP documents, delegation of authority forms, etc.

APPENDIX G: BMP Specifications and Details

Label BMPs to match the sections identified in this document.

1. PRESERVATION OF EXISTING VEGETATION
 2. CONST. PHASING
 3. CONST. ENTRANCE
 4. SILT FENCING / WATTLES
 5. STORM DRAIN INLET PROTECTION
 6. VEGETATIVE BUFFER(S)
 7. SITE STABILIZATION
 8. EQUIPMENT FUELING AND CONTAINMENT
 9. WASTE MGMT.
 10. DUST SUPPRESSION
- 2.1 SWPPP SIGN
 - 2.3.1 Lot Cut Down
 - 2.3.2 GUTTER DAM
 - 2.3.4 MANUAL SWEEPING
 - 2.3.5 TOPSOIL PRESERVATION Policy
 - 2.4.1 HOSE
 - 2.5.1 SCRAPE TIRES
 - 2.5.2 PARKING PAD
 - 2.5.3 Forklift Policy
 - 2.6.1 TRASH RECEPTACLE
 - 2.6.2 HEAVY TRASH Policy
 - 2.6.3 EXCAVATION SPOIL ENVELOPE Policy
 - 2.6.4 PORTABLE TOILET
 - 2.6.5 CONCRETE WASHOUT
 - 2.6.6 DEPT GUTTER DAMS
 - 2.7.1 STORAGE Policy
 - 2.7.2 UTILITY BARK FILL STABILIZING ZONE
 - 2.7.3 LANDSCAPING STABILIZING ZONE

2.8.1. BACKYARD STABILIZATION PLAN

3.0. SPILL CONTROL PLAN

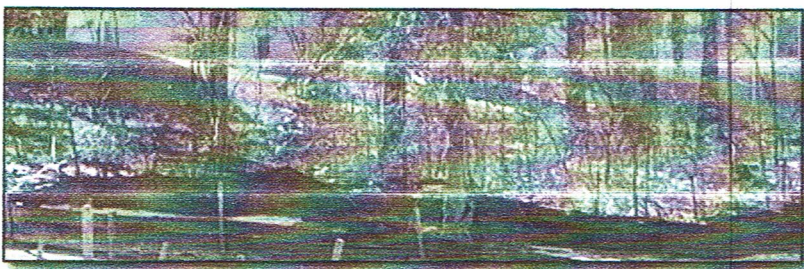
CITY SITE CONDITIONS; MAINTENANCE REQUIREMENTS

Best Management Practices for Construction Sites

Top Ten BMPs: 1. Preservation of Existing Vegetation

- Minimize clearing and the amount of exposed soil.
- Identify and protect areas where existing vegetation, such as trees, will not be disturbed by construction activity.
- Protect streams, stream barriers, wild wood lands, wetlands, or other sensitive areas from any disturbance or construction activity by fencing or otherwise clearly marking these areas.

1. [Preservation of Existing Vegetation \(preservation-of-existing-vegetation.htm\)](#)
2. [Construction Phasing \(phasing.htm\)](#)
3. [Construction Entrances \(entrances.htm\)](#)
4. [Silt Fencing \(silt-fencing.htm\)](#)
5. [Storm Drain Inlet Protection \(storm-drain-inlet-protection.htm\)](#)
6. [Vegetative Buffers \(vegetative-buffers.htm\)](#)
7. [Site Stabilization \(site-stabilization.htm\)](#)
8. [Equipment Fueling and Containment \(equipment-fueling-containment.htm\)](#)
9. [Waste Management \(waste-management.htm\)](#)
10. [Fugitive Dust Suppression \(fugitive-dust-suppression.htm\)](#)



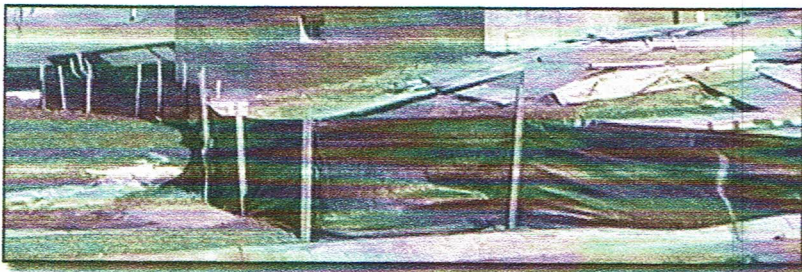
Contact [Paul Harding \(mailto:pharding@utah.gov\)](mailto:pharding@utah.gov) (801) 536-4108 for further information on the content of this page.

Best Management Practices for Construction Sites

Top Ten BMPs: 2. Construction Phasing

- Sequence construction activities so that the soil is not exposed for long periods of time.
- Schedule or limit grading to small areas.
- Install key sediment control practices before site grading begins.
- Schedule site stabilization activities, such as landscaping, to be completed immediately after the land has been graded to its final contour.

1. [Preservation of Existing Vegetation \(preservation-of-existing-vegetation.htm\)](#)
2. [Construction Phasing \(phasing.htm\)](#)
3. [Construction Entrances \(entrances.htm\)](#)
4. [Silt Fencing \(silt-fencing.htm\)](#)
5. [Storm Drain Inlet Protection \(storm-drain-inlet-protection.htm\)](#)
6. [Vegetative Buffers \(vegetative-buffers.htm\)](#)
7. [Site Stabilization \(site-stabilization.htm\)](#)
8. [Equipment Fueling and Containment \(equipment-fueling-containment.htm\)](#)
9. [Waste Management \(waste-management.htm\)](#)
10. [Fugitive Dust Suppression \(fugitive-dust-suppression.htm\)](#)



Contact [Paul Harding \(mailto:pharding@utah.gov\)](mailto:pharding@utah.gov) (801) 536-4108 for further information on the content of this page.