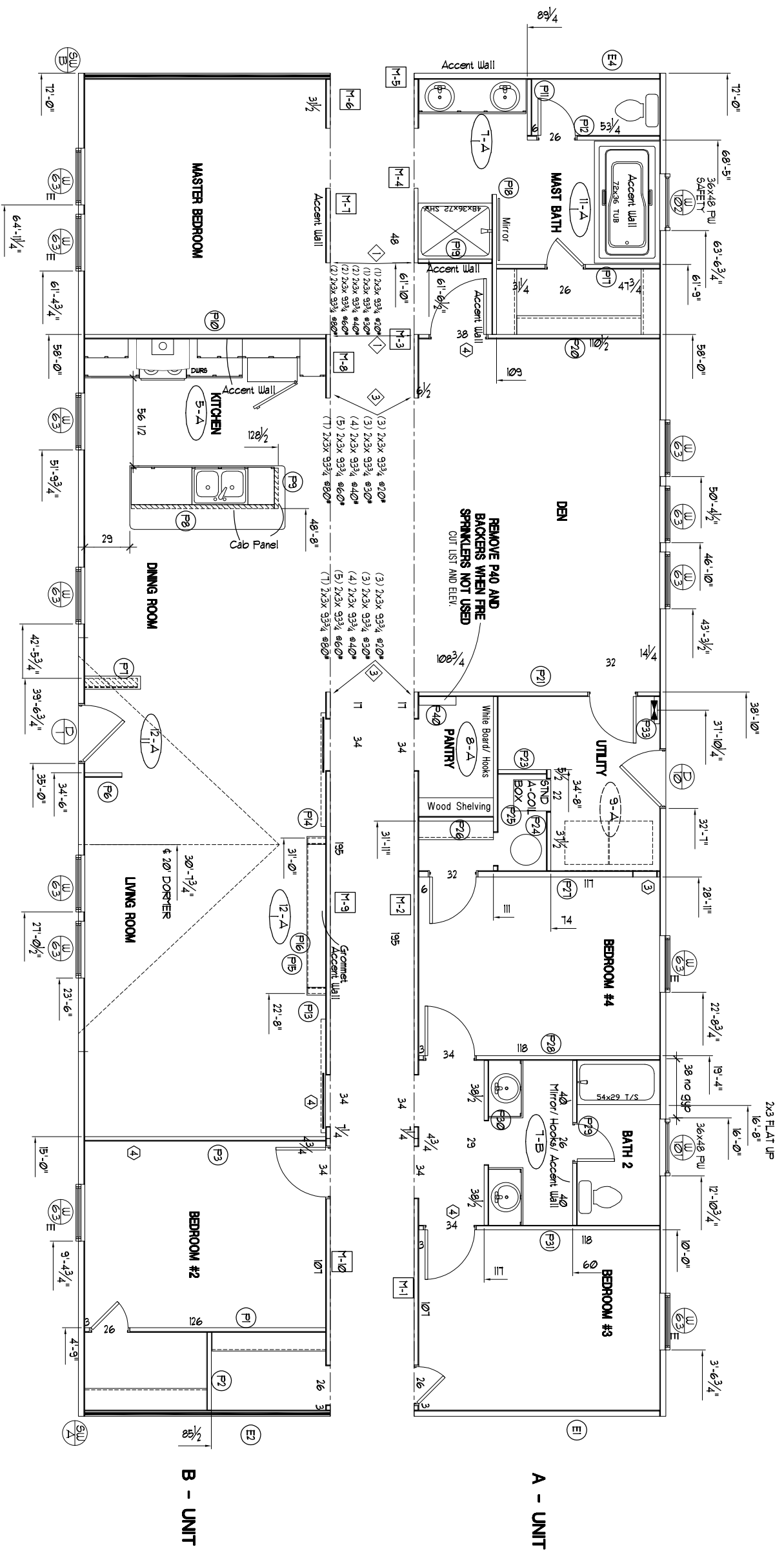


ADD THERMO-PLY TO ALL MARRIAGE LINE WALLS



Model # Breeze 25
 Box Width - 162"
 Box Length - 66"
 Max. Height - 10'
 Max. Weight - 1500 lbs
 Max. Wind - 140 mph
 Max. Snow - 20"
 Max. Rain - 5.0"
 Max. Ice - 1.0"
 Max. Hail - 1.0"

Version R13.13

Wind Zone 1 Standard Roof	Wind Zone 2 Standard Roof	Wind Zone 3 Standard Roof
3"	3"	3"
12'	12'	12'
225	225	225
2	2	2
211	211	211
148	148	148
140	140	140
225	225	225
2	2	2
302	302	302

PRODUCT	MODEL NO.	DATE	REVISED
PROMOTIONAL	BREEZE 2.5	5-7-18	
SQ. FT.	1,944	5-7-18	
SHEET	1-44	2-13-19	GL

SIDEWALL NOTES:

ADD BACKERS AT WALLS THAT DO NOT ALIGN WITH "ON MOD" STUDS

CEILING NOTES:
 ADD LAY-FLAT BACKERS OVER ALL TRANSVERSE WALLS THAT DO NOT HAVE A TRUSS OVER THEM!

ADD TRUSS W/ SHEATHING OVER ALL INTERIOR SHEAR WALLS!

SPECIAL DRAFTER CHECKER

SERIAL #
 RUN #

NOTES:

CPT PAD 72 SQ.YD.

MIRROR SCHEDULE

ROOM	QUANTITY
MASTER BATH	60x40, 40x72
GUEST BATH	(4) 24x36

96" SIDEWALL HEIGHT
80" WDW HEADER HEIGHT

WALL FINISH SCHEDULE

ALL WALLS - 1/2" SHEETROCK

- ① INDICATES 20x20 AIR RETURN GRILL
- ② INDICATES 8x8 AIR RETURN GRILL IN DOOR HEADER
- ③ INDICATES 16x8 AIR RETURN GRILL IN DOOR HEADER
- ④ INDICATES 12x6 AIR RETURN GRILL IN DOOR HEADER
- ⑤ INDICATES STRAPPING
- ▲ XX# XXXX CLUSTER REQ'D

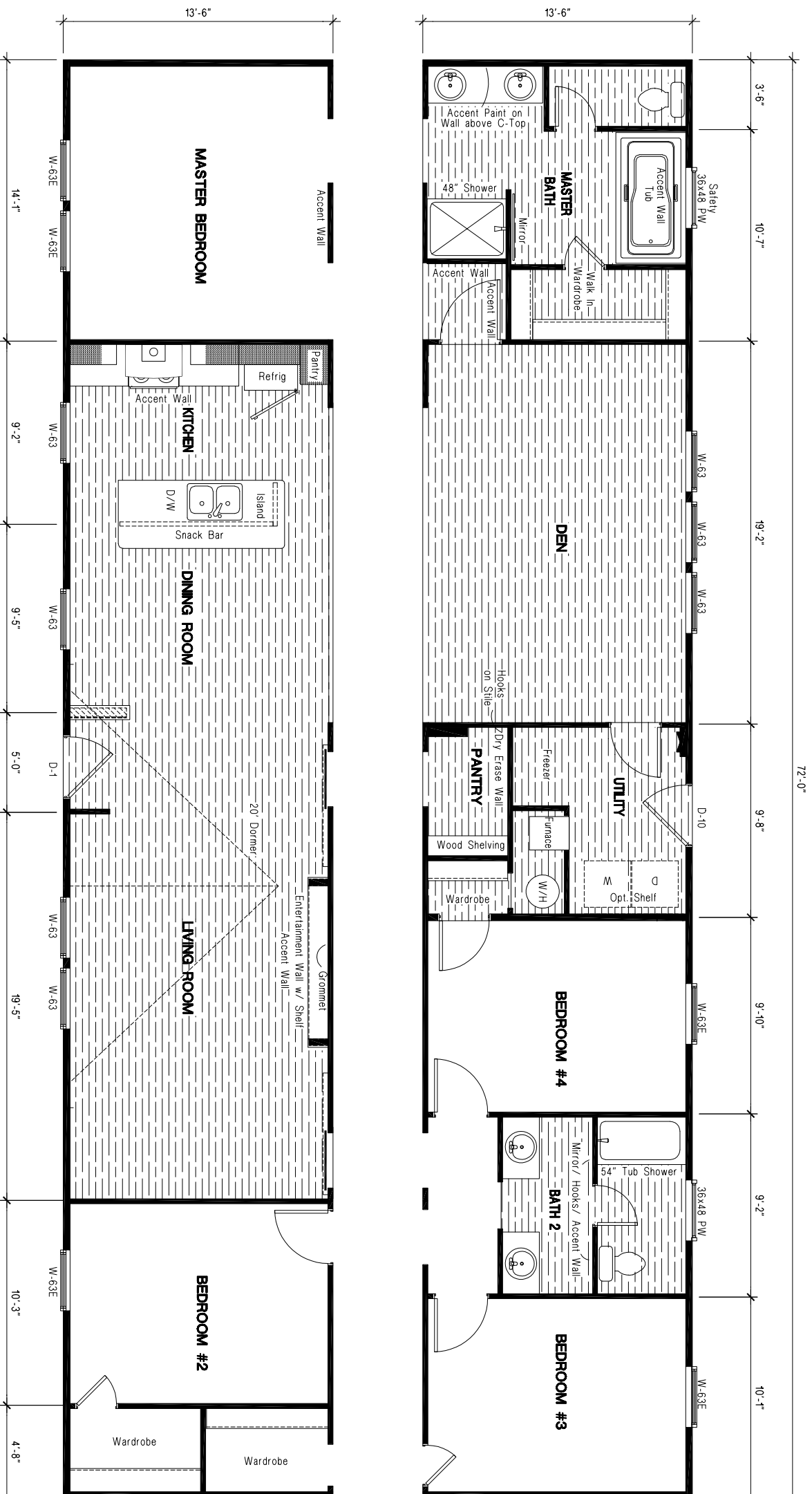
STRAP NOTE: (3204)
 ADD (1) STRAP AT ALL CENTERLINE OPENINGS UNLESS OTHERWISE NOTED

Manufacturing West, Inc.
 Albany Division - Plant #972
 2445 S.W. PACIFIC BLVD.
 ALBANY, OR 97321
 Phone (541) 926-8631
 Fax (866) 491-6847

DRAWING TITLE
PRODUCTION PLAN

ORIGINAL DRAWING BY : G. LUND

SIDEWALL: 4" OR 6"
4" WALLS



BREEZE 2.5
FOUR BEDROOM, TWO BATH - 1,944 SQ. FT.

Manufacturing West, Inc.
 Albany Division - Plant #972
 2445 S.W. PACIFIC BLVD.
 ALBANY, OR 97321
 Phone (541) 926-8631
 Fax (866) 491-6847

SALES FLOOR PLAN

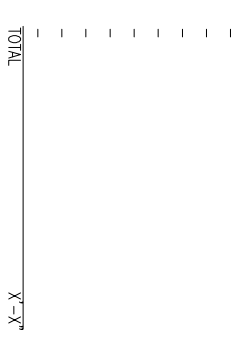
4" WALLS

PRODUCT	PROMOTIONAL	MODEL NO.	BREEZE 2.5
SQ. FT.	1,944	DATE	5-7-18
SHEET	1-A1	REVISED	-

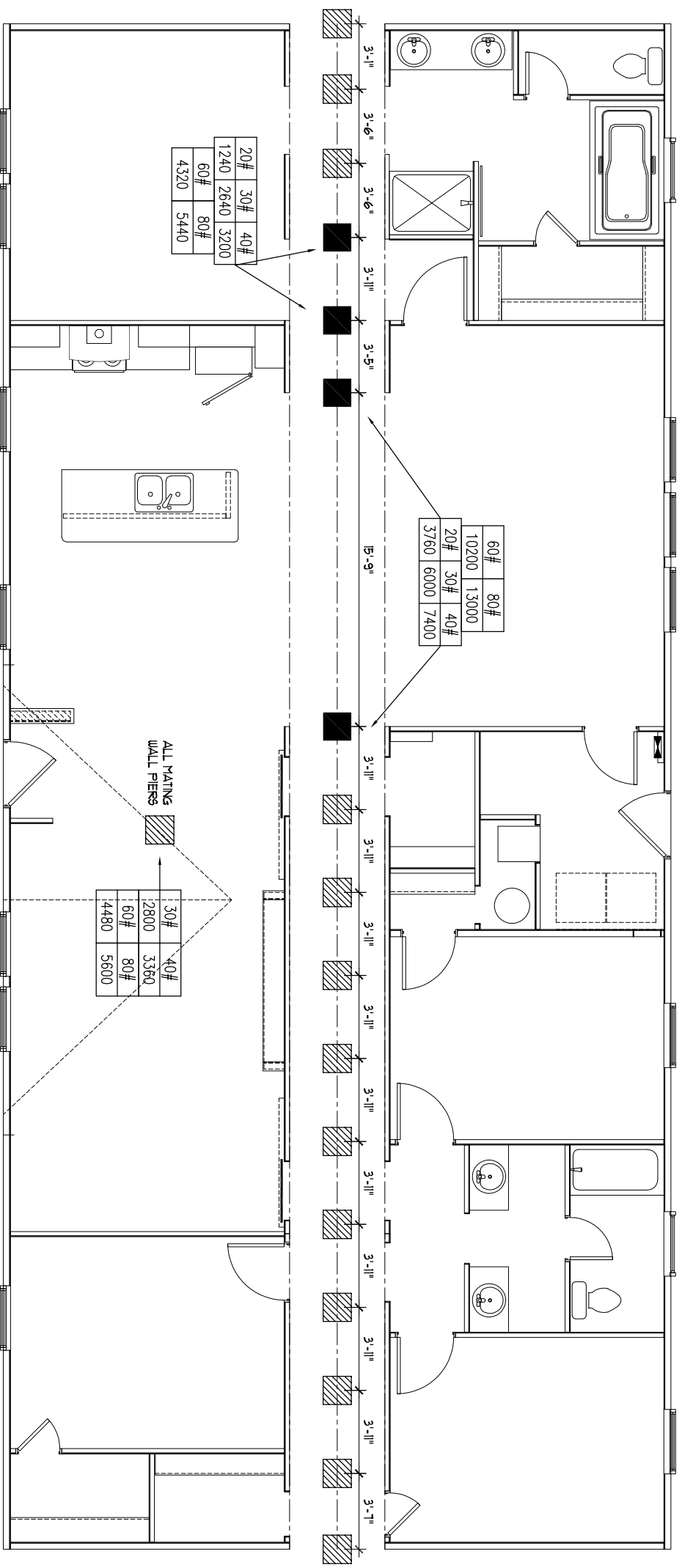
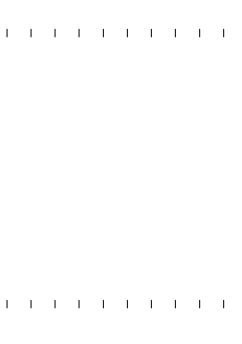


13-6" CARPET LAYOUT

STANDARD CARPET



OPTIONAL CARPET



20#	30#	40#
1240	2640	3200
60#	80#	
4320	5440	

60#	80#	
10200	13000	
20#	30#	40#
3760	6000	7400

30#	40#
12800	3360
60#	80#
4480	5600

B - UNIT

A - UNIT

ALL MATING WALL PIERS

LEGEND

PIERS PER TABLE 5 THROUGH 5C OF INSTALLATION MANUAL

PIERS REQ'D. FOR 30# ROOF & HIGHER SEE TABLE 7B OR 7C OF INSTALLATION MANUAL FOR SPACING AND LOADING

SET-UP NOTES:

1. CENTERLINE PIERS MUST BE LOCATED UNDER RIDGE BEAM SUPPORT POSTS.

2. THE STANDARD CONFIGURATION OF THIS HOME MAY HAVE BEEN MODIFIED. A CUSTOM PRINT SHOULD BE PROVIDED. IF NOT, THE SET-UP CONTRACTOR SHALL CALL CMH MANUFACTURING WEST FOR A CUSTOM PIER PRINT.

Manufacturing West, Inc.
 Albany Division - Plant #972
 2445 S.W. PACIFIC BLVD.
 ALBANY, OR 97321
 Phone (541) 926-8631
 Fax (866) 491-6847

DRAWING TITLE
CARPET & PIER LOC.

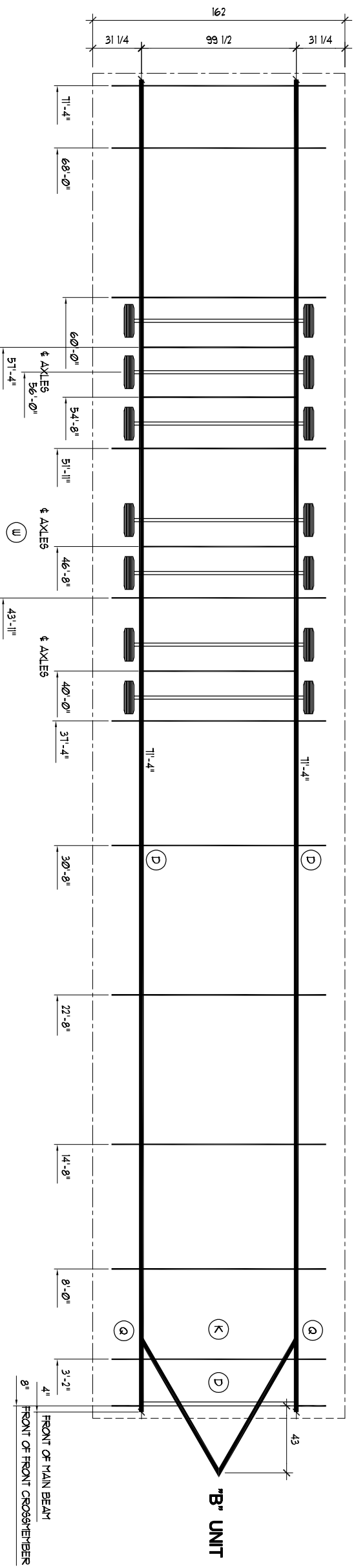
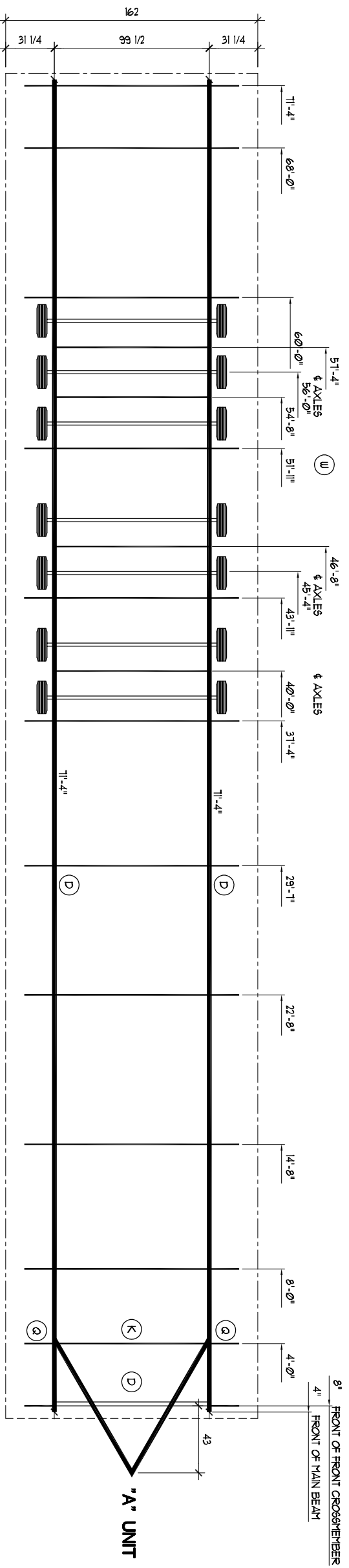
ORIGINAL DRAWING BY : -

SIDEWALL: 4" OR 6" **4" WALLS**

PRODUCT MODEL NO.
 PROMOTIONAL **BREEZE 2.5**

SQ. FT. DATE
 1,944 5-7-18

SHEET REVISED
 1-A2 -



TRANSVERSE CHASSIS
LEGEND

- A - MAIN BEAM - 8" X 6.5 B/F/I
- B - MAIN BEAM - 8" X 9.0 B/F/I
- C - MAIN BEAM - 8" X 10.8 B/F/I
- D - MAIN BEAM - 8" X 12.4 B/F/I
- E - FRONT CROSSMEMBER - 2 GA. - 2 8 1/4" X 100" (H-10-13-6" WIDE)
- F - FRONT CROSSMEMBER - 2 GA. - 2 8 1/4" X 100" (H-10-13-6" WIDE)
- G - FRONT CROSSMEMBER - 2 GA. - 2 8 1/4" X 100" (H-10-13-6" WIDE)
- H - FRONT CROSSMEMBER - 2 GA. - 2 8 1/4" X 100" (H-10-13-6" WIDE)
- I - FRONT CROSSMEMBER - 2 GA. - 2 8 1/4" X 100" (H-10-13-6" WIDE)
- J - FRONT CROSSMEMBER - 2 GA. - 2 8 1/4" X 100" (H-10-13-6" WIDE)
- K - CROSSMEMBER - 1/8" ANGLE 2" X 2" X 99 3/8"
- L - OUTRIGGER - 13 GA. - 1 1/2" X 2" (H-10" WIDE KARSTEN)
- M - OUTRIGGER - 13 GA. - 9 1/4" X 18-30" WIDE KARSTEN
- N - OUTRIGGER - 13 GA. - 9 1/4" X 18-30" WIDE KARSTEN
- O - OUTRIGGER - 13 GA. - 9 1/2" X 10 1/2" (H-10" WIDE GM)
- P - OUTRIGGER - 13 GA. - 8" X 9" (13-6" WIDE)
- R - UNDER CARRIAGE ASSY. - TANDEM AXLE - 1 BRAKING
- S - UNDER CARRIAGE ASSY. - TRIPLE AXLE - 2 BRAKING (I) DLEER
- T - UNDER CARRIAGE ASSY. - QUAD AXLE - 2 BRAKING (I) DLEER
- U - UNDER CARRIAGE ASSY. - QUAD AXLE - 2 BRAKING (I) DLEER
- V - UNDER CARRIAGE ASSY. - QUAD AXLE - 2 BRAKING (I) DLEER
- W - UNDER CARRIAGE ASSY. - SEXTPL AXLE - 2 BRAKING (I) DLEER
- X - MOUNTING ANGLE - DETAIL PER STRUCT. DWG. 92.00 "C"
- Y - AIR RETURN CROSSOVER MEMBER - 1/8" X 2" X 2" STEEL ANGLE

NOTES:
1. CHASSIS AND HITCH DETAILS PER STRUCT. DWG. 92.00
2. FLOOR OVERHANG DETAIL PER STRUCT. DWG. 93.02-B
3. GW HITCH PER 92.06 / KARSTEN HITCH PER 208.20
NOTE: TRIPLE WIDE CENTER SECTIONS AND 4:12 30 WIDES MUST HAVE UNDER-SLUNG AXLES AND EQUALIZERS

ALL HOUSES WITH 12" BEAM MUST HAVE UNDER-SLUNG AXLES.
HOUSES WITH 9" SIDEWALLS AND 2X8 FLOOR JOISTS WITH 10" BEAM AND EQUALIZERS MUST HAVE UNDER-SLUNG AXLES.

Manufacturing West, Inc.
Albany Division - Plant #972
2445 S.W. PACIFIC BLVD.
ALBANY, OR 97321
Phone (541) 926-8631
Fax (866) 491-6847

DRAWING TITLE
CHASSIS PLAN

ORIGINAL DRAWING BY :
SIDEWALL: 4" OR 6"
4" WALLS

PRODUCT MODEL NO.
PROMOTIONAL **BREEZE 2.5**
SQ. FT. 1,944
DATE 5-7-18

SHEET 1-45
REVISED -

OPT. FLEX INFO

WYES

STD. FLEX DUCT

- 14" FLEX
- 0'-0"
- 12" FLEX
- 25'-0"
- 8" FLEX
- 6" FLEX
- 0'-0"

Manufacturing West, Inc.
 Albany Division - Plant #972
 2445 S.W. PACIFIC BLVD.
 ALBANY, OR 97321
 Phone (541) 926-8631
 Fax (866) 491-6847

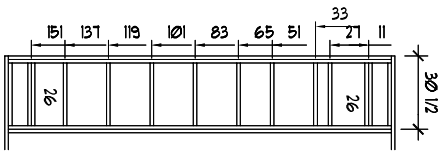
FLOOR & HEAT DUCT

ORIGINAL DRAWING BY :
 SIDEWALL: 4" OR 6"
4" WALLS

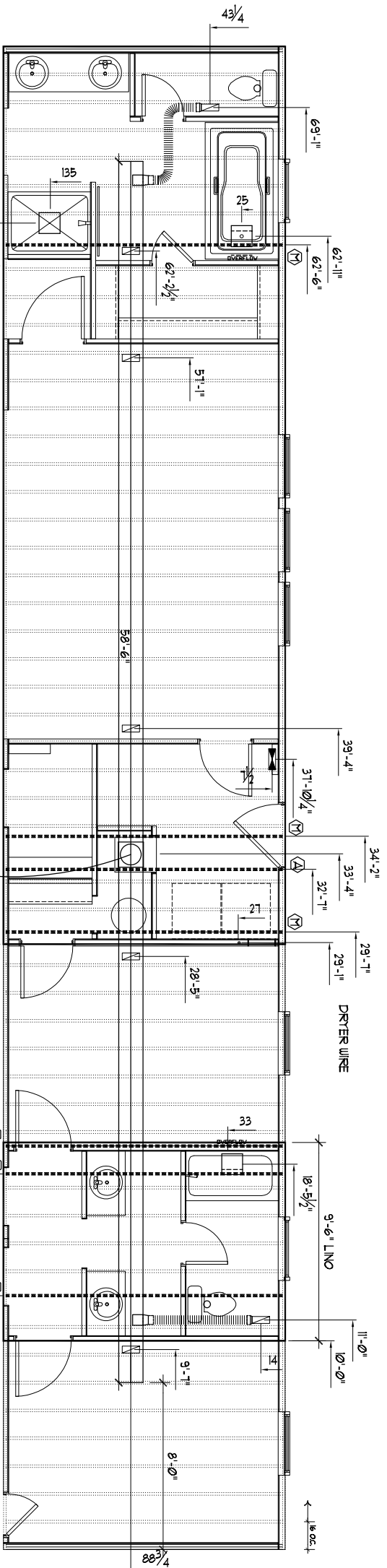
PRODUCT PROMOTIONAL
BREEZE 2.5

MODEL NO.
 DATE 5-7-18

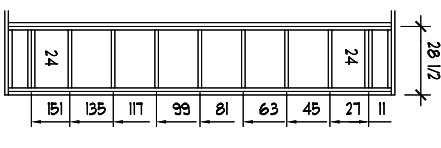
SQ. FT. 1,944
 SHEET 1-A6
 REVISED



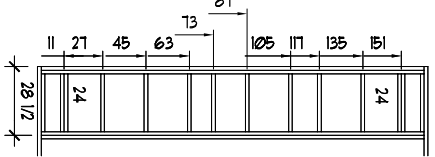
INSET CHASSIS BLOCKING



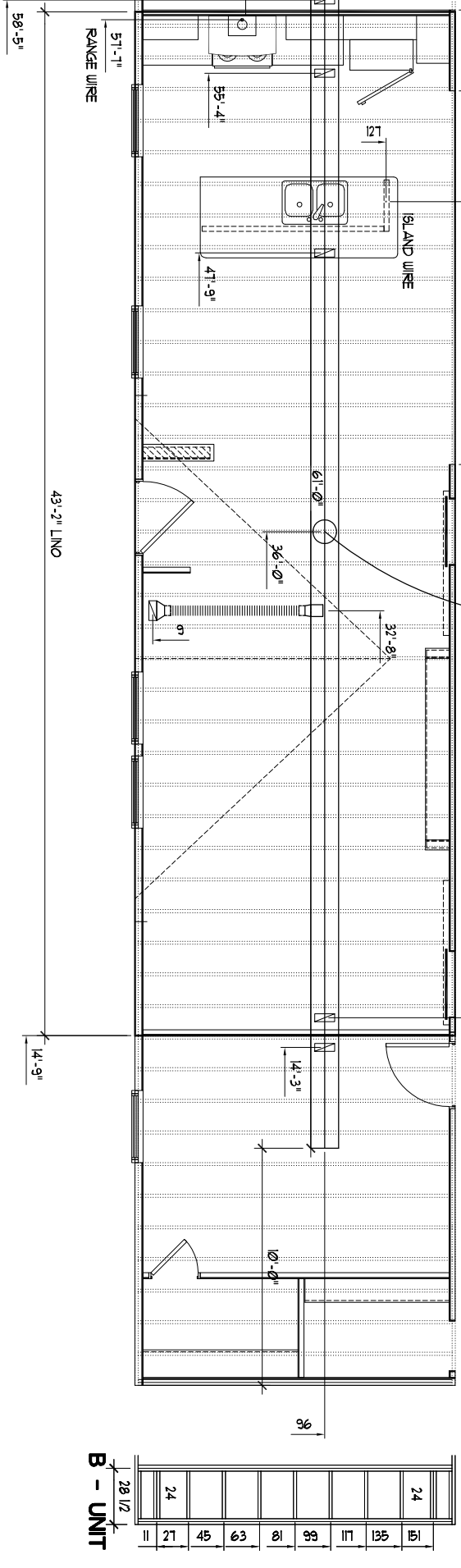
A - UNIT



INSET CHASSIS BLOCKING

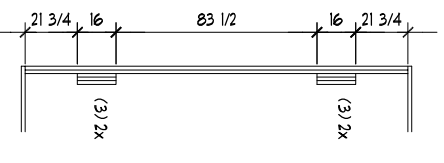


B - UNIT

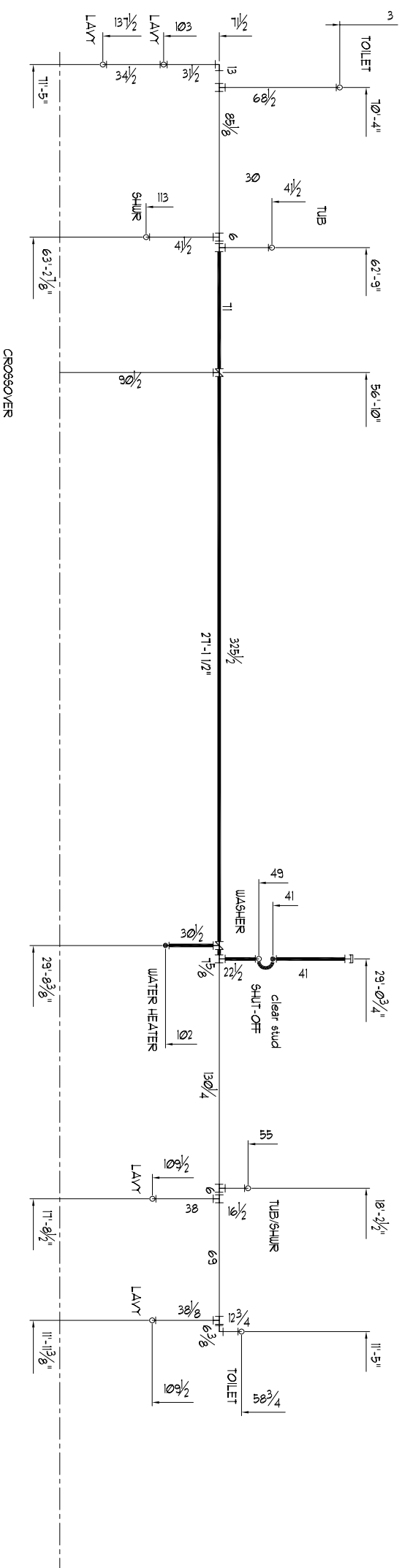


TYPICAL 16" O.C

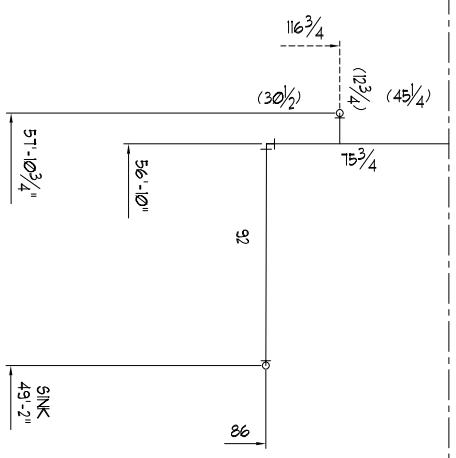
- NOTES:
 • (M) MOVE JOIST (A) ADD JOIST (B) MULTIPLE JOISTS
 • (C) BLOCK PER FC-0.10 A (E) BLOCK PER FC-0.1H E
 • (W) EXTRA RIM NAILS & LAGS AT POSTS (FC-0.16 B/C)



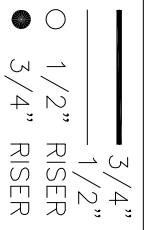
TYPICAL FRAMING



A - UNIT



B - UNIT



PIPE DIMS ARE TO CENTER OF FITTING. ADJUST LENGTH PER FITTING.

Manufacturing West, Inc.
 Albany Division - Plant #972
 2445 S.W. PACIFIC BLVD.
 ALBANY, OR 97321
 Phone (541) 926-8631
 Fax (866) 491-6847

COLD WATER LINES

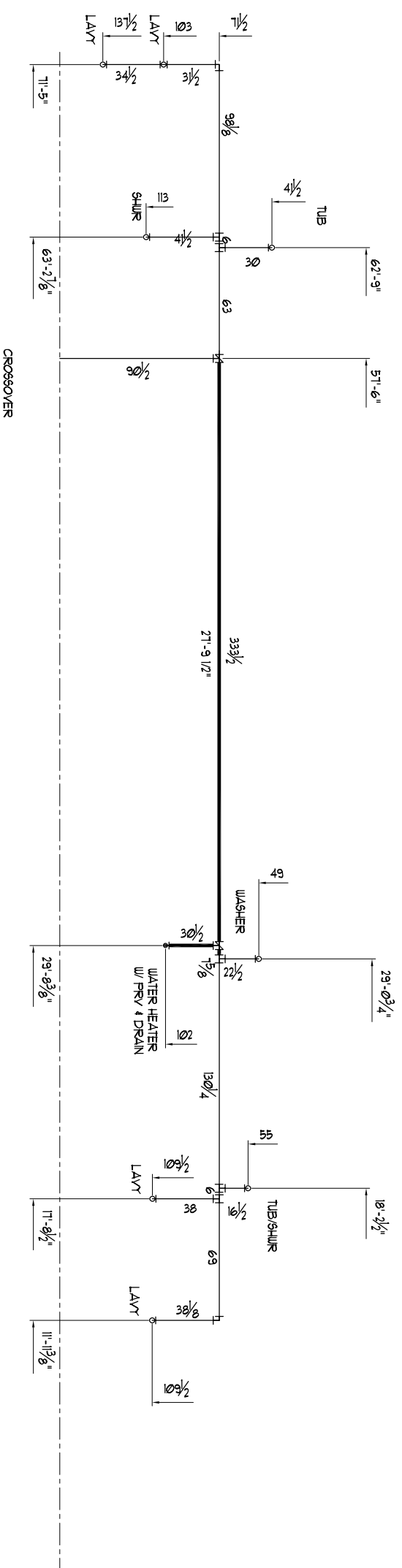
DRAWING TITLE

ORIGINAL DRAWING BY : G. LUND

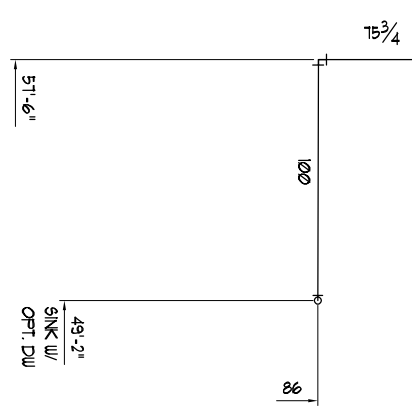
PRODUCT MODEL NO. **BREEZE 2.5**

DATE 5-7-18

SHEET 1-A7-A 7-16-18 GL



A - UNIT



B - UNIT

DRAIN W/ CAP & TIE
 W/ OPT. D.U.L.
 PIPE DIMS ARE TO CENTER OF FITTING. ADJUST LENGTH PER FITTING.

PIPE LEGEND

- 3/4"
- 1/2"
- 1/2" RISER
- 3/4" RISER

Manufacturing West, Inc.
 Albany Division - Plant #972
 2445 S.W. PACIFIC BLVD.
 ALBANY, OR 97321
 Phone (541) 926-8631
 Fax (866) 491-6847

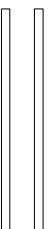
HOT WATER LINES

DRAWING TITLE
 ORIGINAL DRAWING BY :
 SIDEWALL: 4" OR 6"
4" WALLS

PRODUCT MODEL NO.
 PROMOTIONAL **BREEZE 2.5**

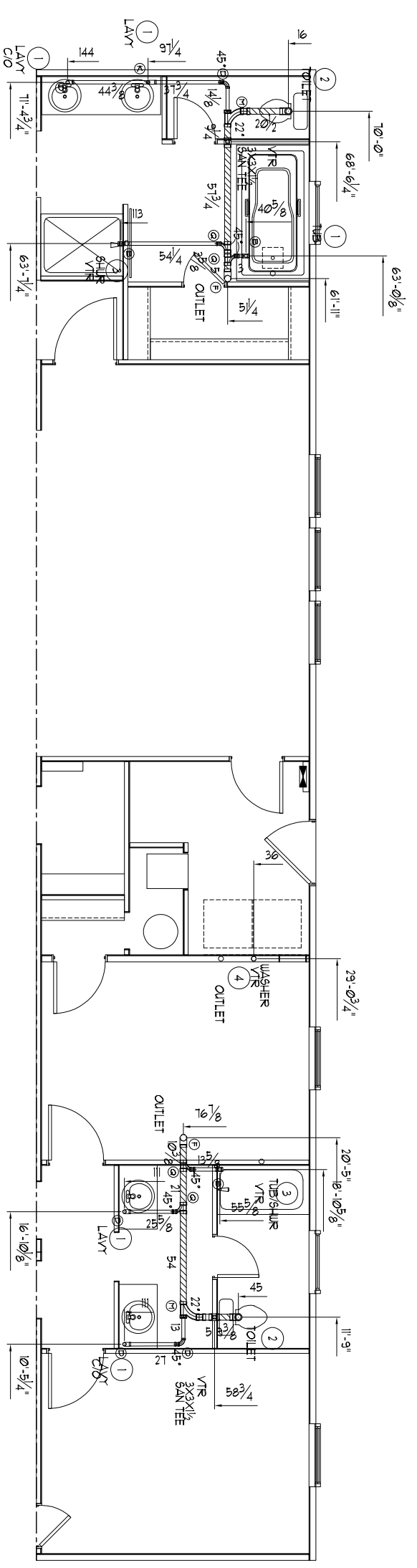
SQ. FT. DATE
 1,944 5-7-18

SHEET SHEET
1-48 REVISED

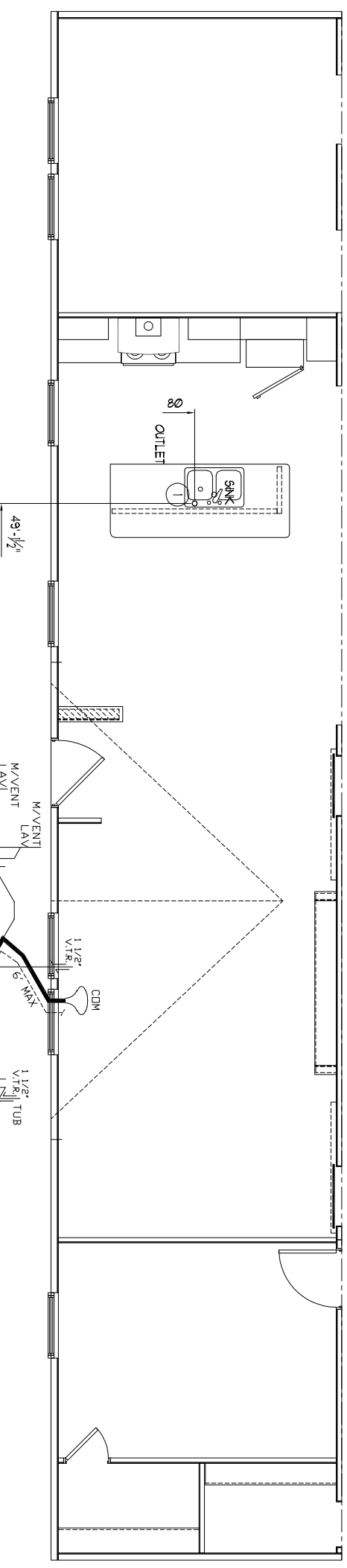


TRANSVERSE PIPE LEGEND
 ===== 1 1/2" PIPE
 ===== 2" PIPE
 zzzzzzzzzzz 3" PIPE

FOUNDATION READY PLG ON 1-B9



A - UNIT

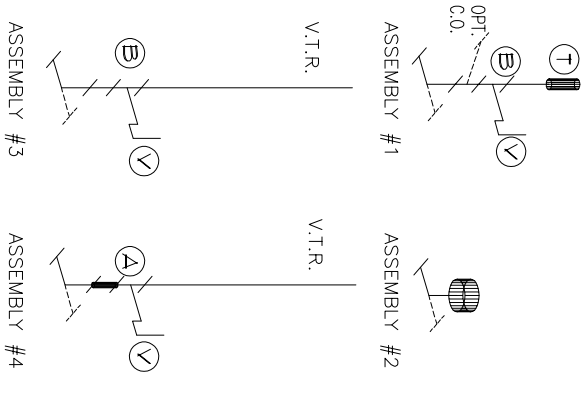


B - UNIT

- SLIP LOOSE FLUENCING
- 3" PIPE - 6'
 - 2" PIPE - 6'
 - 1 1/2" PIPE - 25'
 - FITTINGS PER ISO

LEGEND

ELEVATIONS OF TYPICAL ASSEMBLIES
 1) TRAP ARM CAN BE ROTATED
 2) FITTINGS AT BASE OF VERTICAL PIPE TO BE SHOWN ON PLAN



SYML.	DESCRIPTION
A	2"x1 1/2"x1 1/2" SAN TEE
B	1 1/2" SAN TEE
C	3"x3"x2" SAN TEE
D	1 1/2" 90° XLT ELBOW
E	2" 90° XLT ELBOW
F	3" 90° XLT ELBOW
G	1 1/2" 45° XLT ELBOW
H	1 1/2"x3" PIPE INCREASER
J	2"x3" PIPE INCREASER
K	1 1/2" LTTY SINGLE
L	2" LTTY SINGLE
M	2"x1 1/2"x1 1/2" LTTY SINGLE
N	2"x2"x1 1/2" LTTY SINGLE
O	3"x3"x1 1/2" LTTY SINGLE
P	3"x3"x2" LTTY SINGLE
R	2"x3"x2" LTTY SINGLE
S	2"x3"x2" LTTY SINGLE
T	MECHANICAL VENT
U	2"x1 1/2"x2" LTTY SINGLE
V	1 1/2" F-TRAP CLEANOUT COUPLER
W	CONTINUOUS FITTING

Manufacturing West, Inc.
 Albany Division - Plant #972
 2445 S.W. PACIFIC BLVD.
 ALBANY, OR 97321
 Phone (541) 926-8631
 Fax (866) 491-6847

WASTE LINES PLAN

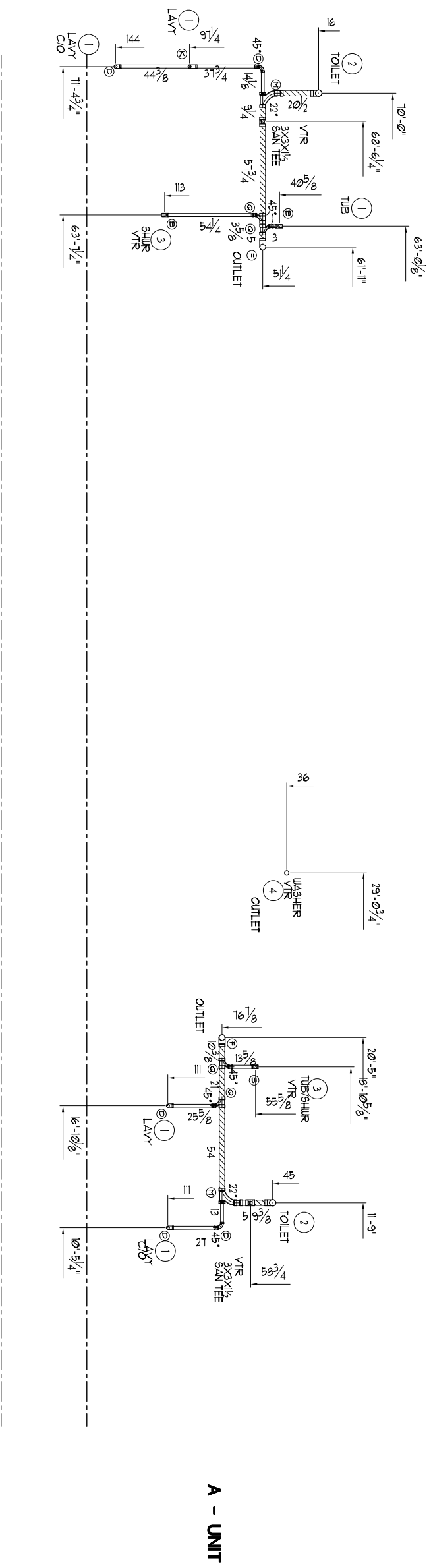
ORIGINAL DRAWING BY :
 SIDEWALL: 4" OR 6" **4" WALLS**

PRODUCT MODEL NO.
 PROMOTIONAL **BREEZE 2.5**

SQ. FT. DATE
 1,944 5-7-18

SHEET SHEET
1-49 REVISED

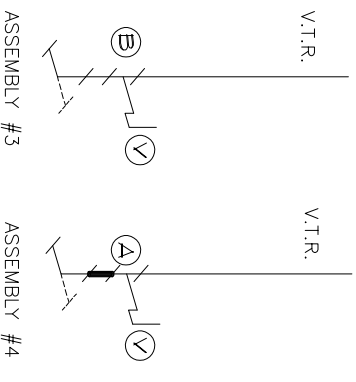
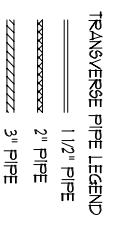
FOUNDATION READY PLG ON 1-B9



- SLIP LOOSE FLUENTS**
- 3" PIPE - 6'
 - 2" PIPE - 6'
 - 1 1/2" PIPE - 25'
 - FITTINGS PER ISO

LEGEND

- ELEVATIONS OF TYPICAL ASSEMBLIES
- 1) TRAP ARM CAN BE ROTATED
 - 2) FITTINGS AT BASE OF VERTICAL PIPE TO BE SHOWN ON PLAN



SYMBOL	DESCRIPTION
A	2"x1 1/2"x1 1/2" SAN TEE
B	1 1/2"x1 1/2" SAN TEE
C	3"x3"x2" SAN TEE
D	1 1/2"x2" 90° XLT ELBOW
E	2" 90° XLT ELBOW
F	3" 90° XLT ELBOW
G	1 1/2"x2" 45° XLT ELBOW
H	1 1/2"x3" PIPE INCREASER
J	2"x3" PIPE INCREASER
K	1 1/2" LTTY SINGLE
L	2" LTTY SINGLE
M	2"x1 1/2"x1/2" LTTY SINGLE
N	2"x2"x1 1/2" LTTY SINGLE
O	3"x3"x1 1/2" LTTY SINGLE
P	3"x3"x2" LTTY SINGLE
R	2"x3"x2" LTTY SINGLE
S	2"x3"x2" LTTY SINGLE
T	MECHANICAL VENT
U	2"x1 1/2"x1 1/2" DBL. FIX. FTG.
V	1 1/2" F-TRAP CLEANOUT COUPLER
W	CONTINUOUS FITTING

Manufacturing West, Inc.
 Albany Division - Plant #972
 2445 S.W. PACIFIC BLVD.
 ALBANY, OR 97321
 Phone (541) 926-8631
 Fax (866) 491-6847

WASTE LINES PLAN

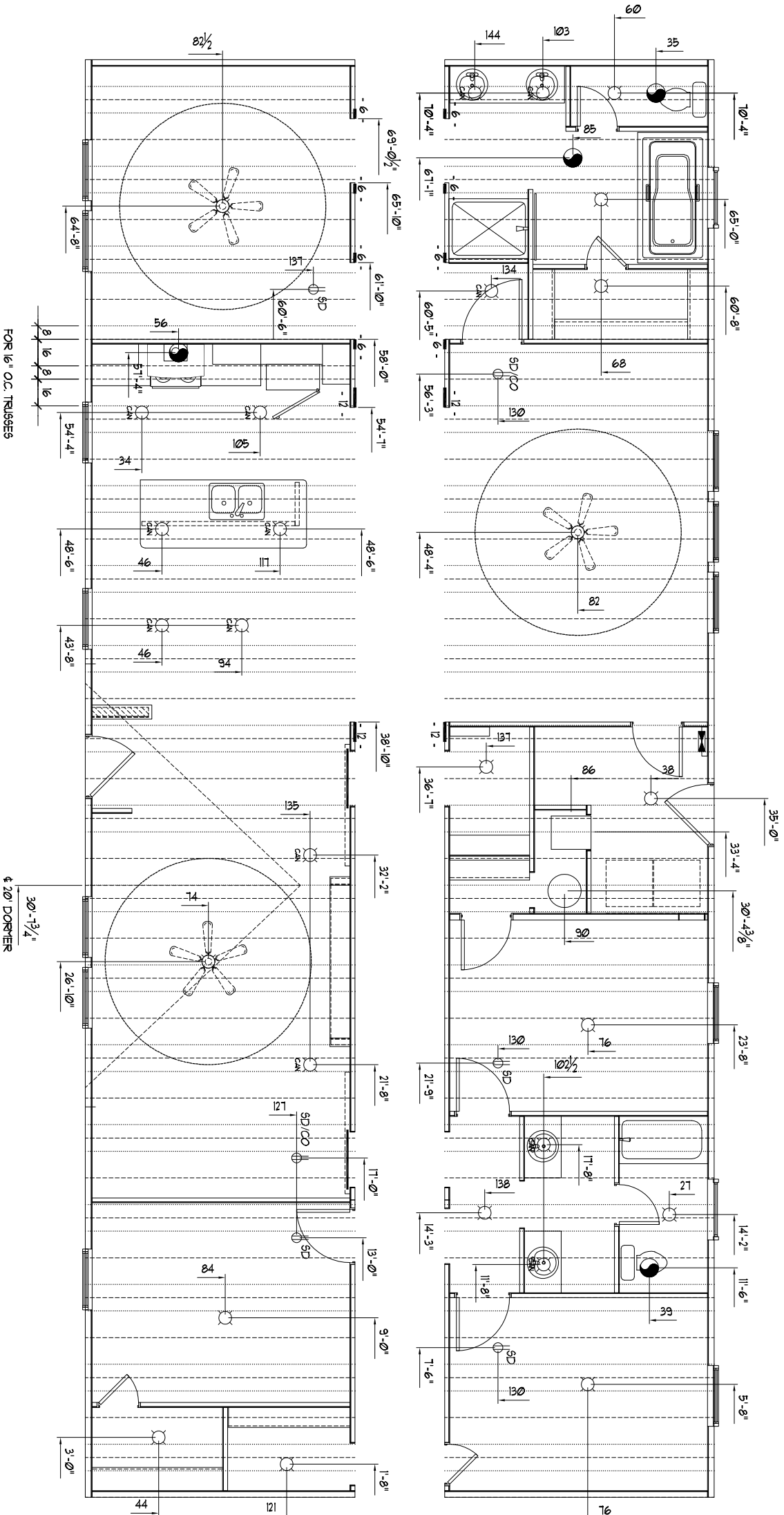
ORIGINAL DRAWING BY : -

SIDEWALL: 4" OR 6" **4" WALLS**

PRODUCT MODEL NO.
 PROMOTIONAL **BREEZE 2.5**

SQ. FT. DATE
 1,944 5-7-18

SHEET REVISED
 1-49



A - UNIT

B - UNIT

FLAT CEILING TRUSS LEGEND

3/12 ROOF PITCH - FLAT	
142" FLOOR	
162" FLOOR	GW668L/TE
8" EAVE/ NO EAVE	GW668/670
14" EAVE/ NO EAVE	GW668/670
CENTER (T.W.)	GW668/670
TRANS. TAG	GW668/670
SINGLE WIDE	GW668/670
180" FLOOR	GW668/670
10" EAVE/ NO EAVE	GW655M/108-SW/1-TE1027
CENTER (T.W.)	GW655M/108-SW/1-TE1027
TRANS. TAG	GW655M/108-SW/1-TE1027
4/12 ROOF PITCH - FLAT	
142" FLOOR	
14" EAVE/NO EAVE	GW142FN
SINGLE WIDE 6" EAVE	GW142FN
162" FLOOR	
14" EAVE/ NO EAVE	
CENTER (T.W.)	
TRANS. TAG	
SINGLE WIDE 6" EAVE	GW76FN
180" FLOOR	GW76FN
10" EAVE/ NO EAVE	GW75M (220HM) HINGED?
CENTER (T.W.)	GW75M (220HM) HINGED?
TRANS. TAG	GW75M (220HM) HINGED?
SINGLE WIDE 6" EAVE	GW75FN-15
5/12 ROOF PITCH - FLAT	
142" FLOOR	
162" FLOOR	
14" EAVE/ NO EAVE	GW554K/-
CENTER (T.W.)	GW570/570C
TRANS. TAG	GW570/570C
180" FLOOR	
10" EAVE/ NO EAVE	
CENTER (T.W.)	
TRANS. TAG	
6/12 ROOF PITCH - FLAT	
142" FLOOR	
14" EAVE/ NO EAVE	GW965H
162" FLOOR	GW965H
14" EAVE/ NO EAVE	GW965M/-
CENTER (T.W.)	GW671/671C
TRANS. TAG	GW671/671C
180" FLOOR	
10" EAVE/ NO EAVE	
CENTER (T.W.)	
TRANS. TAG	



Manufacturing West, Inc.
 Albany Division - Plant #972
 2445 S.W. PACIFIC BLVD.
 ALBANY, OR 97321
 Phone (541) 926-8631
 Fax (866) 491-6847

DRAWING TITLE
ROOF/CEILING DETAILS

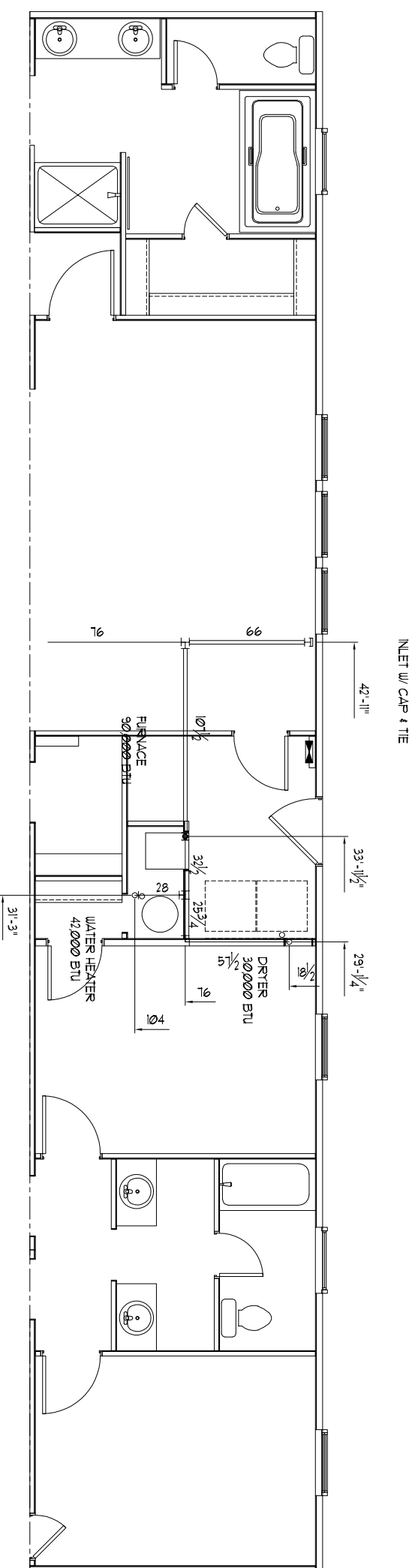
ORIGINAL DRAWING BY : G. LUND

SIDEWALL: 4" OR 6" **4" WALLS**

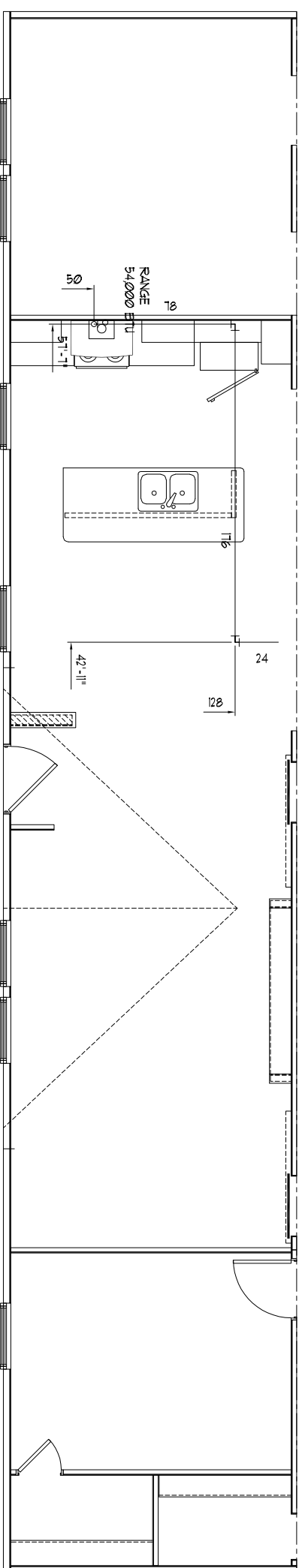
PRODUCT MODEL NO.
 PROMOTIONAL **BREEZE 2.5**

SQ. FT. DATE
 1,944 5-7-18

SHEET REVISED
1-A11 7-13-18 GL



A - UNIT



B - UNIT

CROSSOVER

- OPT. COOKTOP
36,000 BTU
- OPT. OVEN
18,000 BTU
- CROSSOVER
- 3/4" MIN. INLET REQ'D
- PIPE LEGEND
 - 3/4"
 - 1/2"
 - 1/2" RISER
 - 3/4" RISER

Manufacturing West, Inc.
 Albany Division - Plant #972
 2445 S.W. PACIFIC BLVD.
 ALBANY, OR 97321
 Phone (541) 926-8631
 Fax (866) 491-6847

DRAWING TITLE
GAS LINES PLAN

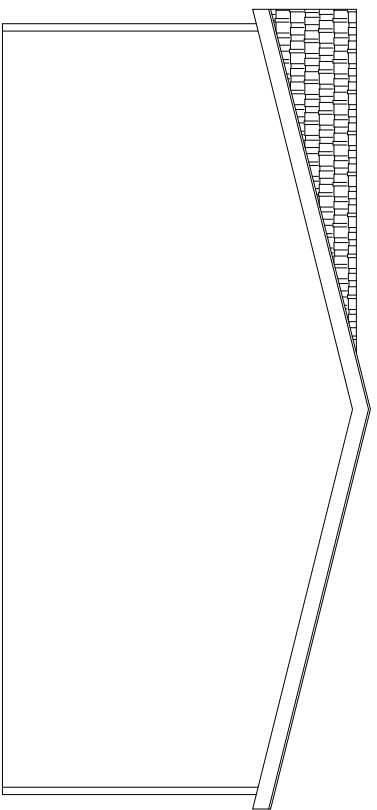
ORIGINAL DRAWING BY :
 SIDEWALL: 4" OR 6"
4" WALLS

PRODUCT MODEL NO.
 PROMOTIONAL **BREEZE 2.5**

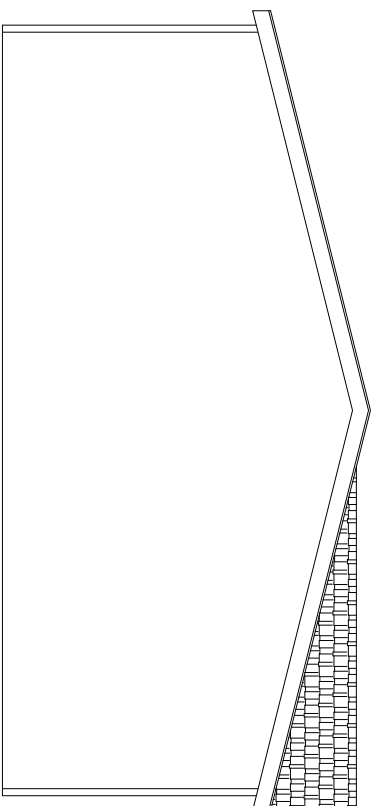
SQ. FT. DATE
 1,944 5-7-18

SHEET SHEET NO. REVISED
 1-A10

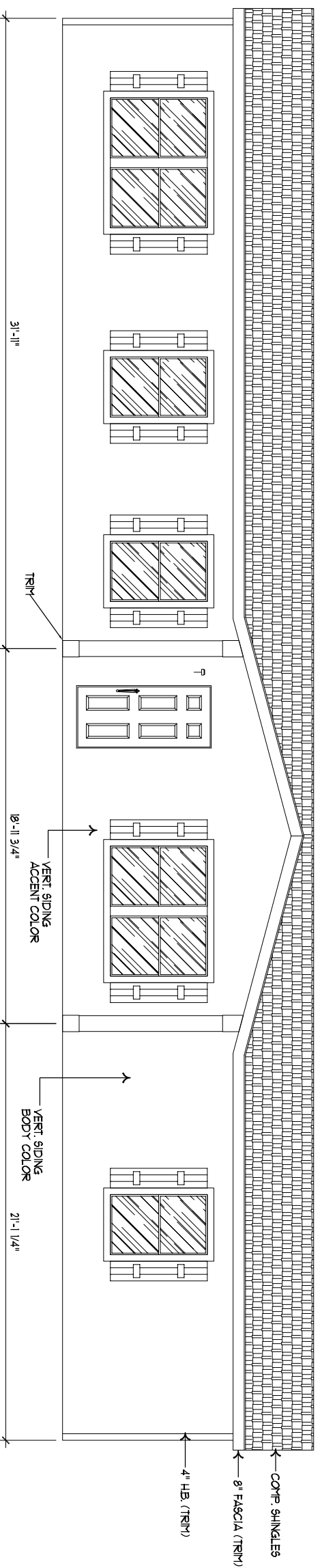
RUN = 50'-0" MAX. BTU = 216,000



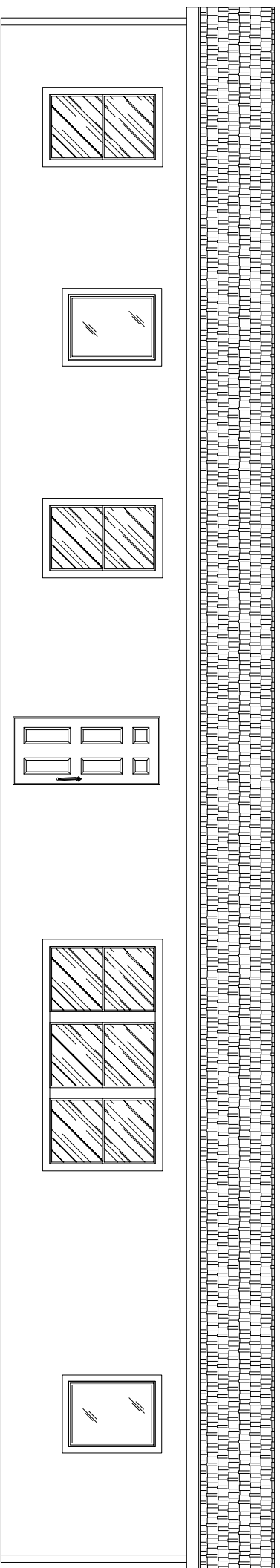
ENDWALL ELEVATION



ENDWALL ELEVATION



FRONT SIDEWALL ELEVATION



REAR SIDEWALL ELEVATION

Manufacturing West, Inc.
 Albany Division - Plant #972
 2445 S.W. PACIFIC BLVD.
 ALBANY, OR 97321
 Phone (541) 926-8631
 Fax (866) 491-6847

DRAWING TITLE
EXTERIOR ELEVATION

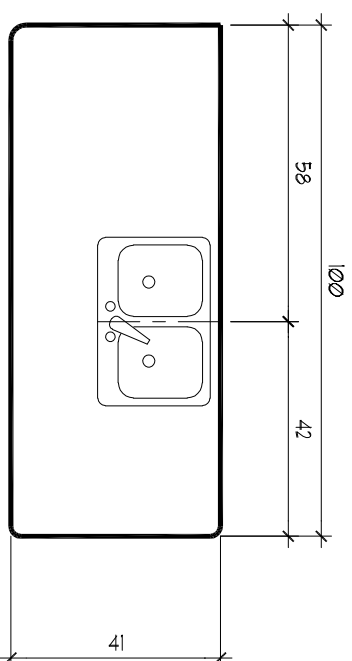
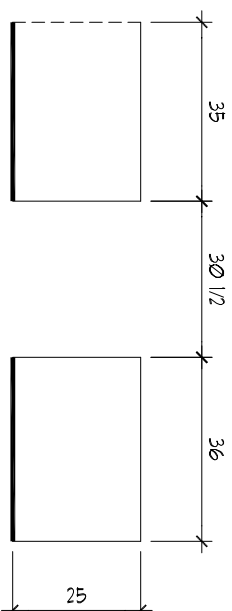
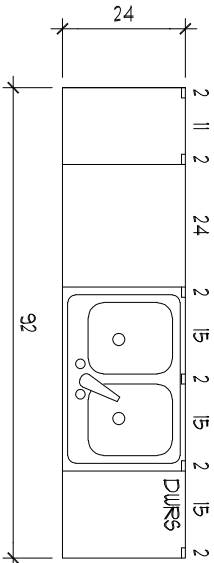
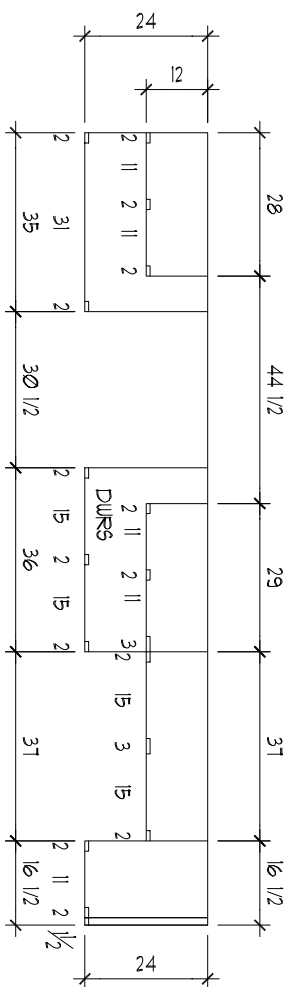
ORIGINAL DRAWING BY : -

SIDEWALL: 4" OR 6" **4" WALLS**

PRODUCT PROMOTIONAL MODEL NO. **BREEZE 2.5**

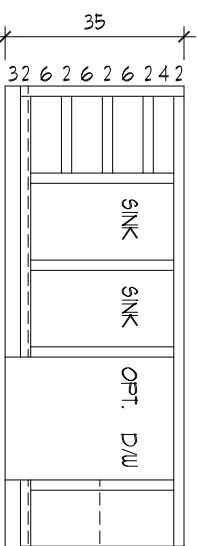
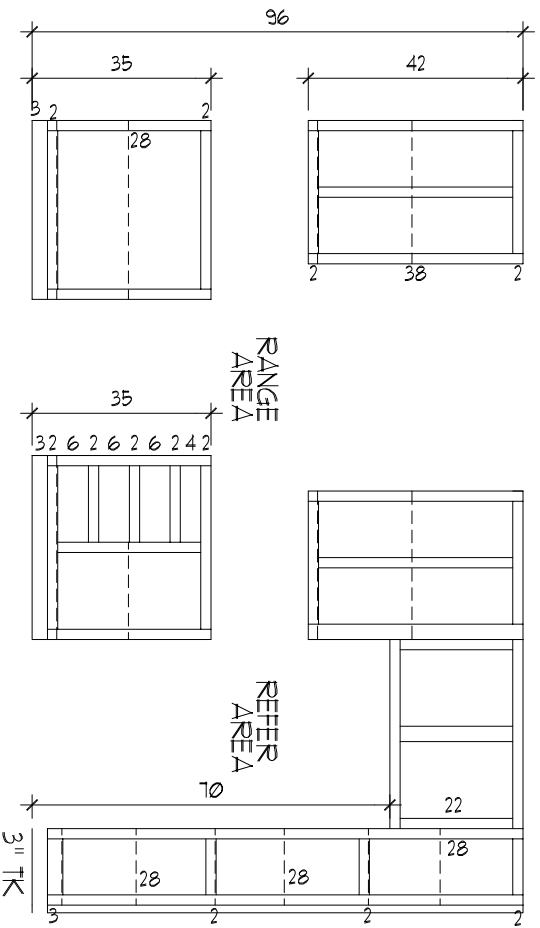
SQ. FT. 1,944 DATE 5-7-18

SHEET 2-4 REVISED -



PLAN VIEW

COUNTERTOPS



ELEVATION

DRAWERS

-	-
-	-
-	-
-	-
-	-

DOORS

-	-
-	-
-	-
-	-
-	-

CABINET TOP LEGEND

- SELF-EDGE
- FULL RETURN / NO BACKING
- - - RAW EDGE
- BACKSPLASH

Manufacturing West, Inc.
 Albany Division - Plant #972
 2445 S.W. PACIFIC BLVD.
 ALBANY, OR 97321
 Phone (541) 926-8631
 Fax (866) 491-6847

KITCHEN CABINETS

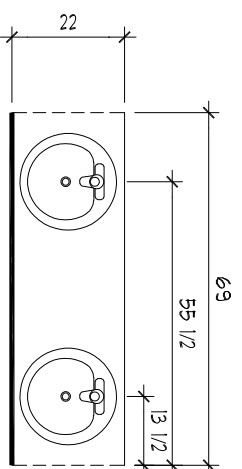
ORIGINAL DRAWING BY : G. LUND

SIDEWALL: 4" OR 6" **4" WALLS**

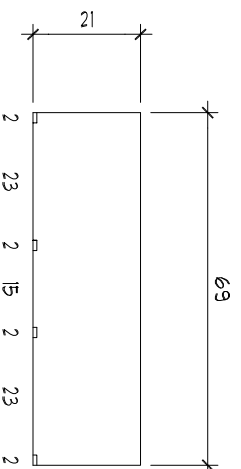
PRODUCT MODEL NO. **BREEZE 2.5**

SO. FT. DATE 5-7-18

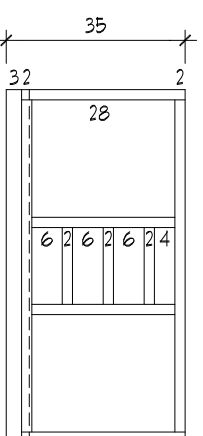
SHEET 5-4 REVISED 2-13-19 GL



COUNTER TOP



PLAN VIEW



ELEVATION

I

COUNTER TOP

PLAN VIEW

ELEVATION

II

ELEVATION

III

① DOORS & DRAWERS	-	② DOORS & DRAWERS	-
-	-	-	-
-	-	-	-
-	-	-	-
-	-	-	-
③ DOORS & DRAWERS	④ DOORS & DRAWERS	-	-
-	-	-	-
-	-	-	-
-	-	-	-
-	-	-	-
-	-	-	-

Manufacturing West, Inc.
Albany Division – Plant #972
2445 S.W. PACIFIC BLVD.
ALBANY, OR 97321
Phone (541) 926-8631
Fax (866) 491-6847

DRAWING TITLE
LAVY CABINETS

ORIGINAL DRAWING BY : G. LUND

SIDEWALL: 4" OR 6" **4" WALLS**

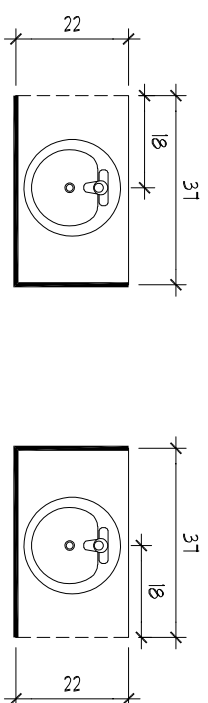
PRODUCT MODEL NO.
PROMOTIONAL **BREEZE 2.5**

SQ. FT. DATE
5-7-18

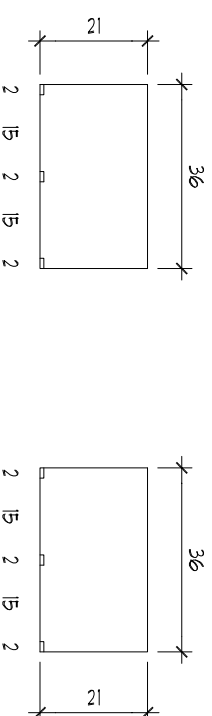
SHEET 7-A REVISED -

ELEVATION

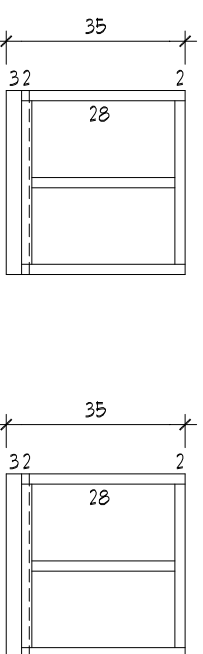
SHEET 7-A



COUNTER TOP

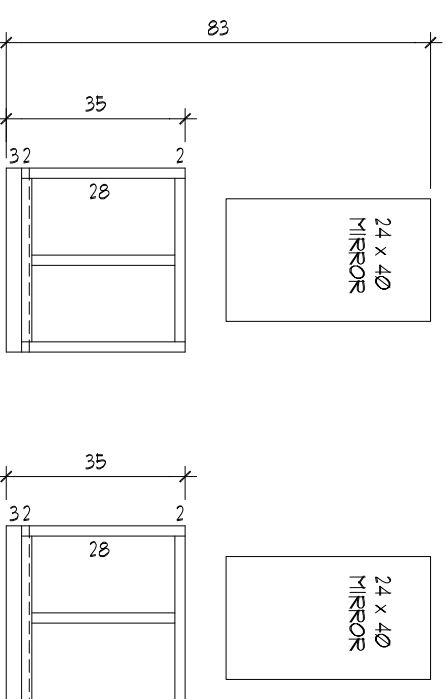
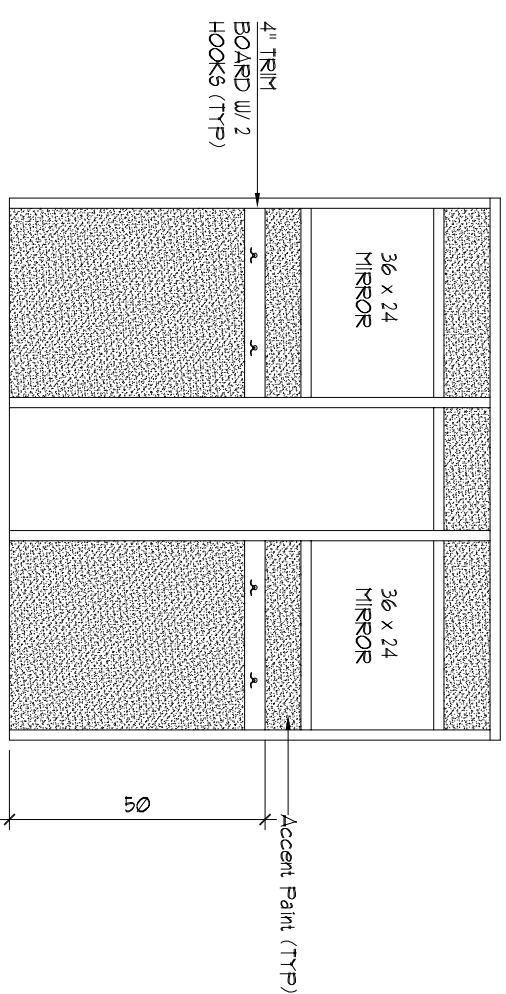


PLAN VIEW



ELEVATION

I



II

I DOORS & DRAWERS **II** DOORS & DRAWERS

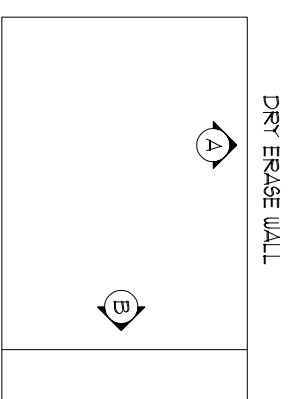
-	-	-	-
-	-	-	-
-	-	-	-
-	-	-	-
-	-	-	-
II	I	II	I
DOORS & DRAWERS	DOORS & DRAWERS	DOORS & DRAWERS	DOORS & DRAWERS
-	-	-	-
-	-	-	-
-	-	-	-
-	-	-	-

Manufacturing West, Inc.
 Albany Division - Plant #972
 2445 S.W. PACIFIC BLVD.
 ALBANY, OR 97321
 Phone (541) 926-8631
 Fax (866) 491-6847

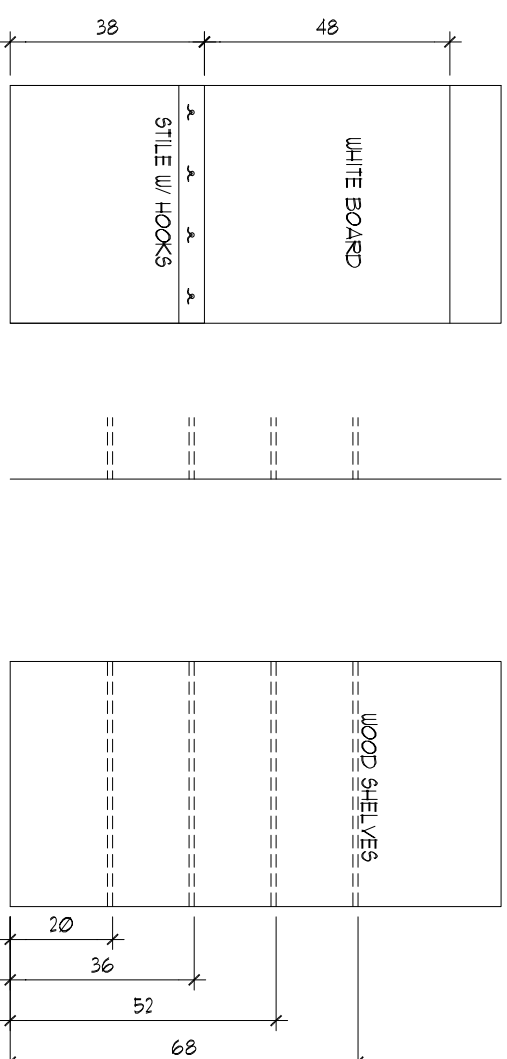
DRAWING TITLE
LAVY CABINETS
 ORIGINAL DRAWING BY : G. LUND
 SIDEWALL: 4" OR 6" **4" WALLS**

PRODUCT	MODEL NO.
PROMOTIONAL	BREEZE 2.5
SQ. FT.	DATE
	5-7-18
SHEET	REVISED
7-B	-

COUNTER TOP



PLAN VIEW



ELEVATION

ELEVATION A

ELEVATION B

① DOORS & DRAWERS ② DOORS & DRAWERS

-	-	-
-	-	-
-	-	-
-	-	-
③ DOORS & DRAWERS	④ DOORS & DRAWERS	-
-	-	-
-	-	-
-	-	-
-	-	-

Manufacturing West, Inc.
 Albany Division - Plant #972
 2445 S.W. PACIFIC BLVD.
 ALBANY, OR 97321
 Phone (541) 926-8631
 Fax (866) 491-6847

DRAWING TITLE
LINEN CABINETS

ORIGINAL DRAWING BY : -

SIDEWALL: 4" OR 6" **4" WALLS**

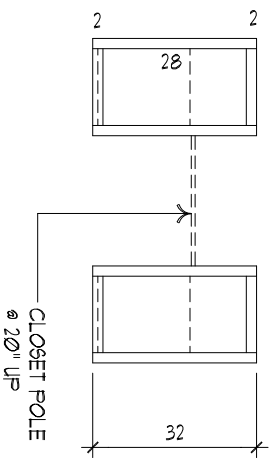
PRODUCT MODEL NO.
 PROMOTIONAL **BREEZE 2.5**

SQ. FT. DATE
 5-7-18

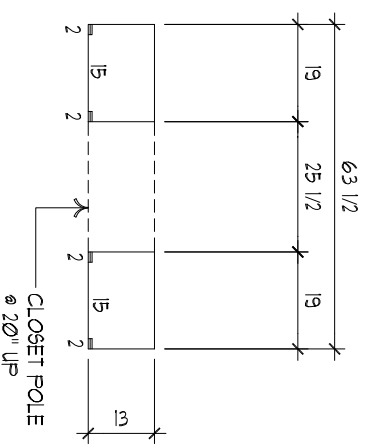
SHEET 8-4 REVISED -

①

②



ELEVATION



PLAN OF CABINETS

COUNTER TOP

PLAN VIEW

ELEVATION

Manufacturing West, Inc.
 Albany Division - Plant #972
 2445 S.W. PACIFIC BLVD.
 ALBANY, OR 97321
 Phone (541) 926-8631
 Fax (866) 491-6847

DRAWING TITLE
UTILITY CABINETS

ORIGINAL DRAWING BY : -

SIDEWALL: 4" OR 6" **4" WALLS**

PRODUCT MODEL NO.
 PROMOTIONAL **BREEZE 2.5**

SQ. FT. DATE
 5-7-18

SHEET 9-4 REVISED -

I DOORS & DRAWERS II DOORS & DRAWERS

- - - - -

- - - - -

- - - - -

III DOORS & DRAWERS IV DOORS & DRAWERS

- - - - -

- - - - -

- - - - -

- - - - -

- - - - -

- - - - -

- - - - -

- - - - -

- - - - -

- - - - -

- - - - -

- - - - -

- - - - -

- - - - -

- - - - -

- - - - -

- - - - -

- - - - -

- - - - -

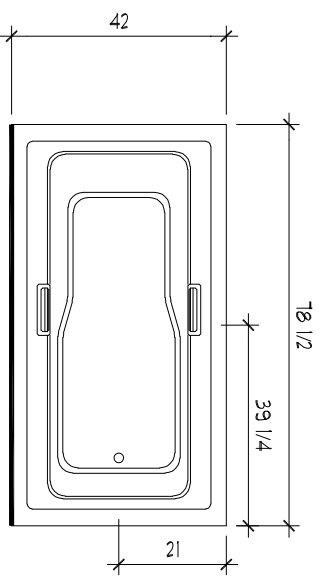
- - - - -

- - - - -

- - - - -

- - - - -

- - - - -



Manufacturing West, Inc.
 Albany Division - Plant #972
 2445 S.W. PACIFIC BLVD.
 ALBANY, OR 97321
 Phone (541) 926-8631
 Fax (866) 491-6847

DRAWING TITLE
TUB DECK

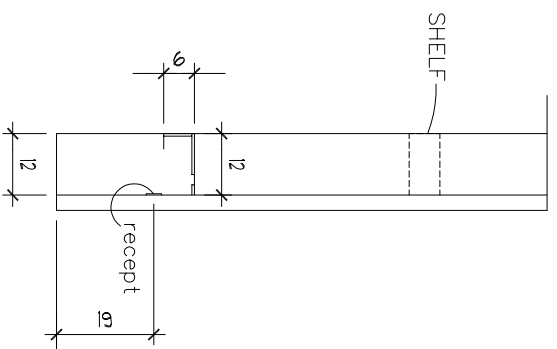
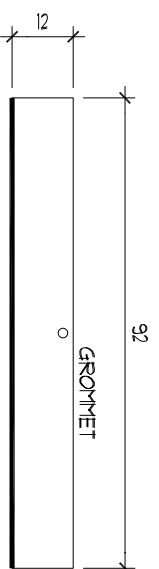
ORIGINAL DRAWING BY : G. LUND

SIDEWALL: 4" OR 6" **4" WALLS**

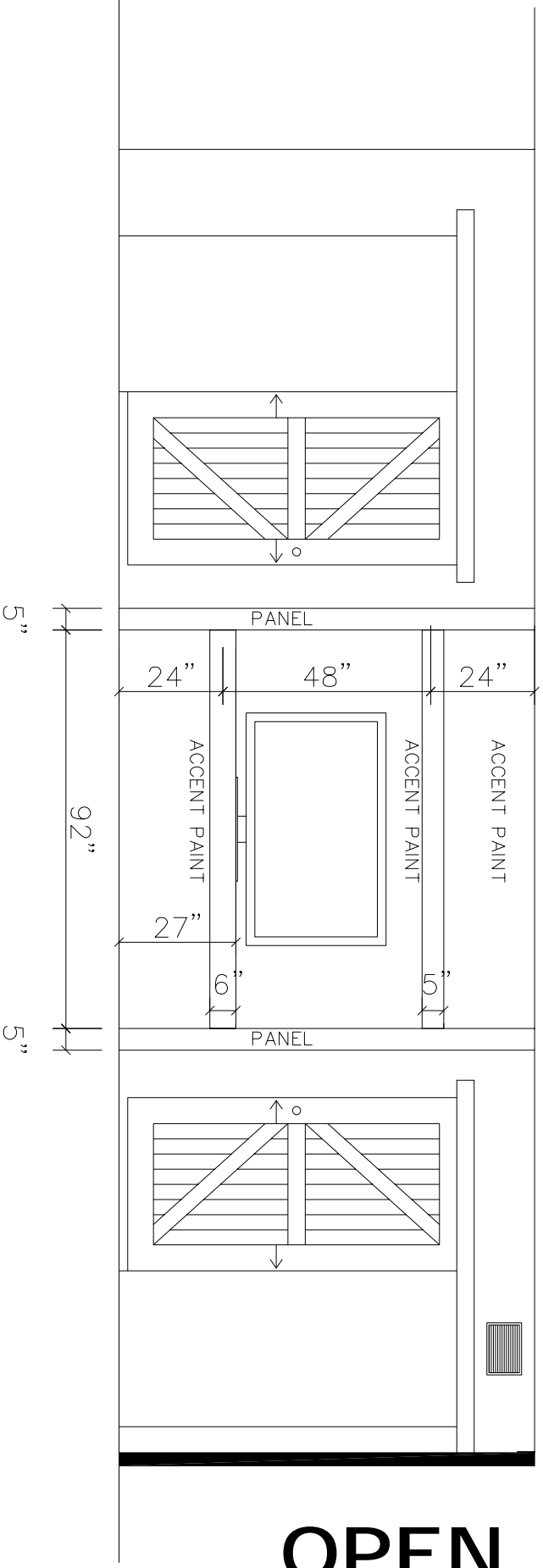
PRODUCT MODEL NO.
 PROMOTIONAL **BREEZE 2.5**

SQ. FT. DATE
 5-7-18

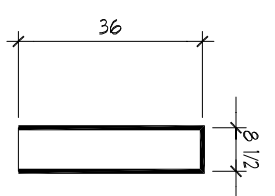
SHEET 11-A REVISED -



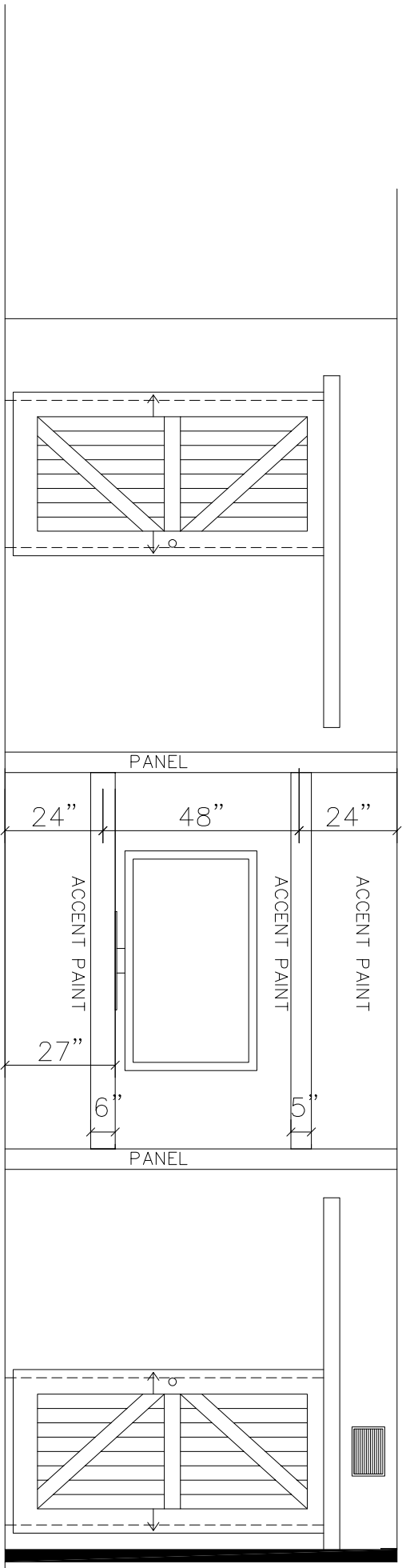
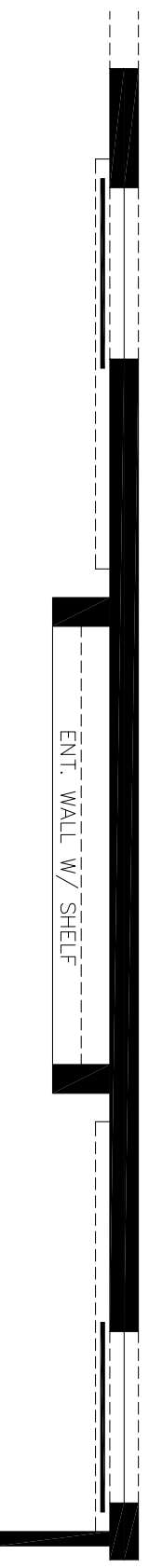
I



OPEN



ENTRY



CLOSED

II

Manufacturing West, Inc.
Albany Division - Plant #972
2445 S.W. PACIFIC BLVD.
ALBANY, OR 97321
Phone (541) 926-8631
Fax (866) 491-6847

DRAWING TITLE
ENTERTAINMENT CTR.
ORIGINAL DRAWING BY : G. LUND

SIDEWALL: 4" OR 6" **4" WALLS**

PRODUCT MODEL NO.
PROMOTIONAL **BREEZE 2.5**

SO. FT. DATE
5-7-18

SHEET 12-4 REVISED 2-13-19 GL