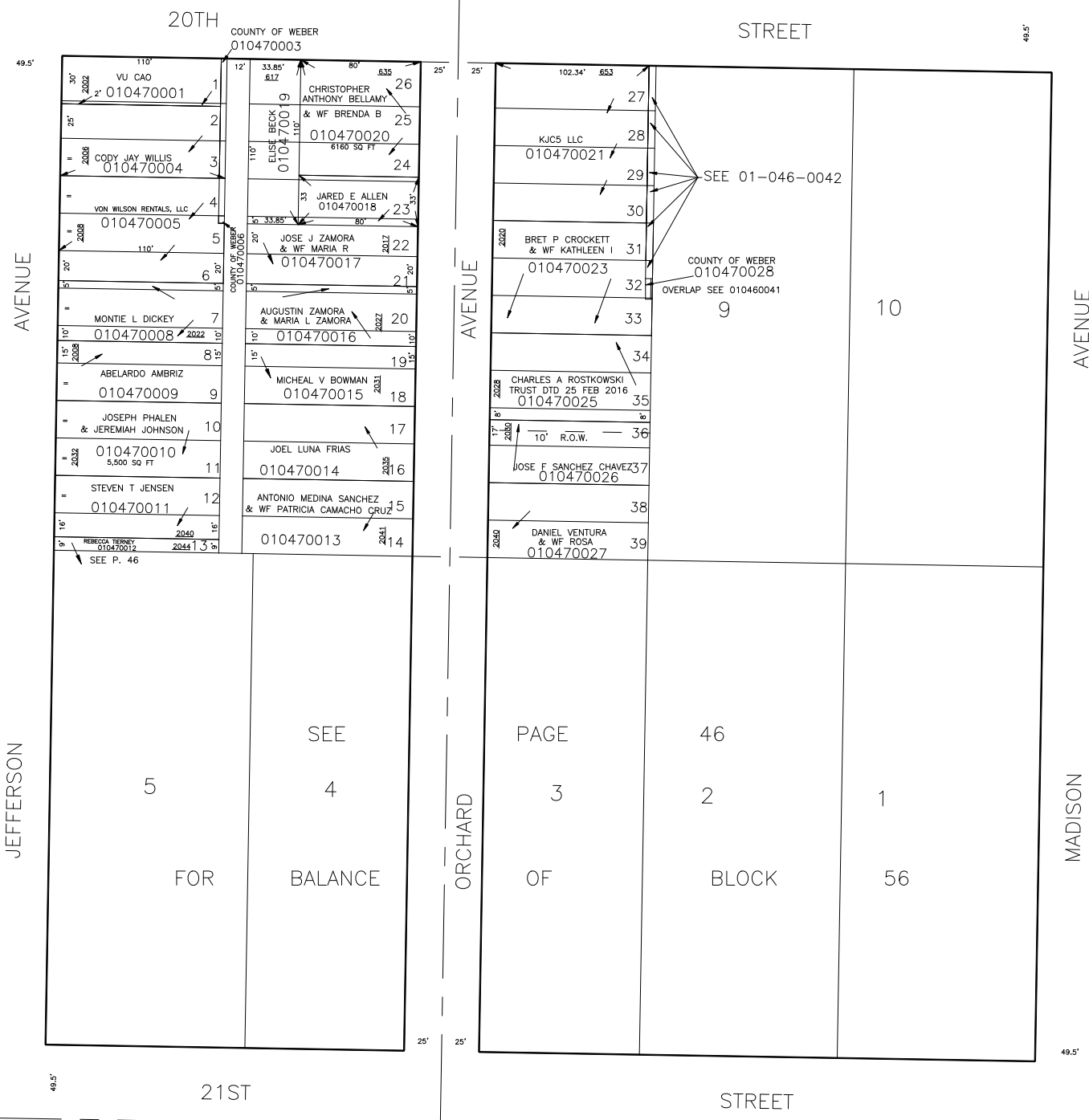


BLOCK 56 PLAT A

DANKOWSKÉ'S CENTRAL SUBDIVISION OF LOTS 6, 7 & 8

IN OGDEN CITY
SCALE: 1" = 50'

TAXING UNIT: 25



JEFFERSON AVENUE

ORCHARD AVENUE

MADISON AVENUE

20TH STREET

STREET

21ST STREET

STREET

JEFFERSON

ORCHARD

MADISON

5

SEE

4

BALANCE

FOR

PAGE

3

OF

46

2

BLOCK

1

56

STREET

NOTE : OGDEN CITY ENG. DEPT. DATA SHOWS EACH LOT AS BEING 132.34' x 330'