

SCALE	1" = 40'
DATE	12-5-2019
DESIGN	WJS
DRAWN	WJS
CHECKED	TJM
DWG.	811-2327 - WADSWAN 1801 - 5 LOT AT POLE PATCH DESIGN DWG 3-LOT SUBDIVISION.DWG

REVISIONS	DESCRIPTION
DATE	

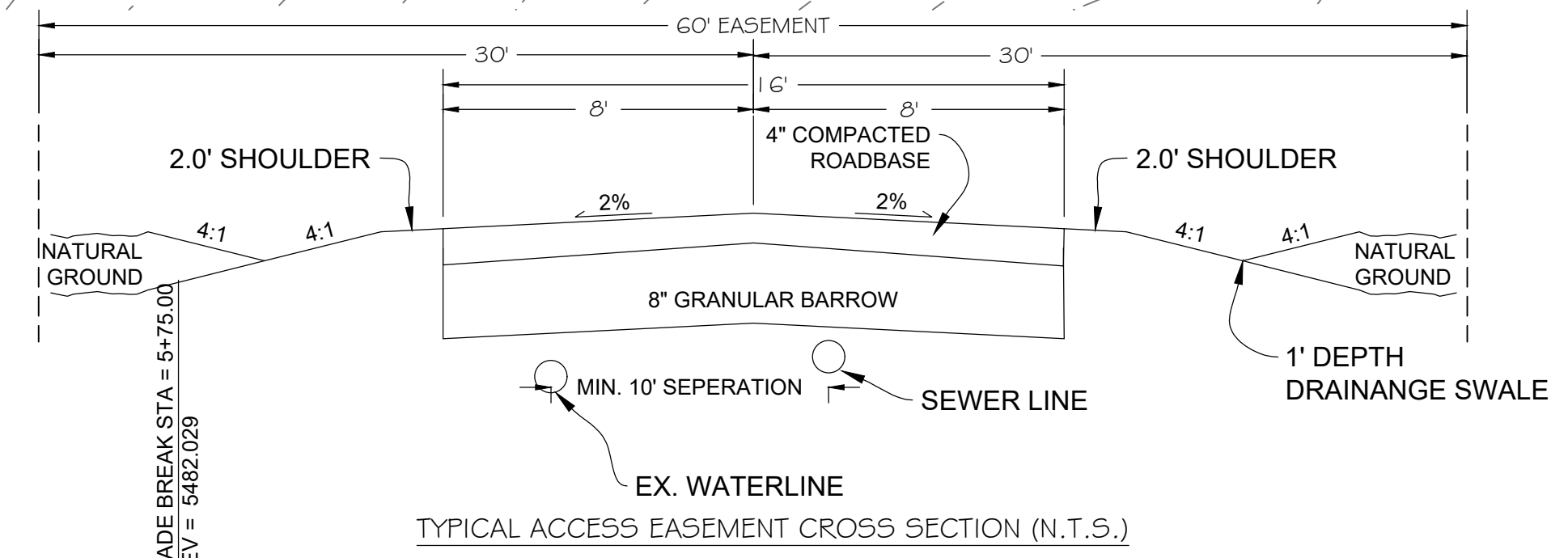
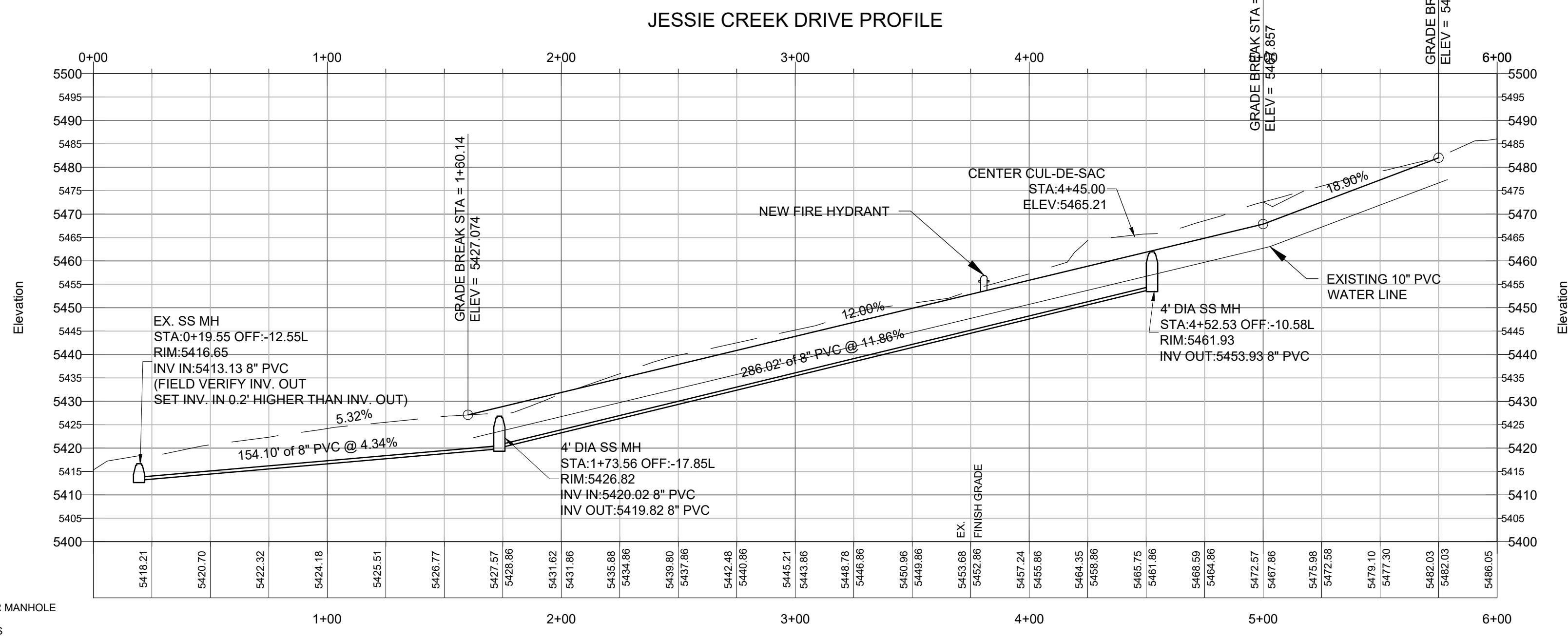
PLAN AND PROFILE
 POLE PATCH PHASE 3
 JESSIE CREEK DRIVE
 WEBER COUNTY, UTAH

Know what's below. 811
Call 811 before you dig.
BLUE STAKES OF UTAH
 UTILITY NOTIFICATION CENTER, INC.
www.bluestakes.org
 1-800-662-4111

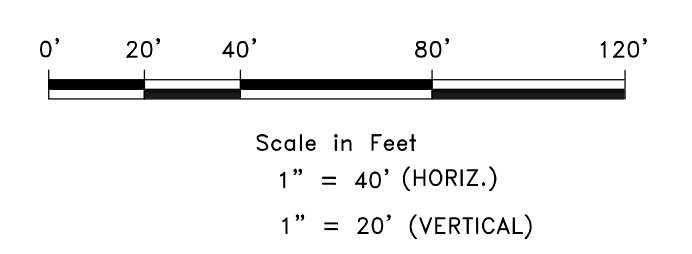
UTILITY DISCLAIMER

THE CONTRACTOR IS SPECIFICALLY CAUTIONED THAT EXISTING UNDERGROUND UTILITIES AND IMPROVEMENTS ARE SHOWN IN THEIR APPROXIMATE LOCATIONS BASED UPON RECORD INFORMATION AVAILABLE AT THE TIME OF PREPARATION OF PLANS. LOCATIONS MAY NOT HAVE BEEN VERIFIED IN THE FIELD AND NO GUARANTEE IS MADE AS TO ACCURACY OR COMPLETENESS OF THE INFORMATION SHOWN. IT SHALL BE RESPONSIBILITY OF THE CONTRACTOR TO DETERMINE THE EXISTENCE AND LOCATION OF THOSE UTILITIES SHOWN ON THESE PLANS OR INDICATED IN THE FIELD BY LOCATING SERVICES. ANY ADDITIONAL COSTS INCURRED AS A RESULT OF CONTRACTOR'S FAILURE TO VERIFY LOCATIONS OF EXISTING UTILITIES PRIOR TO BEGINNING OF CONSTRUCTION IN THEIR VICINITY SHALL BE BORNE BY THE CONTRACTOR AND ASSUMED INCLUDED IN THE CONTRACT.

LEGEND	
	BOUNDARY LINE
	ADJOINER LINE
	SETBACK LINE
	PUE LINE
	CENTER LINE
	EX. FENCE LINE
	SEWER LINE
	STORM DRAIN LINE
	WATER LINE
	IRRIGATION WATER LINE
	EX. GAS
	FIRE HYDRANT
	WATER METER
	EX FIBER OPTIC
	SANITARY SEWER MANHOLE
	UTILITY LATERALS
	EX POWER



ALL ROAD IMPROVEMENTS TO CONFORM TO CURRENT WEBER COUNTY STANDARDS AND SPECIFICATIONS
 SANITARY SEWER AND CULINARY WATER IMPROVEMENTS TO CONFORM TO PLEASANT VIEW CITY'S STANDARDS AND SPECIFICATIONS



GARDNER ENGINEERING
 CIVIL - LAND PLANNING
 MUNICIPAL - LAND SURVEYING
 5150 SOUTH 375 EAST OGDEN, UT
 OFFICE: 801-476-0202 FAX: 801-476-0066

CE1-01