

1963 DED PLAT

RIVER VALLEY SUBDIVISION NO.2

PART OF WEST HALF OF SECTION 7, T5N, R1W, S.L.B. & M., U.S. SURVEY

RIVERDALE CITY, WEBER COUNTY, UTAH

OCTOBER 1961

RIVERDALE CITY RECORDER

BOUNDARY DESCRIPTION

State of Utah }
 County of Weber } s.s.
 I hereby certify that this plat of River Valley Subdivision No.2 and the dedication of streets and public utility easements as shown hereon was accepted by the City Council of Riverdale City, Utah, on this 20th day of July, 1961.
 In witness thereof I have set my hand and affixed the Seal of Riverdale City, Utah.

Part of the West Half of Section 7, T5N, R1W, S.L.B. & M. U.S. Survey. Beginning at a point South 351.8 feet and S 87°10'30"E 1029.11 feet from the N.W. Corner of the S.W. 1/4 of Section 7, running thence S 87°10'30"E 238.0 feet, thence N 03°13'E 640.42 feet, thence N 87°10'30"W 145.0 feet, thence N 2°49'30"E 67.64 feet, thence N 87°10'30"W 131.77 feet, thence S 2°49'30"W 700 feet, thence S 87°10'30"E 38.76 feet, thence S 3°13'W 638.06 feet to the point of beginning, excluding 1.0 foot holding strips at the East and West ends of 4375' South Street.

Martha P. Davis
 Riverdale City Recorder

OWNER'S DEDICATION

WE, GARY W. RASMUSSEN & WIFE ANNA MAE RASMUSSEN, owners of the above described tract of land, hereby set apart and subdivide the same into lots and streets as shown on this plat and name said tract RIVER VALLEY SUBDIVISION No.2 and hereby dedicate grant and convey to Riverdale City, Weber County, Utah all those parts or portions of said tract of land designated as streets hereon, the same to be used as public thoroughfares forever, and also dedicates to Riverdale City those certain strips as easements for public utility purposes as shown hereon, the same to be used for the installation, maintenance, and operation of public utility service lines as may be authorized by Riverdale City.

Signed this 6th day of MARCH, 1963.

Gary W. Rasmussen & wif Anna Mae Rasmussen

RIVERDALE CITY COUNCIL

This is to certify that this plat of River Valley Subdivision No.2 and the dedicated Streets as shown are hereby accepted by the Mayor and City of Riverdale City, Utah on this 20th day of July, 1961.

Attest: Martha P. Davis
 Riverdale City Recorder

J. Edwin Anderson
 Mayor

RIVERDALE CITY PLANNING COMMISSION

This is to certify that this plat of River Valley Subdivision No.2 has been approved by the Riverdale City Planning Commission.
 Signed this 2nd day of May, 1961.

Alvander Carlson
 Chairman

RIVERDALE CITY ENGINEER'S CERTIFICATE

This is to certify that this plat of River Valley Subdivision No.2 has been approved by the Riverdale City Engineering Department.
 Signed this 11th day of July, 1961.

W. H. Lembleton
 Riverdale City Engineer

ACKNOWLEDGEMENT

State of Utah }
 County of Weber } s.s.
 On this 6th day of MARCH, 1963 personally appeared before me Gary W. Rasmussen and wife Anna Mae Rasmussen signers of the above instrument who duly acknowledged to me that they executed the same.

Law M. Butts
 Notary Public

Opden, Utah
 Residence

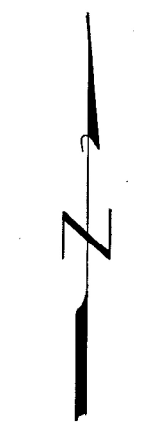
November 9, 1965
 Commission Expires

ENGINEER'S CERTIFICATE

I, J. Dean Hill, a registered professional Engineer and Land Surveyor in the State of Utah, license No. 2266, do hereby certify that this plat of River Valley Subdivision No.2 in Riverdale City, Weber County, Utah, has been correctly drawn to the designated scale and is a true and correct representation of the foregoing description of lands included in said Subdivision, based on data compiled from the records in the Weber County Recorders Office and of a survey made on the ground.

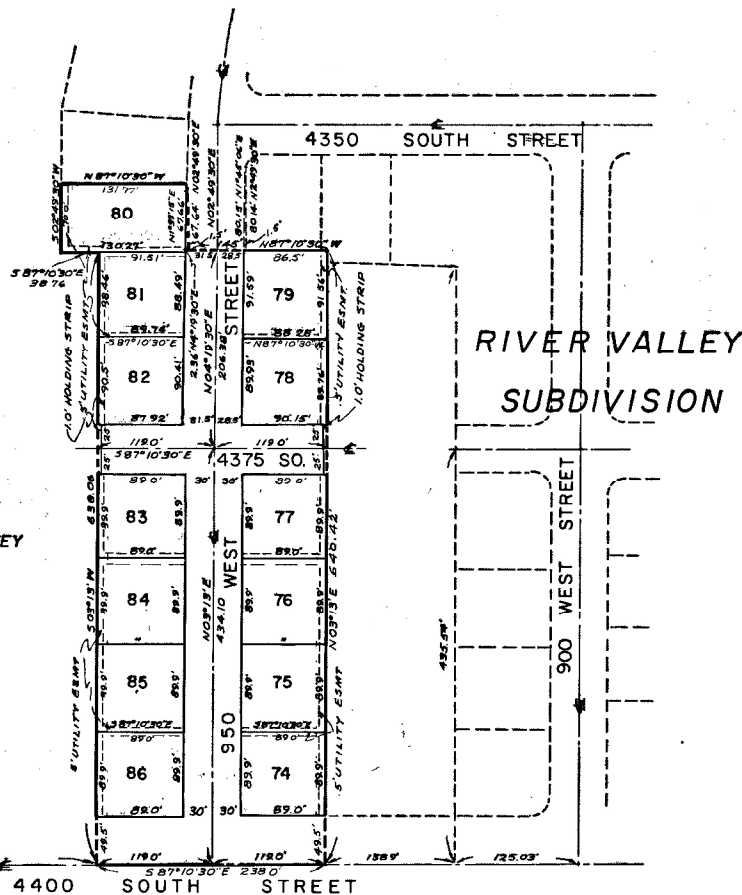
Signed this 8th day of FEBRUARY, 1962.

J. Dean Hill State License No. 2266



SCALE 1"=100'

N.W. CORNER S.W. 1/4
 Section 7 T.5N. R.1W.
 S.L.B. & M. U.S. SURVEY

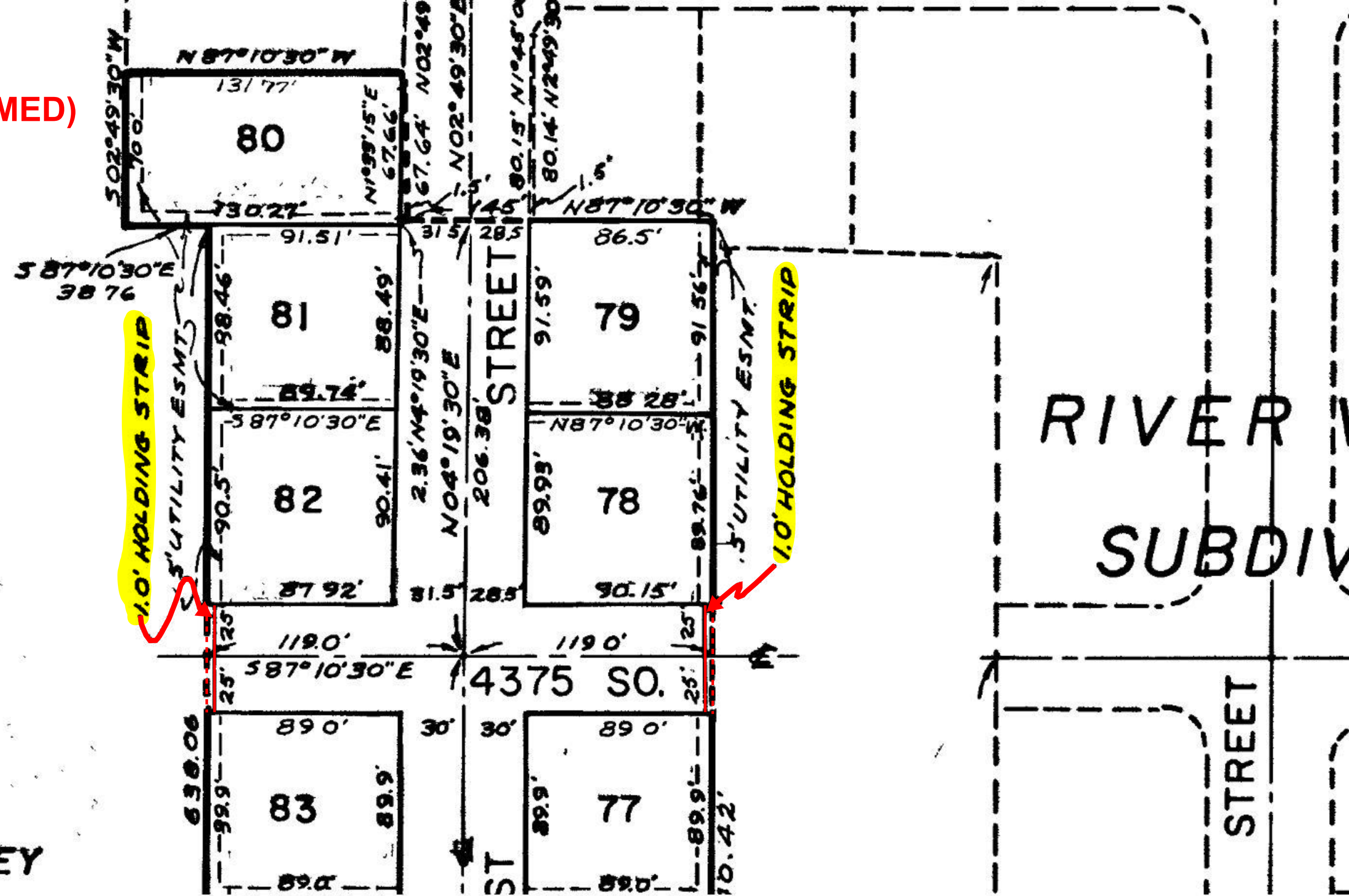


CORRECTED TO 1030.5'
 BY AFFIDAVIT RECORDED
 IN BOOK 762, P. 514.

398230 \$ 7.80
 STATE OF UTAH }
 COUNTY OF WEBER } s.s.
 FILED AND RECORDED FOR
 GARY W. RASMUSSEN
 MAR 13 4 05 PM '63
 IN BOOK 13 OF PLATS
 PAGE 27
 RUTH FAMES OLSEN
 COUNTY RECORDER
 By Sullivan & Peterson

SCALE 1" = 100'

1963 DED PLAT (ZOOMED)



W. CORNER S.W. 1/4
 Section 7 T.5N. R.1W.
 S.L.B. & M. U.S. SURVEY

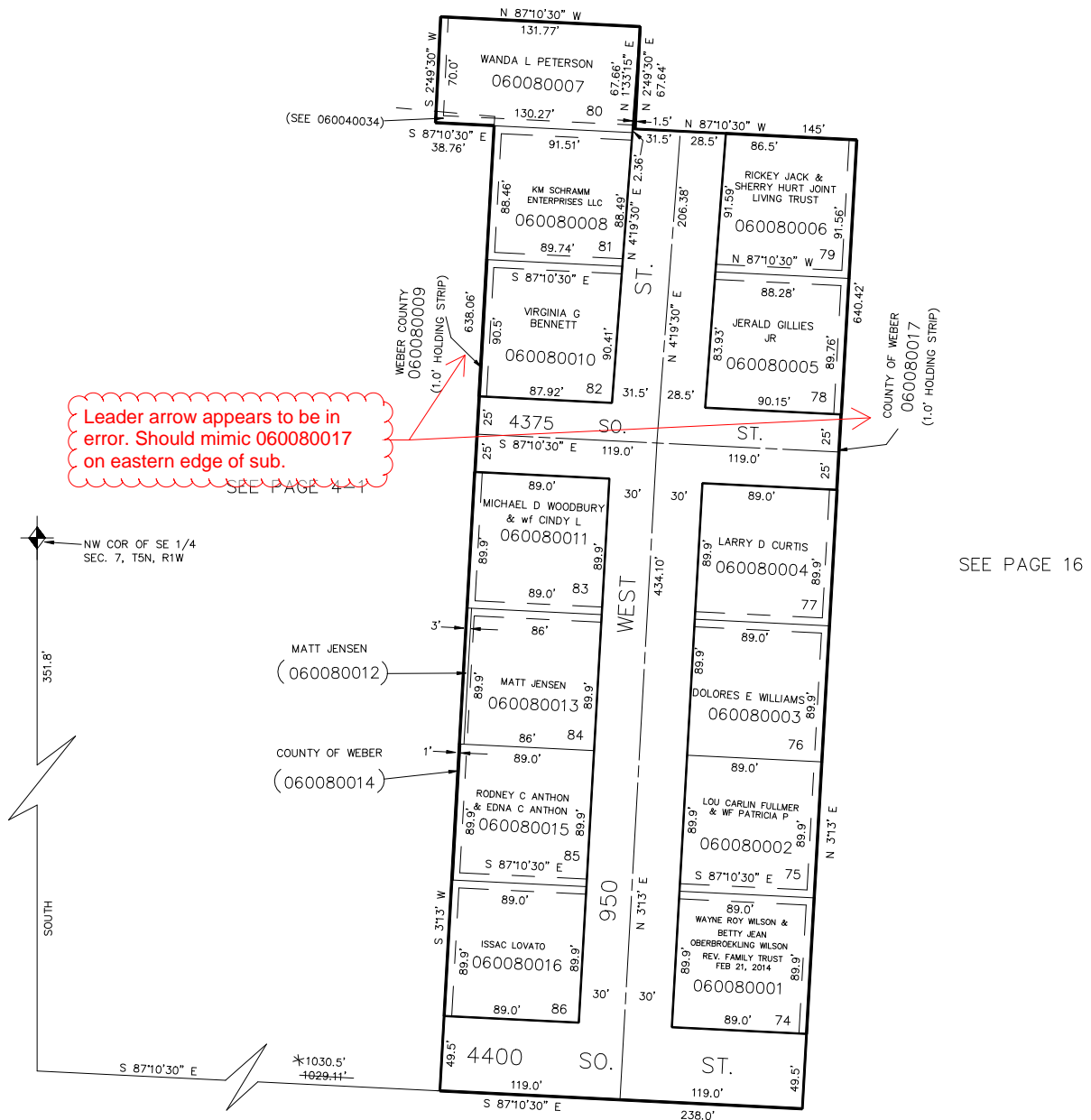
2019 RECORDER'S REFERENCE MAP

PART OF THE W 1/2, SEC. 7, T.5N., R.1W., S.L.B. & M.
RIVER VALLEY SUBDIVISION NO. 2

IN RIVERDALE CITY
 SCALE 1" = 60'

TAXING UNIT: 26

SEE PAGE 6



Leader arrow appears to be in error. Should mimic 060080017 on eastern edge of sub.

NW COR OF SE 1/4
 SEC. 7, T5N, R1W



MATT JENSEN
 (060080012)

COUNTY OF WEBER
 (060080014)

5' UTILITY & DRAINAGE EASEMENTS EACH SIDE OF PROPERTY LINES AS INDICATED BY DASHED LINES EXCEPT AS OTHERWISE SHOWN.

SEE PAGE 16

FOR COMPLETE ENG DATA SEE ORIGINAL DEDICATION PLAT IN BOOK 13, PAGE 27 OF RECORDS.

*CORRECTION AFFT 762-514.