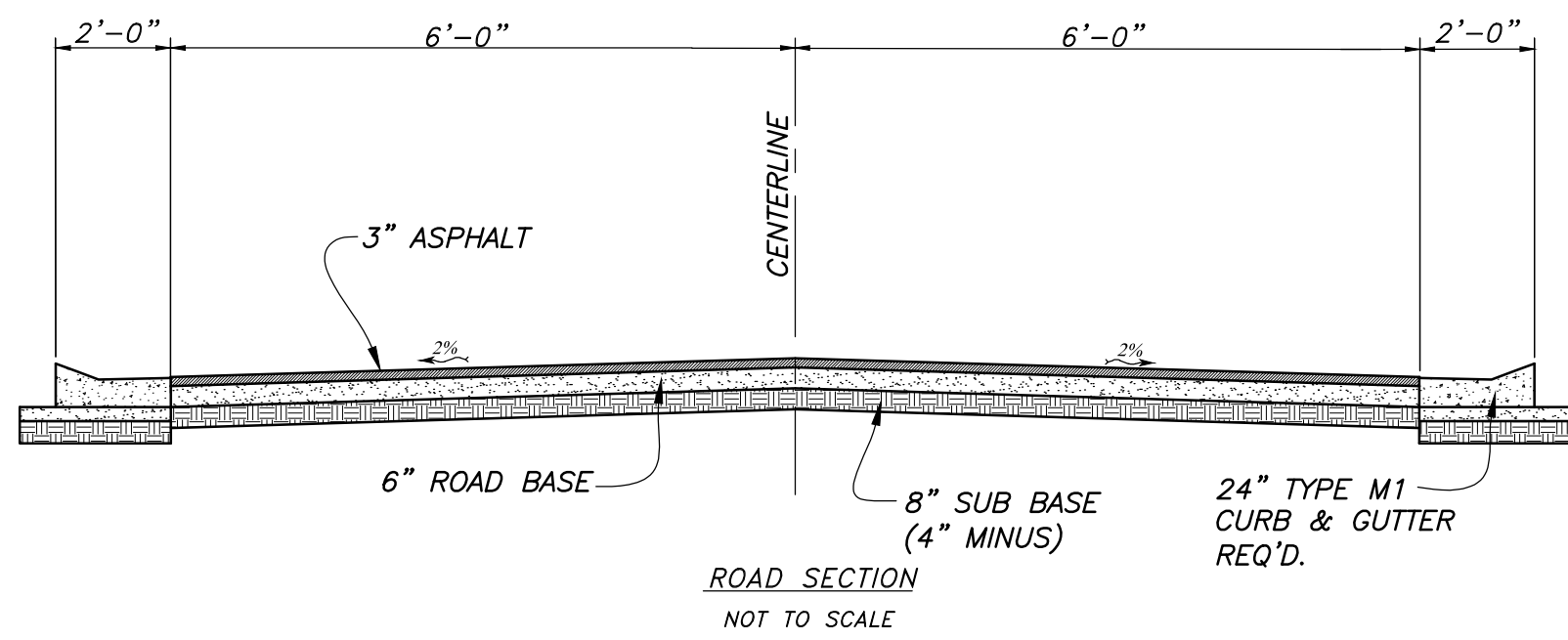


# Black Saddle Ranch Subdivision

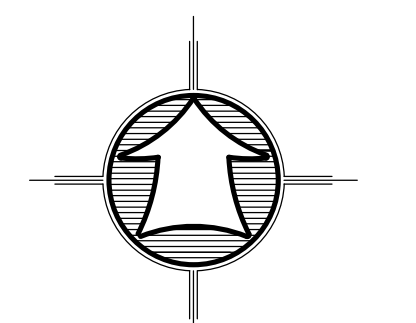
Weber County, Utah  
 A Part of the Northeast Quarter of Section 17,  
 Township 7 North, Range 1 East, Salt Lake Base & Meridian  
 May 15, 2019



LINE DATA			LINE DATA		
SEGMENT	DIRECTION	LENGTH	SEGMENT	DIRECTION	LENGTH
L1	N31°47'37"W	161.76'	L14	N47°25'00"W	88.73'
L2	N05°36'31"W	58.04'	L15	S19°53'44"W	46.22'
L3	N06°35'16"E	33.01'	L16	S10°50'27"E	80.16'
L4	N22°47'42"W	44.26'	L17	S41°14'38"E	114.86'
L5	N46°24'20"W	76.90'	L18	S28°01'10"E	110.11'
L6	N67°32'20"W	58.29'	L19	S07°58'06"E	116.12'
L7	N81°42'39"W	92.11'	L20	S37°22'09"E	49.65'
L8	N34°43'23"W	63.21'	L21	S30°49'44"W	70.78'
L9	N03°23'40"W	58.92'	L22	S63°49'55"W	73.89'
L10	N20°51'28"E	27.15'	L23	N60°02'07"W	21.99'
L11	N02°17'36"W	18.46'	L24	N21°01'54"W	76.17'
L12	N46°58'11"W	69.39'	L25	S81°47'21"W	111.32'
L13	N63°46'56"W	124.18'	L26	N01°51'35"W	80.00'

West Quarter Corner of Sec. 17,  
 T. 7 N., R. 1 E., S.L.B. & M.  
 Found Weber Co. Brass Cap  
 Monument 1998 - 2" above  
 ground Good Condition.

- LEGEND**
- Subject Property Line
  - Adjoining Property Line
  - Centerline
  - Ditch
  - Fence Line (Wire)
  - Fence Line (wood or Vinyl)
  - Non-Buildable Area
  - Proposed 3" New Asphalt Paving
  - Street Monument
  - Found rebar set by others
  - Set 5/8"x24" Rebar With Cap
  - Section Corner



R&R Boundary Line Per R.O.S. No. 001095  
 HAI Adjusted Boundary Line

### AGRICULTURAL NOTE

Agriculture is the preferred use in the Agriculture Zones. Agriculture operations as specified in the zoning ordinance for a particular zone are permitted at any time including the operation of farm machinery and no allowed agriculture use shall be subject to restriction on that it interferes with activities of future residents of this subdivision

### WEBER COUNTY ENGINEER

I Herby Certify that the Required Public Improvement Standards and Drawings for this Subdivision Conform with the County Standards and the Amount of the Financial Guarantee is Sufficient for the Installation of these Improvements.  
 Signed this \_\_\_\_\_ Day of \_\_\_\_\_, 2019.

Weber County Engineer

### WEBER COUNTY PLANNING COMMISSION APPROVAL

This is to Certify that this Subdivision Plat was Duly Approved by the Weber County Planning Commission.  
 Signed this \_\_\_\_\_ Day of \_\_\_\_\_, 2019.

Chairman, Weber County Planning Commission

### WEBER COUNTY COMMISSION ACCEPTANCE

This is to Certify that this Subdivision Plat, the Dedication of Streets and other Public Ways and Financial Guarantee of Public Improvements Associated with this Subdivision, Thereon are Herby Approved and Accepted by the Commissioners of Weber County Utah  
 Signed this \_\_\_\_\_ Day of \_\_\_\_\_, 2019.

Chairman, Weber County Commission

### WEBER-MORGAN HEALTH DEPARTMENT

I Herby Certify that the Soils, Percolation Rates, and Site Conditions for this Subdivision have been Investigated by this Office and are Approved for On-Site Wastewater Disposal Systems.  
 Signed this \_\_\_\_\_ Day of \_\_\_\_\_, 2019.

Director, Weber-Morgan Health Department

### WEBER COUNTY SURVEYOR

I Herby Certify that the Weber County Surveyor's Office has Reviewed this Plat for Mathematical Correctness, Section Corner Data, and for Harmony with the Lines and Monuments on Record in County Offices. The Approval of this Plat by the Weber County Surveyor does not Relieve the Licensed Land Surveyor who Executed this Plat from the Responsibilities and/or Liabilities Associated Therewith. Signed this \_\_\_\_\_ Day of \_\_\_\_\_, 2019.

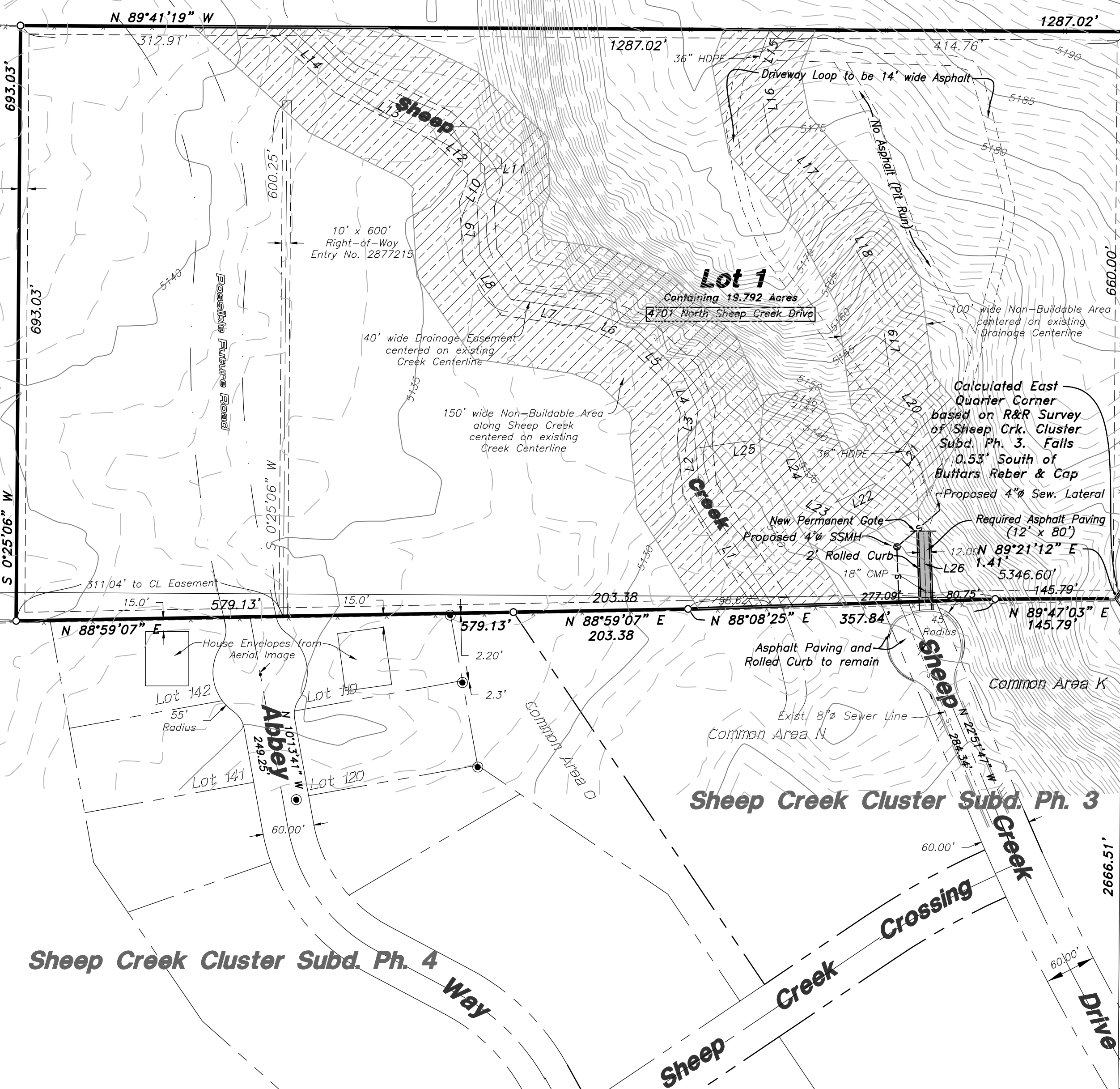
Weber County Surveyor

### WEBER COUNTY ATTORNEY

I Have Examined the Financial Guarantee and Other Documents Associated with this Subdivision Plat, and in my Opinion they Conform with the County Ordinance Applicable Thereto and now in Force and Affect  
 Signed this \_\_\_\_\_ Day of \_\_\_\_\_, 2019.

Weber County Attorney

Northeast Corner of Sec. 17,  
 T. 7 N., R. 1 E., S.L.B. & M.  
 Found Weber Co. 3" Brass  
 Cap Monument 1988 - 3"  
 above ground. Good Condition.

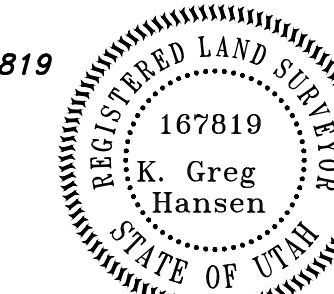


### SURVEYOR'S CERTIFICATE

I, K. Greg Hansen, do Herby Certify that I am a Registered Professional Land Surveyor in the State of Utah in Accordance with Title 58, Chapter 22, Professional Engineers and Land Surveyors Act; and I Have Completed a Survey of the Property Described on this Plat in Accordance with Section 17-23-17 and have Verified all Measurements, and have Placed Monuments as Represented on this Plat, and have Herby Subdivided said Tract into a single Lot, know Hereafter as Black Saddle Ranch Subdivision in Weber County, Utah, and has been Correctly Drawn to the Designated Scale and is True and Correct Representation of the Herein Described Lands Included in said Subdivision, Based Upon Data Compiled from Records in the Weber County Recorder's Office and from said Survey made by me on the Ground, I Further Herby Certify that the Requirements of all Applicable Statutes and Ordinances of Weber County Concerning Zoning Requirements Regarding Lot Measurements have been Complied with.

Signed this \_\_\_\_\_ day of \_\_\_\_\_, 2019.

K. Greg Hansen P.L.S.  
 Utah Land Surveyor Licence No. 167819



### BOUNDARY DESCRIPTION

A PART OF THE NORTHEAST QUARTER OF SECTION 17, TOWNSHIP 7 NORTH, RANGE 1 EAST OF THE SALT LAKE BASE AND MERIDIAN.  
 BEGINNING AT THE SOUTHEAST CORNER OF SAID NORTHEAST QUARTER AND RUNNING THENCE NORTH 00°25'06" EAST 660.00 FEET ALONG THE EAST LINE OF SAID NORTHEAST QUARTER; THENCE NORTH 89°41'19" WEST 1287.02 FEET; THENCE SOUTH 00°25'06" WEST 693.03 FEET TO THE NORTH BOUNDARY LINE OF SHEEP CREEK CLUSTER SUBDIVISION PHASE 4; THENCE NORTH 88°59'07" EAST 579.13 FEET TO THE NORTHEAST CORNER OF SAID SHEEP CREEK CLUSTER SUBDIVISION PHASE 4 BEING THE NORTHWEST CORNER OF SHEEP CREEK CLUSTER SUBDIVISION PHASE 3; THENCE ALONG THE NORTH BOUNDARY LINE OF SAID PHASE 3 THE FOLLOWING FOUR (4) COURSES; (1) NORTH 88°59'07" EAST 203.38 FEET; (2) NORTH 88°08'25" EAST 357.84 FEET; (3) NORTH 89°47'03" EAST 145.79 FEET; AND (4) NORTH 89°21'12" EAST 1.41 FEET TO THE POINT OF BEGINNING. CONTAINING 20.000 ACRES.

### OWNER'S DEDICATION AND CERTIFICATION

Know all men by these presents that we, the undersigned Owners of the above described tract of land having caused the same to be subdivided into a single lot, as shown on this plat and name said tract Black Saddle Ranch Subdivision and hereby dedicate, grant and convey, in perpetuity, pursuant to the provisions of 17-27a-607, Utah code, without condition, restriction or reservation to Weber County, Utah, all those parts or portions of said tract of land designated easements for public utility and drainage purposes as shown hereon. The same to be used for the installation, maintenance and operation of public utility service lines and drainage as may be authorized by the Governing Authority in witness we have here unto set our signature this \_\_\_\_\_ day of \_\_\_\_\_, 2019.

Lonnie Martinez

Jennifer A. Martinez

M. Shayne Loewenstein

Summer Kay Loewenstein

### ACKNOWLEDGMENT

State of Utah  
 County of \_\_\_\_\_

On this \_\_\_\_\_ day of \_\_\_\_\_, 2019, Lonnie Martinez, and Jennifer A. Martinez, Husband and Wife as Joint Tenants, Personally Appeared before me, the Undersigned Notary Public in and for said County of Weber, in the State of Utah, the Signers of the Attached Owners Dedication, two in Numbers, who duly Acknowledged to me they Signed it Freely and Voluntarily and for the Purpose Therein Mentioned.

Notary Public

### ACKNOWLEDGMENT

State of Utah  
 County of \_\_\_\_\_

On this \_\_\_\_\_ day of \_\_\_\_\_, 2019, M. Shayne Loewenstein and Summer Kay Loewenstein, Husband and Wife as Joint Tenants, Personally Appeared before me, the Undersigned Notary Public in and for said County of Weber, in the State of Utah, the Signers of the Attached Owners Dedication, two in Numbers, who duly Acknowledged to me they Signed it Freely and Voluntarily and for the Purpose Therein Mentioned.

Notary Public

### WEBER COUNTY RECORDER

ENTRY NO. \_\_\_\_\_ FEE PAID \_\_\_\_\_

FILED FOR RECORD AND

RECORDED \_\_\_\_\_

IN BOOK \_\_\_\_\_ OF OFFICIAL

RECORDS, PAGE \_\_\_\_\_ RECORDED

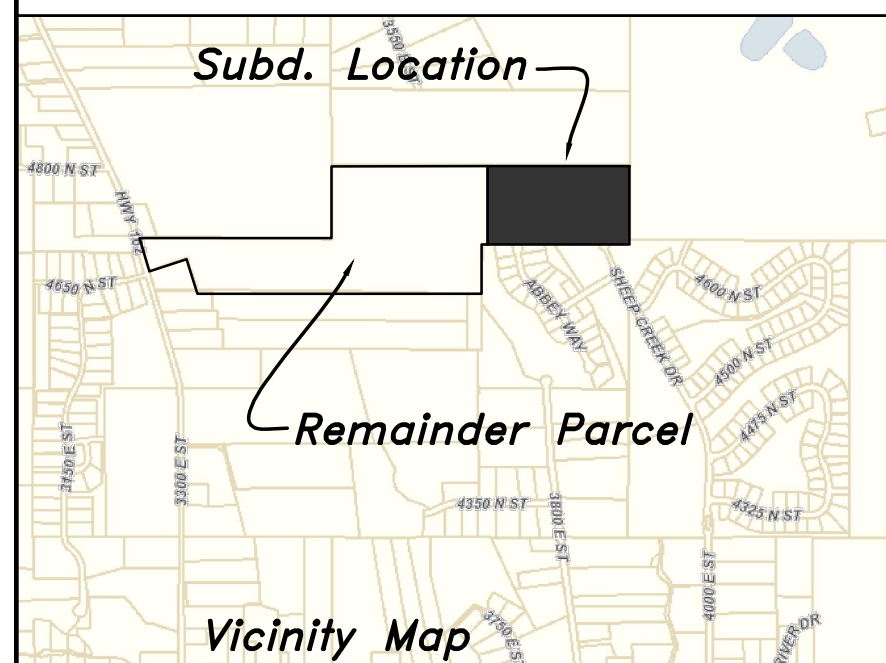
FOR \_\_\_\_\_

COUNTY RECORDER

BY: \_\_\_\_\_ DEPUTY

### NARRATIVE

The Purpose of this Survey was to Establish and set the Property Corners of this one Lot Subdivision as Shown and Described Hereon. This Survey was ordered by Lonnie Martinez. The POB for this Subdivision was determined using the Record Bearings and Distances of Sheep Creek Cluster Subdivisions Phase 3 & 4. A Butlars Rebar was found near this location but is 0.53' north of the calculated corner. Using the Sheep Creek Quarter Corner Location put this survey about 2.2' South of found Reeves rebar within said subdivisions. The Control used to Establish the Property Corners was the Existing Weber County Surveyor Monumentation Surrounding Section 17, Township 7 North, Range 1 East, S.L.B. & M. The basis of bearing is the East line of said Section which bears North 00°25'06" East, Utah North, State Plane, Calculated N.A.D.83 Bearing.



Developer: Lonnie & Jennifer Martinez  
 jmartinez@holmail.com  
 (801) 529-6652

Notes:  
 1 - ALL PUBLIC UTILITY EASEMENTS (PUE'S) ARE 10.00 FEET WIDE UNLESS NOTED OTHERWISE.  
 2 - WATER SYSTEM TO BE APPROVED INDIVIDUAL WATER WELL.

**HANSEN & ASSOCIATES, INC.**  
 Consulting Engineers and Land Surveyors  
 538 North Main Street, Brigham, Utah 84302  
 Visit us at www.hais.net  
 Brigham City Ogden Logan  
 (435) 723-3491 (801) 399-4905 (435) 752-8272