

**Legend**

(Note: All items may not appear on drawing)

- San Sewer Manhole
- Water Manhole
- Storm Drain Manhole
- Electrical Manhole
- Catch Basins
- Exist. Fire Hydrant
- Exist. Water Valve
- Water Valve
- Sanitary Sewer
- Quinary Water
- Gas Line
- Irrigation Line
- Storm Drain
- Telephone Line
- Secondary Waterline
- Power Line
- Fire Line
- Land Drain
- Power pole
- Power pole w/guy
- Light Pole
- Fence
- Flowline of ditch
- Overhead Power line
- Corrugated Metal Pipe
- Concrete Pipe
- Reinforced Concrete Pipe
- Ductile Iron
- Polyvinyl Chloride
- Top of Asphalt
- Edge of Asphalt
- Centerline
- Flowline
- Finish Floor
- Top of Curb
- Top of Wall
- Top of Walk
- Top of Concrete
- Natural Ground
- Finish Grade
- Fire Department Connection
- Finish Contour
- Exist. Contour
- Finish Grade
- Exist. Grade
- Ridge Line
- Direction of Flow
- Existing Asphalt
- New Asphalt
- Grass
- Concrete
- Bark Mulch
- Sand
- Gravel
- Patio Area
- Demo Tree

Existing Area Breakdown

- Non-Landscaping  
 Asphalt = 10,179 sq. ft = 34.01%  
 Concrete = 1,451 sq. ft = 4.85%  
 Building = 5,247 sq. ft = 17.53%  
 Non-Landscaping Total = 16,877 sq. ft.

- Landscaping  
 Grass Area = 7,636 sq. ft = 25.51%  
 Bark Mulch = 1,830 sq. ft = 6.11%  
 Sand = 260 sq. ft = 0.87%  
 Gravel = 1,511 sq. ft = 5.05%  
 Patio Area = 1,815 sq. ft = 6.06%  
 Landscaping Total = 13,052 sq. ft.

Overall Total Area = 29,929 sq. ft = 100% = 0.687 Acres  
 (Grass is 58.5% of Landscaping)

**GREAT BASIN ENGINEERING**

5746 SOUTH 1475 EAST DGDEN, UTAH 84403  
 MAIN (801)394-4515 S.L.C (801)521-0222 FAX (801)392-7544  
 WWW.GREATBASINENGINEERING.COM

**Demolition Plan**

**Daycare Eden**

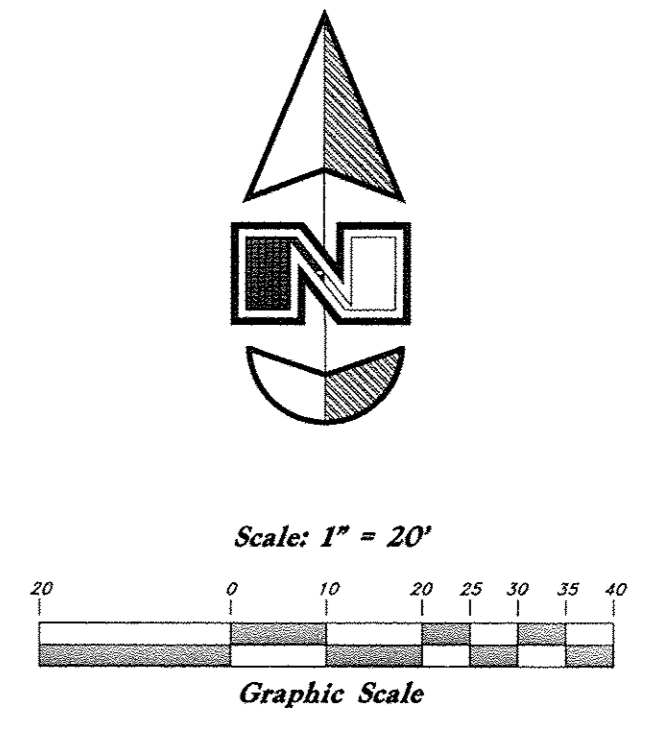
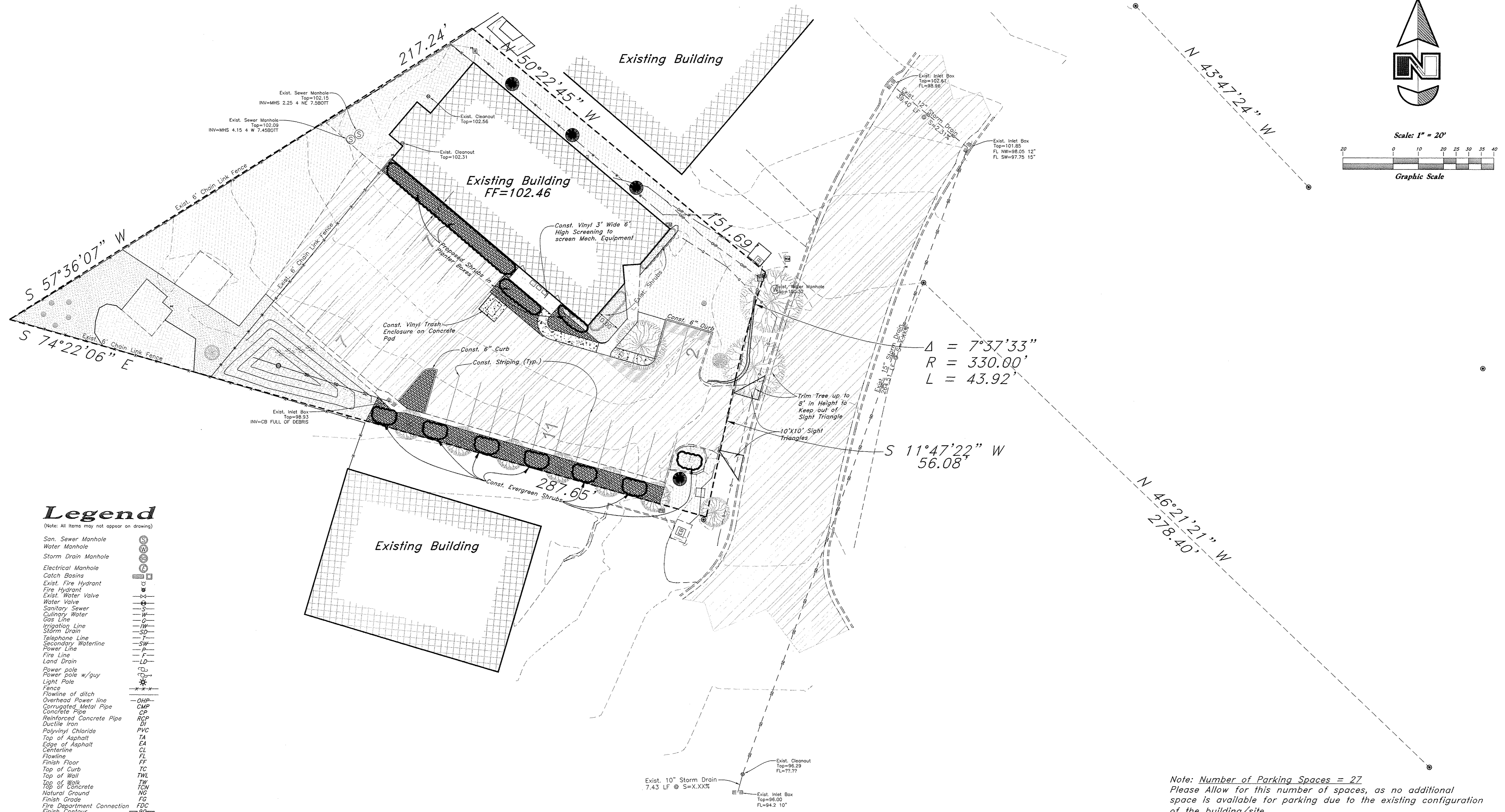
4786 E. 2600 N  
 Eden, Utah 84310  
 A part of Section 34, 17N, 10E, S18&M, U.S. Survey

Dec, 2012

SHEET NO.

**C1**

12N244



**Legend**

- (Note: All items may not appear on drawing)
- San. Sewer Manhole
  - Water Manhole
  - Storm Drain Manhole
  - Electrical Manhole
  - Catch Basins
  - Exist. Fire Hydrant
  - Fire Hydrant
  - Exist. Water Valve
  - Water Valve
  - Sanitary Sewer
  - Culinary Water
  - Gas Line
  - Irrigation Line
  - Storm Drain
  - Telephone Line
  - Secondary Waterline
  - Power Line
  - Fire Line
  - Land Drain
  - Power pole
  - Power pole w/guy
  - Light Pole
  - Fence
  - Flowline of ditch
  - Overhead Power line
  - Corrugated Metal Pipe
  - Concrete Pipe
  - Reinforced Concrete Pipe
  - Ductile Iron
  - Polyvinyl Chloride
  - Top of Asphalt
  - Edge of Asphalt
  - Centerline
  - Flowline
  - Finish Floor
  - Top of Curb
  - Top of Wall
  - Top of Walk
  - Top of Concrete
  - Natural Ground
  - Finish Grade
  - Fire Department Connection
  - Finish Contour
  - Exist. Contour
  - Finish Grade
  - Exist. Grade
  - Ridge Line
  - Direction of Flow
  - Existing Asphalt
  - New Asphalt
  - Existing Grass
  - Existing Concrete
  - New Concrete
  - Existing Bark Mulch
  - New Bark Mulch
  - Existing Sand
  - Existing Gravel
  - Exist Deciduous Tree
  - Exist Evergreen Tree
  - New Evergreen Tree
  - Existing Patio

Note: Number of Parking Spaces = 27  
 Please Allow for this number of spaces, as no additional space is available for parking due to the existing configuration of the building/site.

**Proposed Area Breakdown**

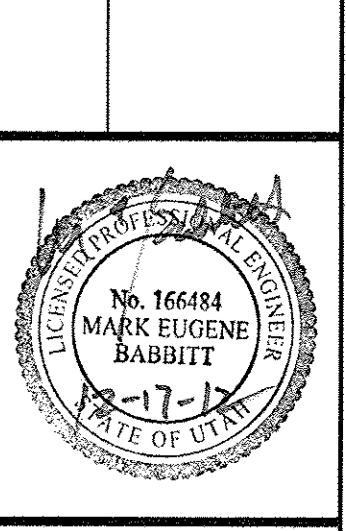
**- Non-Landscaping**  
 Asphalt = 9,815 sq. ft = 32.79%  
 Concrete = 1,151 sq. ft = 3.85%  
 Building = 5,247 sq. ft = 17.53%  
**Non-Landscaping Total = 16,877 sq. ft.**

**- Landscaping**  
 Grass Area = 6,603 sq. ft = 22.06%  
 Bark Mulch = 3,528 sq. ft = 11.79%  
 Sand = 260 sq. ft = 0.87%  
 Gravel = 1,511 sq. ft = 5.05%  
 Patio Area = 1,815 sq. ft = 6.06%  
**Landscaping Total = 13,718 sq. ft.**

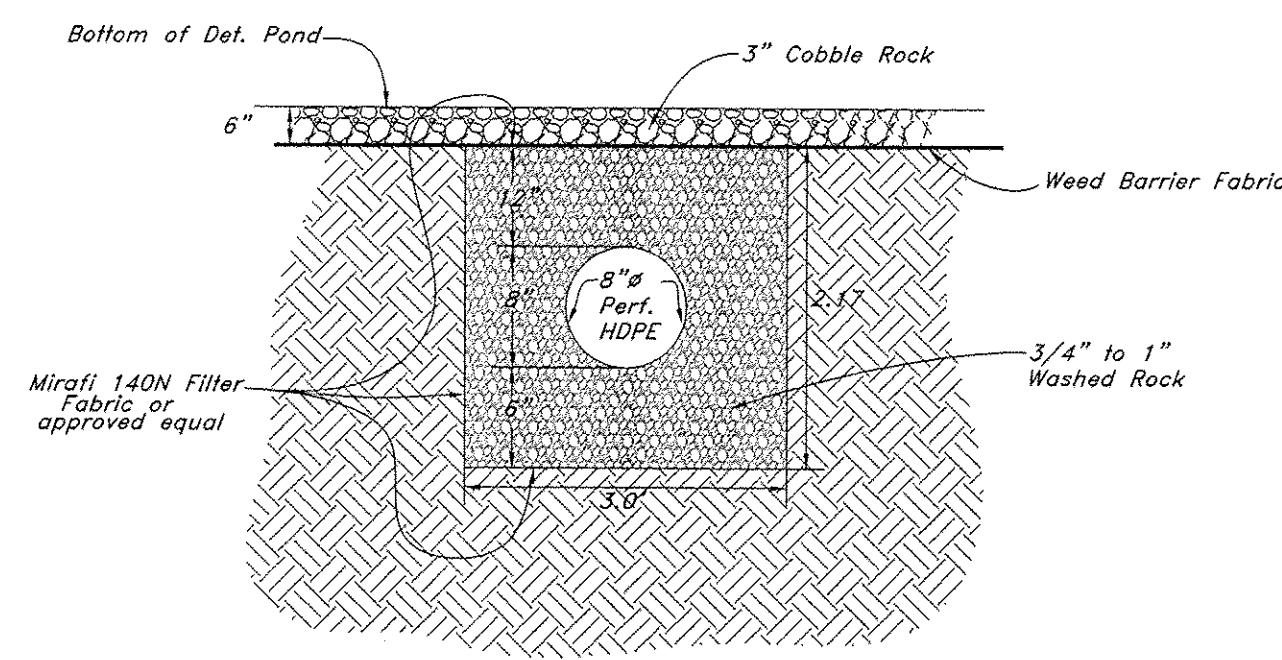
Overall Total Area = 29,929 sq. ft = 100% = 0.687 Acres  
 (Grass is 6603/13718 = 48.13% of Landscaping)

**GREAT BASIN ENGINEERING**  
 5746 SOUTH 1475 EAST OGDEN, UTAH 84403  
 MAIN (801)394-4515 S.L.C (801)521-0222 FAX (801)392-7544  
 WWW.GREATBASINENGINEERING.COM

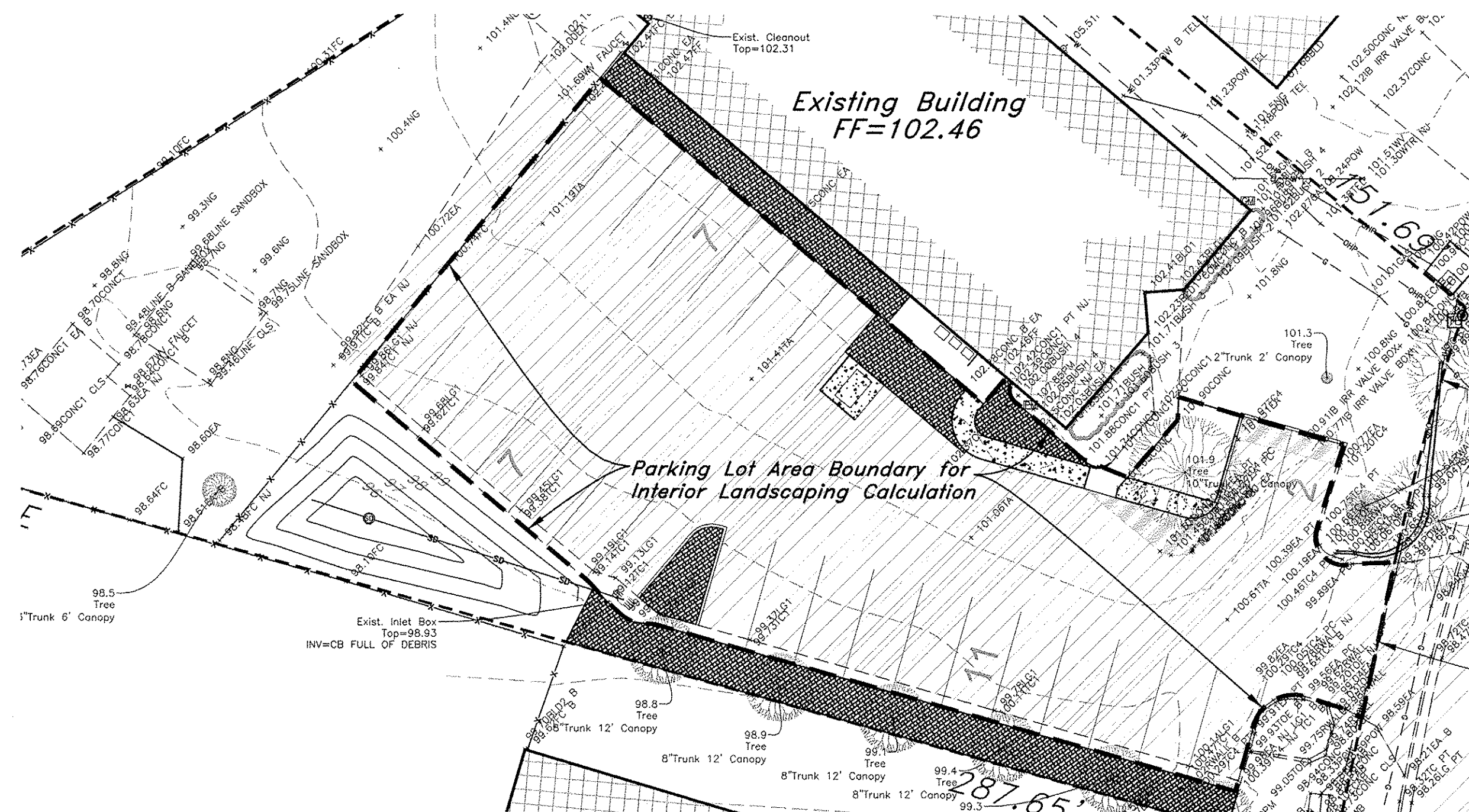
**Site Plan**  
**Daycare Eden**  
 4786 E. 2600 N  
 Eden Utah 84310  
 A part of Section 34, T7N, R1E, S16&M, U.S. Survey



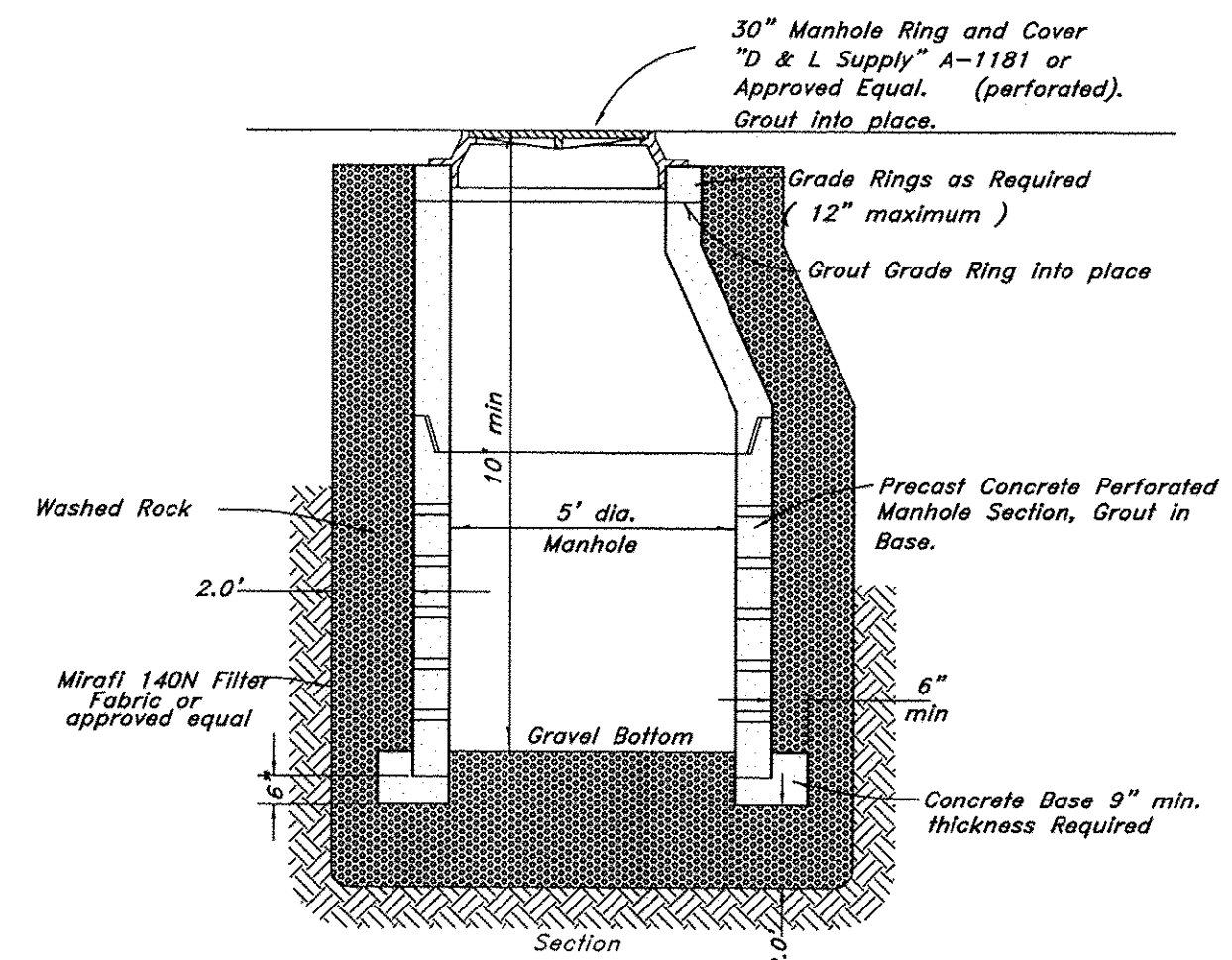
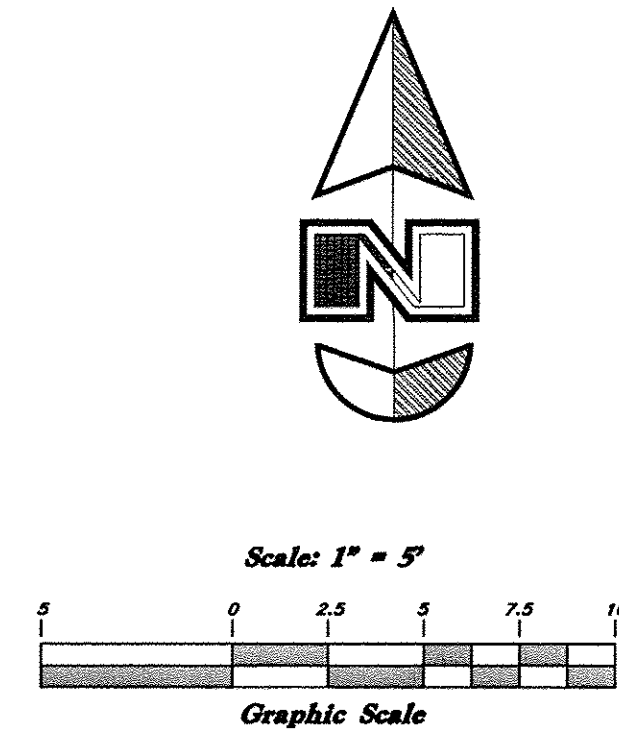
Dec, 2012  
 SHEET NO.  
**C2**  
 12N244



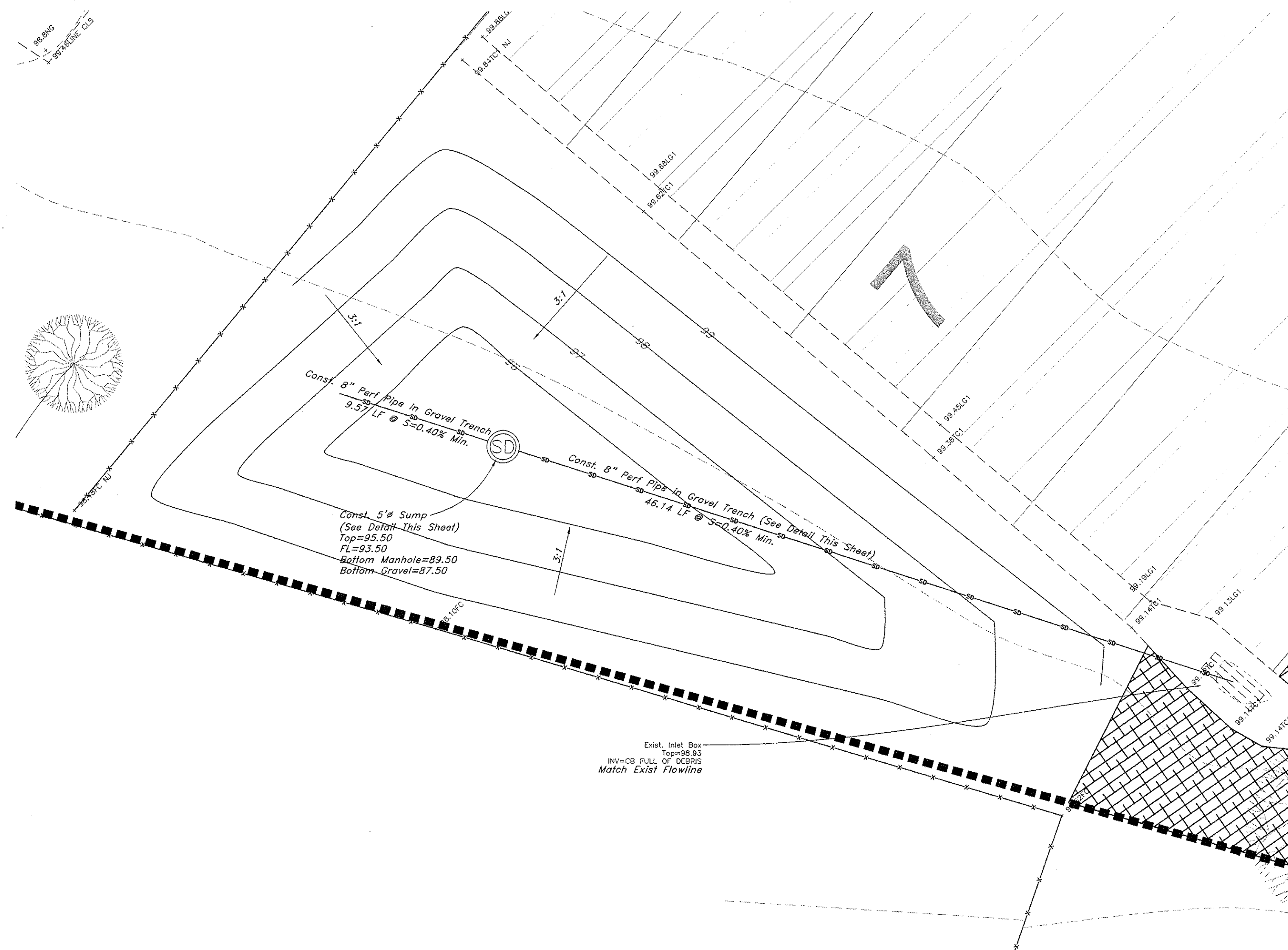
**1** Gravel Trench in Detention Pond  
Not to Scale



Parking Lot Area = 10,640 sq. ft.  
Interior Landscaping Area = 637 sq. ft.  
Interior Landscaping %-age =  $637/10640 = 5.99\%$

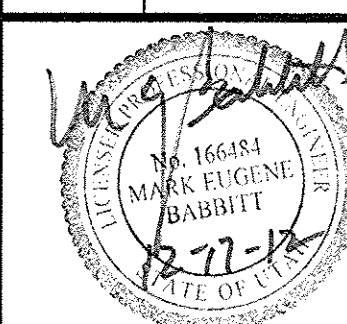


**2** Typical Sump Detail  
Not to Scale



**GREAT BASIN ENGINEERING**  
5746 SOUTH 1475 EAST OGDEN, UTAH 84403  
MAIN (801)394-4515 S.L.C (801)521-0222 FAX (801)392-7544  
WWW.GREATBASINENGINEERING.COM

**Retention Pond and Details**  
**Daycare Eden**  
4726 E. 2600 N  
Eden, Utah 84310  
A part of Section 34, 17N, 10E, SLB&M, U.S. Survey



Dec, 2012

SHEET NO.

**C3**

12N244