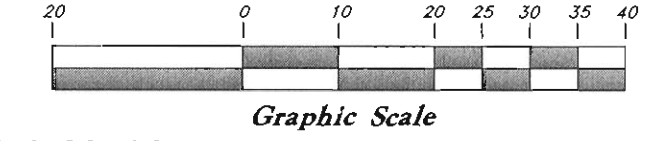


Scale: 1" = 20'



Legend

(Note: All items may not appear on drawing)

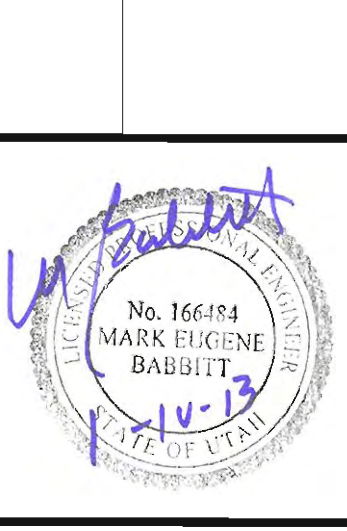
- San. Sewer Manhole
- Water Manhole
- Storm Drain Manhole
- Electrical Manhole
- Catch Basins
- Exist. Fire Hydrant
- Fire Hydrant
- Exist. Water Valve
- Water Valve
- Sanitary Sewer
- Quinary Water
- Gas Line
- Irrigation Line
- Storm Drain
- Telephone Line
- Secondary Waterline
- Power Line
- Fire Line
- Land Drain
- Power pole
- Power pole w/guy
- Light Pole
- Fence
- Flowline of ditch
- Overhead Power line
- Corrugated Metal Pipe
- Concrete Pipe
- Reinforced Concrete Pipe
- Ductile Iron
- Polyvinyl Chloride
- Top of Asphalt
- Edge of Asphalt
- Centerline
- Flowline
- Finish Floor
- Top of Curb
- Top of Wall
- Top of Walk
- Top of Concrete
- Natural Ground
- Finish Grade
- Fire Department Connection
- Finish Contour
- Exist. Contour
- Finish Grade
- Exist. Grass
- Ridge Line
- Direction of Flow
- Existing Asphalt
- New Asphalt
- Grass
- Concrete
- Bark Mulch
- Sand
- Gravel
- Patio Area
- Demo Tree

Existing Area Breakdown

- Non-Landscaping	
Asphalt =	10,179 sq. ft = 34.01%
Concrete =	1,451 sq. ft = 4.85%
Building =	5,247 sq. ft = 17.53%
Non-Landscaping Total = 16,877 sq. ft.	
- Landscaping	
Grass Area =	7,636 sq. ft = 25.51%
Bark Mulch =	1,830 sq. ft = 6.11%
Sand =	260 sq. ft = 0.87%
Gravel =	1,511 sq. ft = 5.05%
Patio Area =	1,815 sq. ft = 6.06%
Landscaping Total = 13,052 sq. ft.	
Overall Total Area = 29,929 sq. ft = 100% = 0.687 Acres	
(Grass is 58.5% of Landscaping)	

GREAT BASIN ENGINEERING
 5746 SOUTH 1475 EAST, DENVER, UTAH 84403
 MAIN (801) 521-0222 FAX (801) 992-7544
 WWW.GREATBASINENGINEERING.COM

Demolition Plan
Daycare Eden
 4786 E 2600 N
 Eden, Utah 84310
 A part of Section 34, 17N, 11E, SLB&M, U.S. Survey

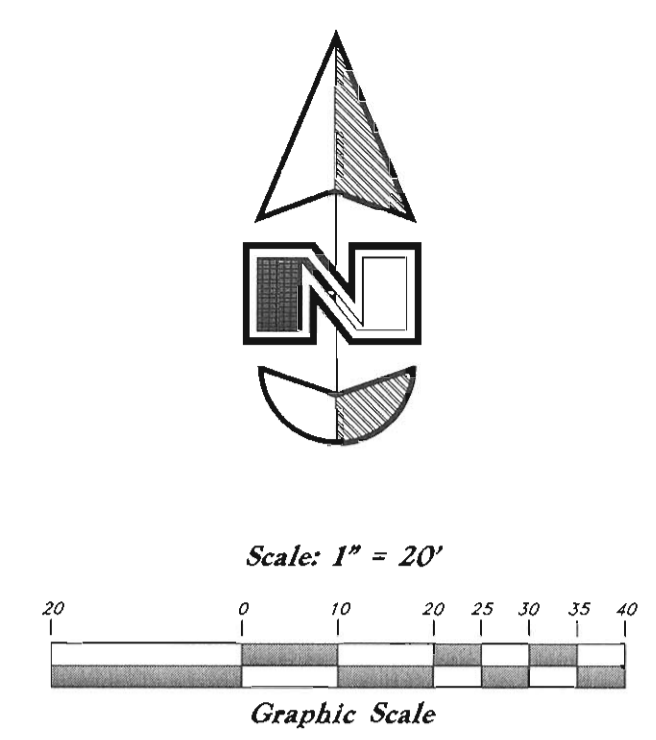
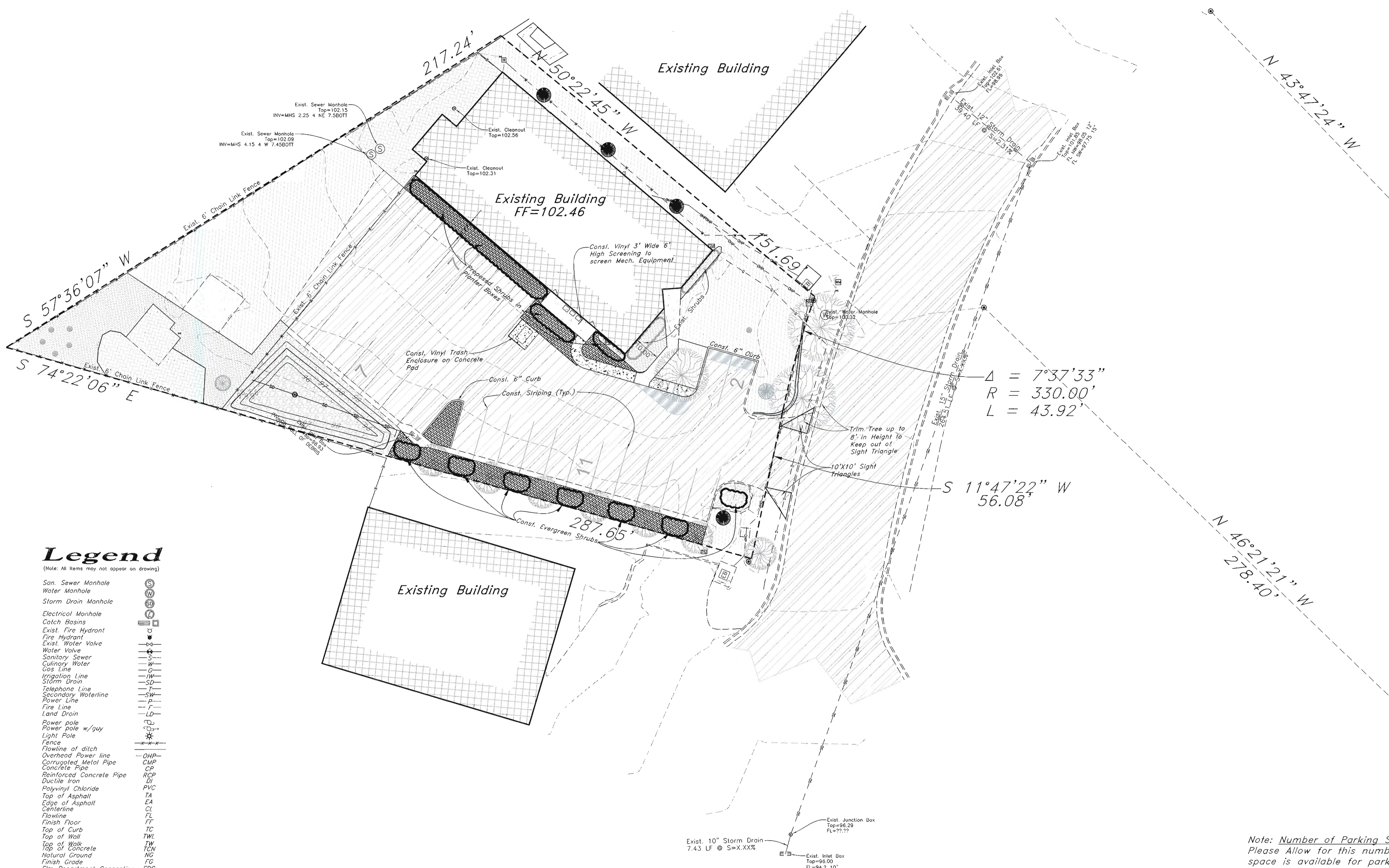


Dec, 2012

SHEET NO.

C1

12N244



Legend

(Note: All items may not appear on drawing)

- San Sewer Manhole
- Water Manhole
- Storm Drain Manhole
- Electrical Manhole
- Catch Basins
- Exist. Fire Hydrant
- Fire Hydrant
- Existing Water Valve
- Water Valve
- Sanitary Sewer
- Culinary Water
- Gas Line
- Irrigation Line
- Storm Drain
- Telephone Line
- Secondary Waterline
- Power Line
- Fire Line
- Land Drain
- Power pole
- Power pole w/guy
- Light Pole
- Fence
- Flowline of ditch
- Overhead Power line
- Corrugated Metal Pipe
- Concrete Pipe
- Reinforced Concrete Pipe
- Ductile Iron
- Polyvinyl Chloride
- Top of Asphalt
- Edge of Asphalt
- Centerline
- Flowline
- Finish Floor
- Top of Curb
- Top of Wall
- Top of Walk
- Top of Concrete
- Natural Ground
- Finish Grade
- Fire Department Connection
- Finish Contour
- Exist. Contour
- Finish Grade
- Exist. Grade
- Ridge Line
- Direction of Flow
- Existing Asphalt
- New Asphalt
- Existing Grass
- Existing Concrete
- New Concrete
- Existing Bark Mulch
- New Bark Mulch
- Existing Sand
- Existing Gravel
- Exist Deciduous Tree
- Exist Evergreen Tree
- New Evergreen Tree
- Existing Patio

Note: Number of Parking Spaces = 27
Please Allow for this number of spaces, as no additional space is available for parking due to the existing configuration of the building/site.

Proposed Area Breakdown

- Non-Landscaping
Asphalt = 9,813 sq. ft = 32.79%
Concrete = 1,151 sq. ft = 3.85%
Building = 5,247 sq. ft = 17.53%
Non-Landscaping Total = 16,877 sq. ft.

- Landscaping
Grass Area = 6,603 sq. ft = 22.06%
Bark Mulch = 3,528 sq. ft = 11.79%
Sand = 260 sq. ft = 0.87%
Gravel = 1,511 sq. ft = 5.05%
Patio Area = 1,815 sq. ft = 6.06%
Landscaping Total = 13,718 sq. ft.

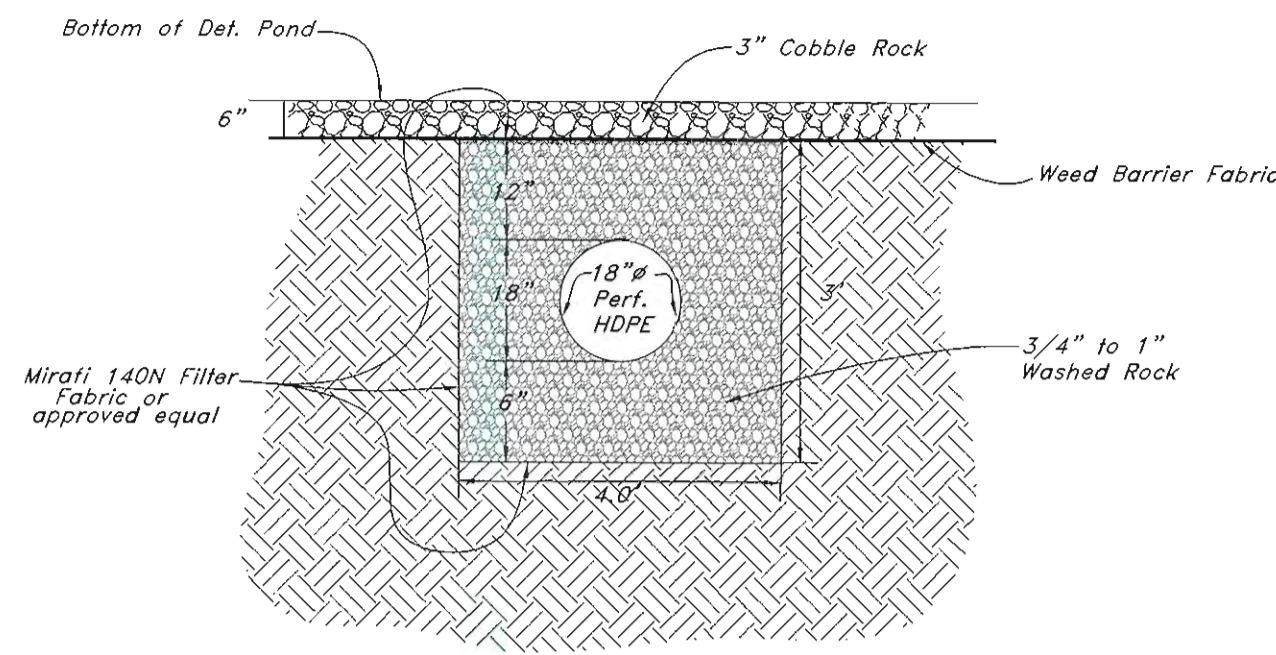
Overall Total Area = 29,929 sq. ft = 100% = 0.687 Acres
(Grass is 6603/13718 = 48.13% of Landscaping)

GREAT BASIN ENGINEERING
574 S SOUTH 1475 EAST, OGDEN, UTAH 84403
MAIN (801) 394-4515, S.L.C. (801) 521-0222, FAX (801) 392-7544
WWW.GREATBASINENGINEERING.COM

Site Plan
Daycare Eden
4786 E 2600 N
Eden, Utah 84310
A part of Section 34, T7N, R1E, S1B&M, U.S. Survey

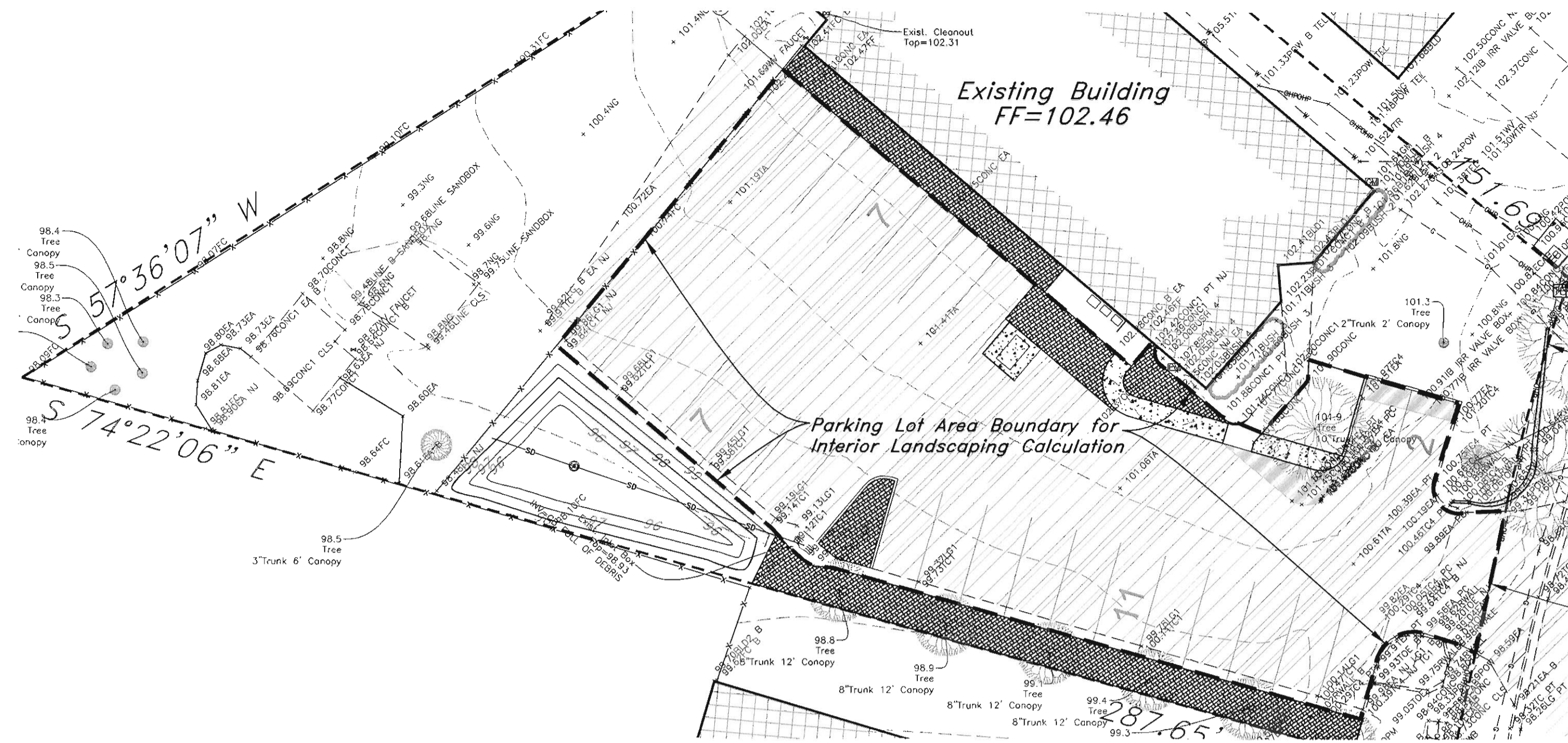
Professional Engineer Seal for Mark Eugene Babbitt, License No. 16618, State of Utah, dated 1-10-13.

Dec, 2012
SHEET NO. **C2**
12N244

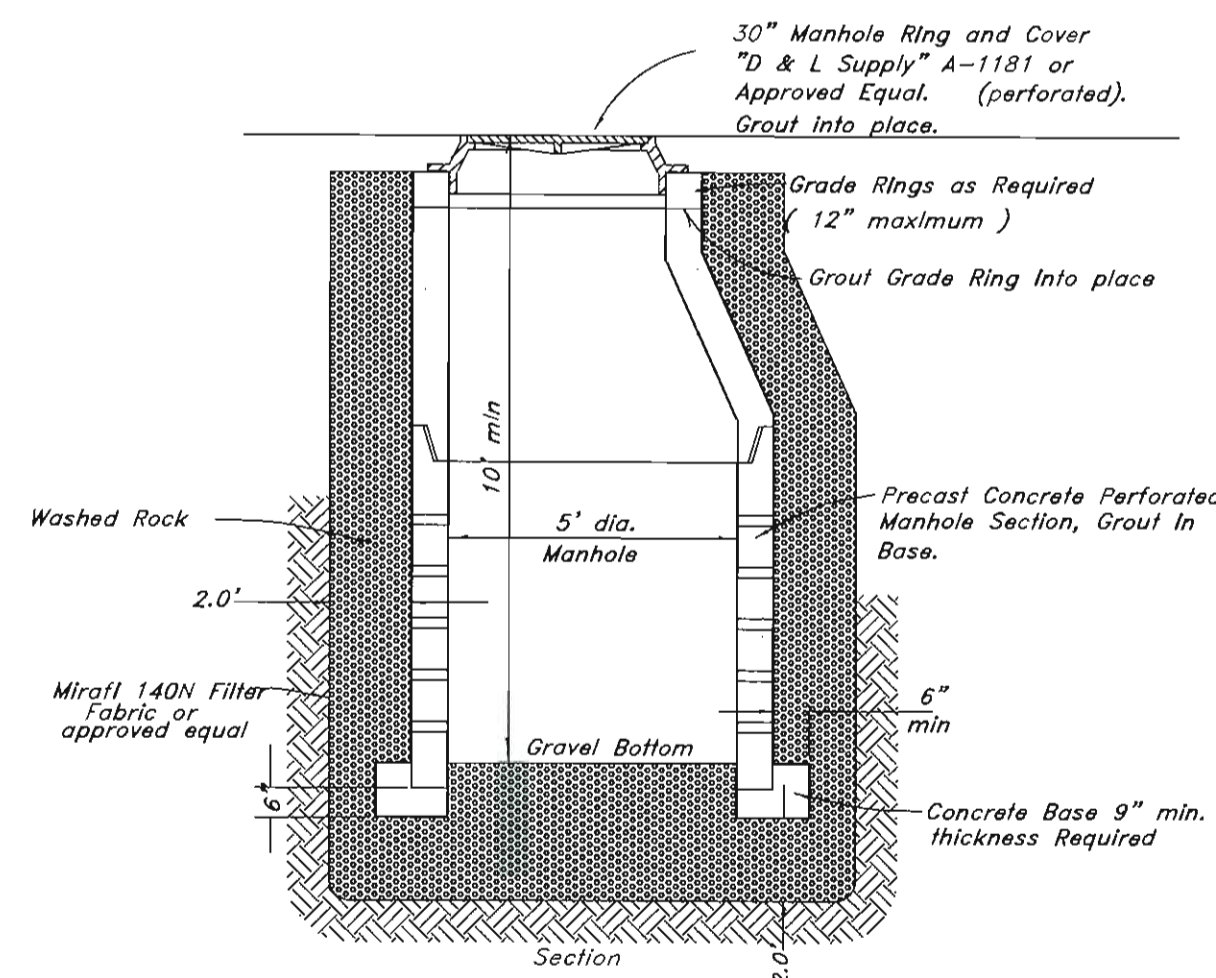
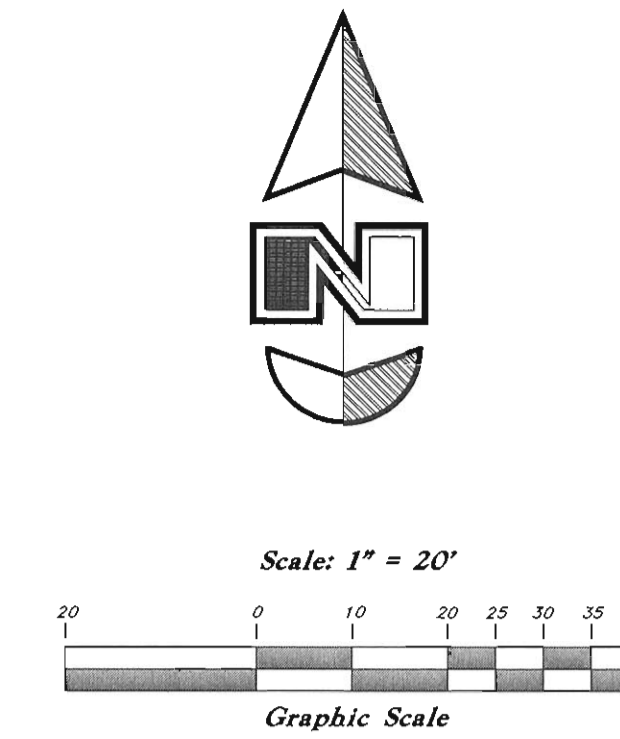


1 Gravel Trench in Detention Pond

Not to Scale

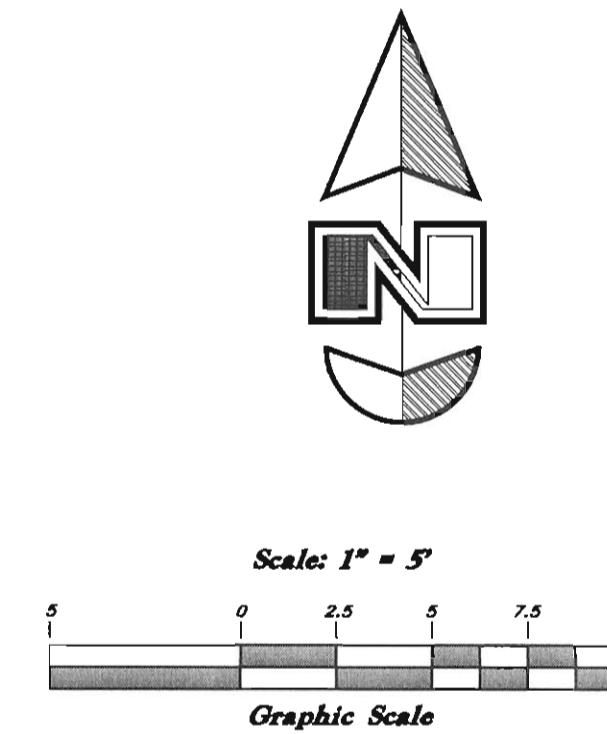
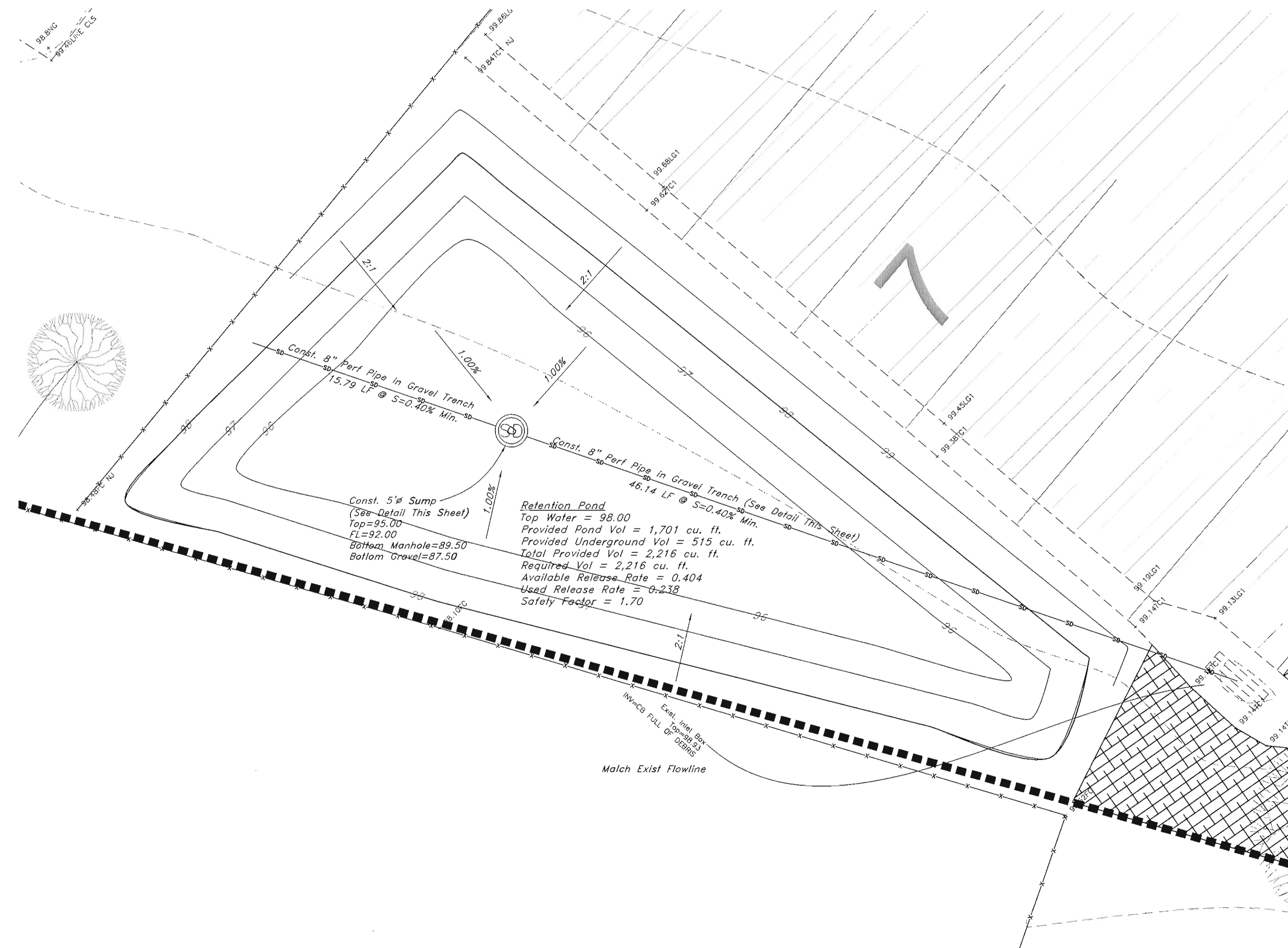


Parking Lot Area = 10,640 sq. ft.
 Interior Landscaping Area = 637 sq. ft.
 Interior Landscaping %-age = 637/10640 = 5.99%



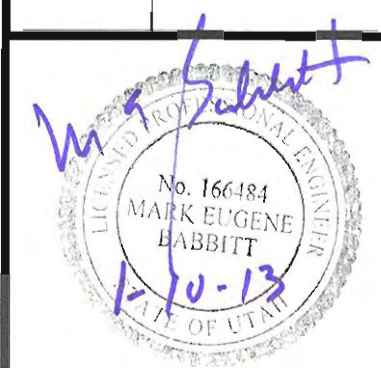
2 Typical Sump Detail

Not to Scale



Retention Pond and Details
Daycare Eden
 4786 E 2600 N
 Eden, Utah 84310
 A part of Section 34, 17N, 10E, SLB&M, U.S. Survey

GREAT BASIN ENGINEERING
 5746 SOUTH 1475 EAST, OGDEN, UTAH 84403
 MAIN (801) 394-4515, S.L.C (801) 521-0222, FAX (801) 392-7544
 WWW.GREATBASINENGINEERING.COM



Dec, 2012

SHEET NO. **C3**

12N244