

Add a note indicating that the aluminum, metal will be painted and earthtone.

Include a note stating that the recessed lighting will be in compliance with Section 106-16 (Open Valley Outdoor Lighting).

C4

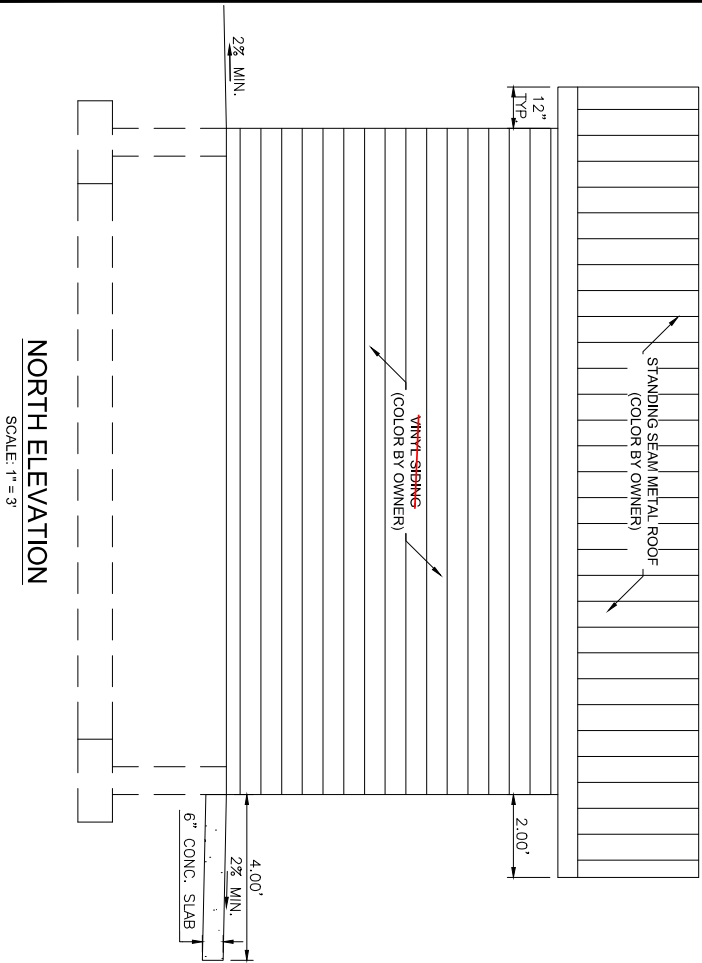
6

**GARDNER ENGINEERING**  
 CIVIL - LAND PLANNING  
 MUNICIPAL - LAND SURVEYING

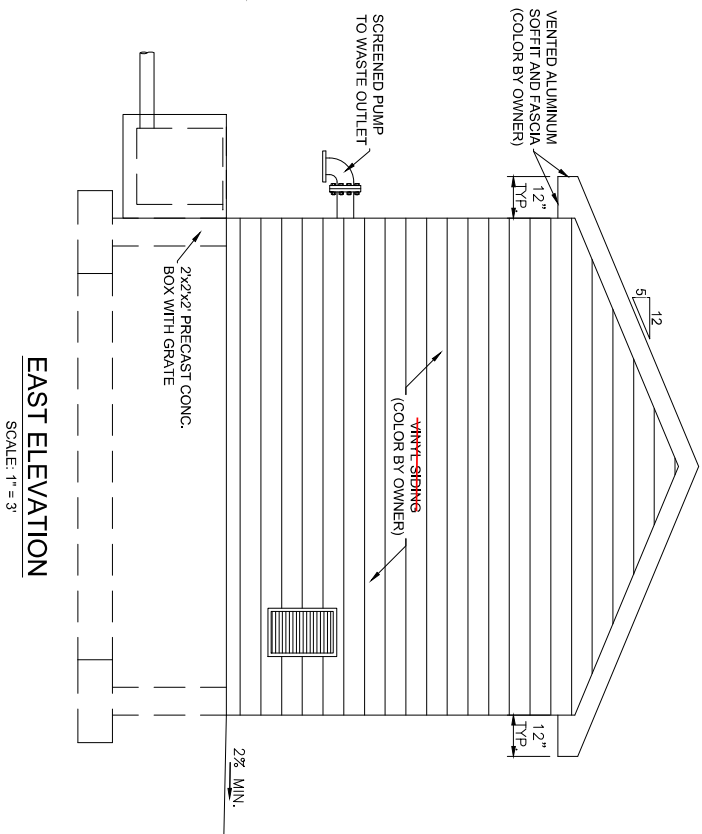
**EDEN WATERWORKS COMPANY**  
**KAMMEYER WELL HOUSE, CHLORINATION BLDG.**  
**WELL HOUSE ELEVATIONS**  
**EDEN, WEBER COUNTY, UTAH**

Revisions		Date	Description
		2-19-2019	Scale: AS NOTED
			Designed: DW
			Drafted: BSD
			Checked: DW

Path: \_\_\_\_\_



**NORTH ELEVATION**  
SCALE: 1" = 3'



**EAST ELEVATION**  
SCALE: 1" = 3'

C5  
6



**EDEN WATERWORKS COMPANY**  
**KAMMEYER WELL HOUSE, CHLORINATION BLDG.**  
**WELL HOUSE ELEVATIONS**  
**EDEN, WEBER COUNTY, UTAH**

Revisions	
Date	Description

Date: 2-19-2019  
Scale: AS NOTED  
Designed: DW  
Drafted: BSD  
Checked: DW

Path: \_\_\_\_\_