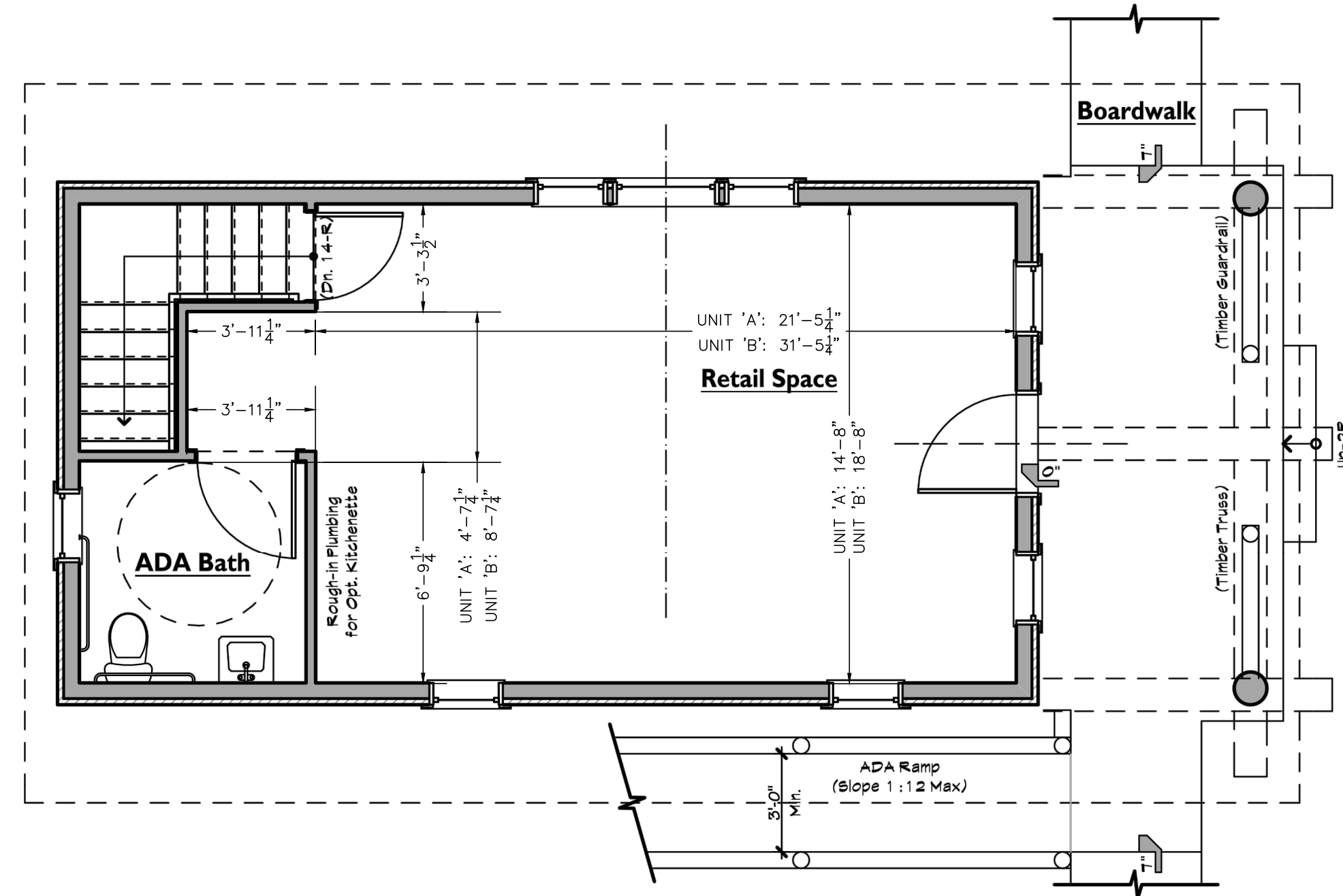
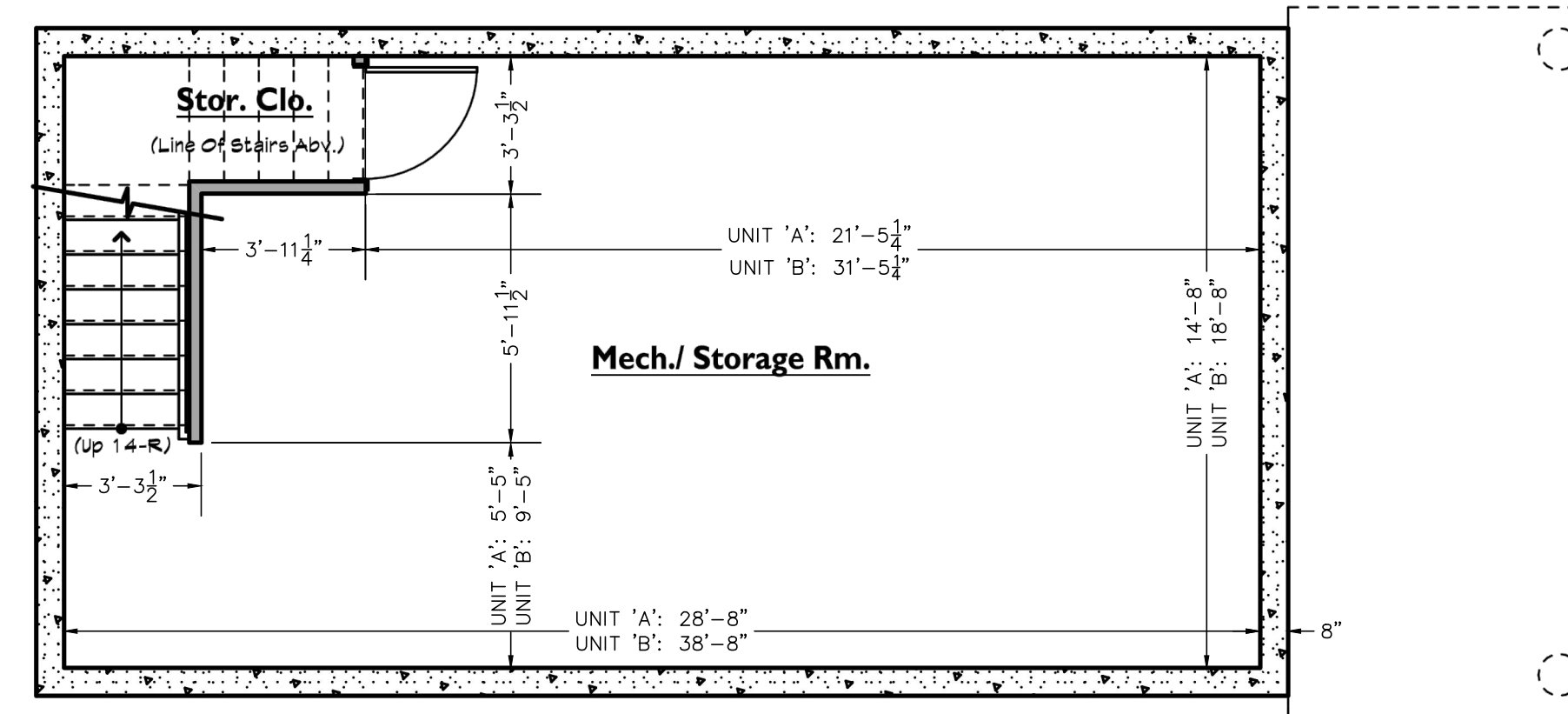


# LITTLE BEAR SUBDISION LOT 3, 1ST AMENDMENT

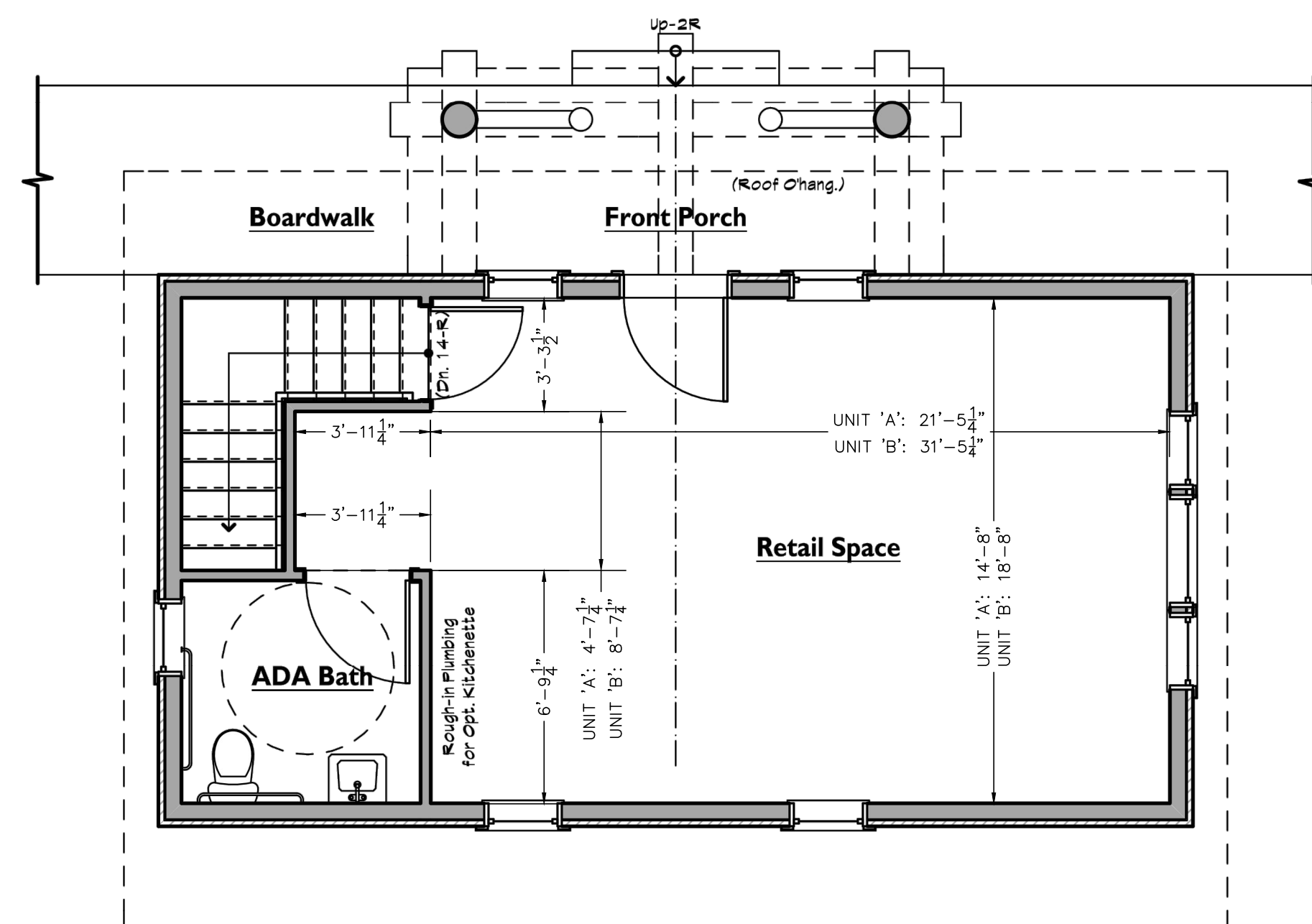
A PART OF THE NORTHWEST 1/4 OF SECTION 34,  
TOWNSHIP 7 NORTH, RANGE 1 EAST, SLB&M, U.S. SURVEY  
WEBER COUNTY, UTAH



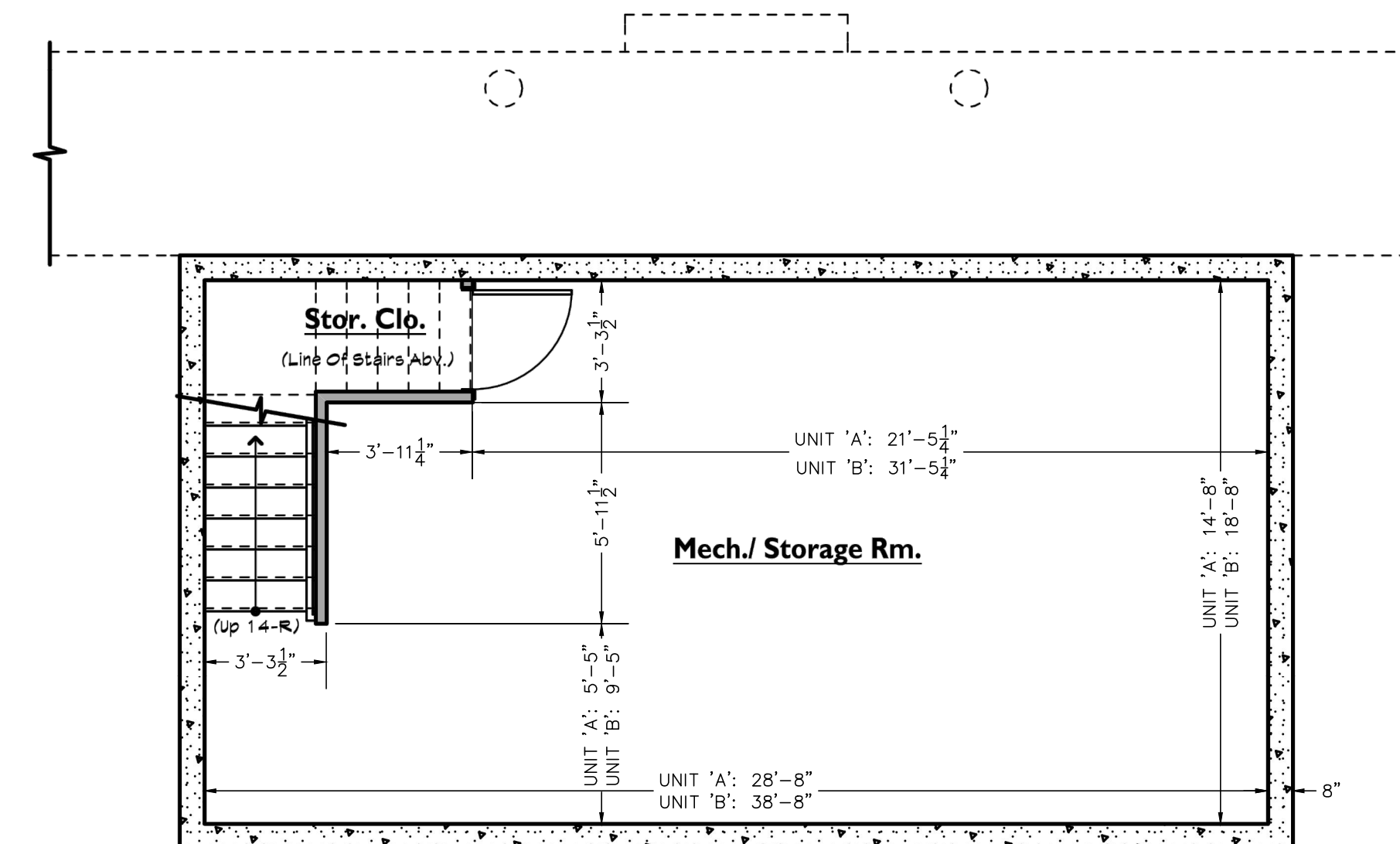
**A B** First Floor Plan - Front Entry (Log Veneer)  
NOT TO SCALE



**A B** Basement Plan C  
NOT TO SCALE



**A B** First Floor Plan - Side Entry (Log Veneer)  
NOT TO SCALE



**A B** Basement Plan D  
NOT TO SCALE

Prepared By:		<b>COUNTY RECORDER</b>	
ENTRY NO. _____ FEE PAID _____		RECORDED _____ AT _____	
IN _____ BOOK OF OFFICIAL RECORDS, PAGE _____ RECORDED _____		FOR _____	
BY: _____		COUNTY RECORDER	
_____		DEPUTY	

**Gardner Engineering**

PLANNING  
CIVIL ENGINEERING  
LAND SURVEYING

5875 South Adams Ave, Parkway, Suite 200 • Ogden, UT 84405  
Phone (801) 476-0202 • Fax (801) 476-0066

[www.gardnerengineering.net](http://www.gardnerengineering.net)