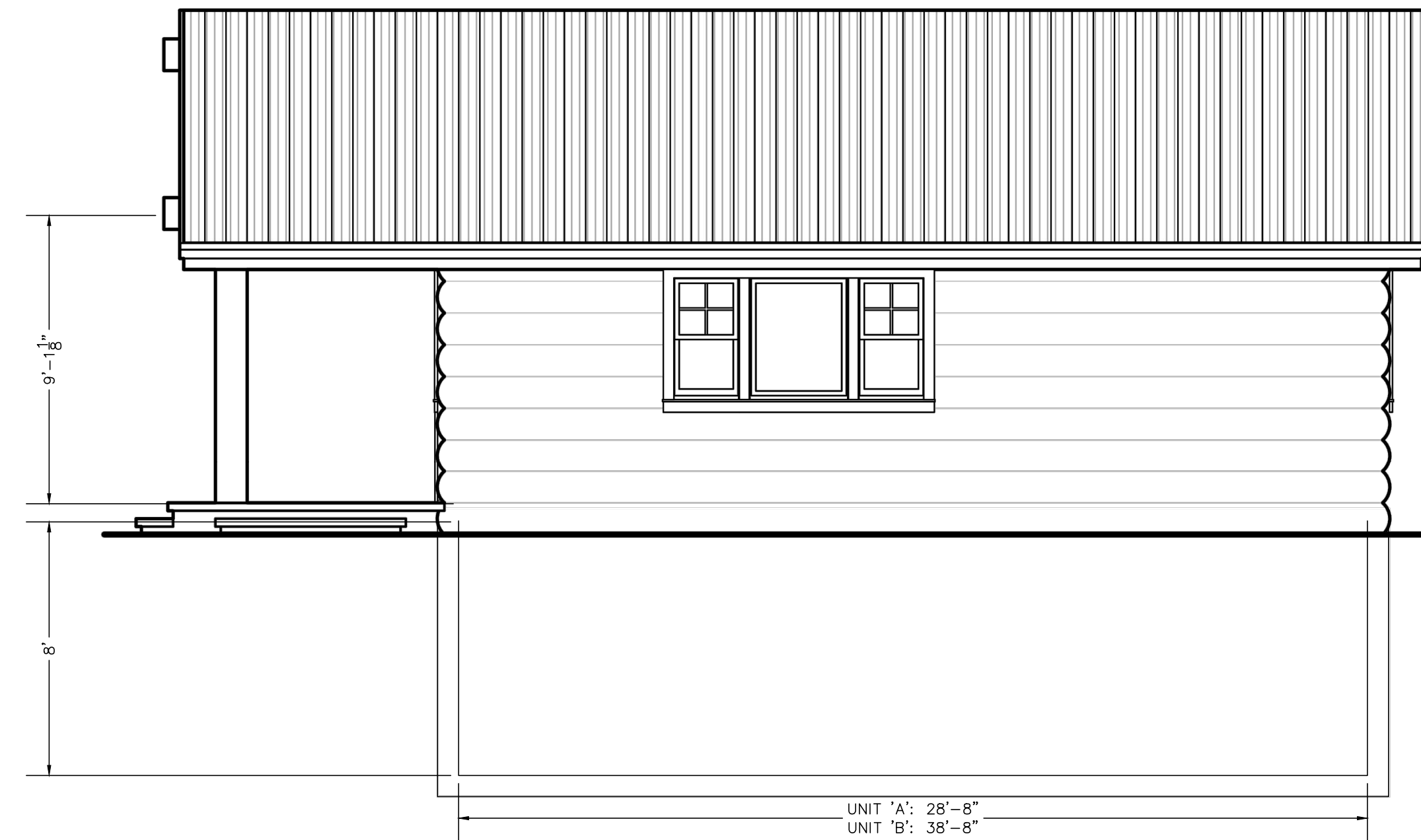


LITTLE BEAR SUBDIVISION LOT 3, 1ST AMENDMENT

A PART OF THE NORTHWEST 1/4 OF SECTION 34,
TOWNSHIP 7 NORTH, RANGE 1 EAST, SLB&M, U.S. SURVEY
WEBER COUNTY, UTAH



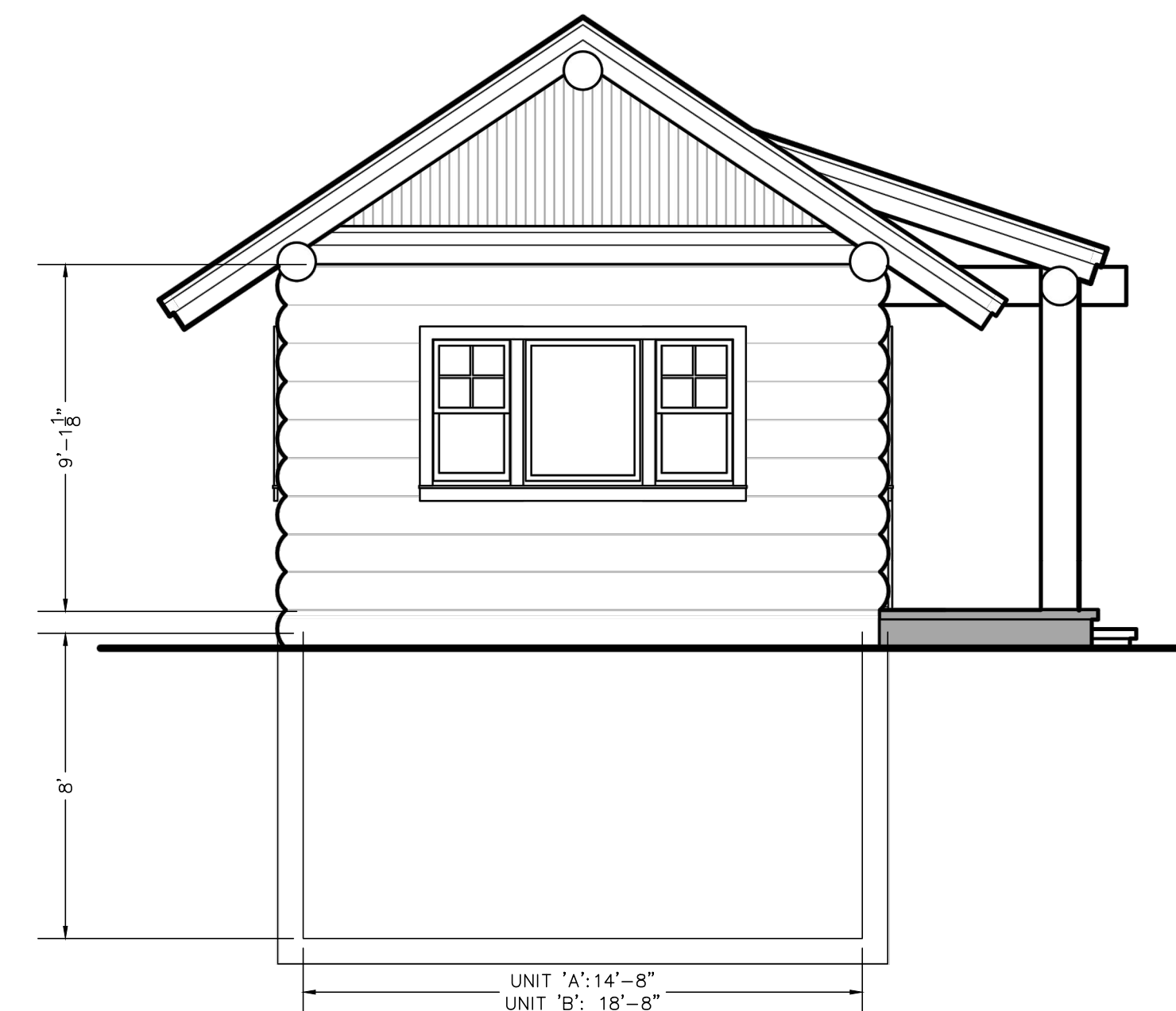
A B Front Entry Elevation (Log Veneer)
NOT TO SCALE




A B Front Entry - Side Elevation (Log Veneer)
NOT TO SCALE



A B Side Entry Elevation (Log Veneer)
NOT TO SCALE



A B Side Entry - Front Elevation (Log Veneer)
NOT TO SCALE

Prepared By:  Gardner Engineering 5875 South Adams Ave, Parkway, Suite 200 • Ogden, UT 84405 Phone (801) 476-0202 • Fax (801) 476-0066 www.gardnerengineering.net	COUNTY RECORDER ENTRY NO. _____ FEE PAID _____ _____ FILED FOR RECORD AND RECORDED _____ AT IN _____ BOOK OF OFFICIAL RECORDS, PAGE _____ RECORDED FOR _____ BY: _____ COUNTY RECORDER _____ DEPUTY
	> PLANNING > CIVIL ENGINEERING > LAND SURVEYING