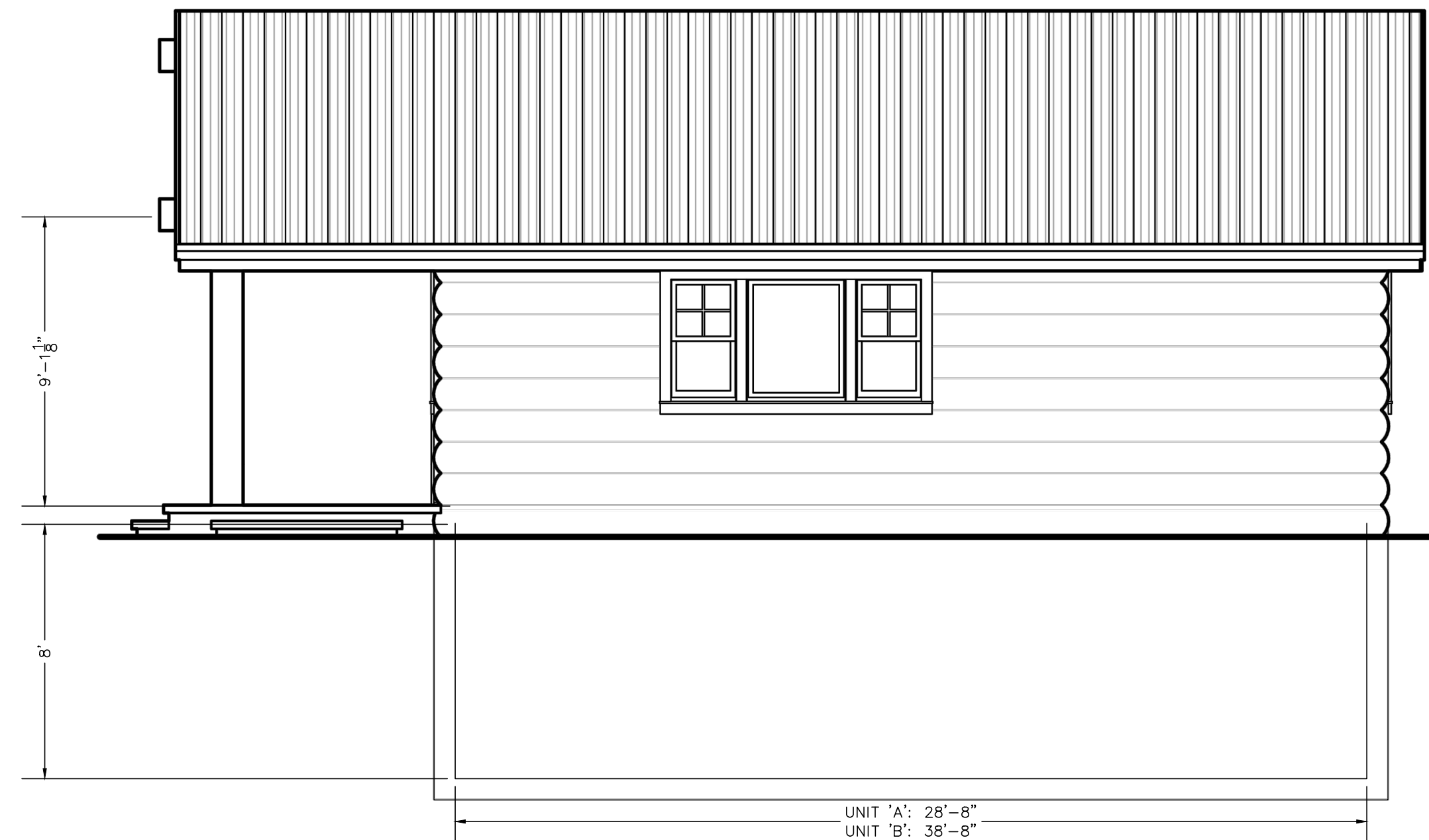


LITTLE BEAR SUBDIVISION LOT 3, 1ST AMENDMENT

A PART OF THE NORTHWEST 1/4 OF SECTION 34,
TOWNSHIP 7 NORTH, RANGE 1 EAST, SLB&M, U.S. SURVEY
WEBER COUNTY, UTAH
JUNE 2012



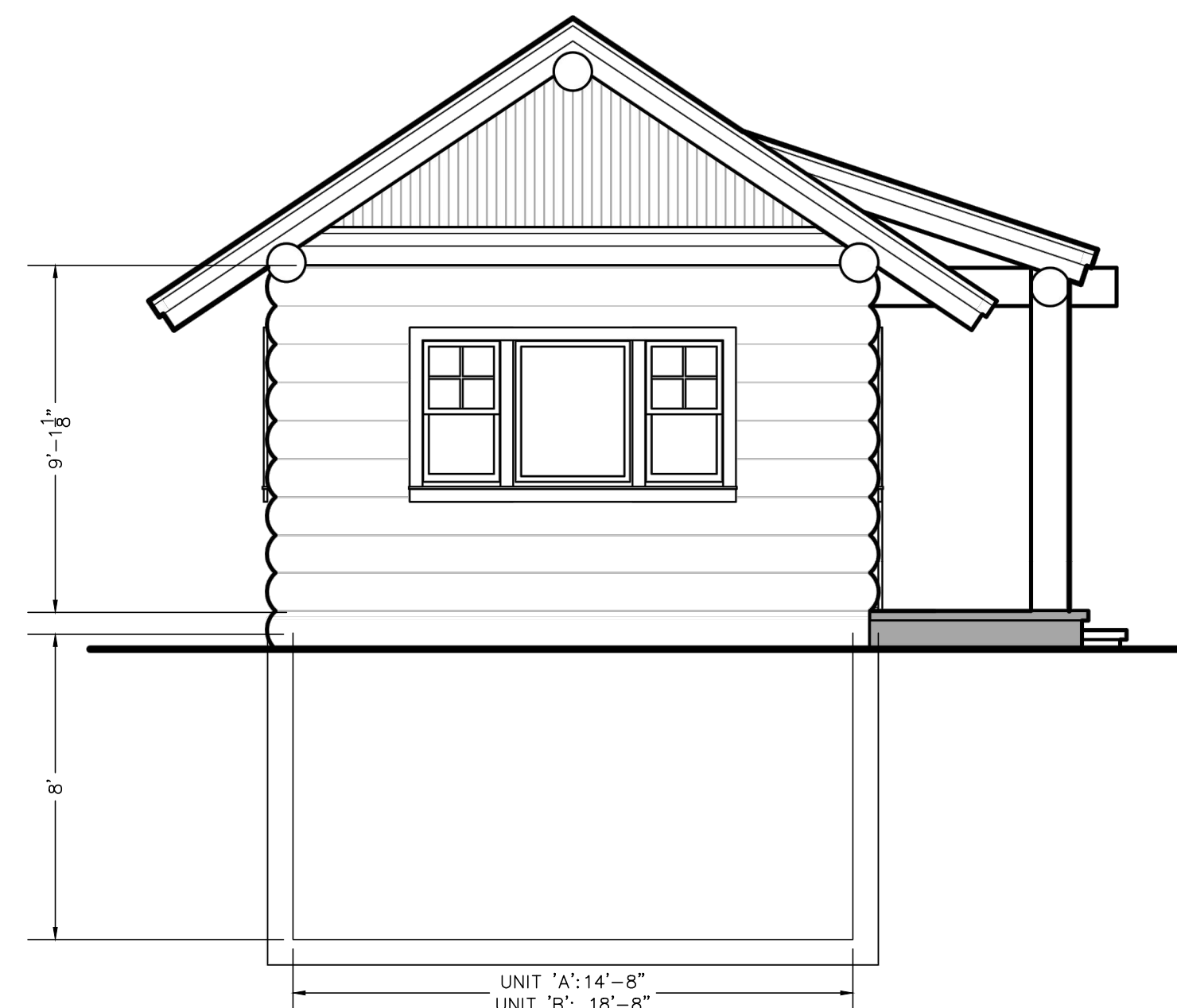
① Front Entry Elevation (Log Veneer)



① Front Entry - Side Elevation (Log Veneer)



① Side Entry Elevation (Log Veneer)



① Side Entry - Front Elevation (Log Veneer)

0 N/A N/A
Scale in Feet
(NTS)

Prepared By:



5875 South Adams Ave. Parkway, Suite 200 • Ogden, UT 84405
Phone (801) 476-0202 • Fax (801) 476-0066

www.gardnerengineering.net

COUNTY RECORDER

ENTRY NO. _____ FEE PAID _____
FILED FOR RECORD AND
RECORDED _____, AT
IN _____ BOOK OF OFFICIAL
RECORDS, PAGE _____, RECORDED
FOR _____

COUNTY RECORDER

BY: _____
DEPUTY