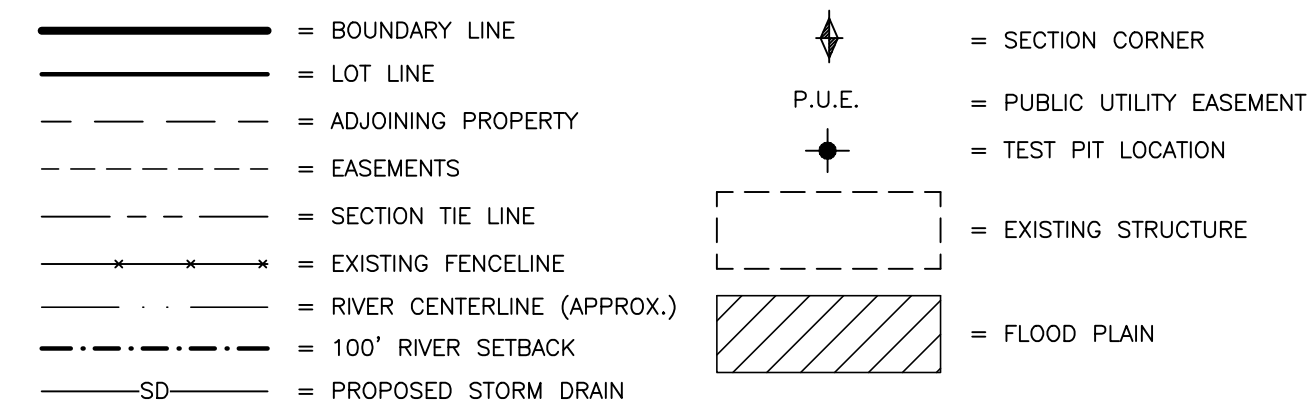


CURVE TABLE

#	RADIUS	ARC LENGTH	CHD. LENGTH	TANGENT	CHD. BEARING	DELTA
C1	267.00'	125.04'	123.90'	63.69'	N72°33'22"E	26°49'57"
C2	300.00'	140.49'	139.21'	71.56'	S72°33'22"W	26°49'57"
C3	333.00'	155.95'	154.53'	79.43'	S72°33'22"W	26°49'57"
C4	333.00'	182.15'	179.89'	93.42'	N74°48'37"E	31°20'27"
C5	300.00'	164.10'	162.06'	84.16'	N74°48'37"E	31°20'27"
C6	267.00'	146.05'	144.23'	74.90'	S74°48'37"W	31°20'27"
C7	208.00'	189.33'	183.40'	102.17'	S65°21'34"E	52°19'10"
C8	175.00'	159.80'	154.31'	85.96'	N63°21'34"W	52°19'10"
C9	142.00'	129.67'	125.21'	69.75'	N63°21'34"W	52°19'10"
C10	30.00'	22.08'	21.58'	11.57'	N58°17'02"W	42°10'08"
C11	53.00'	81.61'	74.33'	50.41'	S36°51'31"E	85°01'08"
C12	55.00'	97.06'	84.95'	66.85'	S56°12'28"W	101°06'46"
C13	55.00'	75.07'	69.38'	44.70'	S34°08'02"E	78°12'17"
C14	30.00'	22.08'	21.58'	11.57'	N16°06'56"W	42°10'08"

LEGEND

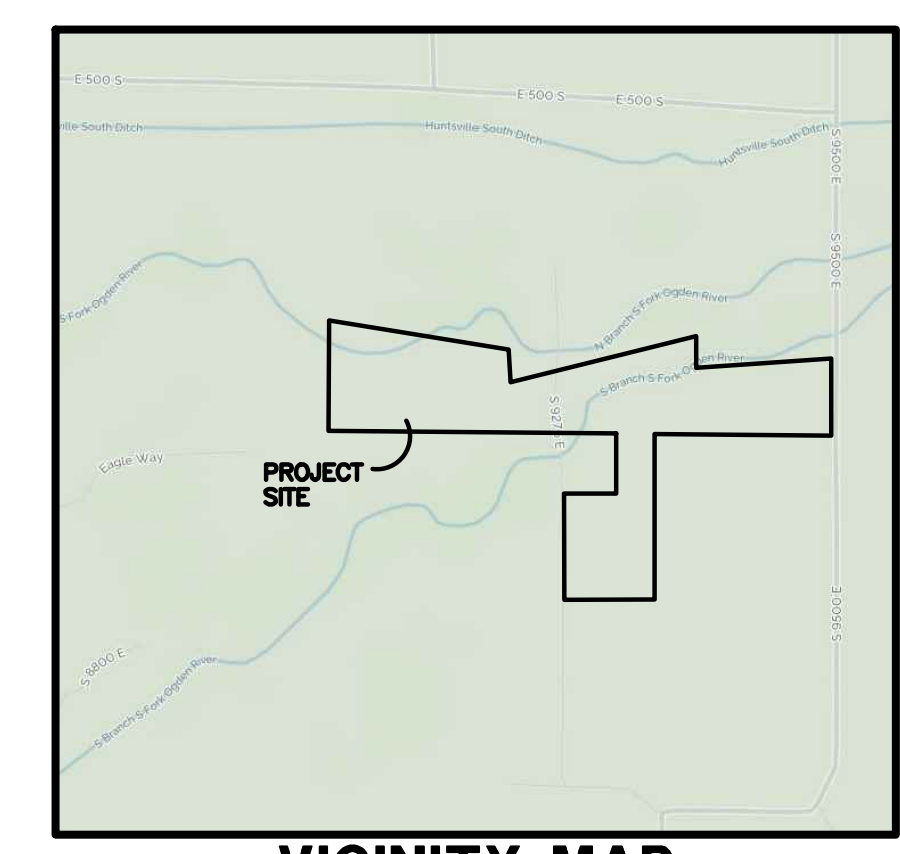


BOUNDARY DESCRIPTION

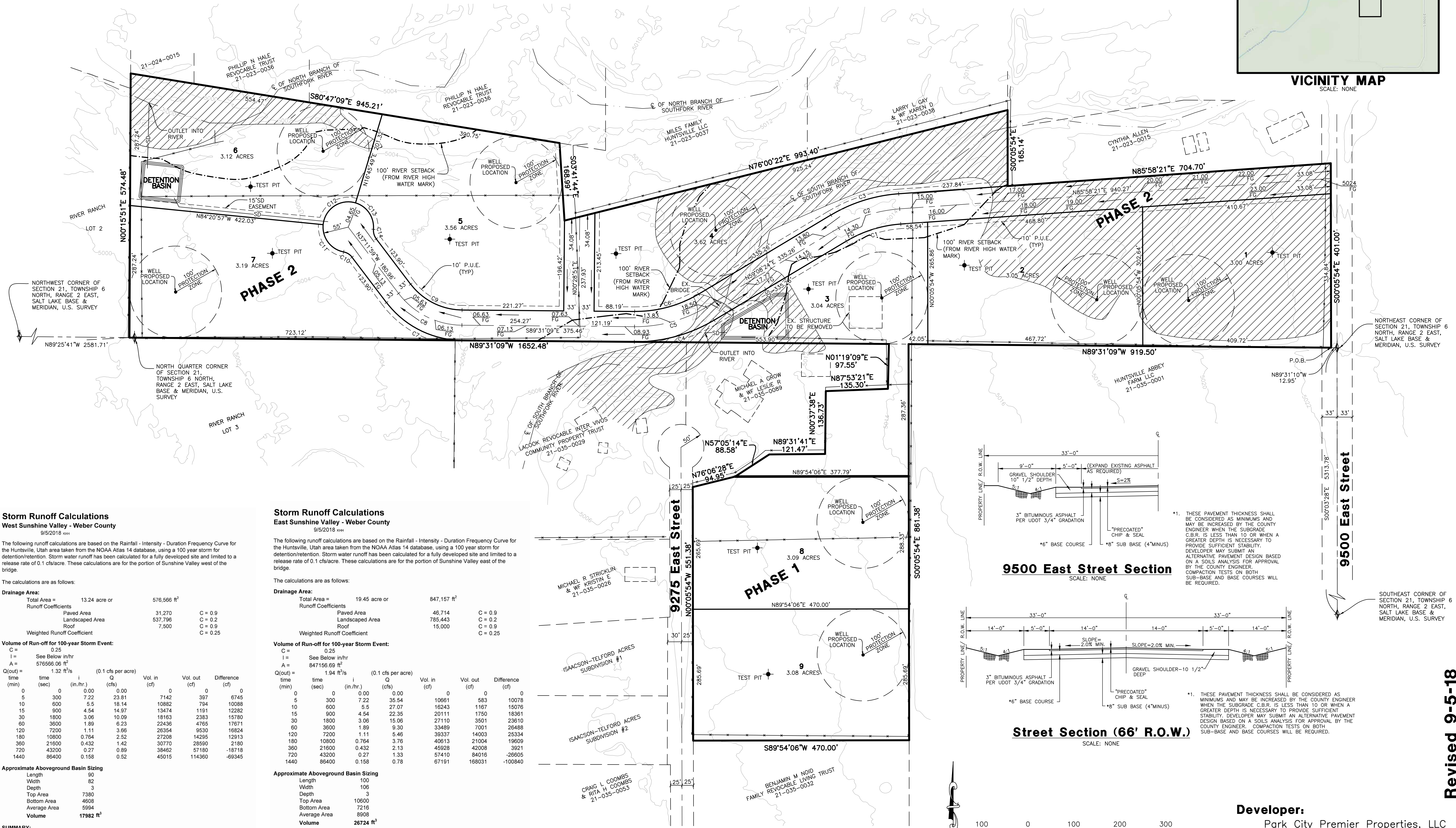
PART OF THE SOUTHEAST QUARTER OF SECTION 16 AND THE NORTHWEST QUARTER OF SECTION 21, T.6N., RANGE 2 EAST, SALT LAKE & MERIDIAN, U.S. SURVEY DESCRIBED AS FOLLOWS:
 BEGINNING AT A POINT ON THE NORTH SECTION LINE OF SAID SECTION 21, SAID POINT BEING N89°31'10"W ALONG SAID SECTION LINE 12.95 FEET FROM THE NORTHEAST CORNER OF SAID SECTION 21; THENCE N89°31'09"W 919.50 FEET; THENCE S00°05'54"E 861.38 FEET; THENCE S89°54'06"W 470.00 FEET; THENCE N00°05'54"W 551.38 FEET; THENCE N76°06'28"E 94.95 FEET; THENCE N57°05'14"E 88.58 FEET; THENCE N89°31'41"E 121.47 FEET; THENCE N00°37'38"E 136.73 FEET; THENCE N87°53'21"E 135.30 FEET; THENCE N01°19'09"E 97.55 FEET; THENCE N89°31'09"W 1652.48 FEET; THENCE N00°15'51"E 574.48 FEET; THENCE S80°47'09"E 945.21 FEET; THENCE S03°41'44"E 168.99 FEET; THENCE N76°00'22"E 993.40 FEET; THENCE S00°05'54"E 165.14 FEET; THENCE N85°58'21"E 704.70 FEET; THENCE S00°05'54"E 401.00 FEET TO THE POINT OF BEGINNING.
 CONTAINING 1423723 SQUARE FEET OR 32.684 ACRES MORE OR LESS

NOTES

- CONTOURS ARE SHOWN IN TWO FOOT INTERVALS
- DUE TO TOPOGRAPHY AND LOCATION OF THE SUBDIVISION, ALL OWNERS WILL ACCEPT RESPONSIBILITY FOR ANY STORM WATER RUNOFF FROM THE ROAD ADJACENT TO THIS PROPERTY UNTIL CURB AND GUTTER IS INSTALLED.



VICINITY MAP
SCALE: NONE



Storm Runoff Calculations
West Sunshine Valley - Weber County
9/5/2018

The following runoff calculations are based on the Rainfall - Intensity - Duration Frequency Curve for the Huntsville, Utah area taken from the NOAA Atlas 14 database, using a 100 year storm for detention/retention. Storm water runoff has been calculated for a fully developed site and limited to a release rate of 0.1 cfs/acre. These calculations are for the portion of Sunshine Valley west of the bridge.

The calculations are as follows:

Drainage Area:	Total Area = 13.24 acre or 576,566 ft ²	
Runoff Coefficients	Paved Area 31,270 C = 0.9	
	Landscaped Area 537,796 C = 0.2	
	Roof 7,500 C = 0.9	
Weighted Runoff Coefficient		C = 0.25

Volume of Run-off for 100-year Storm Event:

time (min)	time (sec)	i (in./hr.)	Q (cfs)	Vol. in (cf)	Vol. out (cf)	Difference (cf)
0	0	0.00	0.00	0	0	0
5	300	7.22	23.81	7142	397	6745
10	600	5.5	18.14	10882	794	10088
15	900	4.54	14.97	13474	1191	12282
30	1800	3.06	10.63	19163	2383	15780
60	3600	1.89	6.23	22436	4765	17671
120	7200	1.11	3.66	26354	9530	16824
180	10800	0.764	2.52	27208	14295	12913
360	21600	0.432	1.42	30770	28590	2180
720	43200	0.27	0.89	39462	57180	-18718
1440	86400	0.158	0.52	45015	114360	-69345

Approximate Aboveground Basin Sizing

Length	90
Width	82
Depth	3
Top Area	7380
Bottom Area	4608
Average Area	5994
Volume	17982 ft ³

SUMMARY:
The required storage volume is **17,671 cubic feet**

Storm Runoff Calculations
East Sunshine Valley - Weber County
9/5/2018

The following runoff calculations are based on the Rainfall - Intensity - Duration Frequency Curve for the Huntsville, Utah area taken from the NOAA Atlas 14 database, using a 100 year storm for detention/retention. Storm water runoff has been calculated for a fully developed site and limited to a release rate of 0.1 cfs/acre. These calculations are for the portion of Sunshine Valley east of the bridge.

The calculations are as follows:

Drainage Area:	Total Area = 19.45 acre or 847,157 ft ²	
Runoff Coefficients	Paved Area 46,714 C = 0.9	
	Landscaped Area 785,443 C = 0.2	
	Roof 15,000 C = 0.9	
Weighted Runoff Coefficient		C = 0.25

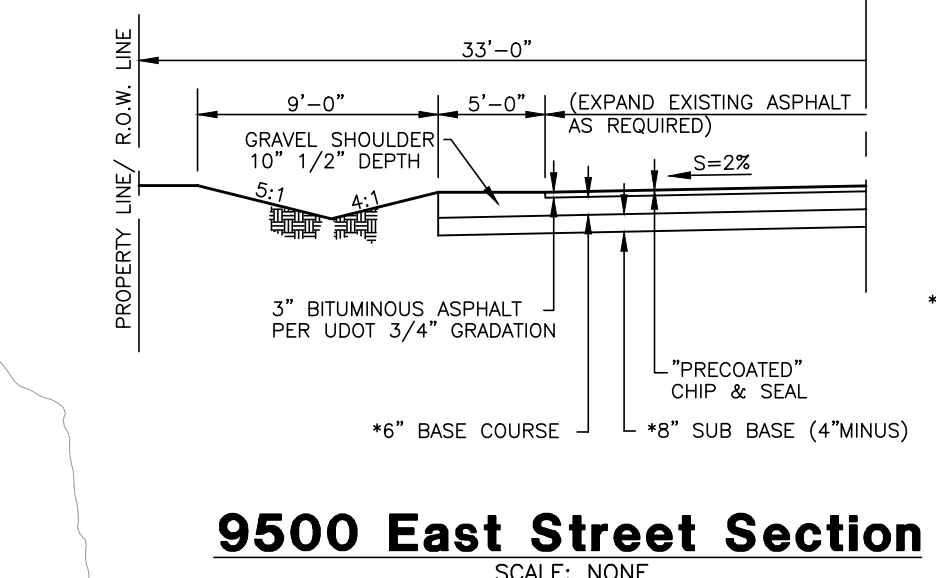
Volume of Run-off for 100-year Storm Event:

time (min)	time (sec)	i (in./hr.)	Q (cfs)	Vol. in (cf)	Vol. out (cf)	Difference (cf)
0	0	0.00	0.00	0	0	0
5	300	7.22	35.54	10661	583	10078
10	600	5.5	27.07	16243	1167	15076
15	900	4.54	22.35	20111	1750	18361
30	1800	3.06	15.06	27110	3501	23609
60	3600	1.89	9.30	33489	7001	26488
120	7200	1.11	5.46	39337	14003	25334
180	10800	0.764	3.76	40813	21004	19809
360	21600	0.432	2.13	45928	42008	3921
720	43200	0.27	1.33	57410	84016	-26605
1440	86400	0.158	0.78	67191	168031	-100840

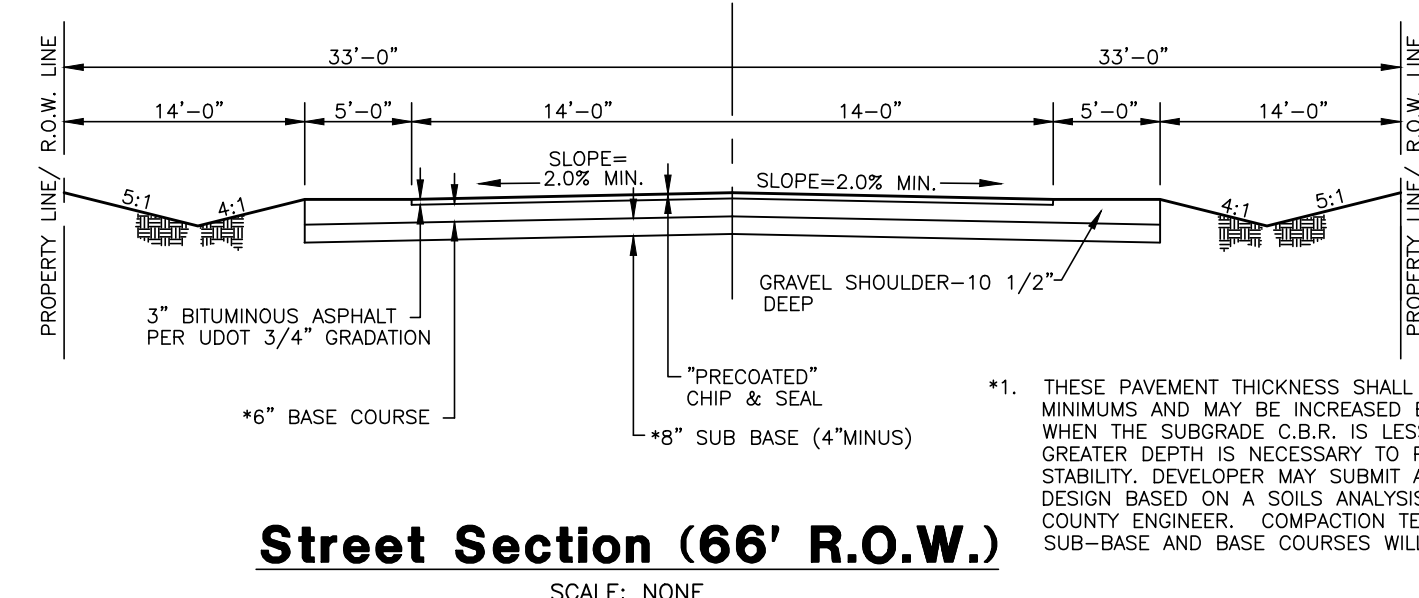
Approximate Aboveground Basin Sizing

Length	100
Width	106
Depth	3
Top Area	10600
Bottom Area	7216
Average Area	8908
Volume	26724 ft ³

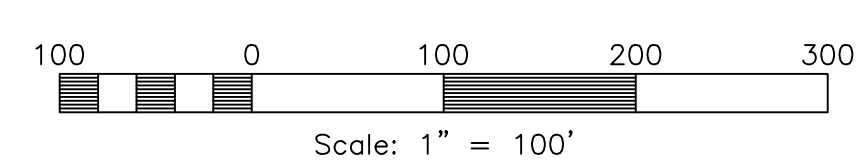
SUMMARY:
The required storage volume is **26,488 cubic feet**



9500 East Street Section
SCALE: NONE



Street Section (66' R.O.W.)
SCALE: NONE



Scale: 1" = 100'

Sunshine Valley Estates

Weber County, Utah

Reeve & Associates, Inc.
5160 SOUTH 1500 WEST RIVERDALE, UTAH 84405
TEL: (801) 821-3100 FAX: (801) 821-2666 www.reeve-assoc.com
LAND PLANNERS • CIVIL ENGINEERS • LAND SURVEYORS
TRA ARCHITECTS • STRUCTURAL ENGINEERS • LANDSCAPE ARCHITECTS

REVISIONS

DATE	DESCRIPTION	BY
8-31-2018	City Comments	

Sunshine Valley Estates
PART OF THE SE 1/4 OF SECTION 16 AND THE NW 1/4 OF SECTION 21, T.6N., R.2E, S.13 & M., U.S. SURVEY
WEBER COUNTY, UTAH

Preliminary Plan

Revised 9-5-18

Project Info.
Engineer: N. Reeve
Designer: C. Cave
Begin Date: Nov 28, 2017
Name: Sunshine Valley Estates
Number: 4825-21

Sheet	1
1	Sheets