

2018 Xterra Port Ramp Marina Site Map / Signage

1. Xterra Swim Start arch x 2– see pic. Apprx 15' high 15' wide
2. Xterra Transition Fencing – see pic. Transition is approx 100' by 200' – Fencing is 4' high
3. 4'x3' a frame signs for Public Water Station as outline as # 6 on site map
4. 10' blade Xterra Flags x 10 – see pic.
5. 2 – Xterra parking Signs 7'x3' – Road signs at entrance to parking area

2018 Xterra Pan American
Championship
Swim Start / T1 /Bike Out
Port Ramp Marina

LZ

STAFF
PARKING

Staff / Production
Entrance

Public / Volunteer
PARKING

T1

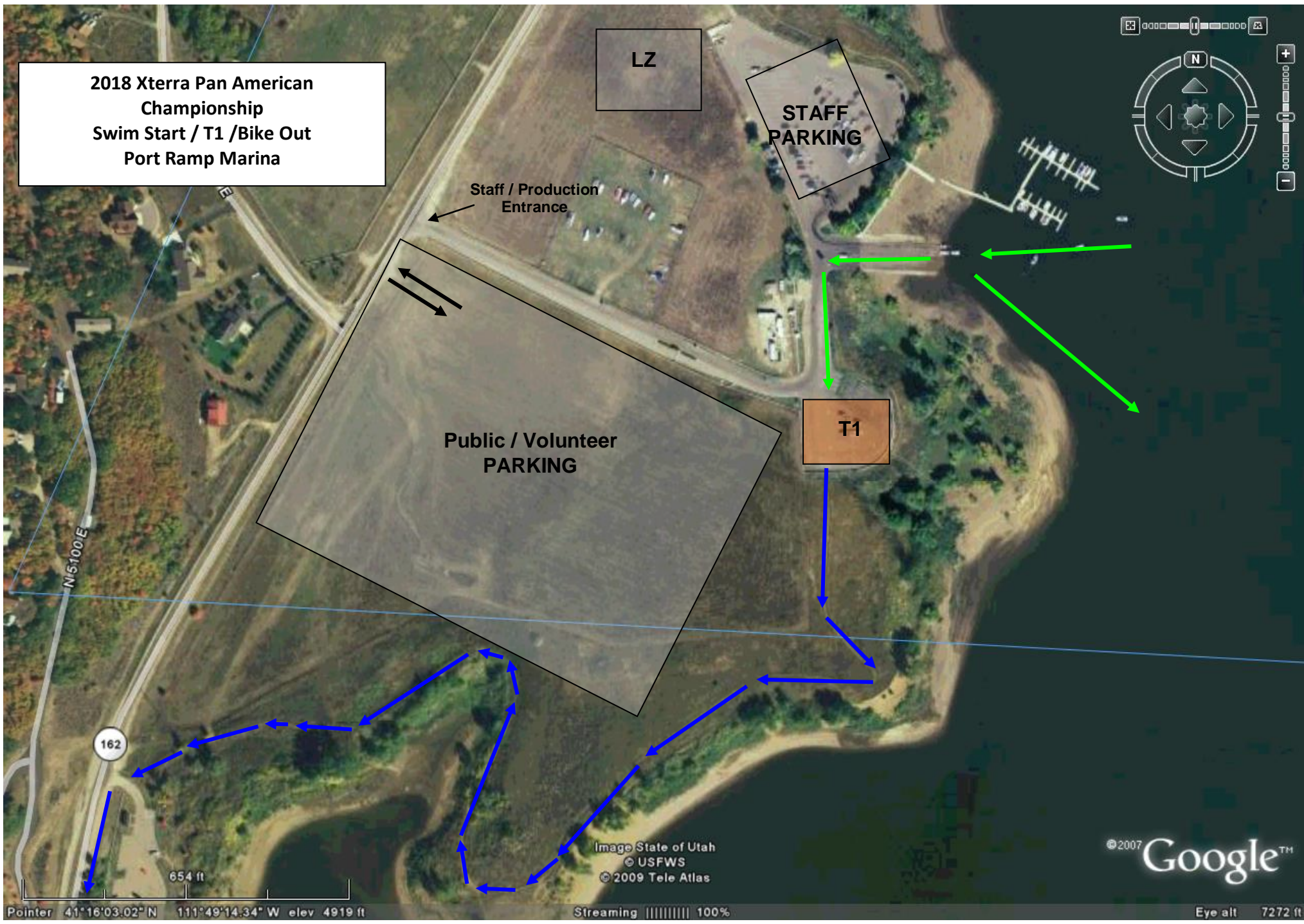
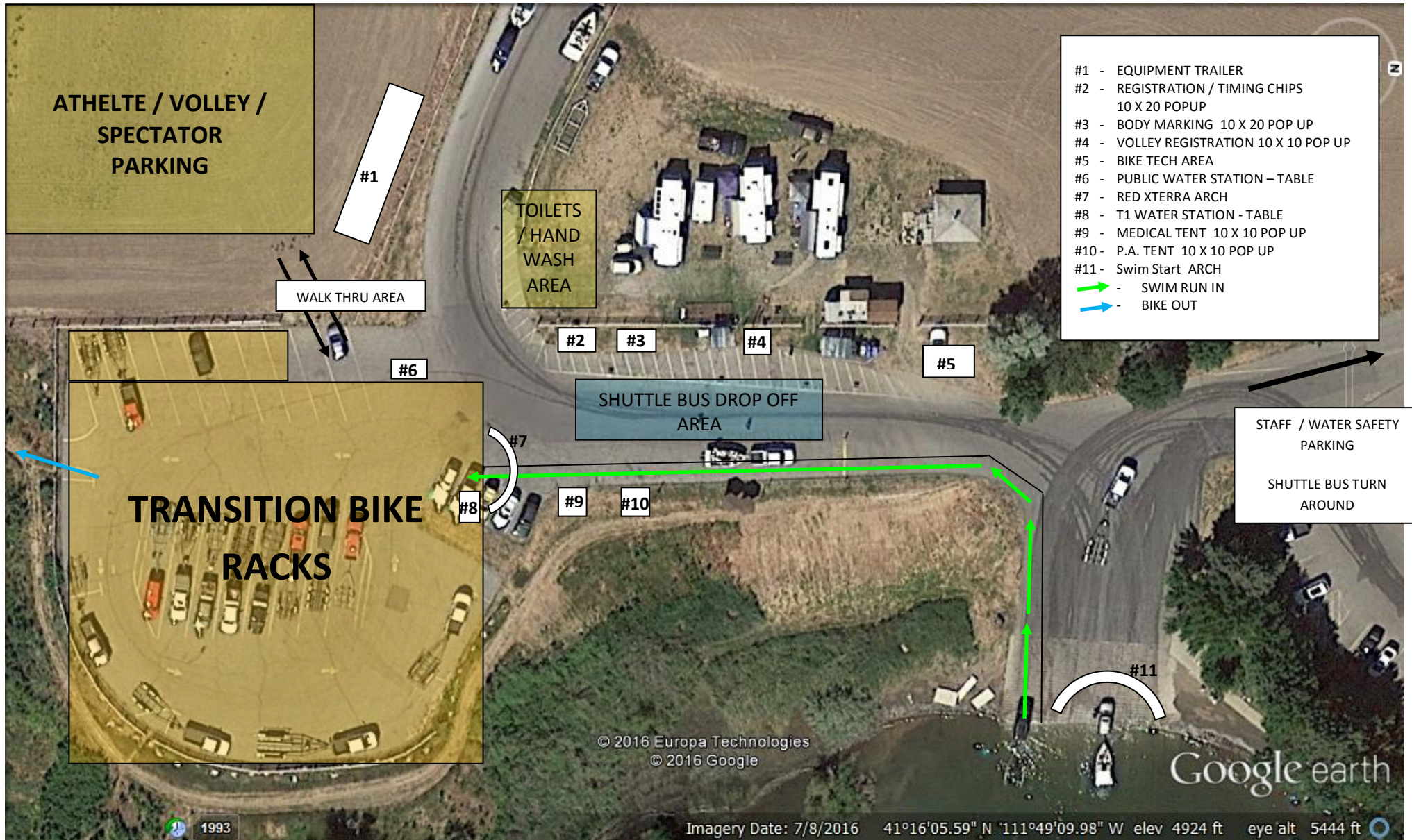


Image State of Utah
© USFWS
© 2009 Tele Atlas

©2007 Google™

2018 Xterra Pan Am Championship – Layout #2 – Port Ramp Marina







Xterra

