

EASTWOOD SUBDIVISION NO. 10

A PART OF THE W 1/2 OF SECTION 24, T5N, R1W, SLB & M, U.S. SURVEY

WEBER COUNTY, UTAH

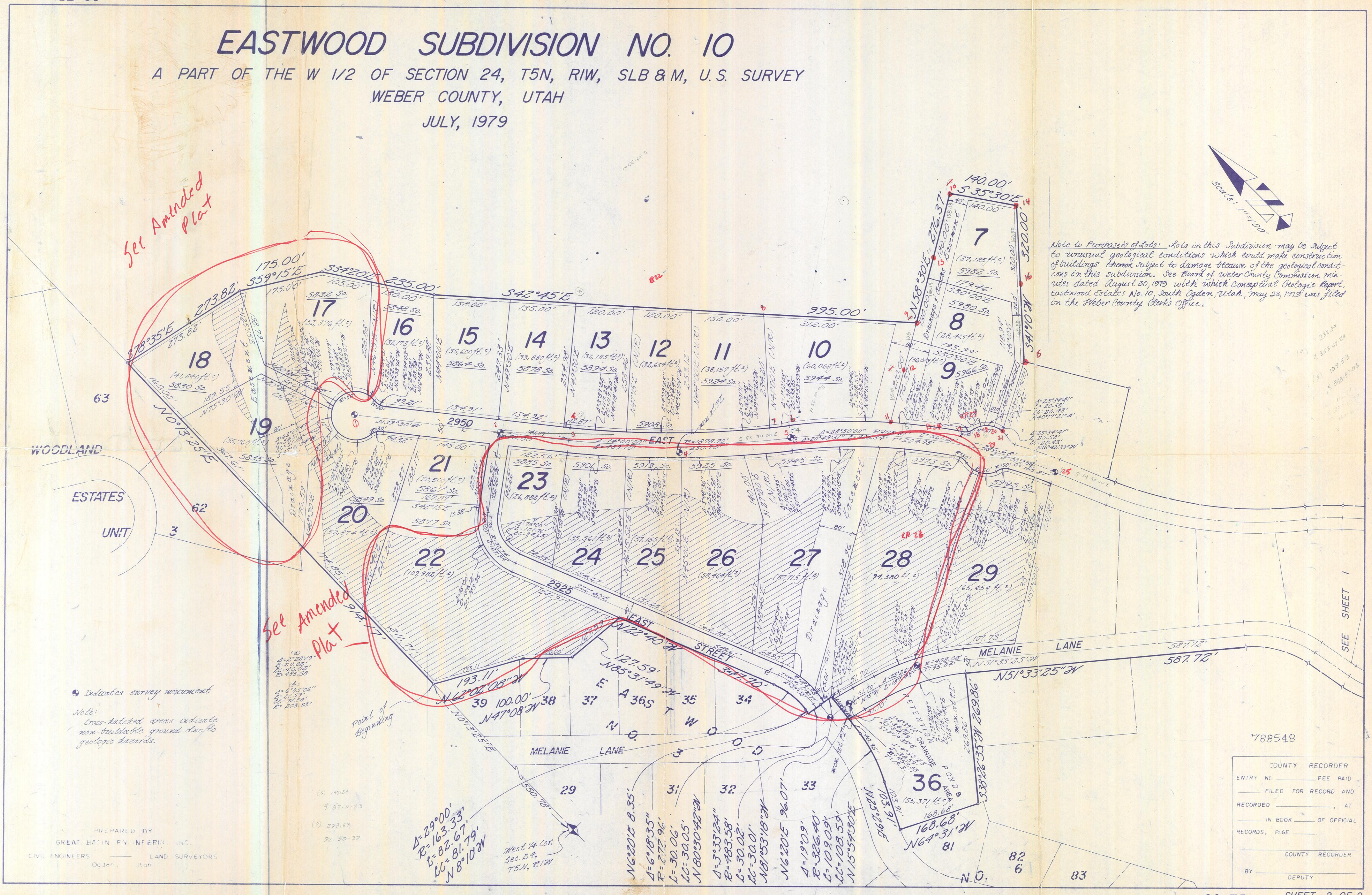
JULY, 1979



Note to Purchasers of Lots: Lots in this Subdivision may be subject to unusual geological conditions which could make construction of buildings thereon subject to damage because of the geological conditions in this subdivision. See Board of Weber County Commission minutes dated August 30, 1979 with which Conceptual Geologic Report, Eastwood Estates No. 10, South Ogden, Utah, May 23, 1979 was filed in the Weber County Clerk's Office.

See Amended Plat

See Amended Plat



Note:
Indicates survey monument
Cross-hatched areas indicate non-buildable ground due to geologic hazards.

PREPARED BY
GREAT BASIN ENGINEERING, INC.
CIVIL ENGINEERS LAND SURVEYORS
Ogden, Utah

788548

COUNTY RECORDER
ENTRY NO. _____ FEE PAID _____
FILED FOR RECORD AND
RECORDED _____ AT _____
IN BOOK _____ OF OFFICIAL
RECORDS, PAGE _____
BY _____ COUNTY RECORDER
DEPUTY