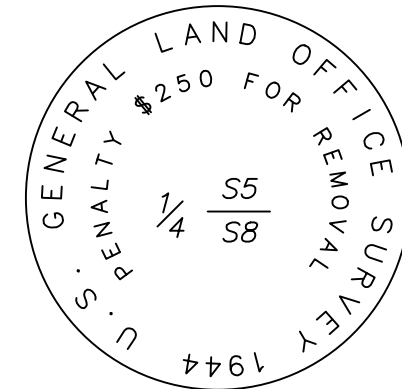
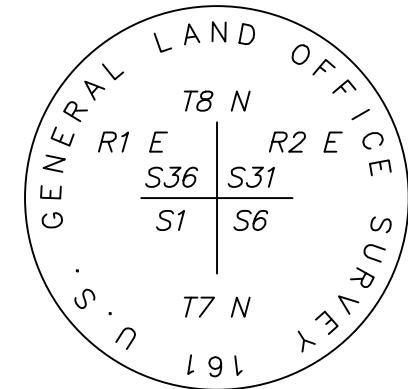
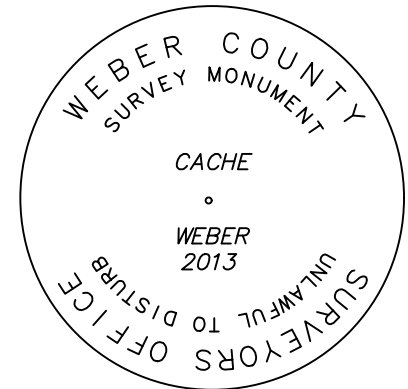


OVERLOOK AT POWDER MOUNTAIN PHASE 3 AMENDING A PORTION OF PARCEL D, OF SUMMIT EDEN PHASE 1B

LOCATED IN THE NORTHEAST QUARTER OF SECTION 8,
AND THE SOUTHEAST QUARTER OF SECTION 5,
TOWNSHIP 7 NORTH, RANGE 2 EAST
SALT LAKE BASE & MERIDIAN,
WEBER COUNTY, UTAH
MARCH 2019

The remaining parcel will show a note:
□ Remaining Agricultural Parcel, Not
Approved for Development." WCO
106-1-8(c)(3).



DETAIL "A"

DETAIL "B"

DETAIL "C"

NORTHEAST CORNER SECTION 1,
TOWNSHIP 7 NORTH, RANGE 1 EAST
SALT LAKE BASE AND MERIDIAN
FOUND GLO 1944, 4" BRASS CAP,
GOOD CONDITION
6" ABOVE GROUND
DETAIL "B"

BASIS OF BEARINGS
N 89°55'51" W 1381.07'
(N 89°56'05" W 1380.98' RECORD)

FOUND WEBER COUNTY LINE
MONUMENT PER WEBER COUNTY
SURVEYOR, 4" BRASS CAP 2013,
GOOD CONDITION
FLUSH IN CONCRETE
DETAIL "A"

NORTH QUARTER CORNER SECTION
8, TOWNSHIP 7 NORTH, RANGE 2 EAST
SALT LAKE BASE AND MERIDIAN,
FOUND 1944 GLO 4" BRASS CAP,
GOOD CONDITION
6" ABOVE GROUND
DETAIL "C"

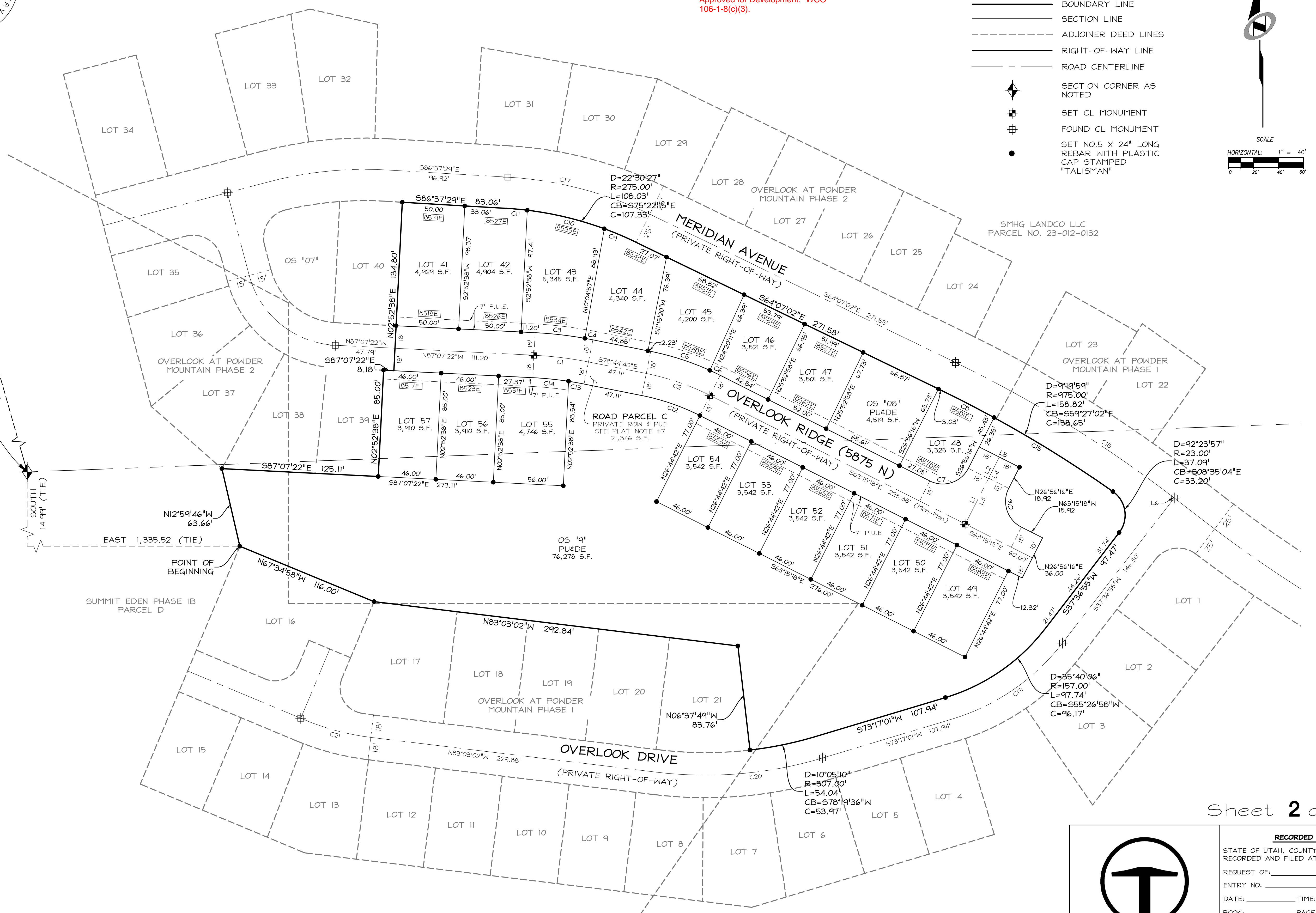
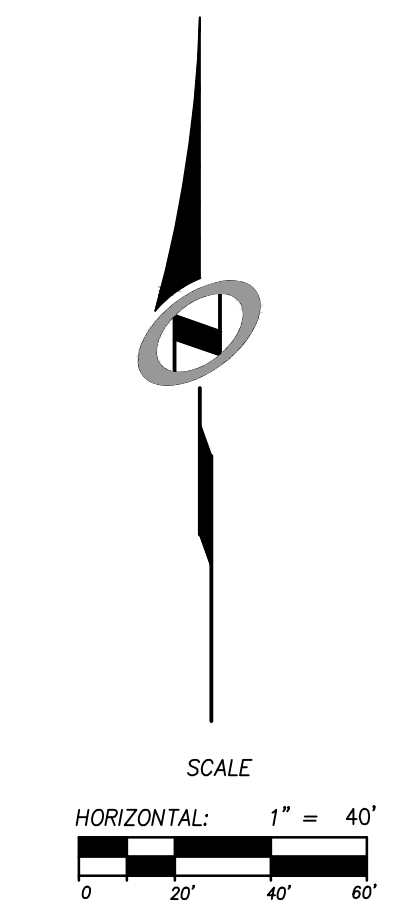
LINE	LENGTH	BEARING
L1	40.86	N26°56'16"E
L2	19.08	N26°56'16"E
L3	41.14	N26°56'16"E
L4	18.80	N26°56'16"E
L5	36.00	N63°15'18"W
L6	1.15	S52°23'05"E

CURVE	RADIUS	LENGTH	DELTA	BEARING	CHORD
C1	300.00	43.87	8°22'42"	N82°56'01"W	43.83
C2	200.00	54.07	15°24'22"	N70°59'59"W	53.90
C3	318.00	39.99	7°12'19"	N83°31'13"W	39.96
C4	318.00	6.51	1°10'23"	N79°19'51"W	6.51
C5	218.00	49.77	13°04'51"	N72°12'14"W	49.66
C6	218.00	9.16	2°24'31"	N64°27'33"W	9.16
C7	23.00	36.05	89°48'26"	N71°50'29"E	32.47
C8	975.00	46.97	2°45'37"	N62°44'13"W	46.97
C9	275.00	27.61	5°45'08"	N66°59'36"W	27.60
C10	275.00	63.46	13°13'21"	N76°28'50"W	63.32
C11	275.00	16.96	3°31'58"	N84°51'30"W	16.95
C12	182.00	49.20	15°24'22"	N70°59'59"W	49.05
C13	282.00	12.56	2°33'09"	N80°01'14"W	12.56
C14	282.00	28.67	5°49'34"	N84°12'35"W	28.66
C15	975.00	111.85	6°34'23"	N58°04'14"W	111.79
C16	23.00	36.21	90°11'34"	S18°09'31"E	32.58
C17	300.00	117.85	22°30'27"	S75°22'15"E	117.09
C18	1000.00	204.77	11°43'57"	S58°15'04"E	204.41
C19	175.00	108.94	35°40'06"	S55°26'58"W	107.19
C20	325.00	134.24	23°39'58"	S85°07'00"W	133.29
C21	200.00	55.02	15°45'43"	N75°10'10"W	54.85

SMHG PHASE I, LLC.
3632 N. WOLF CREEK DR.
EDEN, UT, 84310

LEGEND

- BOUNDARY LINE
- SECTION LINE
- ADJOINER DEED LINES
- RIGHT-OF-WAY LINE
- ROAD CENTERLINE
- SECTION CORNER AS NOTED
- SET CL MONUMENT
- FOUND CL MONUMENT
- SET NO.5 X 24" LONG REBAR WITH PLASTIC CAP STAMPED "TALISMAN"



TALISMAN
CIVIL CONSULTANTS

5217 SOUTH STATE STREET
SUITE 200
MURRAY, UT 84107
801.743.1300

RECORDED #
STATE OF UTAH, COUNTY OF WEBER,
RECORDED AND FILED AT THE
REQUEST OF:
ENTRY NO. _____
DATE: _____ TIME: _____
BOOK: _____ PAGE: _____
FEE \$ _____
WEBER COUNTY RECORDER