

NOTE: Bid documents should not be separated or issued as partial sets to subcontractors. Bidders are responsible for all portions of the documents that pertain to work covered by sub-bids. Bidder assumes full responsibility for error or misinterpretations resulting from partial sets of Bidding Documents by itself or any sub-bidder.

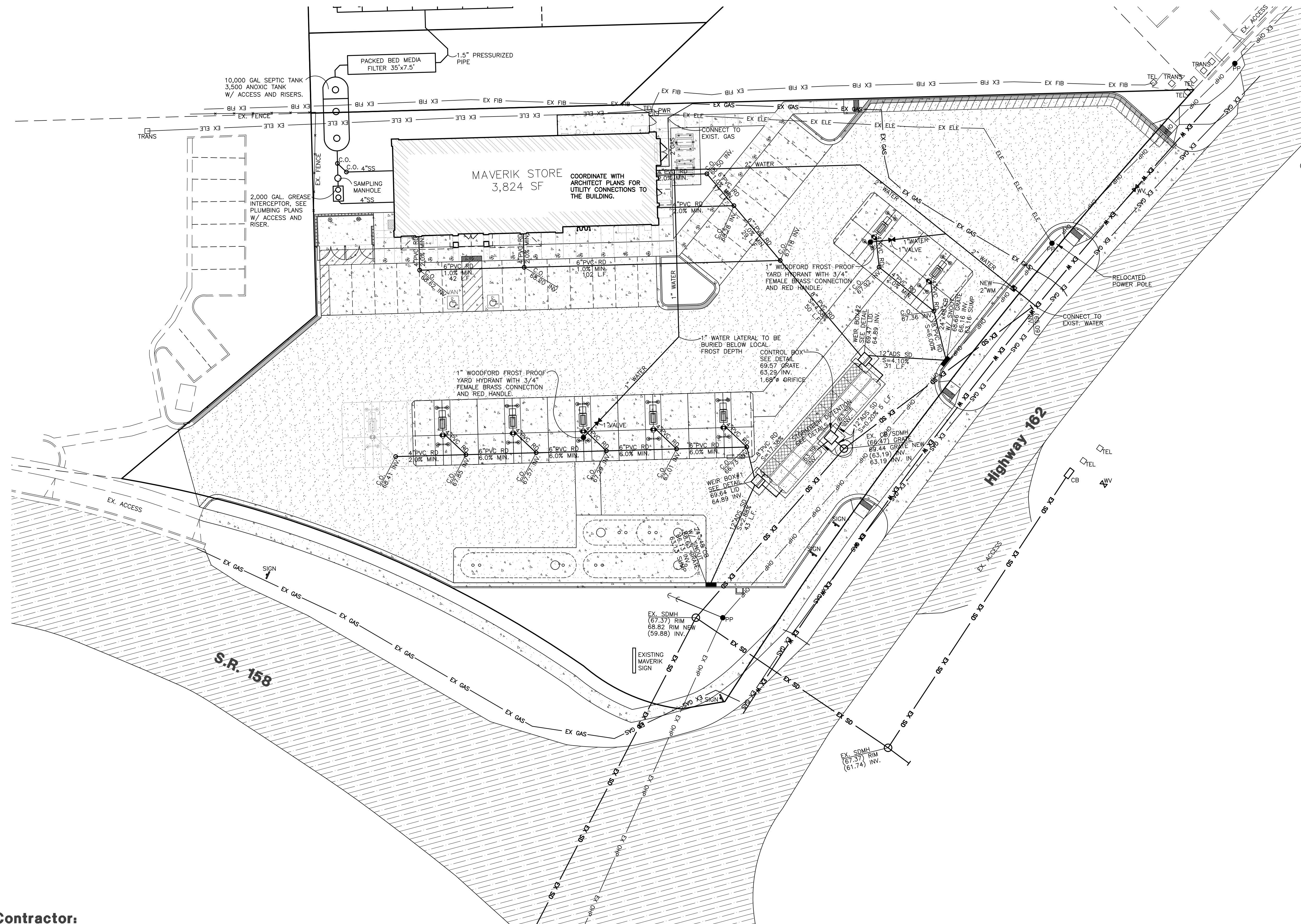
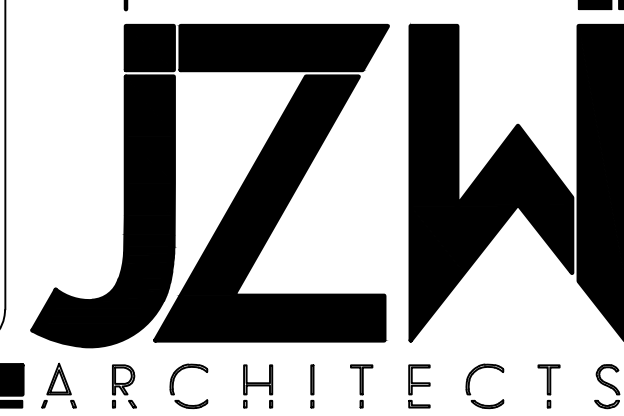
Conflicting information or errors found in the construction documents should be brought to the attention of the architect immediately. In the event of a conflict in the drawings, bidder should not assume the least expensive option will meet the project requirements.



MAVERIK, INC. STORE #250
5100 EAST & 2500 NORTH
EDEN, UTAH

UTILITY PLAN

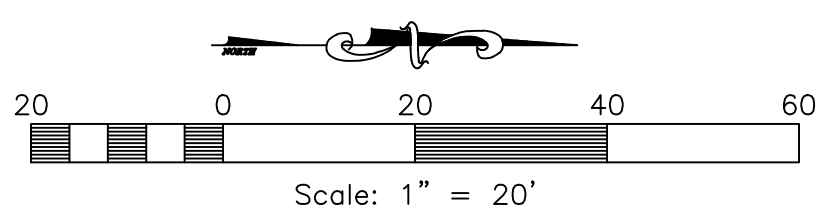
C8



Notice to Contractor:

THE CONTRACTOR IS SPECIFICALLY CAUTIONED THAT THE LOCATION AND/OR ELEVATION OF EXISTING UNDERGROUND UTILITIES AS SHOWN ON THESE PLANS ARE BASED UPON RECORDS OF THE VARIOUS UTILITY COMPANIES AND/OR MUNICIPALITIES AND, WHERE POSSIBLE, MEASUREMENTS TAKEN IN THE FIELD. THE INFORMATION IS NOT TO BE RELIED UPON AS BEING EXACT OR COMPLETE. THE CONTRACTOR MUST CALL THE APPROPRIATE UTILITY COMPANIES AT LEAST 48 HOURS BEFORE ANY EXCAVATION TO REQUEST EXACT FIELD LOCATION OF UTILITIES. IT SHALL BE THE RESPONSIBILITY OF THE CONTRACTOR TO RELOCATE ALL EXISTING UTILITIES WHICH CONFLICT WITH THE PROPOSED IMPROVEMENTS SHOWN ON THESE PLANS.

THE CONTRACTOR AGREES THAT THEY SHALL ASSUME SOLE AND COMPLETE RESPONSIBILITY FOR JOB SITE CONDITIONS DURING THE COURSE OF CONSTRUCTION OF THIS PROJECT, INCLUDING SAFETY OF ALL PERSONS AND PROPERTY. THIS REQUIREMENT SHALL APPLY CONTINUOUSLY AND NOT BE LIMITED TO NORMAL WORKING HOURS; AND THAT THE CONTRACTOR SHALL DEFEND, INDEMNIFY, AND HOLD THE OWNER AND THE ENGINEERS HARMLESS FROM ANY AND ALL LIABILITY, REAL OR ALLEGED, IN CONNECTION WITH THE PERFORMANCE OF WORK ON THIS PROJECT.



Note: Contractor to verify ALL Existing Utility Locations, Terminations and Invert Elevations.

Elevation Datum
SITE BENCHMARK #1:
BRASS CAP MONUMENT
NORTHING = 22717.10
EASTING = 15343.94
ELEVATION = 4978.61'

Elevation Datum
SITE BENCHMARK #2:
BRASS CAP MONUMENT
NORTHING = 22736.34
EASTING = 12676.29
ELEVATION = 4963.72'



5160 SOUTH 1500 WEST
RIVERDALE, UTAH 84405
TEL: (801) 621-3100
FAX: (801) 621-2666
www.reeve-assoc.com

LAND PLANNERS * CIVIL ENGINEERS
LAND SURVEYORS * TRAFFIC ENGINEERS
STRUCTURAL ENGINEERS * LANDSCAPE ARCHITECTS

PROJECT NUMBER: 5799-230
DRAWN BY: RWH
ENGINEER: JNR