

No.	Date	Description

NOTE: Bid documents should not be separated or issued as partial sets to subcontractors. Bidders are responsible for all portions of the documents that pertain to work covered by sub-bids. Bidder assumes full responsibility for error or misinterpretations resulting from partial sets of Bidding Documents by itself or any sub-bidder.

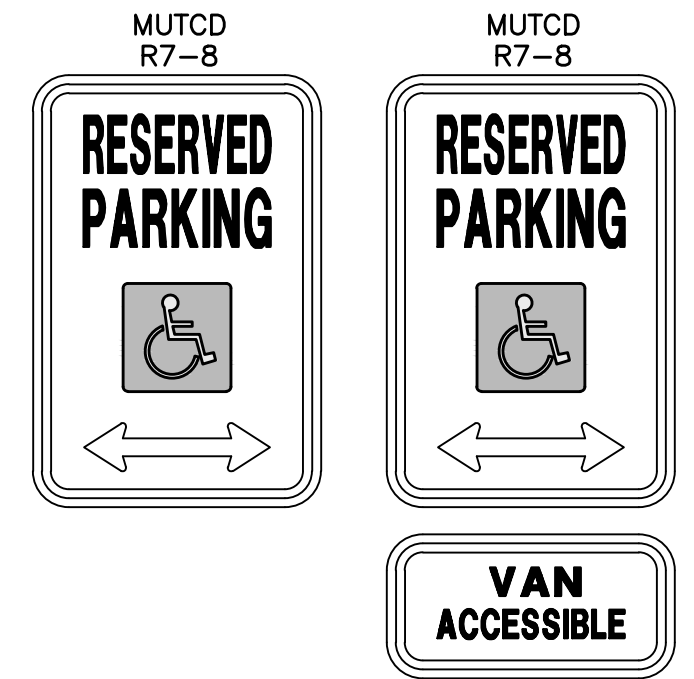
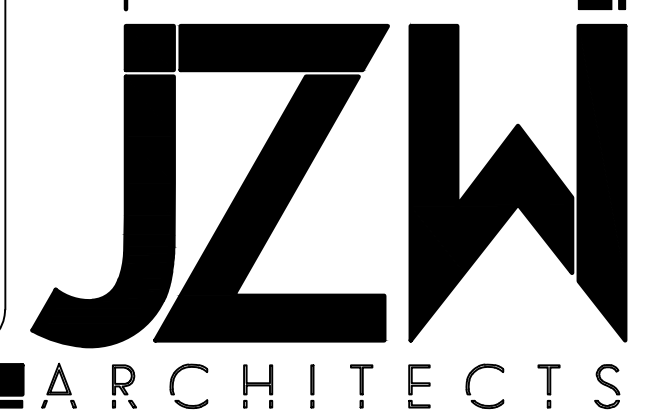
Conflicting information or errors found in the drawings, bidder should not assume the least expensive option will meet the project requirements.



MAVERIK, INC. STORE #250
5100 EAST & 2500 NORTH
EDEN, UTAH

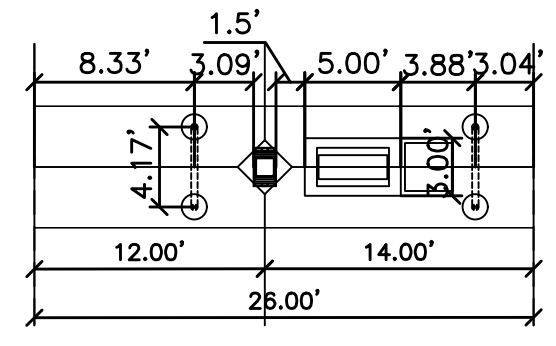
PROPOSED SITE PLAN

C6



- NOTES:
- WHERE PARKING SPACES THAT ARE RESERVED FOR PERSONS WITH DISABILITIES ARE DESIGNATED TO ACCOMMODATE WHEELCHAIR VANS, A "VAN ACCESSIBLE" (R7-8P) PLAQUE SHALL BE MOUNTED BELOW THE R7-8 SIGN.
 - SIGNS SHALL BE MOUNTED A MINIMUM OF 60" FROM BOTTOM OF SIGN TO TOP OF SIDEWALK.
 - SIGNS TO MEET ALL STATE AND LOCAL REGULATIONS.

ADA Parking Signage

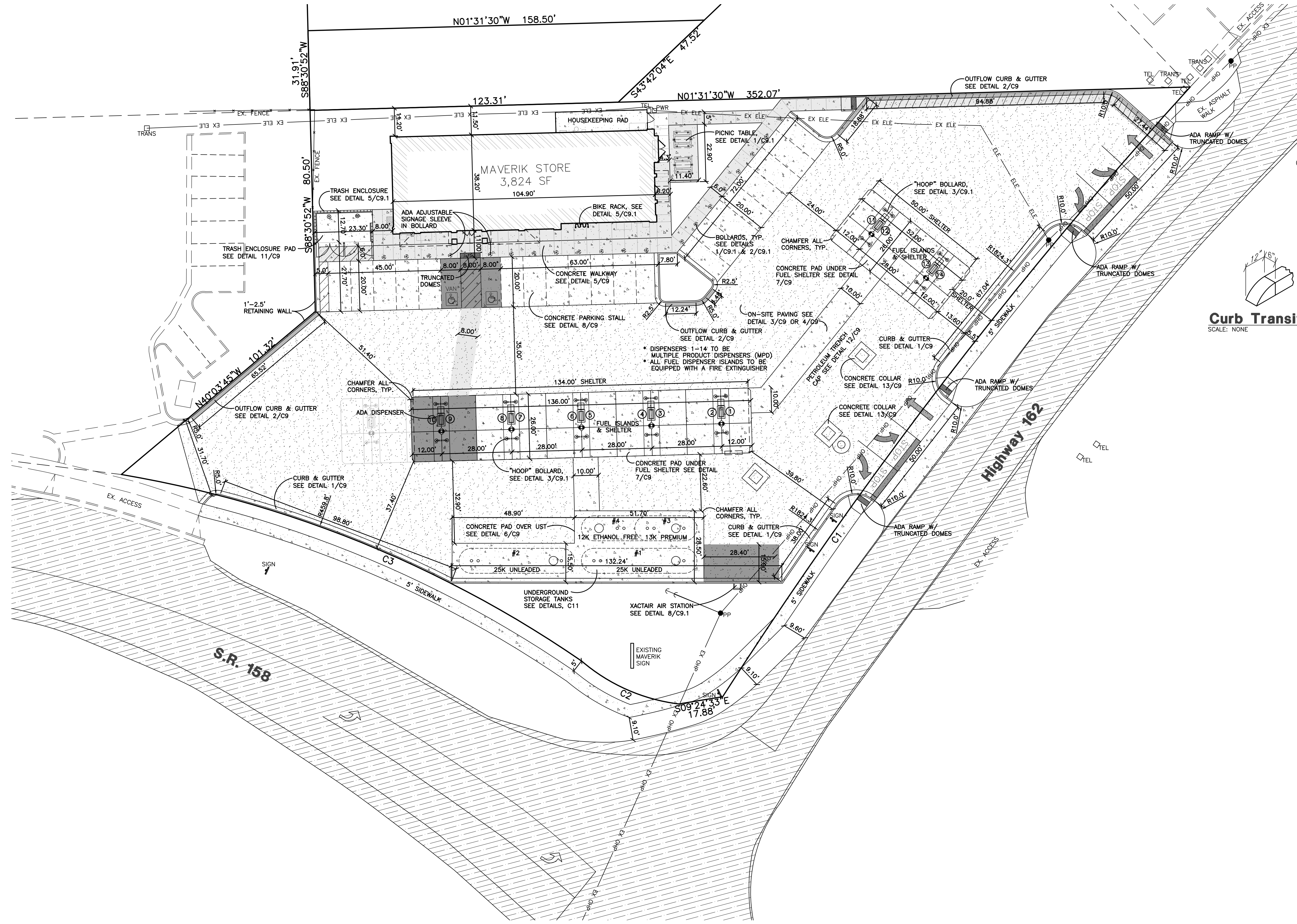


Fuel Island Layout
SCALE: 1" = 10'

Legend

- EXISTING ASPHALT PAVEMENT
- EXISTING CONCRETE PAVEMENT
- PROPOSED ASPHALT PAVEMENT
- PROPOSED CONCRETE
- PROPOSED CONCRETE PAVING OR ALTERNATE BID PAVING
- ADA ROUTE - NOT TO EXCEED A RUNNING SLOPE GREATER THAN 5.0% OR CROSS SLOPE GREATER THAN 15%
- ADA PARKING AREAS - NOT TO EXCEED A SLOPE GREATER THAN 15% IN ANY DIRECTION.
- OUTFLOW CURB (SEE GRADING PLAN)

- NOTES:
- SEE ELECTRICAL PLANS FOR ALL LIGHT POLES & LIGHT POLE LOCATIONS. ALL LIGHT POLE BASES SHALL BE STRAIGHT AND PLASTERED SMOOTH. TOP OF LIGHT BASE SHALL BE 2'-6" ABOVE TOP OF CURB/SIDEWALK. BASES PROVIDED BY G.C., TYP.
 - XACTAIR STATION ON 30"x36" CONCRETE PAD. EQUIPMENT PROVIDED BY OWNER. G.C. TO PROVIDE ELECTRICAL SERVICE AND INSTALL AIR STATION EQUIPMENT.
 - ALL UTILITY DIGGING OR OTHER EXCAVATION SHALL TAKE IN CONSIDERATION EXISTING SIDEWALKS, CURB & GUTTERS, AND OTHER STRUCTURES THAT MAY NEED TO BE REMOVED AND/OR REPLACED AS PART OF THE G.C. BID.



Curb Transition
SCALE: NONE

Elevation Datum
SITE BENCHMARK #1:
BRASS CAP MONUMENT
NORTHING = 22717.10
EASTING = 15343.94
ELEVATION = 4978.61'

Curve Table

#	RADIUS	ARC LENGTH	CHD LENGTH	TANGENT	CHD BEARING	DELTA
C1	1823.73'	307.73'	307.37'	154.23'	S52°32'05"E	9°40'05"
C2	73.40'	43.07'	42.46'	22.18'	S23°56'07"W	33°37'16"
C3	459.26'	200.12'	198.54'	101.68'	S22°04'22"W	24°58'00"

Elevation Datum
SITE BENCHMARK #2:
BRASS CAP MONUMENT
NORTHING = 22736.34
EASTING = 12676.29
ELEVATION = 4963.72'



RA Reeve & Associates, Inc.
5160 SOUTH 1500 WEST
RIVERDALE, UTAH 84405
TEL: (801) 621-3100
FAX: (801) 621-2666
www.reeve-assoc.com

LAND PLANNERS * CIVIL ENGINEERS
LAND SURVEYORS * TRAFFIC ENGINEERS
STRUCTURAL ENGINEERS * LANDSCAPE ARCHITECTS

PROJECT NUMBER: 5799-230
DRAWN BY: RWH
ENGINEER: JNR

