

No.	Date	Description

NOTE:
 Bid documents should not be separated or issued as partial sets to subcontractors. Bidders are responsible for all portions of the documents that pertain to work covered by sub-bids. Bidder assumes full responsibility for error or misinterpretations resulting from partial sets of Bidding Documents by itself or any sub-bidder.

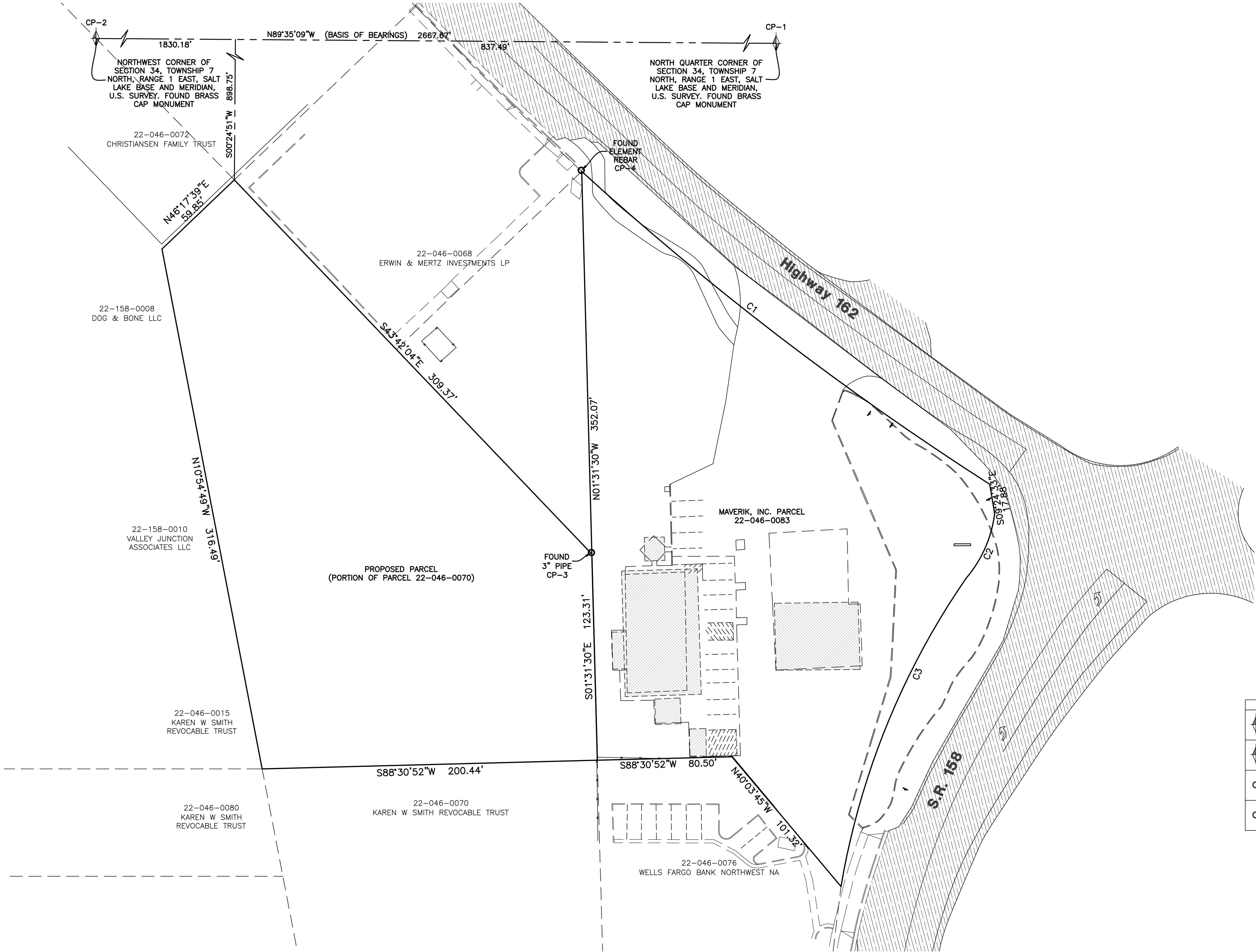
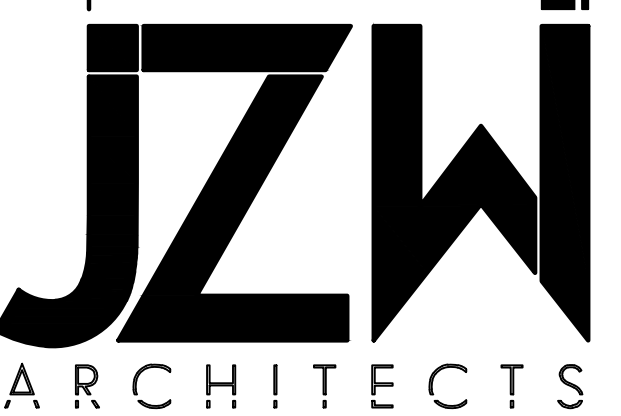
Conflicting information or errors found in the construction documents should be brought to the attention of the architect immediately. In the event of a conflict in the drawings, bidder should not assume the least expensive option will meet the project requirements.



MAVERIK, INC. STORE #250
 5100 EAST & 2500 NORTH
 EDEN, UTAH

SHEET TITLE
PARCEL MAP

C3



Site Control

POINT	DESCRIPTION	NORTHING	EASTING	ELEVATION
CP-1	BRASS CAP	22717.10	15343.94	4978.61'
CP-2	BRASS CAP	22736.34	12676.29	4963.72'
CP-3	REBAR	21601.56	14713.43	4969.99'
CP-4	3" PIPE	21830.10	14707.32	4970.01'

Curve Table

#	RADIUS	ARC LENGTH	CHD LENGTH	TANGENT	CHD BEARING	DELTA
C1	1823.73'	307.73'	307.37'	154.23'	S52°32'05"E	9°40'05"
C2	73.40'	43.07'	42.46'	22.18'	S23°56'07"W	33°37'16"
C3	459.26'	200.12'	198.54'	101.68'	S22°04'22"W	24°58'00"

