

No.	Date	Description

NOTE:
Bid documents should not be separated or issued as partial sets to subcontractors. Bidders are responsible for all portions of the documents that pertain to work covered by sub-bids. Bidder assumes full responsibility for error or misinterpretations resulting from partial sets of Bidding Documents by itself or any sub-bidder.

Conflicting information or errors found in the construction documents should be brought to the attention of the architect immediately. In the event of a conflict in the drawings, bidder should not assume the least expensive option will meet the project requirements.



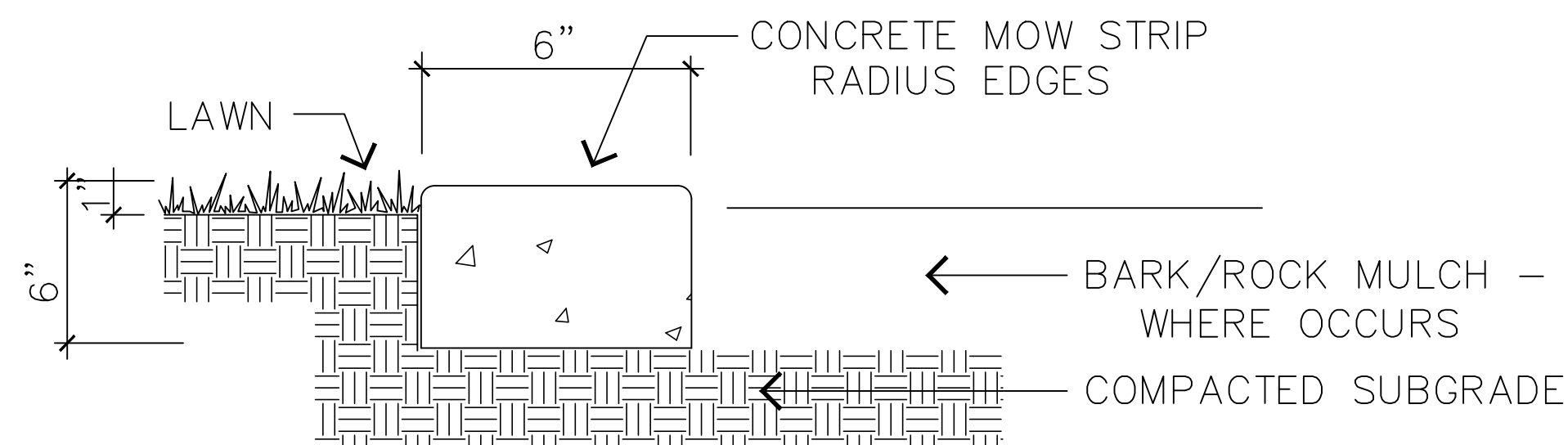
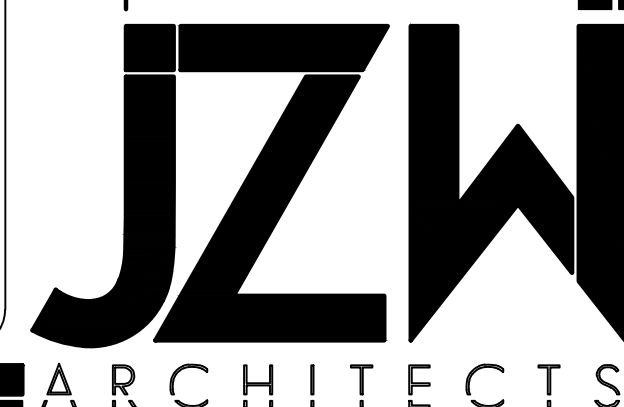
MAVERIK, INC. STORE #250

5100 EAST & 2500 NORTH
EDEN, UTAH

LANDSCAPE
DETAILS

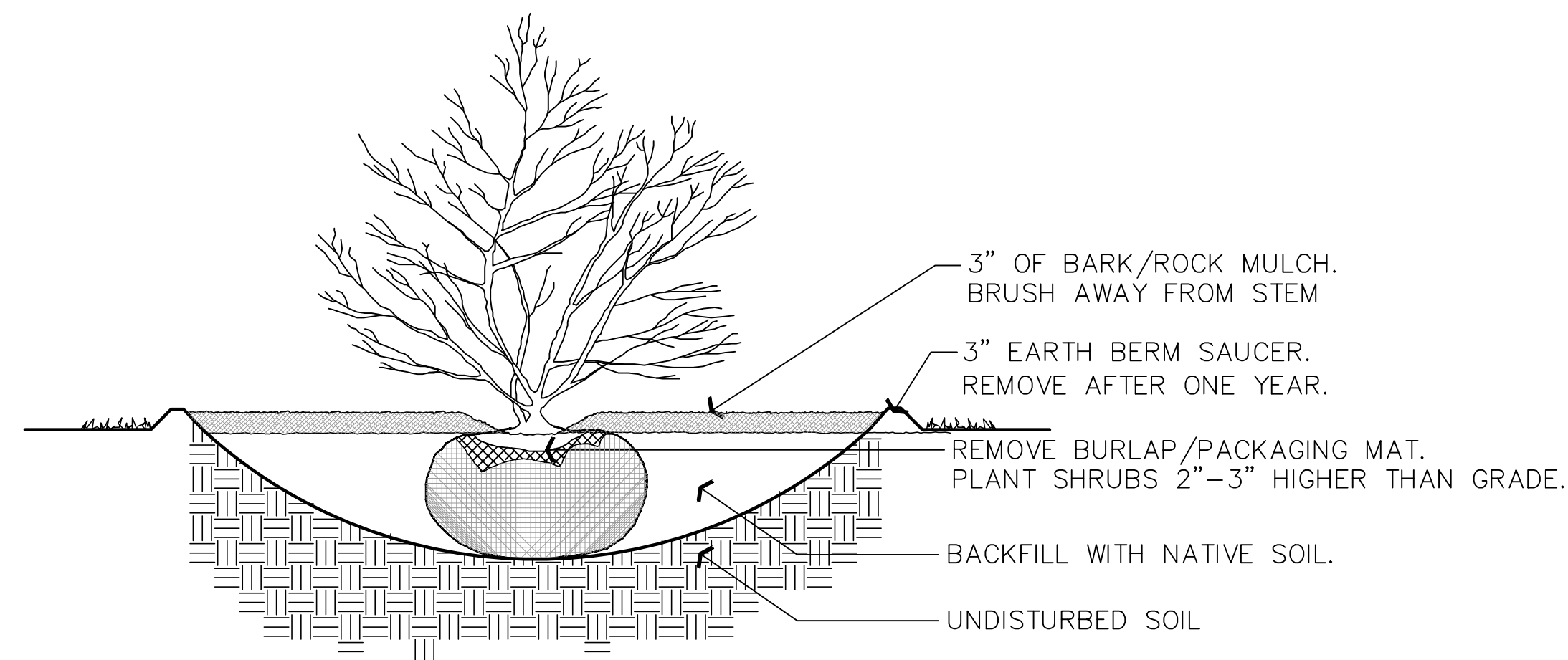
SHEET TITLE

L2



CONCRETE MOW STRIP

SCALE: NOT TO SCALE



NOTE: DIG HOLE THREE TIMES THE WIDTH AND AS DEEP AS ROOTBALL, EXCEPT WHERE NOTED.

SHRUB PLANTING

SCALE: NOT TO SCALE

General Notes

A) The contractor shall verify the exact location of all existing and proposed utilities, and all site conditions prior to beginning construction. The contractor shall coordinate his work with the project manager and all other contractors working on this site.

B) The finish grade of all planting area shall be smooth, even and consistent, free of any humps, depressions or other grading irregularities. The finish grade of all landscape areas shall be graded consistently 3/4" below the top of all surrounding walks, curbs, etc.

C) The contractor shall stake the location of all plants for approval prior to planting. Trees shall be located equidistant from all surrounding plant material. Shrubs and ground covers shall be triangular and equally spaced.

D) The plant materials list is provided as an indication of the specific requirements of the plants specified, wherever in conflict with the planting plan, the planting plan shall govern.

E) The contractor shall provide all materials, labor and equipment required for the proper completion of all landscape work as specified and shown on the drawings.

F) All plant materials shall be approved prior to planting. The Owner/Landscape Architect has the right to reject any and all plant material not conforming to the specifications. The Owner/Landscape Architect decision will be final.

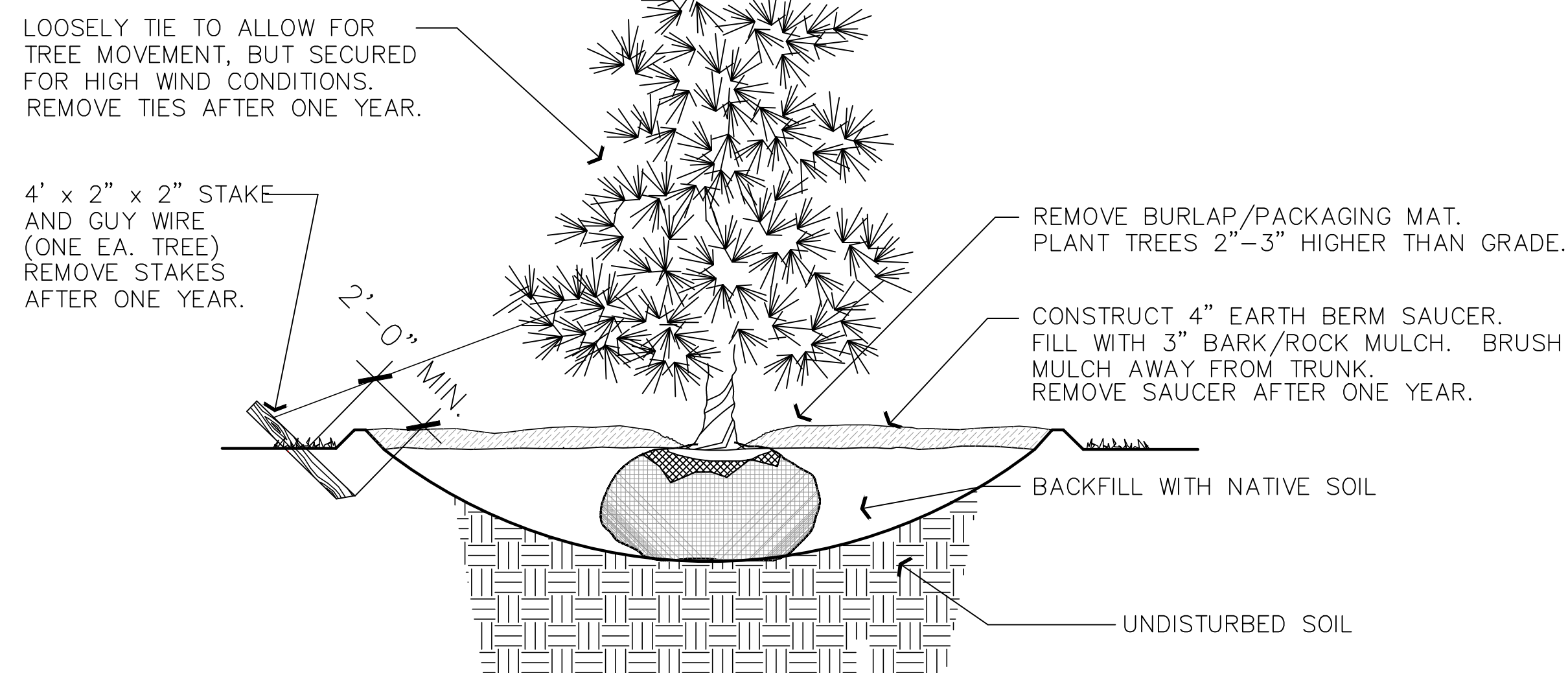
G) The contractor shall keep the premises, storage areas and paving areas neat and orderly at all times. Remove trash, sweep, clean, hose, etc. daily.

H) The contractor shall plant all plants per the planting details, stake/guy as shown. Top of root balls shall be planted flush with grade.

I) The contractor shall not impede drainage in any way. The contractor shall always maintain positive drainage away from the building, walls, etc.

J) The contractor shall maintain all work until ALL work is complete and accepted by the Owner. In addition, the contractor shall maintain and guarantee all work for a period of THIRTY DAYS from the date of final acceptance by the Owner. Maintenance shall include mowing, weeding, fertilizing, cleaning, insecticides, herbicides, etc.

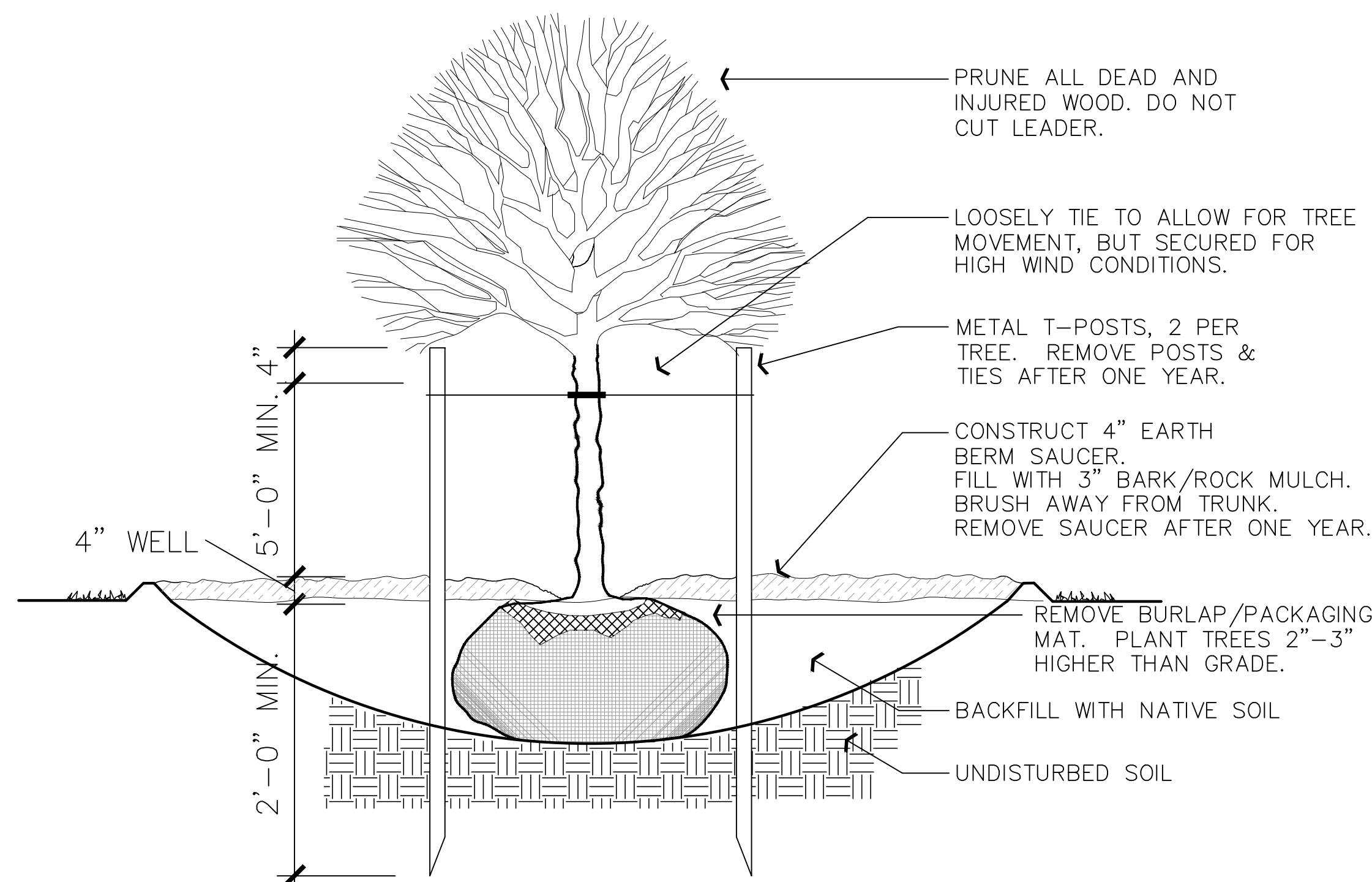
K) Maverik Corporation shall be responsible for landscape maintenance beyond construction period.



NOTE: DIG HOLE THREE TIMES THE WIDTH AND AS DEEP AS ROOTBALL, EXCEPT WHERE NOTED.

CONIFEROUS TREE PLANTING

SCALE: NOT TO SCALE



NOTE: DIG HOLE THREE TIMES THE WIDTH AND AS DEEP AS ROOTBALL, EXCEPT WHERE NOTED.

DECIDUOUS TREE PLANTING

SCALE: NOT TO SCALE



5160 SOUTH 1500 WEST
RIVERDALE, UTAH 84405
TEL: (801) 621-3100
FAX: (801) 621-2666
www.reeve-assoc.com

LAND PLANNERS * CIVIL ENGINEERS
LAND SURVEYORS * TRAFFIC ENGINEERS
STRUCTURAL ENGINEERS * LANDSCAPE ARCHITECTS

PROJECT NUMBER: 5799-230
DRAWN BY: RWH
ENGINEER: JNR