

BASIS OF BEARINGS
 N 89°55'51" W 1381.07'
 (N 89°56'05" W 1380.98' RECORD)

FOUND WEBER COUNTY LINE MONUMENT PER WEBER COUNTY SURVEYOR, 4" BRASS CAP 2013, GOOD CONDITION
 FLUSH IN CONCRETE
 DETAIL "A"

NORTHEAST CORNER SECTION 1, TOWNSHIP 7 NORTH, RANGE 1 EAST SALT LAKE BASE AND MERIDIAN FOUND GLO 1944, 4" BRASS CAP, GOOD CONDITION
 6" ABOVE GROUND
 DETAIL "B"

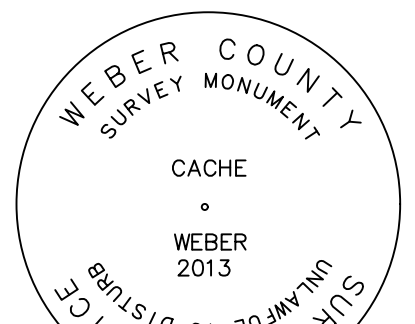
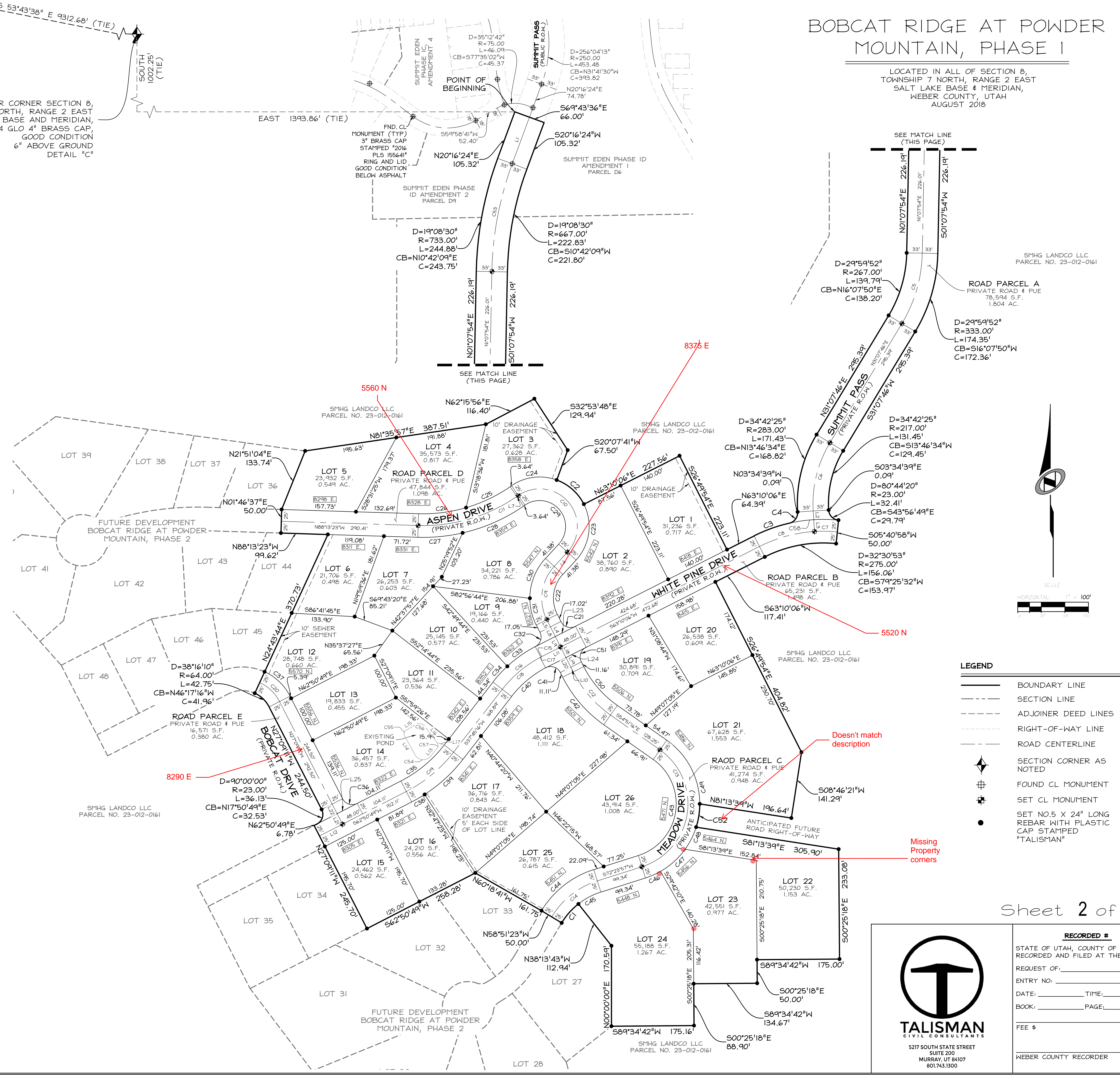
NORTH QUARTER CORNER SECTION 8, TOWNSHIP 7 NORTH, RANGE 2 EAST SALT LAKE BASE AND MERIDIAN, FOUND 1944 GLO 4" BRASS CAP, GOOD CONDITION
 6" ABOVE GROUND
 DETAIL "C"

BOBCAT RIDGE AT POWDER MOUNTAIN, PHASE 1

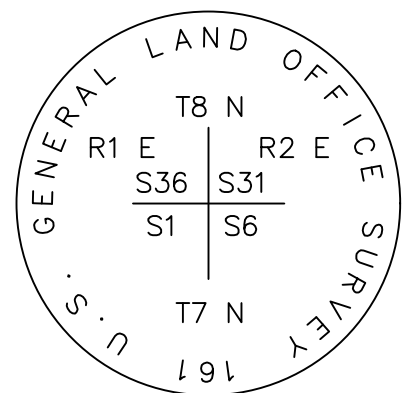
LOCATED IN ALL OF SECTION 8, TOWNSHIP 7 NORTH, RANGE 2 EAST SALT LAKE BASE & MERIDIAN, WEBER COUNTY, UTAH
 AUGUST 2018

LINE	LENGTH	BEARING
L1	105.32	S20°16'24"W
L2	18.56	S3°34'39"E
L3	25.00	S3°34'39"E
L4	23.01	S26°49'54"E
L5	17.05	N26°49'54"W
L6	41.38	S42°40'08"W
L7	3.64	S55°25'35"W
L8	22.98	S26°49'54"E
L9	24.99	S26°49'54"E
L10	11.16	S26°49'54"E
L11	43.63	S63°10'06"W
L12	54.78	S62°50'49"W
L13	21.31	S39°39'56"W
L14	44.87	N29°19'51"W
L15	22.52	N58°06'55"E
L16	43.63	S36°58'44"E
L17	15.83	N71°54'28"W
L18	25.03	S26°49'54"E
L19	22.97	S26°49'54"E
L20	23.02	S26°49'54"E
L21	25.00	N27°09'11"W
L22	23.00	N27°09'11"W
L23	95.66	N63°09'02"E
L24	95.50	N63°08'13"E
L25	96.00	N62°50'49"E

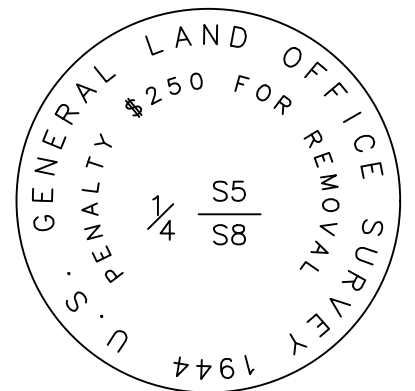
CURVE	RADIUS	LENGTH	DELTA	BEARING	CHORD
C1	150.00	54.00	20°37'40"	S41°27'27"W	53.71
C2	105.00	78.88	43°02'25"	S48°21'07"E	77.03
C3	325.00	79.38	13°59'39"	N70°09'55"E	79.18
C4	23.00	32.41	80°44'23"	N36°47'33"E	29.80
C5	300.00	157.07	29°59'52"	N16°07'50"E	155.28
C6	250.00	151.44	34°42'25"	S13°46'34"W	149.13
C7	300.00	48.49	9°15'37"	N88°56'50"W	48.43
C8	300.00	121.76	23°15'16"	S74°47'43"W	120.93
C9	100.00	121.30	69°30'02"	S07°55'07"W	114.00
C10	80.00	233.51	167°14'33"	N40°57'09"W	159.01
C11	350.00	222.05	36°21'02"	S73°36'06"W	218.35
C12	250.00	122.27	28°01'21"	S40°50'35"E	121.06
C13	140.00	310.94	127°15'13"	N08°46'21"E	250.86
C14	175.00	126.01	41°15'20"	S51°46'17"W	123.30
C15	250.00	3.67	0°50'25"	N62°44'53"E	3.67
C16	250.00	107.22	24°34'25"	N50°02'28"E	106.40
C17	250.00	5.41	114°23"	N62°32'54"E	5.41
C18	250.00	105.48	24°10'27"	N49°50'29"E	104.70
C19	300.00	131.38	25°05'33"	N50°18'02"E	130.34
C20	89.00	59.38	38°13'37"	N46°15'59"W	58.28
C21	23.00	36.13	90°00'00"	S71°49'54"E	32.53
C22	75.00	90.98	69°30'02"	S07°55'07"W	85.50
C23	105.00	127.37	69°30'02"	N07°55'07"E	119.70
C24	105.00	100.25	54°42'06"	S82°46'38"W	96.48
C25	325.00	103.97	18°19'44"	N64°35'27"E	103.53
C26	325.00	102.22	18°01'18"	N82°45'58"E	101.80
C27	375.00	95.93	14°39'25"	N84°26'55"E	95.67
C28	375.00	141.99	21°41'38"	N66°16'24"E	141.14
C29	55.00	160.54	167°14'33"	N40°57'09"W	109.32
C30	125.00	92.95	42°36'18"	S21°21'58"W	90.82
C31	125.00	58.68	26°53'44"	S13°23'03"E	58.14
C32	23.00	35.79	89°09'35"	N17°44'53"E	32.29
C33	275.00	72.75	15°09'25"	S54°44'58"W	72.54
C34	275.00	45.20	9°25'00"	S42°27'46"W	45.15
C35	275.00	120.44	25°05'33"	N50°18'02"E	119.48
C36	23.00	36.13	90°00'00"	S72°09'11"E	32.53
C37	114.00	76.01	38°12'11"	N46°15'16"W	74.61
C38	325.00	31.97	5°38'12"	N60°01'43"E	31.96
C39	325.00	110.36	19°27'21"	N47°28'56"E	109.83
C40	225.00	94.93	24°10'27"	S49°50'29"W	94.23
C41	23.00	35.66	88°49'22"	N71°14'36"W	32.19
C42	275.00	134.50	28°01'21"	S40°50'35"E	133.16
C43	115.00	255.41	127°15'13"	N08°46'21"E	206.06
C44	200.00	144.01	41°15'20"	S51°46'17"W	140.92
C45	150.00	54.00	20°37'40"	S62°05'07"W	53.71
C46	165.00	34.85	12°06'07"	N66°20'54"E	34.79
C47	165.00	70.52	24°29'21"	N48°03'10"E	69.99
C48	165.00	52.76	18°19'15"	N26°38'52"E	52.54
C49	165.00	158.14	54°54'43"	N27°23'54"W	152.15
C50	225.00	110.04	28°01'21"	S40°50'35"E	108.95
C51	23.00	36.10	89°56'15"	S18°08'13"W	32.51
C52	165.00	50.19	17°25'46"	S08°46'21"W	50.00
C53	700.00	233.86	19°08'30"	N10°42'09"E	232.77
C54	20.00	38.75	111°00'13"	N84°49'58"W	32.97
C55	10.00	15.26	87°26'46"	N14°23'32"E	13.82
C56	15.00	22.23	84°54'21"	S79°25'54"E	20.25
C57	10.00	13.38	76°38'40"	S01°20'36"W	12.40
C58	325.00	105.05	18°31'14"	N86°25'21"E	104.60



DETAIL "A"



DETAIL "B"



DETAIL "C"

SMHG PHASE I, LLC.
 3632 N. WOLF CREEK DR.
 EDEN, UT, 84310

- LEGEND**
- BOUNDARY LINE
 - SECTION LINE
 - ADJOINER DEED LINES
 - RIGHT-OF-WAY LINE
 - ROAD CENTERLINE
 - SECTION CORNER AS NOTED
 - FOUND CL MONUMENT
 - SET CL MONUMENT
 - SET NO.5 X 24" LONG REBAR WITH PLASTIC CAP STAMPED "TALISMAN"

TALISMAN CIVIL CONSULTANTS
 5217 SOUTH STATE STREET
 SUITE 200
 MURRAY, UT 84107
 801.743.1300

RECORDED #
 STATE OF UTAH, COUNTY OF WEBER,
 REGISTERED AND FILED AT THE
 REQUEST OF:
 ENTRY NO. _____
 DATE: _____ TIME: _____
 BOOK: _____ PAGE: _____
 FEE \$ _____
 WEBER COUNTY RECORDER