

BOBCAT RIDGE AT POWDER MOUNTAIN, PHASE 2

LOCATED IN ALL OF SECTION 8,
TOWNSHIP 7 NORTH, RANGE 2 EAST
SALT LAKE BASE & MERIDIAN,
WEBER COUNTY, UTAH
JUNE 2019

BASIS OF BEARINGS
N 89°55'51" W 1381.07'
(N 89°56'05" W 1380.98' RECORD)

FOUND WEBER COUNTY LINE
MONUMENT PER WEBER COUNTY
SURVEYOR, 4" BRASS CAP 2013,
GOOD CONDITION
FLUSH IN CONCRETE
DETAIL "A"

NORTHEAST CORNER SECTION 8,
TOWNSHIP 7 NORTH, RANGE 1 EAST
SALT LAKE BASE AND MERIDIAN
FOUND GLO 1944, 4" BRASS CAP,
GOOD CONDITION
6" ABOVE GROUND
DETAIL "B"

NORTH QUARTER CORNER SECTION 8,
TOWNSHIP 7 NORTH, RANGE 2 EAST
SALT LAKE BASE AND MERIDIAN,
FOUND 1944 GLO 4" BRASS CAP,
GOOD CONDITION
6" ABOVE GROUND
DETAIL "C"

CURVE TABLE					
CURVE	RADIUS	LENGTH	DELTA	BEARING	CHORD
C1	600.00	181.10	171°7'39"	S83°07'47"W	180.42
C2	89.00	80.42	51°46'23"	S88°44'01"W	77.71
C3	175.00	84.10	27°32'03"	N44°54'39"E	83.29
C4	200.00	71.85	20°34'59"	N41°26'07"E	71.46
C5	200.00	24.26	6°57'04"	N55°12'08"E	24.25
C6	23.00	20.77	51°43'51"	S32°48'44"W	20.07
C7	54.50	64.56	67°52'19"	N40°52'58"E	60.85
C8	54.50	32.55	34°13'20"	S88°04'12"E	32.07
C9	54.50	46.36	48°44'16"	S46°35'24"E	44.97
C10	54.50	45.08	47°23'21"	S01°28'25"W	43.80
C11	54.50	81.08	85°14'27"	S67°47'18"W	73.81
C12	23.00	20.77	51°43'52"	N84°32'36"E	20.07
C13	150.00	12.81	4°53'28"	N56°13'56"E	12.80
C14	150.00	59.28	22°38'34"	N42°27'55"E	58.89
C15	625.00	71.61	6°33'52"	S88°29'41"W	71.57
C16	625.00	117.04	10°43'48"	S79°50'52"W	116.87
C17	23.00	20.77	51°43'51"	S79°39'06"E	20.07
C18	54.50	5.12	5°22'41"	N56°28'31"W	5.11
C19	54.50	68.43	71°56'21"	S84°51'57"W	64.02
C20	54.50	54.80	57°36'36"	S20°05'29"W	52.52
C21	54.50	65.02	68°21'23"	S42°53'31"E	61.23
C22	54.50	76.27	80°10'41"	N62°50'27"E	70.19
C23	23.00	20.77	51°43'48"	S48°37'00"W	20.07
C24	575.00	120.90	12°02'51"	S80°30'23"W	120.68
C25	575.00	52.65	5°14'48"	S89°09'13"W	52.64
C26	114.00	91.61	46°02'34"	N88°22'39"W	89.16
C27	114.00	11.45	5°45'15"	S65°43'27"W	11.44
C28	54.50	15.20	15°58'32"	S56°53'03"W	15.15
C29	54.50	15.20	15°58'32"	S40°54'31"W	15.15

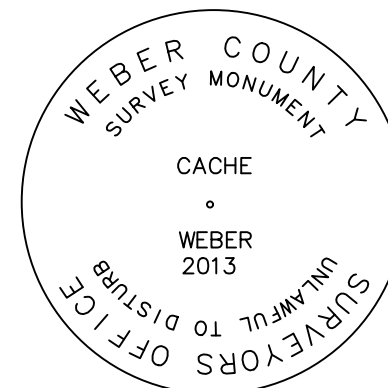
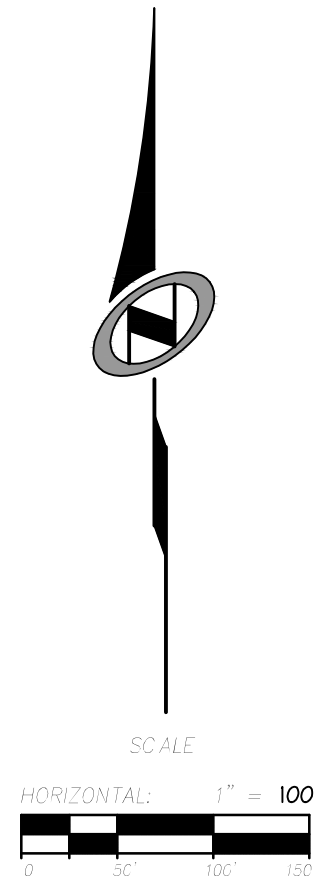
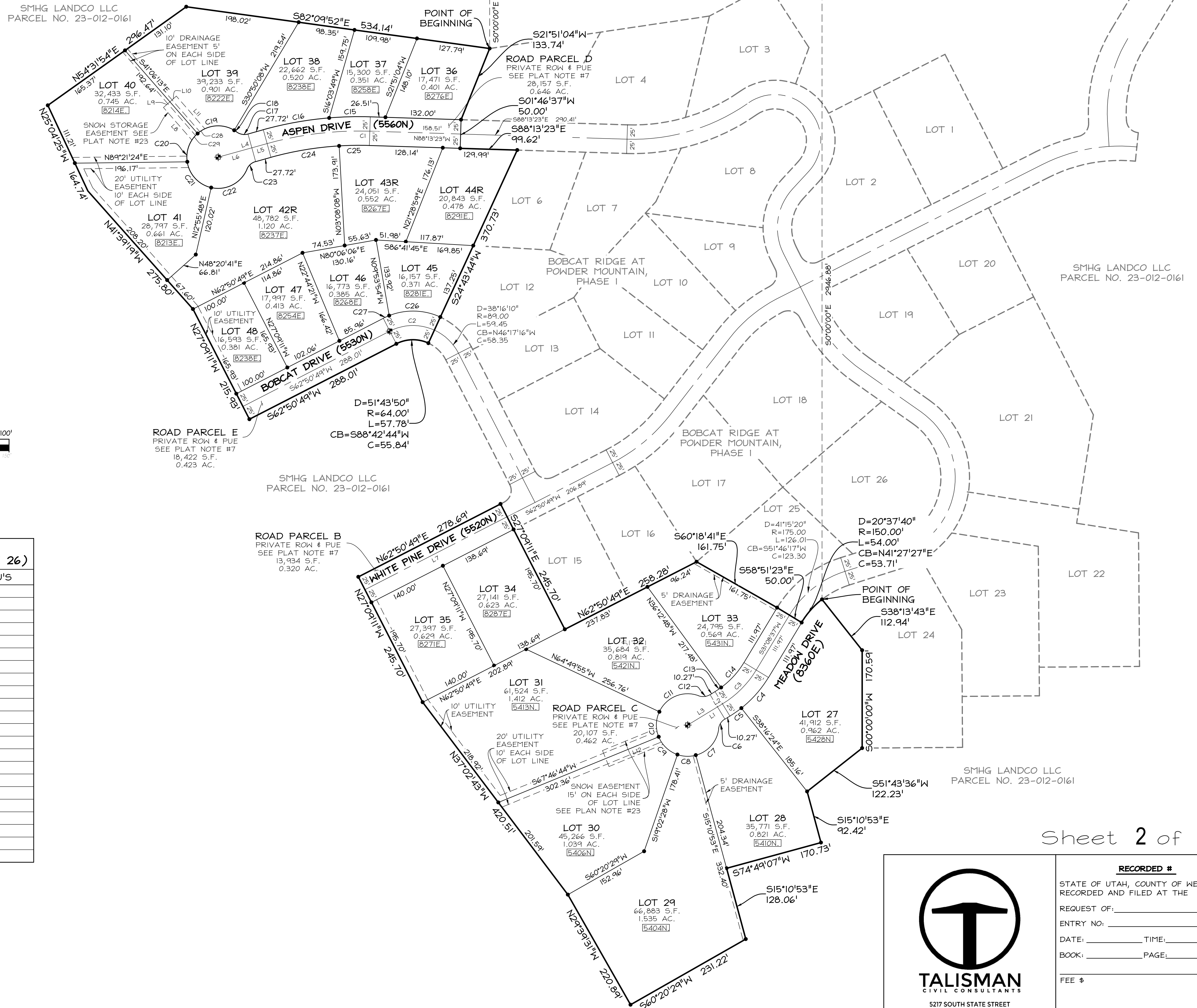
TABLE A (SEE PLAT NOTE 26)	
LOT NO.	ERU'S
27	1
28	1
29	1
30	1
31	1
32	1
33	1
34	1
35	1
36	1
37	1
38	1
39	1
40	1
41	1
42	1
43	1
44	1
45	1
46	1
47	1
48	1

LINE TABLE		
LINE	LENGTH	BEARING
L1	71.12	S58°40'40"W
L2	10.27	S58°40'40"W
L3	60.85	S58°40'40"W
L4	88.57	N74°28'58"E
L5	27.72	S74°28'58"W
L6	60.85	S74°28'58"W
L7	278.69	S62°50'49"W
L8	75.73	N41°06'13"W
L9	15.00	N48°53'47"E
L10	15.00	N48°53'47"E
L11	75.73	N41°06'13"W
L12	100.00	N67°46'44"E

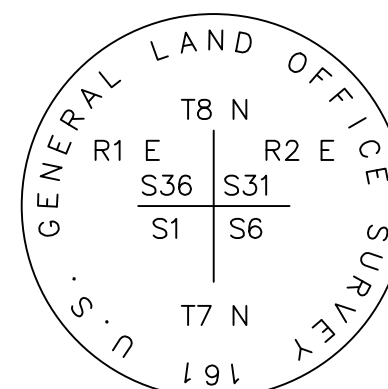
- LEGEND**
- BOUNDARY LINE
 - - - SECTION LINE
 - - - ADJOINER DEED LINES
 - - - RIGHT-OF-WAY LINE
 - - - ROAD CENTERLINE
 - ◆ SECTION CORNER AS NOTED
 - ⊕ SET CL MONUMENT
 - SET NO.5 X 24" LONG REBAR WITH PLASTIC CAP STAMPED "TALISMAN"

SMHG PHASE II INVESTOR, LLC.
3923 N. WOLF CREEK DR.
EDEN, UT, 84310

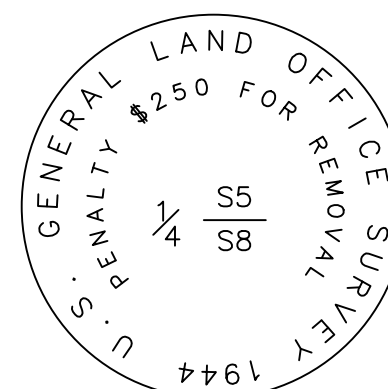
SMHG LANDCO LLC
PARCEL NO. 23-012-0161



DETAIL "A"



DETAIL "B"



DETAIL "C"

Sheet 2 of 2



TALISMAN
CIVIL CONSULTANTS
5217 SOUTH STATE STREET
SUITE 200
MURRAY, UT 84107
801.743.1300

RECORDED #
STATE OF UTAH, COUNTY OF WEBER,
RECORDED AND FILED AT THE
REQUEST OF:
ENTRY NO. _____
DATE: _____ TIME: _____
BOOK: _____ PAGE: _____
FEE \$ _____
WEBER COUNTY RECORDER