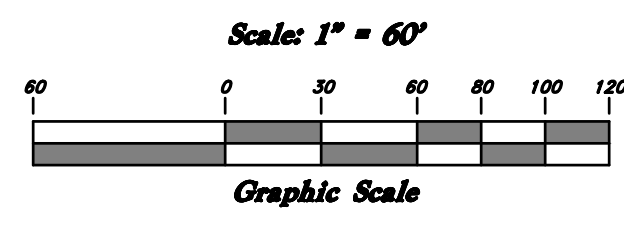
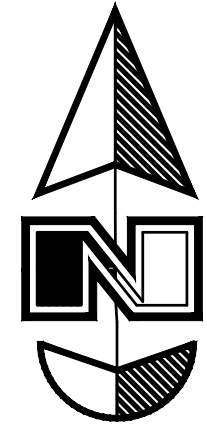
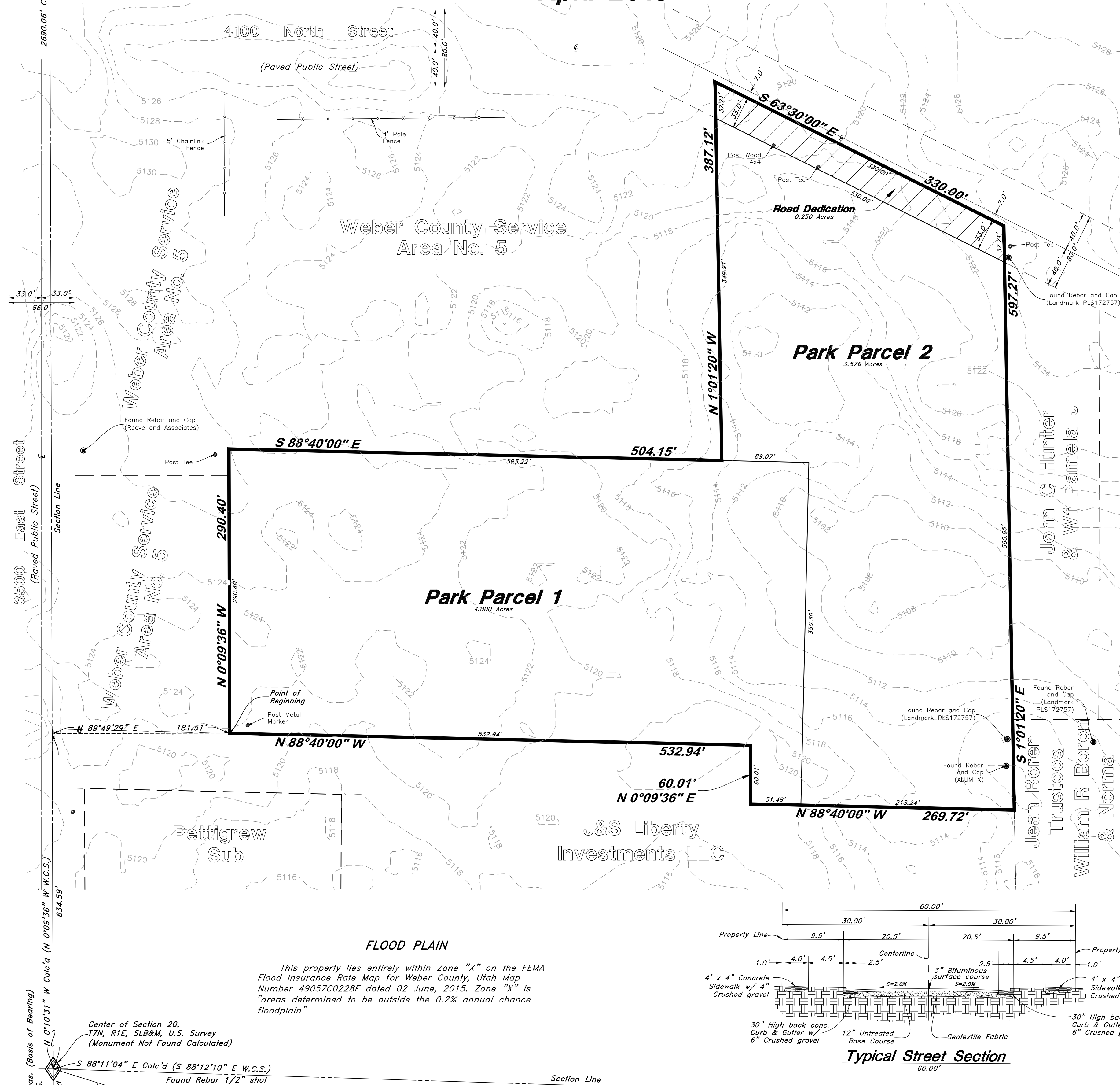
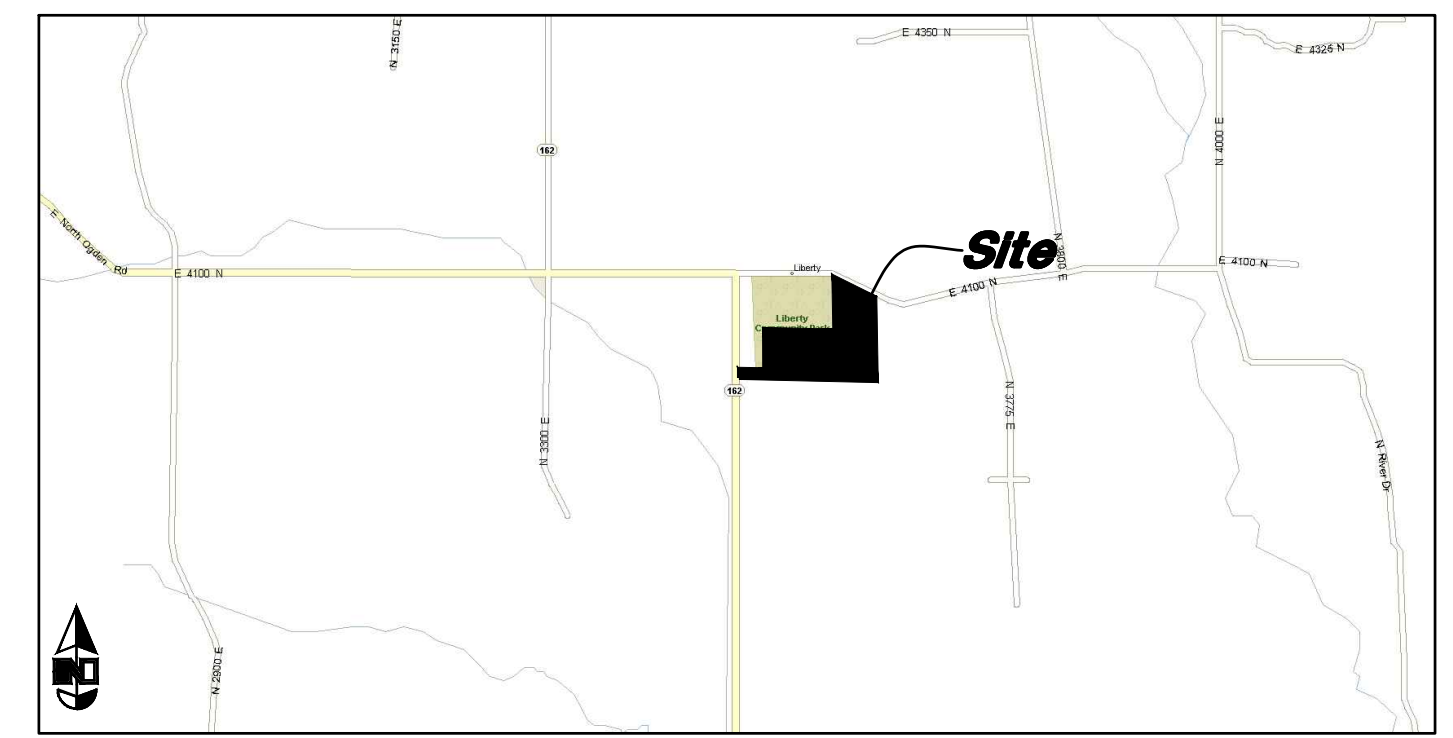


North Quarter Corner of Section 20,
T7N, R1E, SLB&M, U.S. Survey
(Found Weber County Brass Cap
Monument dated 1970 or 1976)



Liberty Acres

A part of the Northeast 1/4 of Section 20, T7N, R1E, SLB&M, U.S. Survey
Weber County, Utah
April 2018



Legend

(Note: All items may not appear on drawing)

San. Sewer Manhole	Ductile Iron	DI
Water Manhole	Polyvinyl Chloride	PVC
Storm Drain Manhole	Top of Asphalt	TA
Cleanout	Edge of Asphalt	EA
Electrical Manhole	Centerline	CL
Catch Basins	Flowline	FL
Exst. Fire Hydrant	Finish Floor	FF
Fire Hydrant	Top of Curb	TC
Exst. Water Valve	Top of Wall	TW
Water Valve	Top of Concrete	TCN
Sanitary Sewer	Natural Ground	NG
Culinary Water	Finish Grade	FG
Gas Line	Match Existing	ME
Irrigation Line	Fire Department Connection	FDC
Storm Drain	Finish Contour	90
Telephone Line	Exst. Contour	90
Secondary Waterline	Finish Grade	95.35TA
Power Line	Exst. Grade	95.72TA
Fire Line	Ridge Line	R
Land Drain	Direction of Flow	
Power pole w/guy	Existing Asphalt	
Light Pole	New Asphalt	
Fence	Existing Concrete	
Flowline of ditch	New Concrete	
Overhead Power line	To be Dedicated for Public Right-of-Way	
Corrugated Metal Pipe		
Concrete Pipe		
Reinforced Concrete Pipe		

NARRATIVE

This Survey and subdivision plat were requested by Mr. Steve Waldrip for the purpose of creating two parcels and dedicating a portion of roadway.

Weber County Brass Cap Monuments were found at the North Quarter Corner, South Quarter Corner and East Quarter Corner, in Ogden City, Weber County Utah.

A Line between Monuments found at the North Quarter Corner and the South Quarter Corner of Section 20 with a Bearing of North 0°09'22" West was used as the Basis of Bearings for this Survey.

The boundaries of this parcel were retraced using a survey prepared by Landmark Surveying by Dick Dixon dated 9-10-97, (Filed with the Weber County Surveyor's Office on April 11 2000, as Filing #2472)

Property Corners and other Survey Markers were set as depicted on this survey.

BOUNDARY DESCRIPTIONS

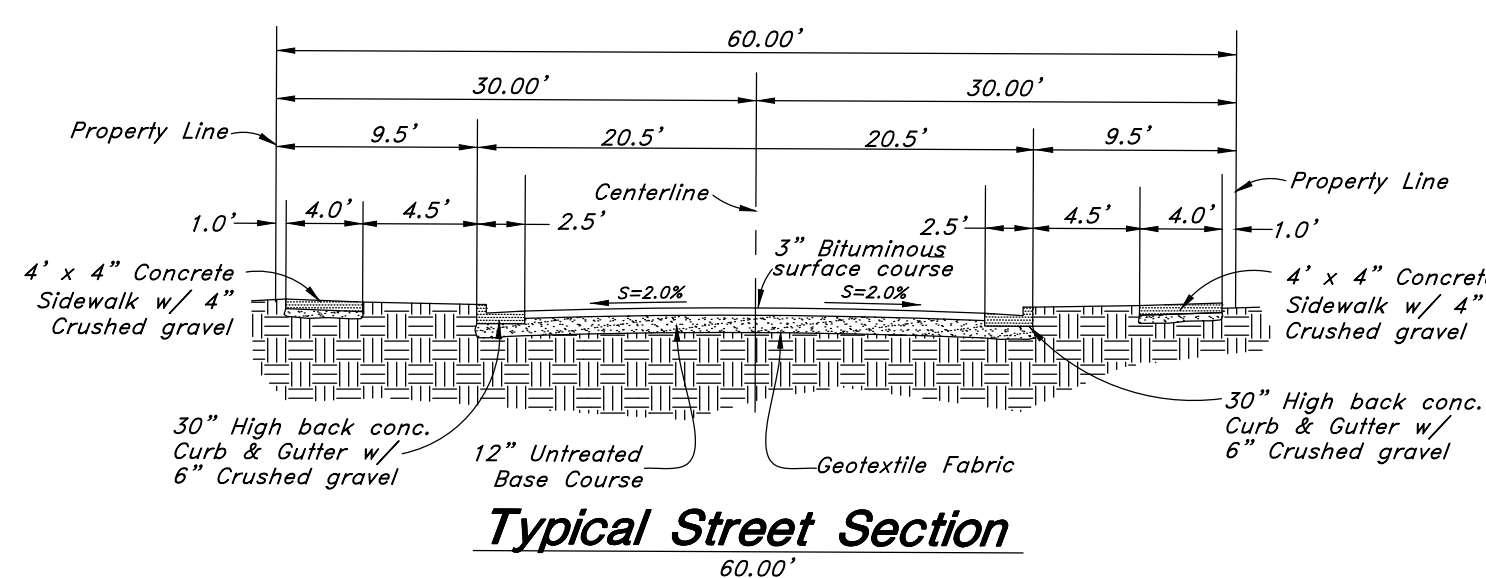
A part of the Northeast Quarter of Section 20, Township 7 North, Range 1 East, Salt Lake Base and Meridian, U.S. Survey, Liberty, Weber County Utah:

Beginning at a point 634.59 feet North 0°10'31" West along the section line and 181.51 feet North 89°49'29" East from the Center of Section 20, Township 7 North, Range 1 East, Salt Lake Base and Meridian, U.S. Survey; and running thence North 0°09'36" West 290.40 feet; thence South 88°40'00" East 504.15 feet; thence North 1°01'20" West 387.12 feet into the Centerline of 4100 North Street; thence South 63°30'00" East 330.00 feet along said Centerline; thence South 1°01'20" East 597.27 feet along an Existing fence line; thence North 88°40'00" West 269.72 feet; thence North 0°09'36" East 60.01 feet; thence North 88°40'00" West 532.94 feet to the Point of Beginning.

Containing: 7.826 Acres

FLOOD PLAIN

This property lies entirely within Zone "X" on the FEMA Flood Insurance Rate Map for Weber County, Utah Map Number 49057C0228F dated 02 June, 2015. Zone "X" is "areas determined to be outside the 0.2% annual chance floodplain"



Center of Section 20,
T7N, R1E, SLB&M, U.S. Survey
(Monument Not Found Calculated)

S 88°11'04" E Calc'd (S 88°12'10" E W.C.S.)
Found Rebar 1/2" shot
base bent North, used as
Witness Corner

S 72°37'50" E Meas.
14.85' Meas.

South Quarter Corner of Section 20,
T7N, R1E, SLB&M, U.S. Survey
(Found Weber County Brass Cap
Monument dated 1961)

East Quarter Corner of
Section 20, T7N, R1E,
SLB&M, U.S. Survey
(Found Weber County
Brass Cap 1975)

ENGINEER:
Great Basin Engineering, Inc
c/o Andy Hubbard
AndyH@greatbasineng.com
5746 South 1475 East Suite 200
Ogden, Utah 84405
(801) 394-4515

DEVELOPER:
Steve Waldrip
1911 North 5700 East
Eden, UT 84310
(801) 389-9329

PRELIMINARY

GREAT BASIN ENGINEERING
 5746 SOUTH 1475 EAST OGDEN, UTAH 84403
 MAIN (801) 394-4515 S.L.C (801) 521-0222 FAX (801) 392-7544
 WWW.GREATBASINENGINEERING.COM

Preliminary Plan
Liberty Acres
 Approx. 3500 East & 3992 North
 Weber County, Utah
 A part of Section 20, T7N, R1E, SLB&M, U.S. Survey

27 Apr, 2018

SHEET NO.
1