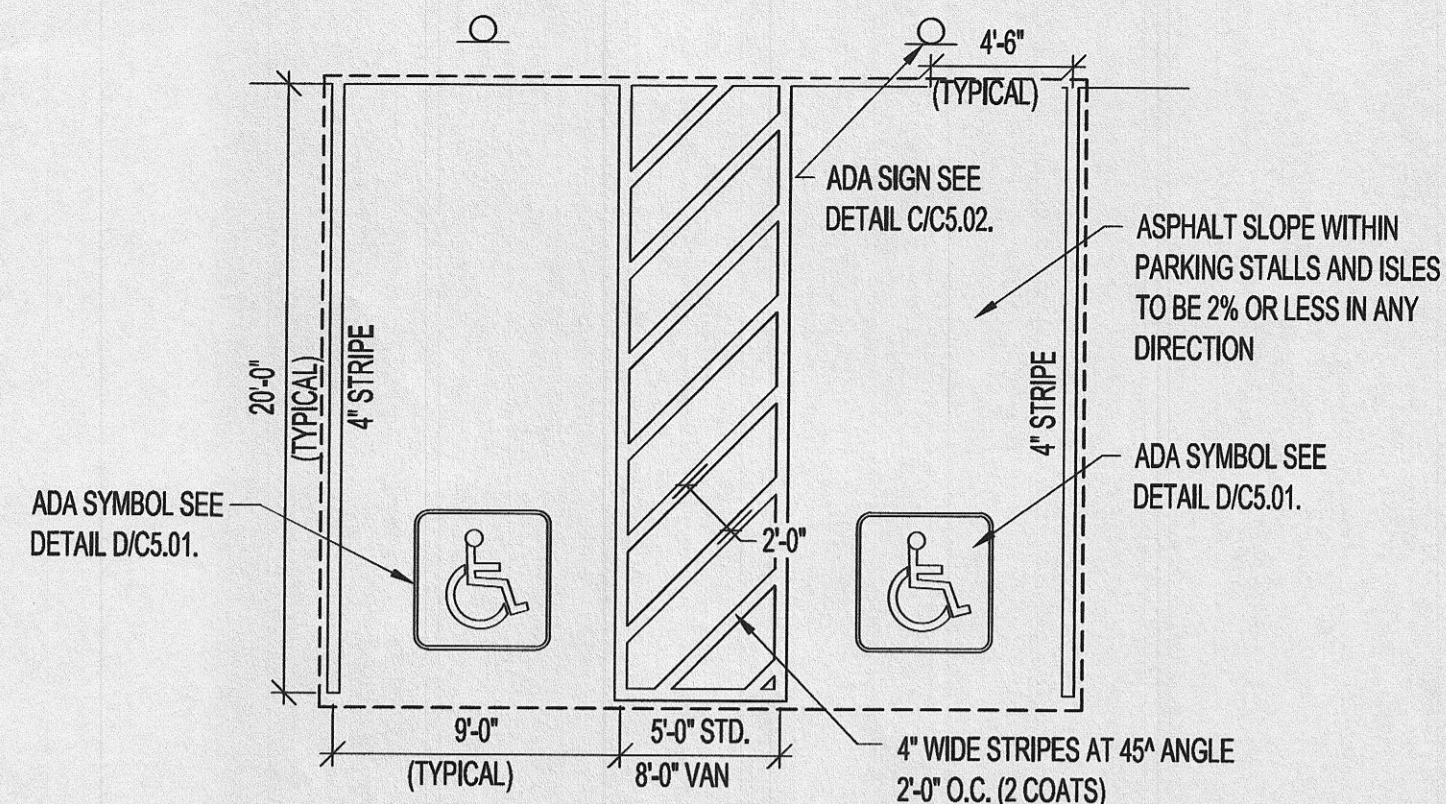


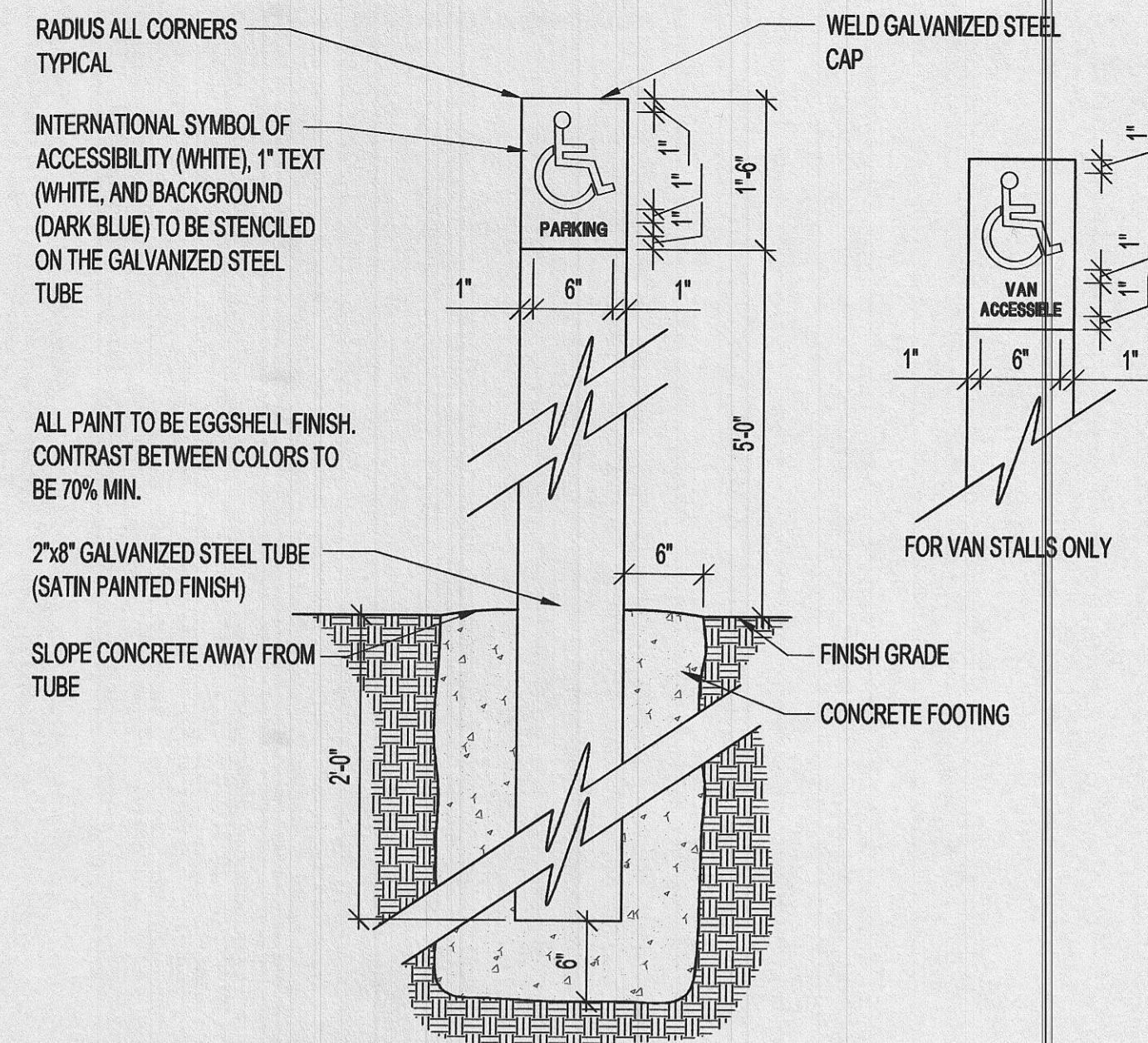
**ADA ACCESSIBLE RAMP**  
SCALE: N.T.S.

A



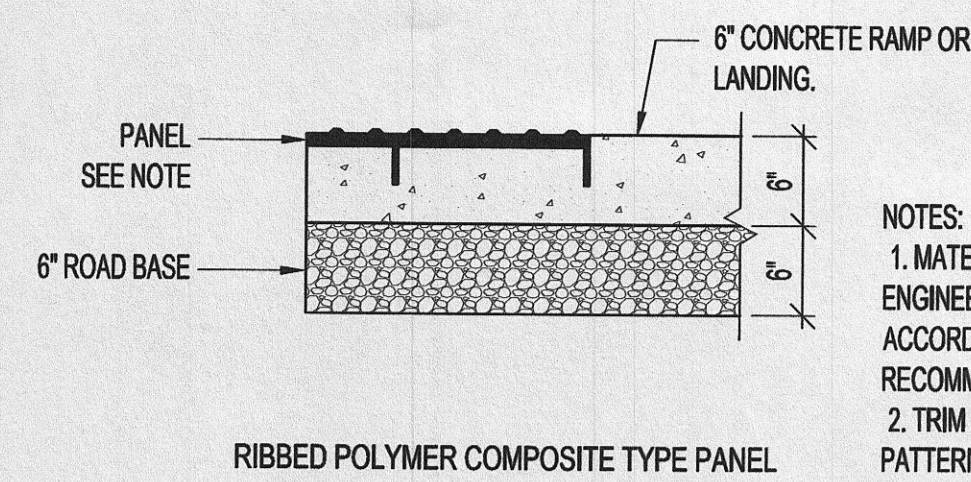
**ADA PARKING DETAIL**  
SCALE: N.T.S.

B



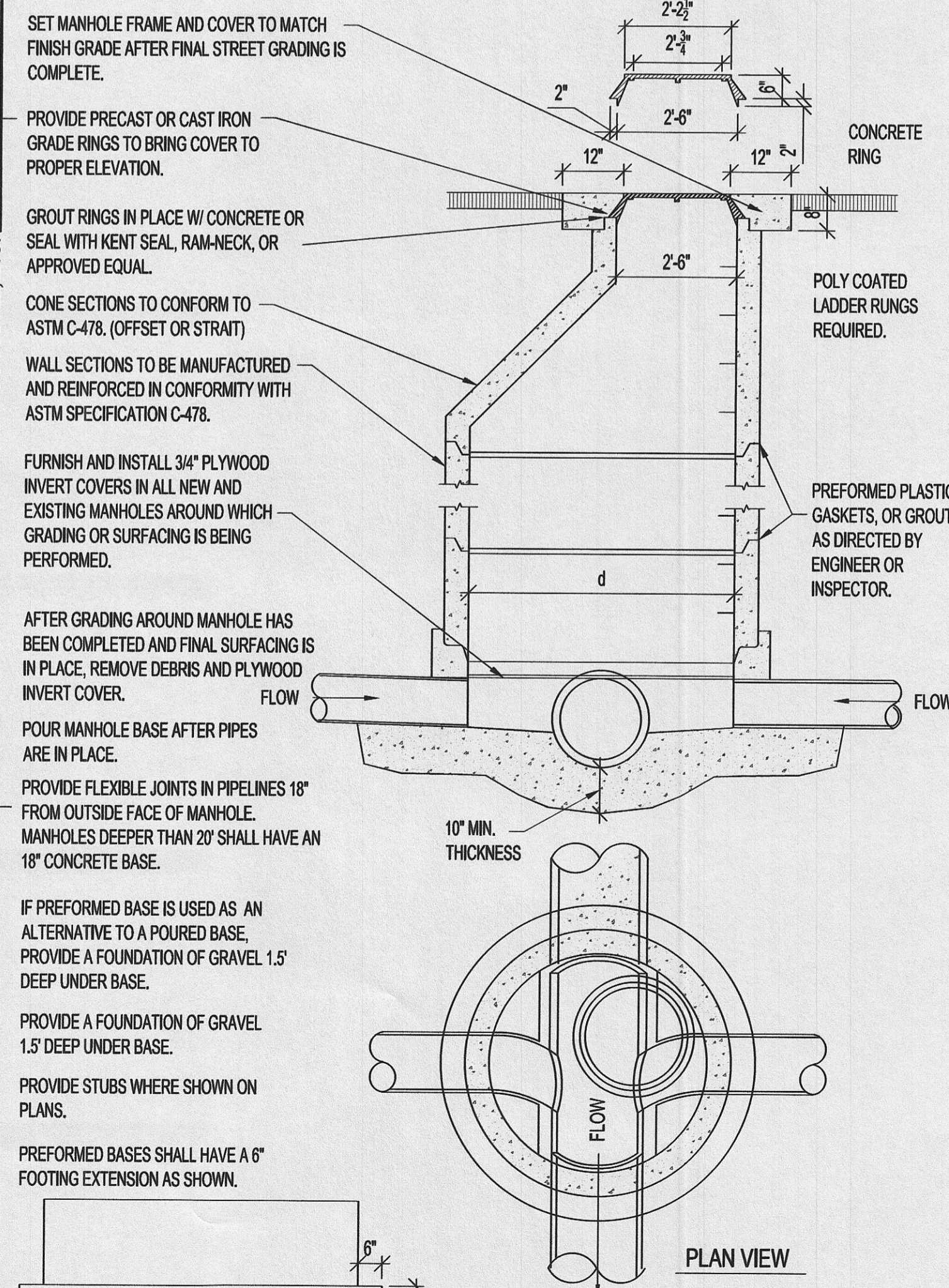
**ADA SIGN DETAIL**  
SCALE: N.T.S.

C



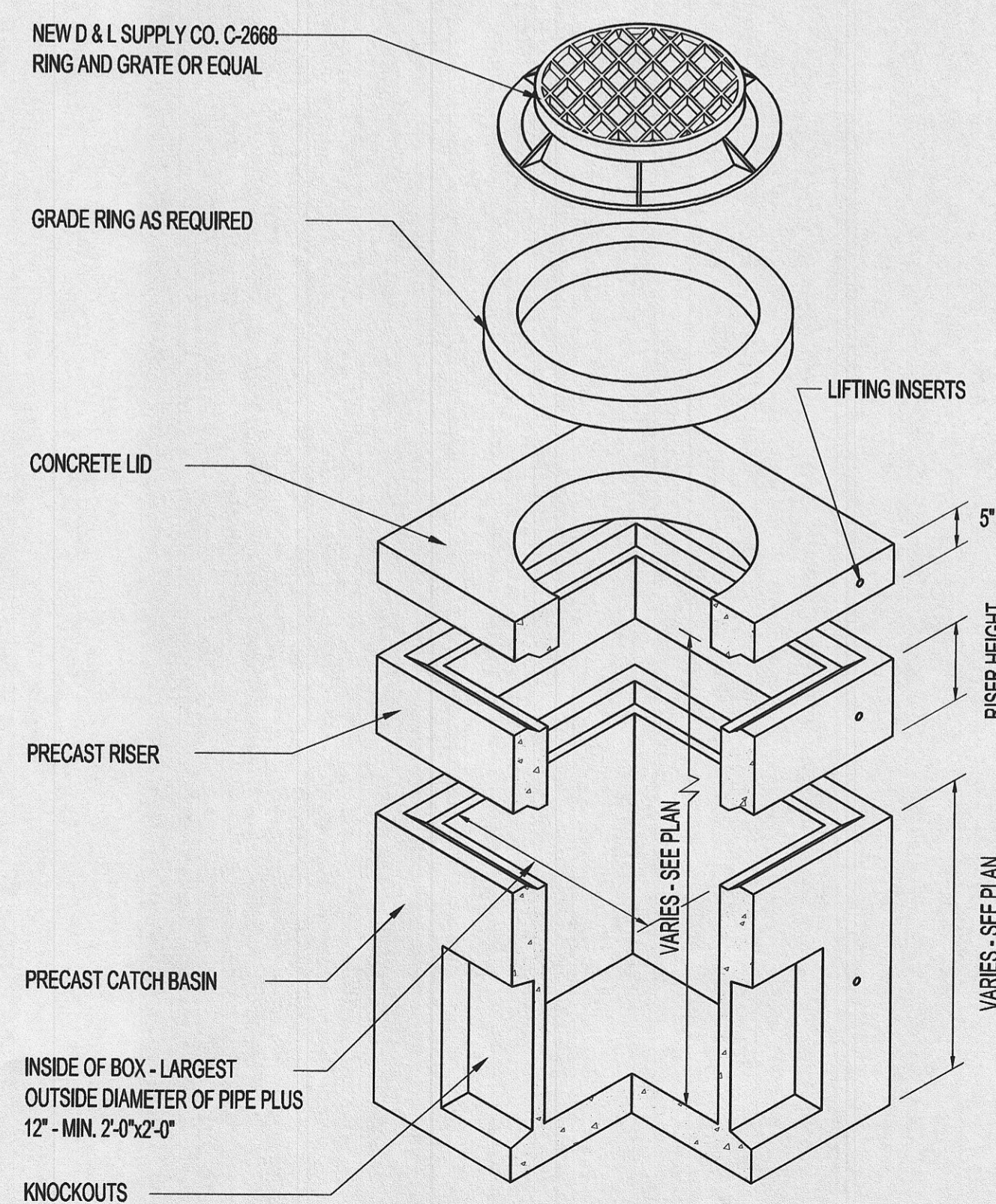
**ADA PATTERNING DETAIL**  
SCALE: N.T.S.

D



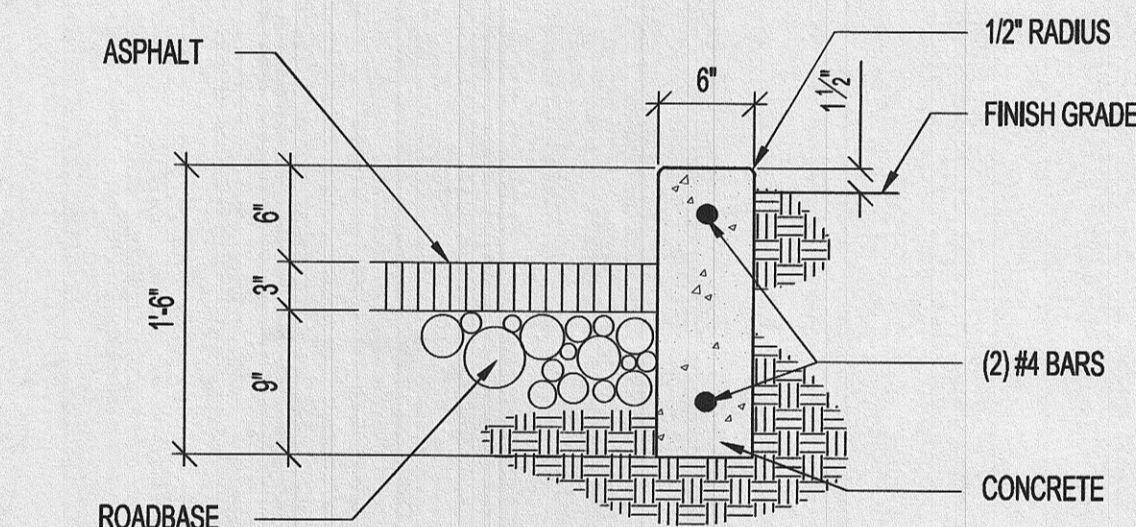
**STANDARD MANHOLE DETAIL**  
SCALE: N.T.S.

G



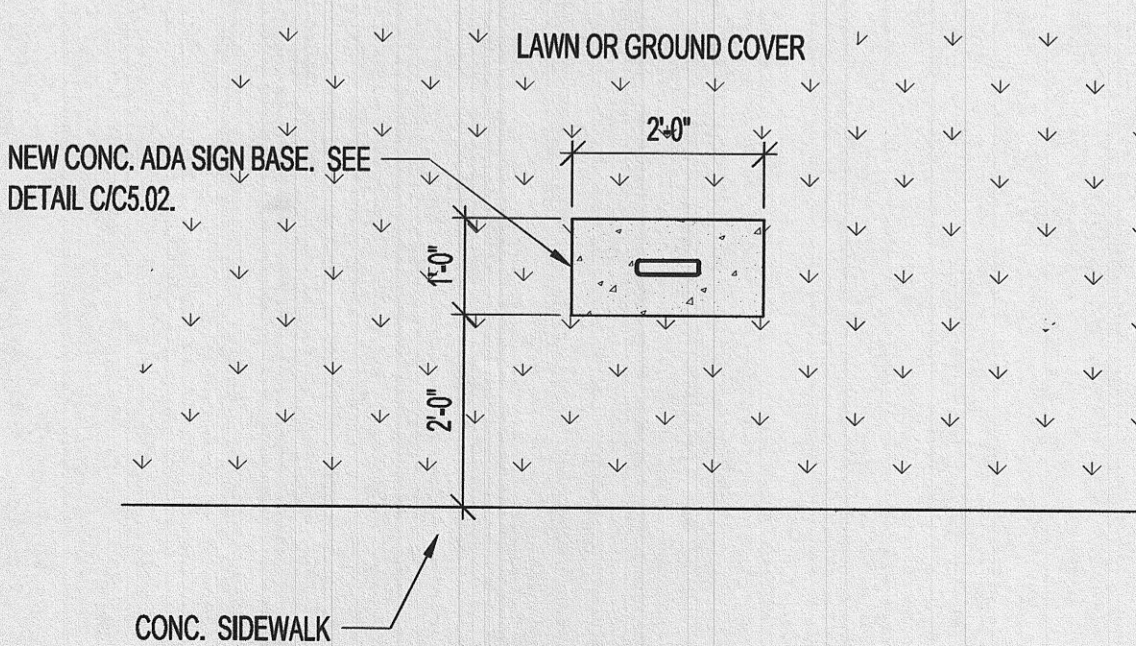
**STD CATCH BASIN**  
SCALE: N.T.S.

H



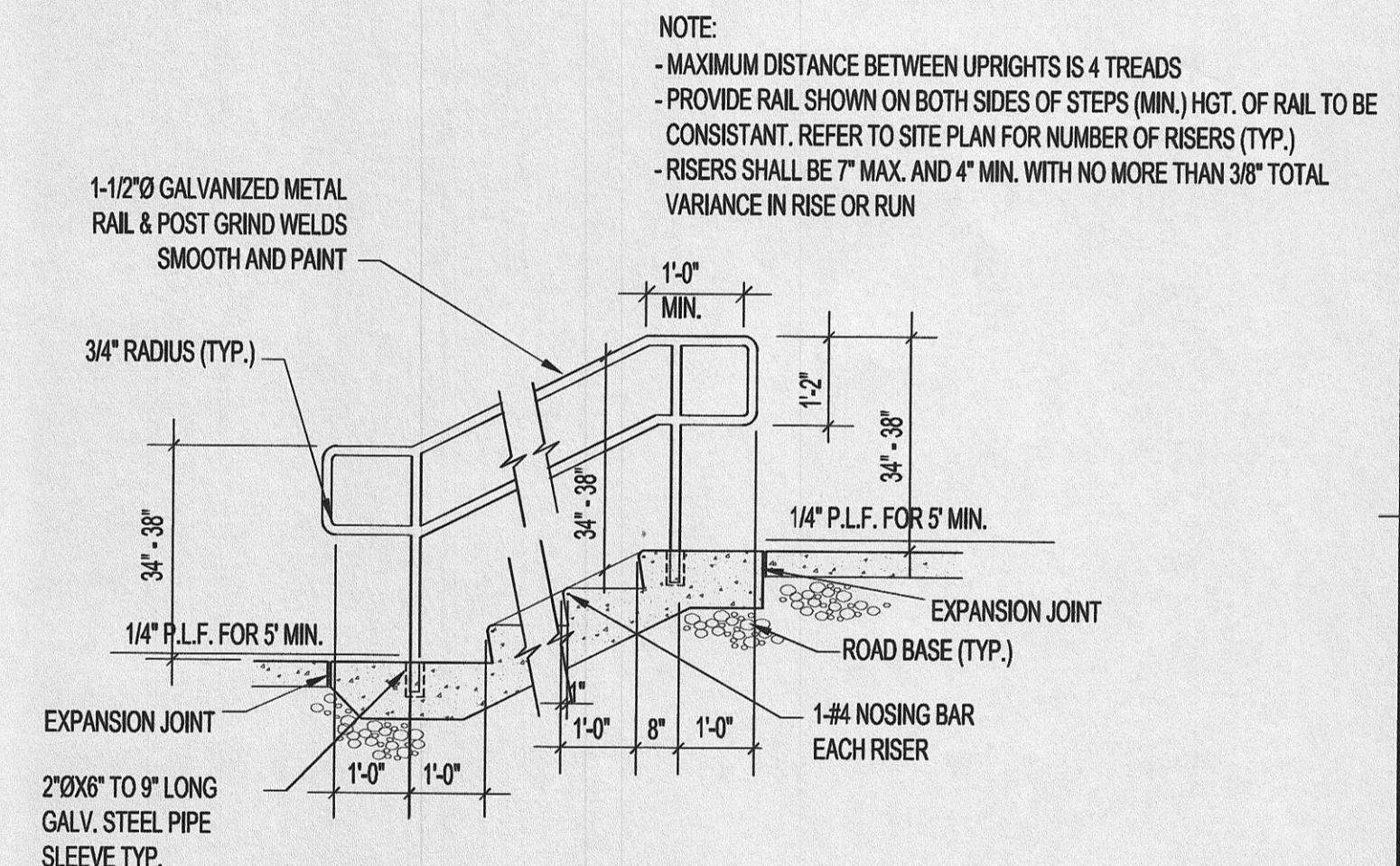
**CURB WALL DETAIL**  
SCALE: 1" = 1'-0"

E



**ADA SIGN BASE PLAN VIEW**  
SCALE: 1/2" = 1'-0"

J



**EXTERIOR STAIR DETAIL**  
SCALE: N.T.S.

F

**McNEIL GROUP**  
*Designing for the Future Since 1983™*  
 8610 So. Sandy Parkway, Suite 200 Sandy, Utah 84070  
 TEL: (801) 255-7700 FAX (801) 255-8071  
 E-MAIL: info@mcneileng.com WEB SITE: AT www.mcneil-group.com

STATE OF UTAH  
 05/03/12  
 SCOTT A. SCHOONOVER  
 349757  
 ARCHITECT

**WEST WEBER 1, 2, 3, &  
 The Church of JESUS CHRIST of Latter-Day Saints**  
 OGDEN UTAH WEBER NORTH STAKE  
 4080 WEST 900 SOUTH  
 WEST WEBER, UTAH

REVISIONS	DESCRIPTION
REV	DATE

PROJECT NO: 11358  
 CAD DWG. FILE: 11358-dlta.dwg  
 DRAWN BY: NMD/MGS  
 PROPERTY NO: 502-2681  
 DESIGNED BY: NMD  
 FIELD CREW: NMD/MGS  
 CHECKED BY: RJD  
 DATE: MAY 2012

**SHEET TITLE**  
**DETAIL SHEET**  
**C5.02**  
 SHEET 12 OF 17

C:\Users\redfish\OneDrive\Work\Projects\11358-std.dwg May 03, 2012 - 5:00pm  
 C:\Users\redfish\OneDrive\Work\Projects\11358-std.dwg May 03, 2012 - 5:00pm