

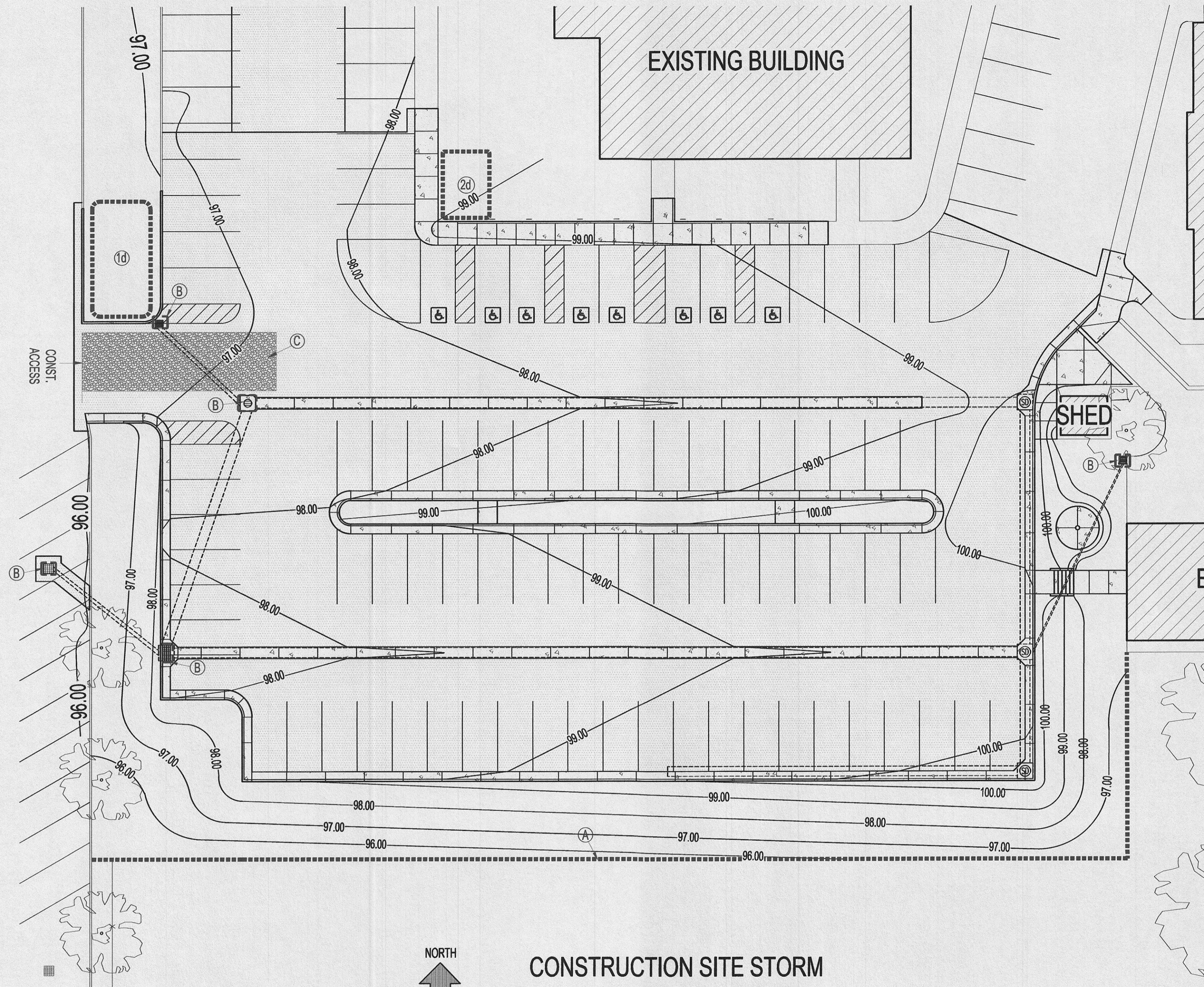
MCNEIL ENGINEERING - CIVIL, L.C.

MCNEIL ASPEN CONSULTANTS, L.C.

MCNEIL ENGINEERING STRUCTURAL, L.C.

MCNEIL ENGINEERING - SURVEYING, L.C.

4100 WEST STREET



CONSTRUCTION SITE STORM WATER MANAGEMENT PLAN

SCALE: 1" = 20'-0"

GENERAL NOTES:

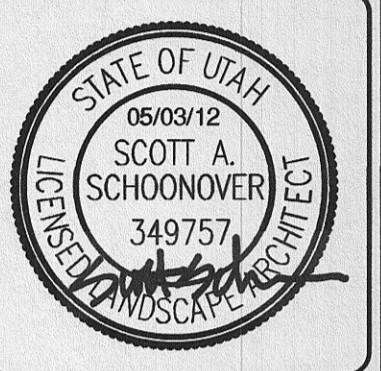
- INTENT OF STORM WATER POLLUTION PREVENTION PLAN:**
BY CONTRACT WITH THE CONTRACTOR THE PROPERTY OWNER HAS DELEGATED HIS OBLIGATION TO INSURE COMPLIANCE WITH ALL APPLICABLE STORM WATER REGULATIONS TO EFFECTIVELY PREVENT THE POTENTIALLY NEGATIVE IMPACTS OF THIS PROJECT'S CONSTRUCTION ACTIVITIES ON STORM WATER QUALITY. THE INTENT OF THIS PLAN IS TO IDENTIFY POLLUTANTS OF STORM WATER AND PRESENT POLLUTION CONTROL MEASURES THAT WILL ASSIST IN ENSURING IMPLEMENTATION AND MAINTENANCE OF BEST MANAGEMENT PRACTICES (BMP'S) AND HELP THE CONTRACTOR IN SECURING THE NECESSARY PERMITS. CONTRACTOR WILL MODIFY THIS PLAN AS REQUIRED TO MEET LOCAL REQUIREMENTS.
- BEST MANAGEMENT PRACTICES (BMP'S):**
THE CONTRACTOR IS TO USE BEST MANAGEMENT PRACTICES FOR PROVIDING EROSION CONTROL FOR CONSTRUCTION OF THIS PROJECT. SPECIFIC DETAILS SHOWN SHALL BE USED IN COMBINATION WITH OTHER ACCEPTED LOCAL PRACTICES. THE MAINTENANCE OF THE BMP'S IS THE RESPONSIBILITY OF THE PERMITTEE, AND FAILURE TO PROPERLY INSTALL OR MAINTAIN THE BMP'S MAY RESULT IN ENFORCEMENT ACTION BY THE GOVERNING AGENCIES. IF INSTALLED BMP'S FAIL, THEY MUST BE REPAIRED OR REPLACED WITH AN ACCEPTABLE ALTERNATE WITHIN 24 HOURS, OR AS SOON AS SAFE TO DO SO.
- PERMITS AND APPROVALS:**
CONTRACTOR SHALL SECURE ALL NECESSARY PERMITS. ALL MATERIALS AND WORKMANSHIP SHALL CONFORM TO THE LOCAL AGENCY'S EROSION CONTROL STANDARDS AND SPECIFICATIONS AND ALL WORK SHALL BE SUBJECT TO INSPECTION BY THE AGENCY HAVING JURISDICTION. ALSO, INSPECTORS WILL HAVE THE RIGHT TO CHANGE THE FACILITIES AS NEEDED.
- EXISTING UTILITIES:**
THE CONTRACTOR SHALL BE RESPONSIBLE FOR FIELD VERIFYING THE LOCATIONS OF ALL EXISTING UTILITIES. IF CONFLICTS OCCUR, THE CONTRACTOR SHALL NOTIFY THE ARCHITECT/ENGINEER PRIOR TO CONSTRUCTION TO DETERMINE IF ANY FIELD ADJUSTMENTS SHOULD BE MADE.
- DUST CONTROL:**
THE CONTRACTOR SHALL PROVIDE ADEQUATE DUST CONTROL. BLOWING DUST MUST BE CONTROLLED AT ALL TIMES. INSTALLATION OF A SILT FENCE AND SITE WATERING SHALL BE TO CONTROL DUST. THE USE OF MOTOR OILS AND OTHER PETROLEUM BASED OR TOXIC LIQUIDS FOR DUST SUPPRESSION IS ABSOLUTELY PROHIBITED.
- FIELD MODIFICATIONS:**
THE CONTRACTOR SHALL MODIFY EROSION CONTROL MEASURES TO ACCOMMODATE PROJECT PLANNING. ADDITIONAL EROSION CONTROL MEASURES MAY BE REQUIRED DUE TO UNFORESEEN PROBLEMS OR IF THE PLAN DOES NOT FUNCTION AS INTENDED. A REPRESENTATIVE OF THE GOVERNING AGENCIES MAY REQUIRE ADDITIONAL CONTROL DEVICES UPON INSPECTION OF PROPOSED FACILITIES.
- SCHEDULING:**
CONTRACTOR SHOULD FOLLOW A SPECIFIED WORK SCHEDULE THAT COORDINATES THE TIMING OF LAND-DISTURBING ACTIVITIES. THE REMOVAL OF SURFACE GROUND COVER LEAVES A SITE VULNERABLE TO ACCELERATED EROSION. THEREFORE:
 - LIMIT LAND CLEARING AND RESTORE PROTECTIVE COVER QUICKLY.
 - SCHEDULE PROJECTS TO DISTURB ONLY SMALL PORTIONS OF THE SITE AT ANY ONE TIME.
 - COMPLETE GRADING AS SOON AS POSSIBLE AND IMMEDIATELY STABILIZE THE DISTURBED PORTION BEFORE GRADING THE NEXT AREA.
 - STABILIZE OPEN TRENCHES AS SOON AS POSSIBLE.
 - SEQUENCE TRENCHING PROJECTS SO THAT MOST OPEN PORTIONS OF THE TRENCH ARE CLOSED BEFORE NEW TRENCHING IS BEGUN.
 - DURING THE RAINY SEASON THE AMOUNT OF EXPOSED SOIL ALLOWED AT ONE TIME SHALL NOT EXCEED THAT WHICH CAN BE ADEQUATELY PROTECTED BY THE PROPERTY OWNER IN THE EVENT OF A RAINSTORM.
 - 100% OF ALL SUPPLIES NEEDED FOR BMP MEASURES SHALL BE RETAINED ON THE JOB SITE IN A MANNER THAT ALLOWS FULL DEPLOYMENT AND COMPLETE INSTALLATION IN 48 HOURS OR LESS OF A FORECAST RAIN.
 - WHEN GRADING OPERATIONS HAVE BEEN COMPLETED AND THE DISTURBED GROUND SHALL BE LEFT "OPEN" FOR 30 DAYS OR MORE THE AREA SHALL BE FURROWED PARALLEL TO THE CONTOURS OF THE AREA.
- MAINTENANCE:**
 - ALL EROSION CONTROL MEASURES SHALL BE MAINTAINED IN FULLY FUNCTIONAL CONDITION UNTIL FINAL STABILIZATION OF THE SITE.
 - ALL EROSION AND SEDIMENTATION CONTROL MEASURES SHALL BE CHECKED BY A QUALIFIED PERSON AT LEAST ONCE EVERY SEVEN CALENDAR DAYS AND WITHIN 24 HOURS OF THE END OF A RAINFALL EVENT. ANY NEEDED CLEANING AND REPAIRS SHALL BE DONE IMMEDIATELY UPON DISCOVERY.
 - THE CONTRACTOR SHALL BE RESPONSIBLE FOR ADJUSTING THE EROSION CONTROL MEASURES (SILT FENCES, STRAW BALES, ETC.) DUE TO GRADE CHANGES DURING THE DEVELOPMENT OF THE PROJECT.
 - THE OWNER'S REPRESENTATIVE SHALL MAKE ROUTINE CHECKS ON ALL EROSION CONTROL MEASURES TO DETERMINE IF REPAIRS OR SEDIMENT REMOVAL IS NECESSARY. DUE TO CONDITIONS THAT MAY ARISE IN THE FIELD, ADDITIONAL CONTROL MAY BE DETERMINED TO BE NECESSARY.
 - SILT FENCE BARRIERS SHALL BE INSPECTED IMMEDIATELY AFTER EACH RAINFALL AND AT THE LEAST DAILY DURING PROLONGED RAINFALL. CLOSE ATTENTION SHALL BE PAID TO THE REPAIR OF DAMAGED SILT FENCES, END RUNS, AND UNDERCUTTING BENEATH SILT FENCING. NECESSARY REPAIRS TO BARRIERS OR REPLACEMENT OF SILT FENCING SHALL BE ACCOMPLISHED PROMPTLY.
 - SEDIMENT DEPOSITS SHOULD BE REMOVED AFTER EACH RAINFALL. THEY MUST BE REMOVED WHEN THE LEVEL OF DEPOSITION REACHES APPROXIMATELY ONE-HALF THE HEIGHT OF THE BARRIER.
- STREETS:**
THE CONTRACTOR IS RESPONSIBLE FOR KEEPING THE STREETS CLEAN AND FREE FROM DEBRIS DEPOSITED BY TRAFFIC FROM THE SITE. CONTRACTOR SHALL USE VEHICLE TRACKING CONTROL AT ALL LOCATIONS WHERE VEHICLES WILL ENTER OR EXIT THE SITE. CONTROL FACILITIES SHALL BE MAINTAINED WHILE CONSTRUCTION IS IN PROGRESS, MOVED WHEN NECESSARY, AND REMOVED WHEN THE SITE IS PAVED.

- WASH WATER:**
ALL WASH WATER (CONCRETE TRUCKS, VEHICLE CLEANING, ETC.) SHALL BE DISPOSED OF IN A MANNER THAT PREVENTS CONTACT WITH STORM WATER DISCHARGES FROM THE SITE. ALL UTILITY LINES SHALL BE CLEANED OF DIRT AND DEBRIS PRIOR TO BEING PUT INTO SERVICE. DOWNGRADE LINES MUST BE PROTECTED FROM WASH-WATER DURING THE CLEANING TO AVOID CONTAMINATION AND COMPROMISING OUTFALL CLEANLINESS.
- LIMITS OF DISTURBANCE:**
THE LIMITS OF DISTURBANCE ARE TO BE STAKED BEFORE STARTING ANY CONSTRUCTION.
- EROSION CONTROL MEASURES:**
 - TOPS OF ALL SLOPES TO BE DIKED OR TRENCHED TO PREVENT WATER FROM FLOWING OVER THE CREST OF SLOPES.
 - MANUFACTURED SLOPES AND PADS SHALL BE ROUNDED VERTICALLY AND HORIZONTALLY AS APPROPRIATE TO BLEND WITH THE SURROUNDING TOPOGRAPHY.
 - APPROVED SLOPE PROTECTION MEASURES SHALL PROCEED IMMEDIATELY BEHIND THE EXPOSURE OF CUT SLOPES AND/OR THE CREATION OF EMBANKMENT SLOPES.
 - CATCH BASINS, DE-SILTING BASINS AND STORM DRAIN SYSTEM SHALL BE INSTALLED TO THE SATISFACTION OF THE GOVERNING AGENCIES.
 - SAND BAG CHECK DAMS TO BE PLACED IN A MANNER APPROVED BY THE GOVERNING AGENCIES IN UNPAVED STREETS WITH GRADIENTS IN EXCESS OF 2% AND ON OR IN OTHER GRADED OR EXCAVATED AREAS AS REQUIRED BY THE GOVERNING AGENCIES.
- SILTATION AND SEDIMENT CONTROL MEASURES:**
 - SEDIMENT BASINS SHALL BE PROVIDED AT THE LOWER END OF EVERY DRAINAGE AREA PRODUCING SEDIMENT RUNOFF. THE BASINS SHALL BE MAINTAINED AND CLEANED AFTER EVERY RUNOFF PRODUCING STORM. THE BASINS SHOULD BE SEMI-PERMANENT STRUCTURES THAT WOULD REMAIN UNTIL SOIL STABILIZING VEGETATION HAS BECOME WELL ESTABLISHED ON ALL ERODIBLE SLOPES.
 - SEWER OR STORM DRAIN TRENCHES THAT ARE CUT THROUGH BASIN DIKES OR BASIN INLET DIKES SHALL BE PLUGGED WITH SANDBAGS FROM TOP OF PIPE TO TOP OF DIKE.
 - AFTER UTILITY TRENCHES ARE BACK-FILLED AND COMPACTED, THE SURFACES OVER SUCH TRENCHES SHALL BE MOUNDING SLIGHTLY TO PREVENT CHANNELING OF WATER IN THE TRENCH AREA. CARE SHOULD BE EXERCISED TO PROVIDE FOR CROSS FLOW AT FREQUENT INTERVALS WHERE TRENCHES ARE NOT ON THE CENTERLINE OF A CROWNED STREET.
 - PROVIDE A SANDBAG SILT BASIN OR TRAP BY EVERY STORM DRAIN INLET TO PREVENT SEDIMENT FROM ENTERING DRAINAGE SYSTEM.
 - ANY PROPOSED ALTERNATIVE CONTROL MEASURES MUST BE APPROVED IN ADVANCE BY ALL RESPONSIBLE AGENCIES, I.E., CITY ENGINEER, DEPARTMENT OF FLOOD CONTROL, ETC.
- OTHER CONTROLS:**
 - WASTE DISPOSAL:**
 - KEEP WASTE DISPOSAL CONTAINERS COVERED.
 - PROVIDE FOR A WEEKLY (OR MORE FREQUENT, IF NECESSARY) DISPOSAL OF WASTE CONTAINERS.
 - PROVIDE CONTAINERS AT CONVENIENT LOCATIONS AROUND THE SITE.
 - SWEEPING A SITE:**
 - PROVIDE WEEKLY SWEEPING BY HAND OR MECHANICAL MEANS TO KEEP THE PAVED AREAS OF THE SITE FREE OF DUST, DIRT AND DEBRIS.
 - DISPOSE OF ACCUMULATED DIRT IN THE WASTE CONTAINERS, OR HAUL IT OFF THE SITE TO A LANDFILL.
 - SANITARY/SEPTIC DISPOSAL:**
 - PORTABLE TOILETS AND OTHER SANITARY FACILITIES SHALL BE SERVICED WEEKLY AND PUMPED CLEAN BY A WASTE DISPOSAL COMPANY. NO TOXIC OR HAZARDOUS WASTE SHALL BE DISPOSED OF IN A PORTABLE TOILET OR IN THE ON-SITE SANITARY SEWER.
 - SPILLS:**
 - STORE ADEQUATE ABSORBENT MATERIALS, RAGS, BROOMS, SHOVELS, AND WASTE CONTAINERS ON THE SITE TO CLEAN UP SPILLS ON MATERIALS SUCH AS FUEL, PAINT, SOLVENTS OR CLEANERS. CLEAN UP MINOR SPILLS IMMEDIATELY.
 - FOR REPORTABLE QUANTITY OF HAZARDOUS OR TOXIC SUBSTANCE, SECURE THE SERVICES OF QUALIFIED PERSONNEL FOR CLEANUP AND DISPOSAL.
 - VEHICLES AND EQUIPMENT:**
 - FIX LEAKS OF FUEL, OIL AND OTHER SUBSTANCES IMMEDIATELY.
 - PERFORM REFUELING AND SERVICE OF VEHICLES OR EQUIPMENT OFF-SITE WHEN POSSIBLE. IF REFUELING OR SERVICE OF EQUIPMENT IS PERFORMED ON-SITE, THEN PROVIDE AN IMPERVIOUS, CONTAINED AREA WHERE ANY SPILLS CAN BE CONTAINED WITHOUT FALLING TO A STORM WATER INLET OR INTO THE GROUND.
 - USE DRIP PANS TO CATCH LEAKS AND SMALL SPILLS.
 - CONCRETE TRUCKS, MIXERS AND HANDLING EQUIPMENT:**
 - DO NOT DISPOSE OF WASHOUT FROM THE WASHING OF CONCRETE TRUCKS, MIXERS AND HANDLING EQUIPMENT WHERE IT WILL FLOW INTO THE STORM WATER OR INTO A PUBLIC STREET.
 - PROVIDE A HOLDING TANK TO RECEIVE THE WASHOUT FROM CONCRETE EQUIPMENT. DISPOSAL OF TANK CONTENTS SHOULD BE CONDUCTED BY A WASTE HANDLING FIRM.
 - PROVIDE A DESIGNATED AREA FOR WATCHING ANY VEHICLES OR EQUIPMENT. DRAINAGE FROM THIS AREA SHOULD FLOW TO THE HOLDING TANK.
 - LANDSCAPING:**
 - USE ONLY THE MINIMUM AMOUNT OF LANDSCAPING FERTILIZERS, NUTRIENTS AND OTHER CHEMICALS THAT ARE NEEDED.
 - DO NOT OVER WATER, FERTILIZE OR TREAT LANDSCAPED AREAS. MINIMIZE RUNOFF OF IRRIGATION WATER FROM LANDSCAPING.
 - STORM WATER INLETS:**
 - KEEP ALL ON-SITE STORM WATER INLETS CLEAN AND FREE OF DIRT AND DEBRIS. IN THE EVENT THAT SEDIMENT AND DEBRIS MAY FLOW TO AN INLET, PROVIDE AND 18-INCH (MINIMUM) STRAIN BARRIER AROUND THE INLET TO TRAP THE DIRT AND DEBRIS AND ALLOW ONLY CLEAN STORM WATER TO ENTER THE INLET.

SWPPP SCOPE OF WORK

- INSTALL STRAW BALE BARRIER OR SILT FENCE AT LOCATIONS SHOWN ON PLAN. SEE SHEET C4.02.
- INSTALL SILT SOCK AT OPEN DRAINAGE GRATES AND IN GUTTERS, ALL LOCATIONS IN AREA OF DISTURBANCE. SEE DETAIL A/C4.02.
- INSTALL TRUCK WASH-OFF AREA IN AREAS INDICATED ON PLANS. SEE SHEET C4.02.
- CONTRACTOR TO PROVIDE STAGING AREA CONTAINING BMP FACILITIES AS FOLLOWS:
 - CONCRETE WASTE MANAGEMENT - SEE SHEET C4.03.
 - PORTABLE TOILETS - SEE SHEET C4.02.
- PLACE TEMPORARY SIGNS AT NORTH WEST ENTRANCE INDICATING CONSTRUCTION ACCESS. INSTALL TEMPORARY SIGNS AT ALL OTHER ENTRANCES INDICATING NO CONSTRUCTION ACCESS.
- CONTRACTOR IS TO REMOVE INLET PROTECTION FROM CATCH BASINS AND CLEAN-OUT ALL CATCH BASINS BEFORE LEAVING THE SITE.

McNEIL GROUP
 Designing for the Future Since 1983™
 8610 So. Sandy Parkway, Suite 200 Sandy, Utah 84070
 TEL. (801) 255-7700 FAX (801) 255-8071
 E-MAIL: info@mcneileng.com WEB SITE: AT www.mcneil-group.com



WEST WEBER 1, 2, 3, & OGDEN UTAH WEBER NORTH STAKE
 4080 WEST 900 SOUTH WEST WEBER, UTAH

The Church of Jesus Christ of Latter-Day Saints

| REV | DATE | DESCRIPTION |
|-----|------|-------------|
| | | |
| | | |
| | | |
| | | |
| | | |
| | | |
| | | |
| | | |

PROJECT NO: 11358
 CAD DWG FILE: 11358-silt.dwg
 DRAWN BY: NMD/MGS
 PROPERTY NO: 502-2681
 DESIGNED BY: NMD
 FIELD CREW: NMD/MGS
 CHECKED BY: RJD
 DATE: MAY 2012

SHEET TITLE
CONST. SITE STORM WATER MANAGEMENT

C4.01
 SHEET 8 OF 17