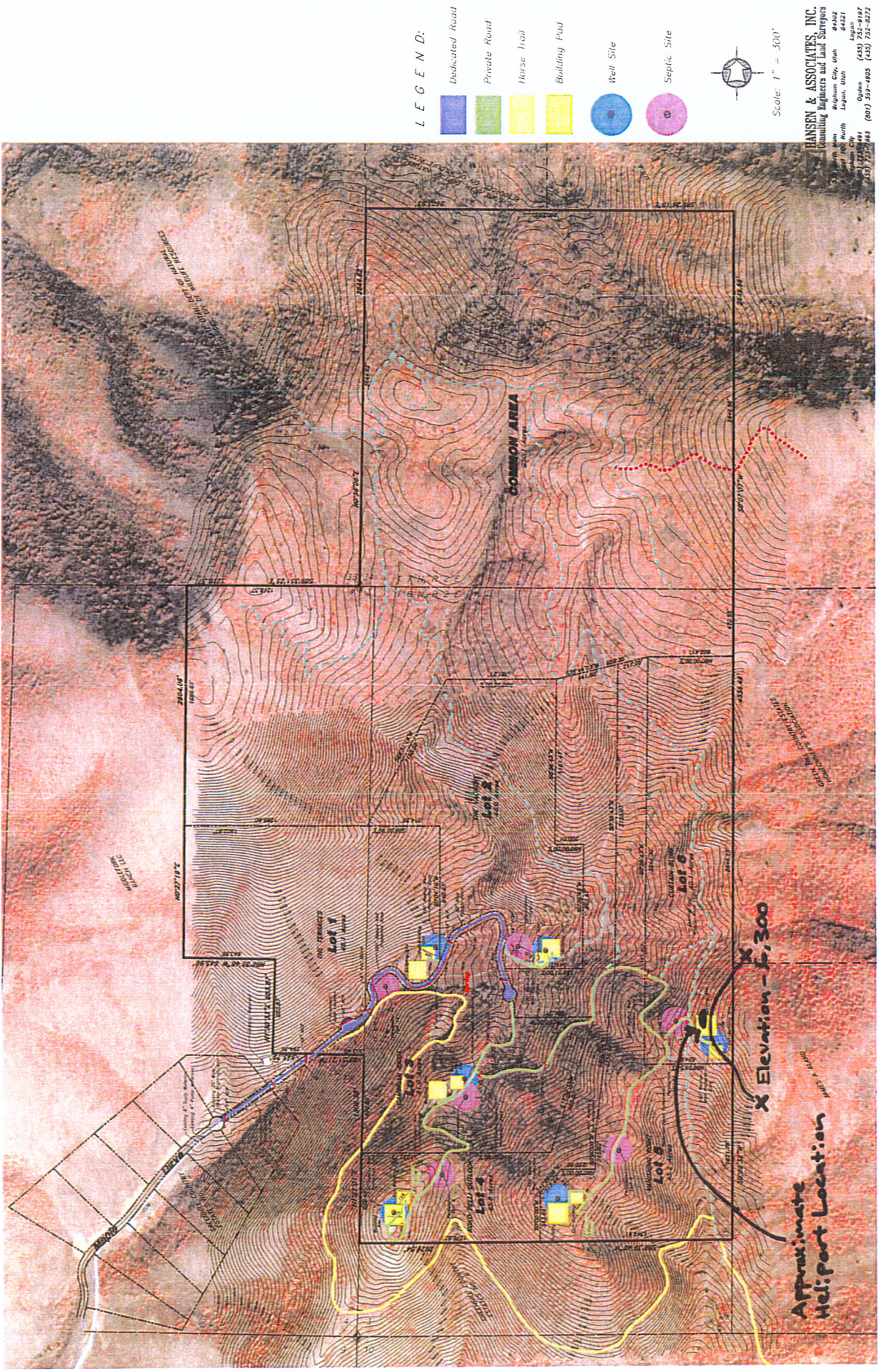
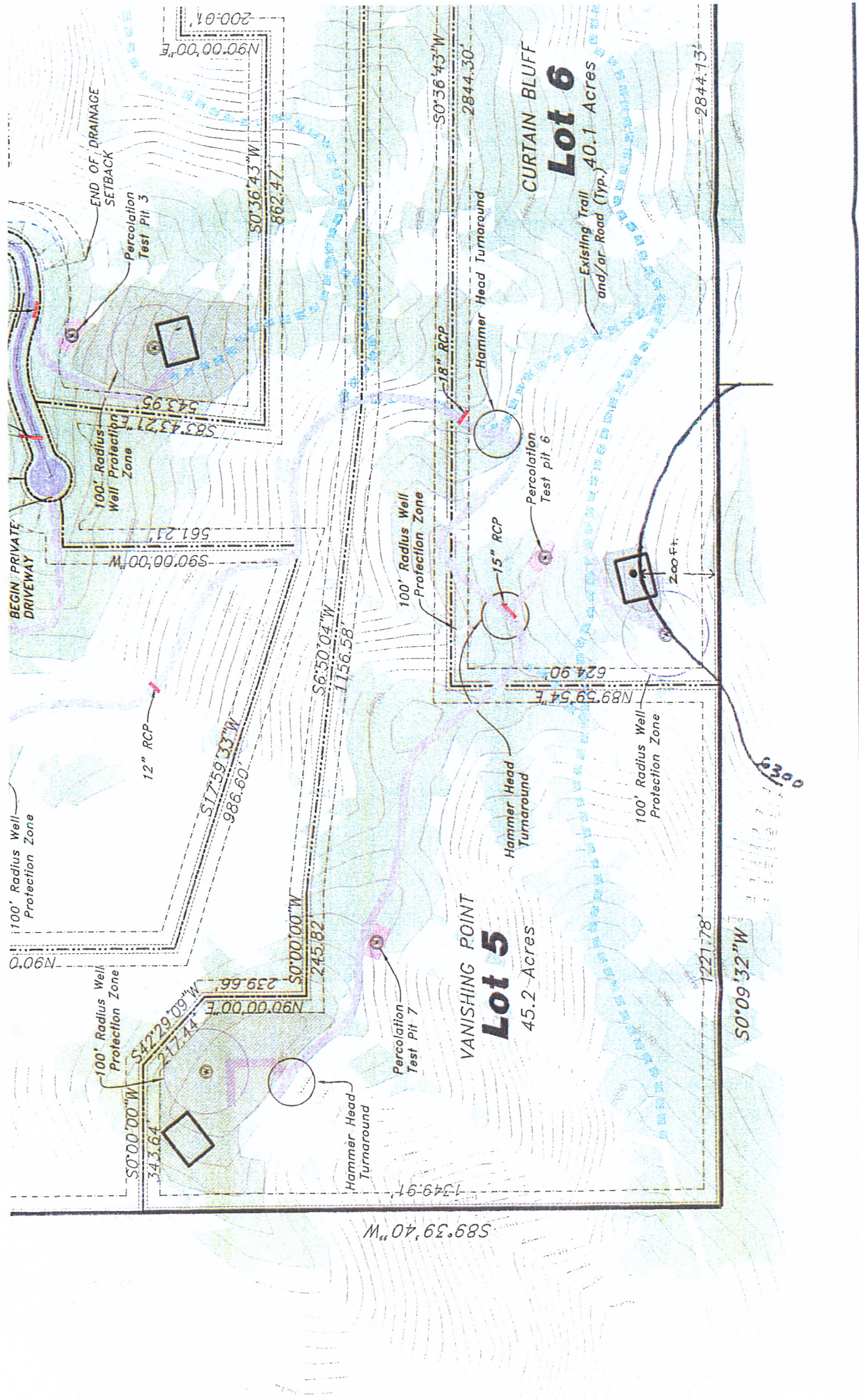


Exhibit B

SANCTUARY

HUNTSVILLE, WEBER COUNTY, UTAH





LOT 4. N 41.16. 864' LOT 5. N 41.16. 000' LOT 6. N 41.16. 015'
 W 111.43. 167' W 111.42. 899' W 111.42. 676'
 6210' FEET 6303' FEET 6305' FEET

Surveyor's Certificate

FINAL PLAT
THE SANCTUARY
 A Part of Section 3 & 4, T6N, R2E, S16M
 Weber County, Utah

MODJERIK RANCH, LLC
 210010000

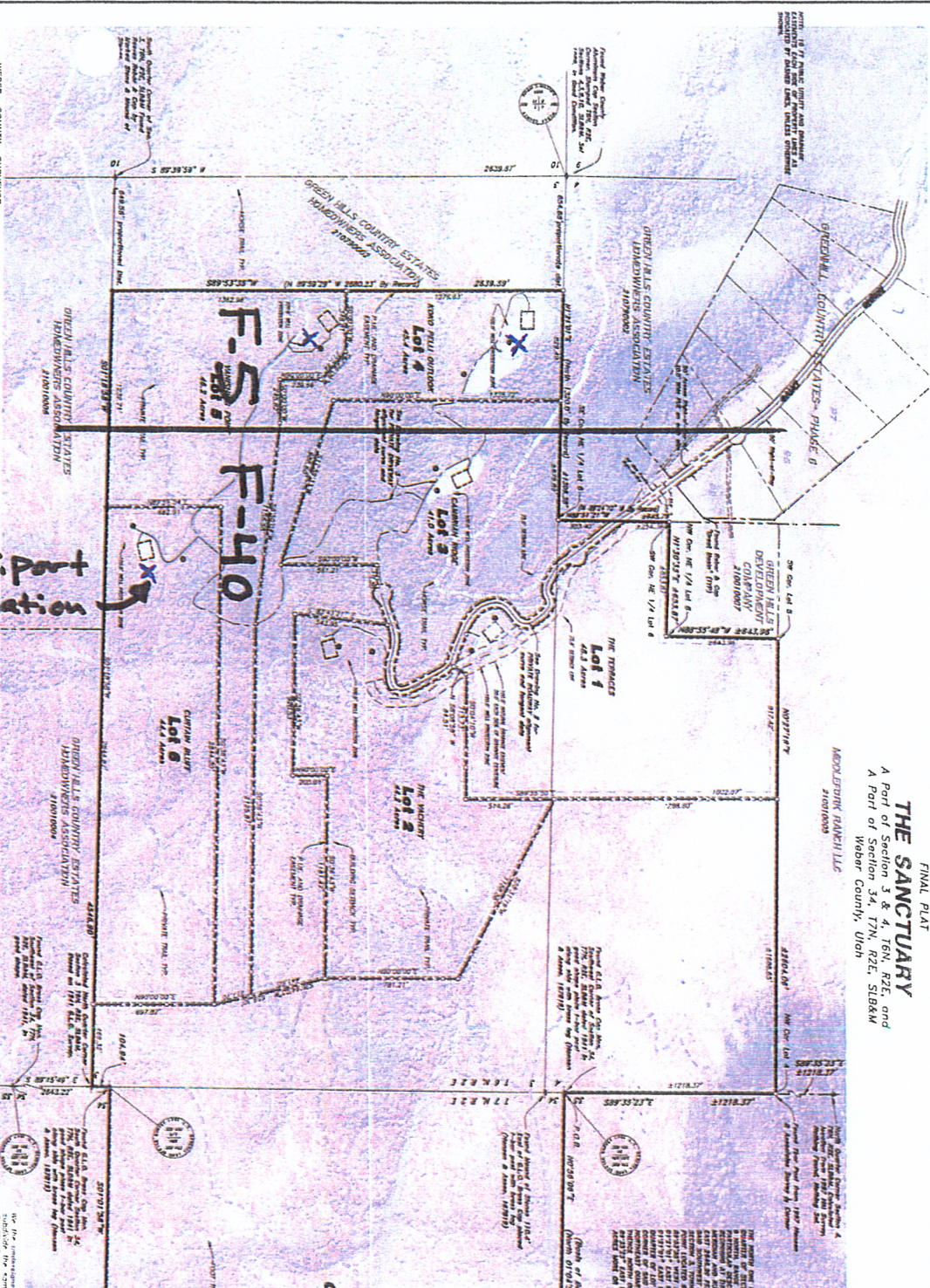
Boundary Description



I, K. Doug Anderson, a registered Professional Surveyor in the State of Utah, do hereby certify that I have personally supervised the surveying and mapping of the above described land, and that the same is true and correct in accordance with the laws of the State of Utah. I have also personally examined the original field notes and computations, and the same are true and correct in accordance with the laws of the State of Utah. I have also personally examined the original field notes and computations, and the same are true and correct in accordance with the laws of the State of Utah.

K. Doug Anderson License No. 2011
 State of Utah 2011

Scale: 1" = 300'



Helipad Location

WEBER COUNTY SURVEYOR
 I hereby certify that the subdivision, easements, and other matters herein shown and defined by this plat are true and correct in accordance with the laws of the State of Utah, and that the same have been approved by the Board of Commissioners of Weber County, Utah, on this _____ day of _____, 2011.

 Surveyor

WEBER COUNTY ATTORNEY
 I have examined the instrument, and the same is true and correct in accordance with the laws of the State of Utah, and that the same have been approved by the Board of Commissioners of Weber County, Utah, on this _____ day of _____, 2011.

 Attorney

WEBER COUNTY PLANNING COMMISSION
 I have examined the instrument, and the same is true and correct in accordance with the laws of the State of Utah, and that the same have been approved by the Board of Commissioners of Weber County, Utah, on this _____ day of _____, 2011.

 Chairman, Weber County Planning Commission

WEBER COUNTY ENGINEER
 I have examined the instrument, and the same is true and correct in accordance with the laws of the State of Utah, and that the same have been approved by the Board of Commissioners of Weber County, Utah, on this _____ day of _____, 2011.

 Engineer

HANSEN & ASSOCIATES, INC.
 Consulting Engineers and Land Surveyors
 538 North Main Street, Ogden, Utah 84402
 Phone: (435) 725-3481 (435) 285-4566 (435) 232-4572

SHEET 1 of 3
 FINAL PLAT
 THE SANCTUARY