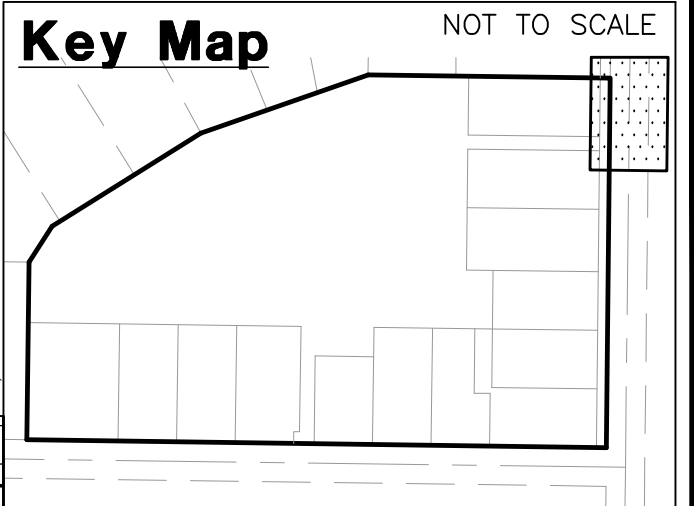
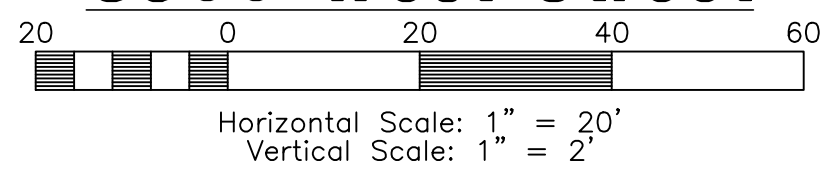
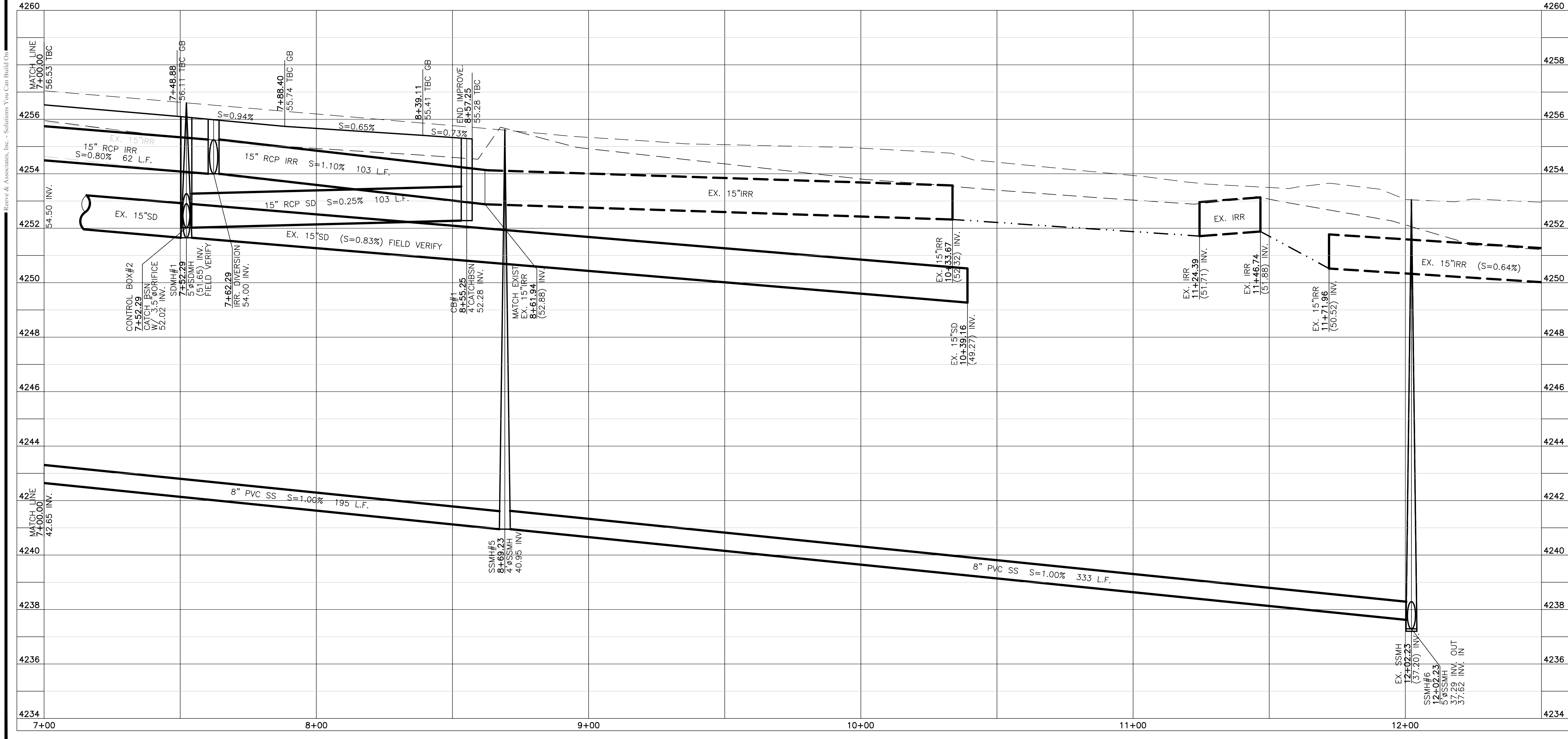


3500 West Street



Construction Notes:

- 1) ALL CONSTRUCTION IS TO CONFORM TO THE STANDARD DRAWINGS AND SPECIFICATIONS OF WEBER COUNTY.
 - 2) CONSTRUCT HANDICAP RAMP PER ADA AND COUNTY REQUIREMENTS.
- CULINARY WATER**
W/8 - 8" PVC C-900 CLASS 200 WATER
- SANITARY SEWER**
SS/8 - 8" PVC SDR-35 SEWER LINE
SS/12 - 12" PVC SDR-35 SEWER LINE
- STORM DRAIN**
SD/15 - 15" RCP STORM DRAIN
- IRRIGATION WATER**
IRR/15 - 15" RCP IRRIGATION LINE

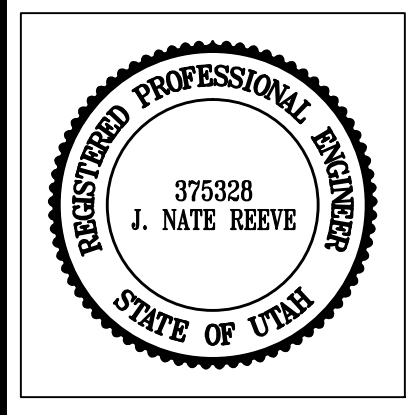


Blue Stakes Location Center
Call: Toll Free 1-800-662-4111
Two Working Days Before You Dig

Reeve & Associates, Inc.
920 CHAMBERS STREET, SUITE #14, OGDEN, UTAH 84403
TEL: (801) 621-3100 FAX: (801) 621-2666 www.reeve-assoc.com
LAND PLANNERS • CIVIL ENGINEERS • LAND SURVEYORS
TRAFFIC ENGINEERS • STRUCTURAL ENGINEERS • LANDSCAPE ARCHITECTS

REVISIONS	DESCRIPTION

Allen Horseplay Cluster Subdivision
WEBER COUNTY, UTAH
3500 West Street
7+00.00 - 12+50.00



Project Info.
Engineer: J. NATE REEVE, P.E.
Drafted: R. HANSEN
Begin Date: AUGUST 10, 2012
Name: ALLEN HORSEPLAY CLUSTER SUBDIVISION
Number: 5125-02