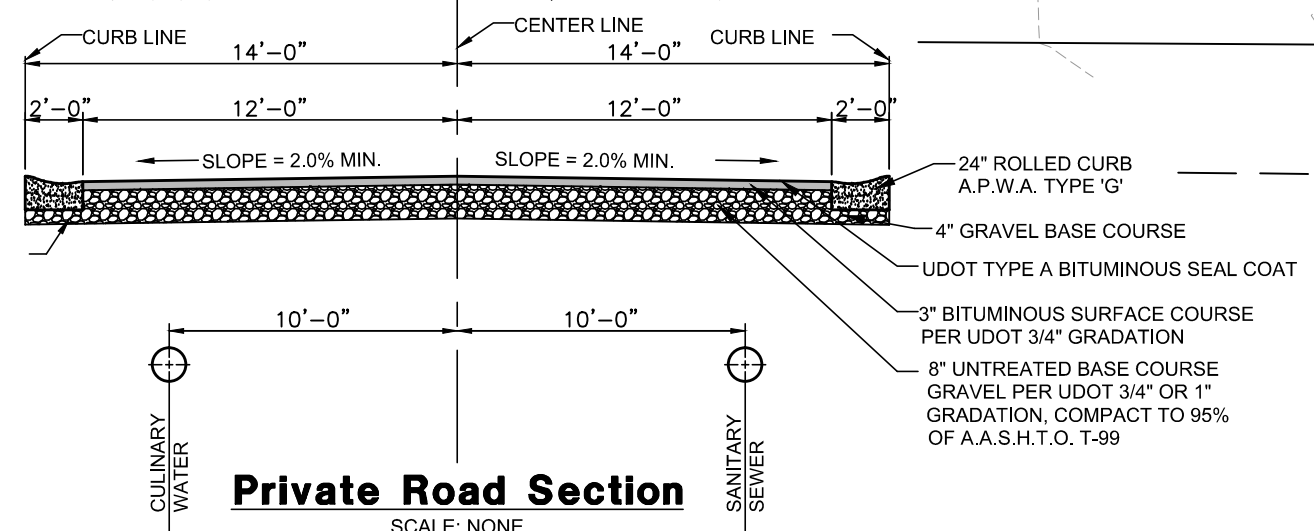
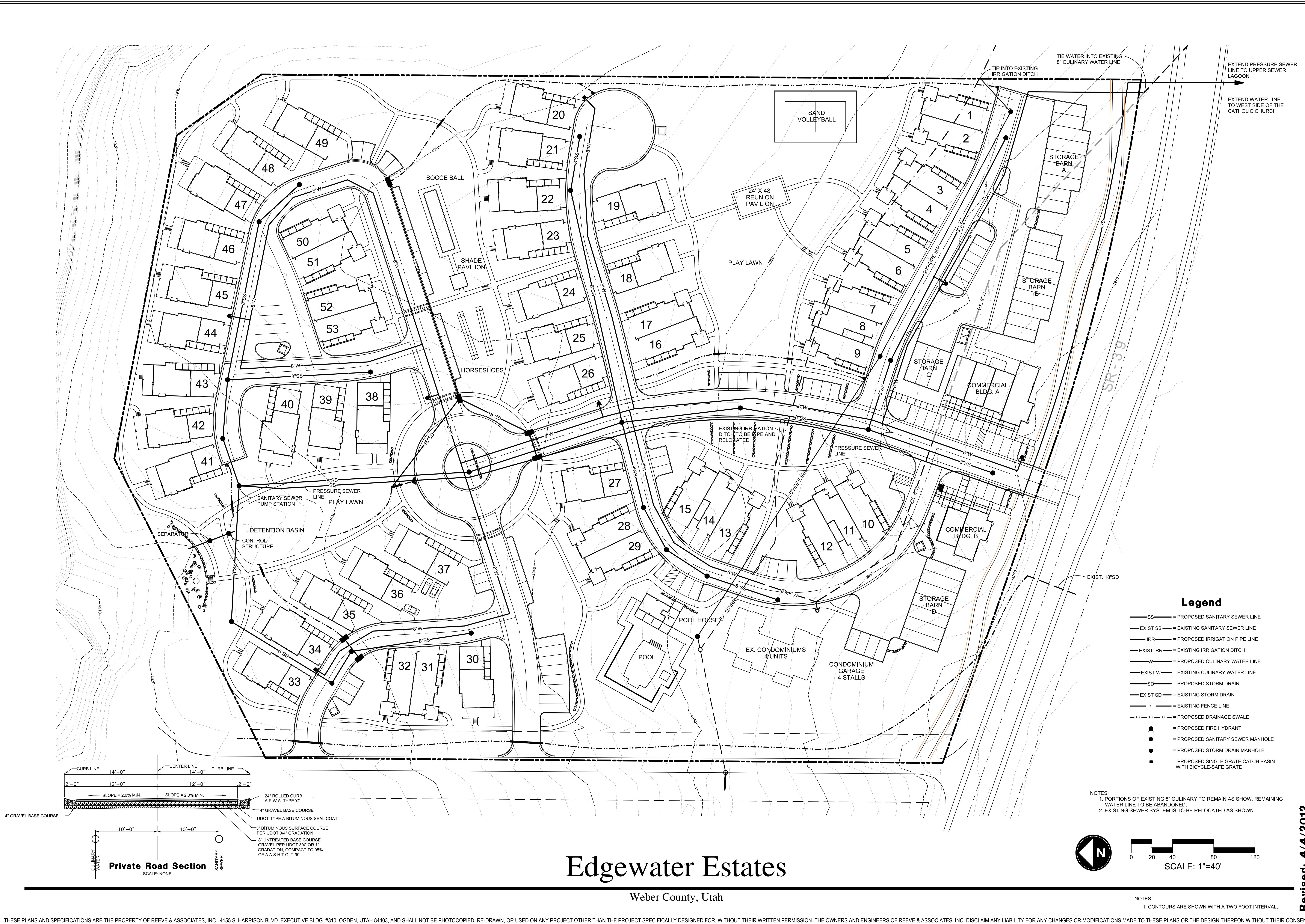


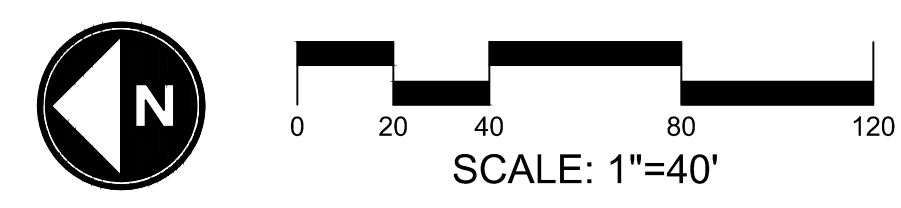


REV.	DATE
PROJECT #	5917-15
DATE	02/28/12
TITLE	UTILITY PLAN
SHEET	C1.1



- Legend**
- SS— = PROPOSED SANITARY SEWER LINE
 - EXIST SS— = EXISTING SANITARY SEWER LINE
 - IRR— = PROPOSED IRRIGATION PIPE LINE
 - EXIST IRR— = EXISTING IRRIGATION DITCH
 - W— = PROPOSED CULINARY WATER LINE
 - EXIST W— = EXISTING CULINARY WATER LINE
 - SD— = PROPOSED STORM DRAIN
 - EXIST SD— = EXISTING STORM DRAIN
 - = EXISTING FENCE LINE
 - = PROPOSED DRAINAGE SWALE
 - = PROPOSED FIRE HYDRANT
 - = PROPOSED SANITARY SEWER MANHOLE
 - = PROPOSED STORM DRAIN MANHOLE
 - = PROPOSED SINGLE GRATE CATCH BASIN WITH BICYCLE-SAFE GRATE

NOTES:
 1. PORTIONS OF EXISTING 8" CULINARY TO REMAIN AS SHOWN, REMAINING WATER LINE TO BE ABANDONED.
 2. EXISTING SEWER SYSTEM IS TO BE RELOCATED AS SHOWN.



Edgewater Estates

Weber County, Utah

Revised: 4/4/2012
 THIS DOCUMENT IS THE PROPERTY OF BERTOLDI ARCHITECTS © 2012