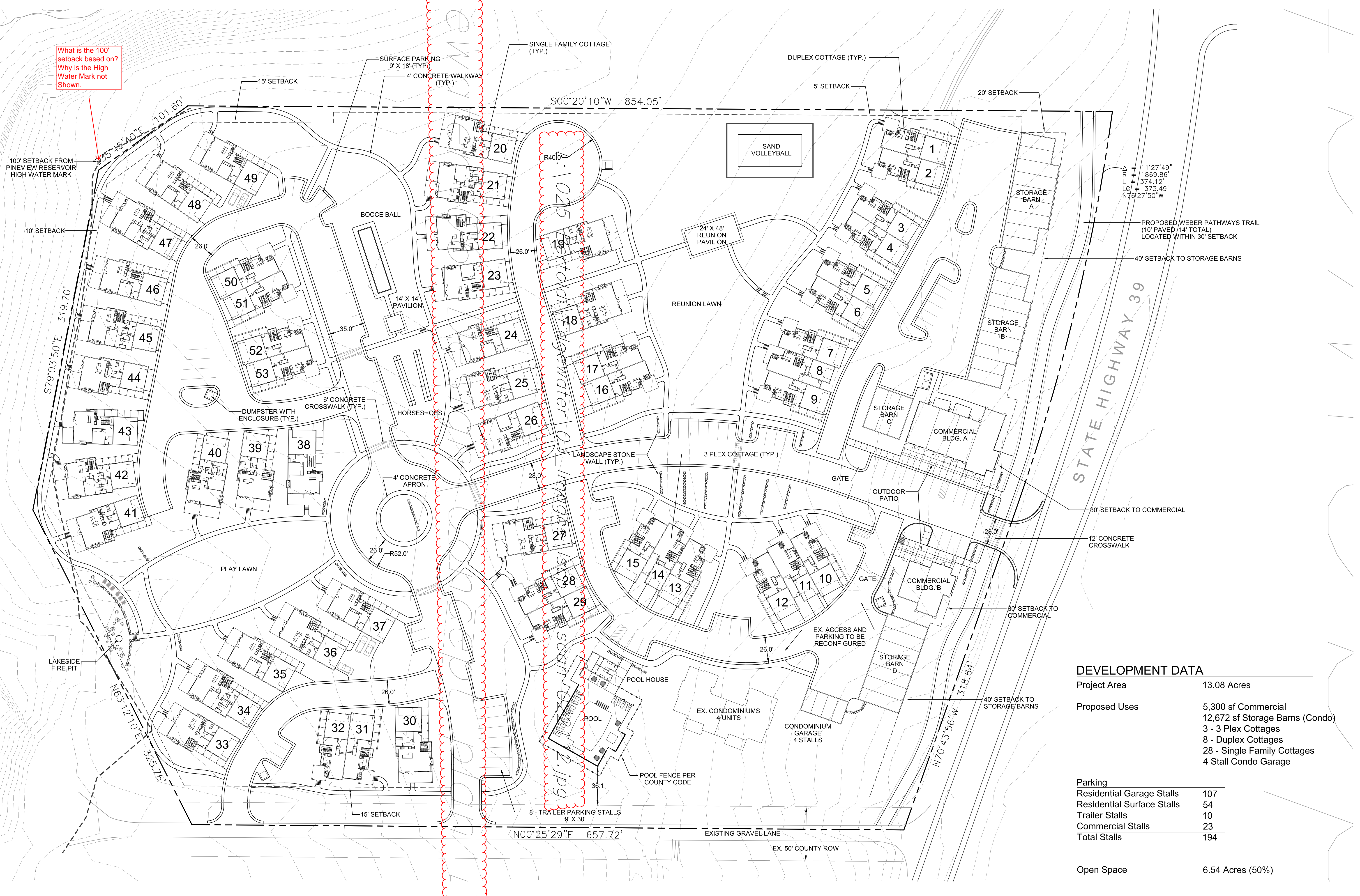


What is the 100' setback based on?  
Why is the High Water Mark not Shown.

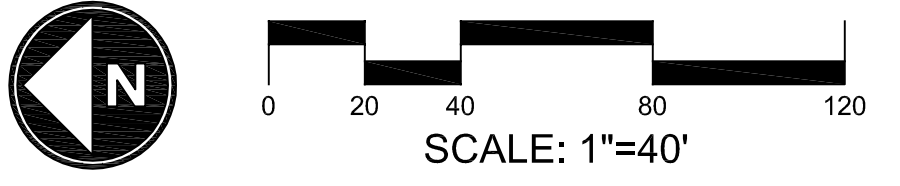


$\Delta = 11'27'49''$   
 $R = 1869.86'$   
 $L = 374.12'$   
 $LC = 373.49'$   
 $N76'27'50''W$

STATE HIGHWAY 39

**DEVELOPMENT DATA**

Project Area	13.08 Acres
Proposed Uses	5,300 sf Commercial 12,672 sf Storage Barns (Condo) 3 - 3 Plex Cottages 8 - Duplex Cottages 28 - Single Family Cottages 4 Stall Condo Garage
Parking	
Residential Garage Stalls	107
Residential Surface Stalls	54
Trailer Stalls	10
Commercial Stalls	23
Total Stalls	194
Open Space	6.54 Acres (50%)



THIS DOCUMENT IS THE PROPERTY OF BERTOLDI ARCHITECTS © 2012

