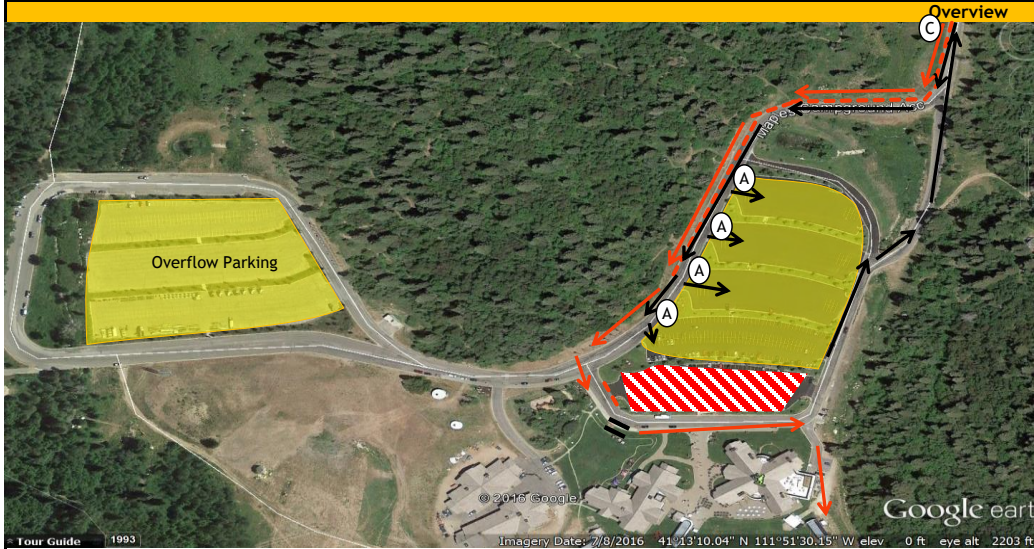
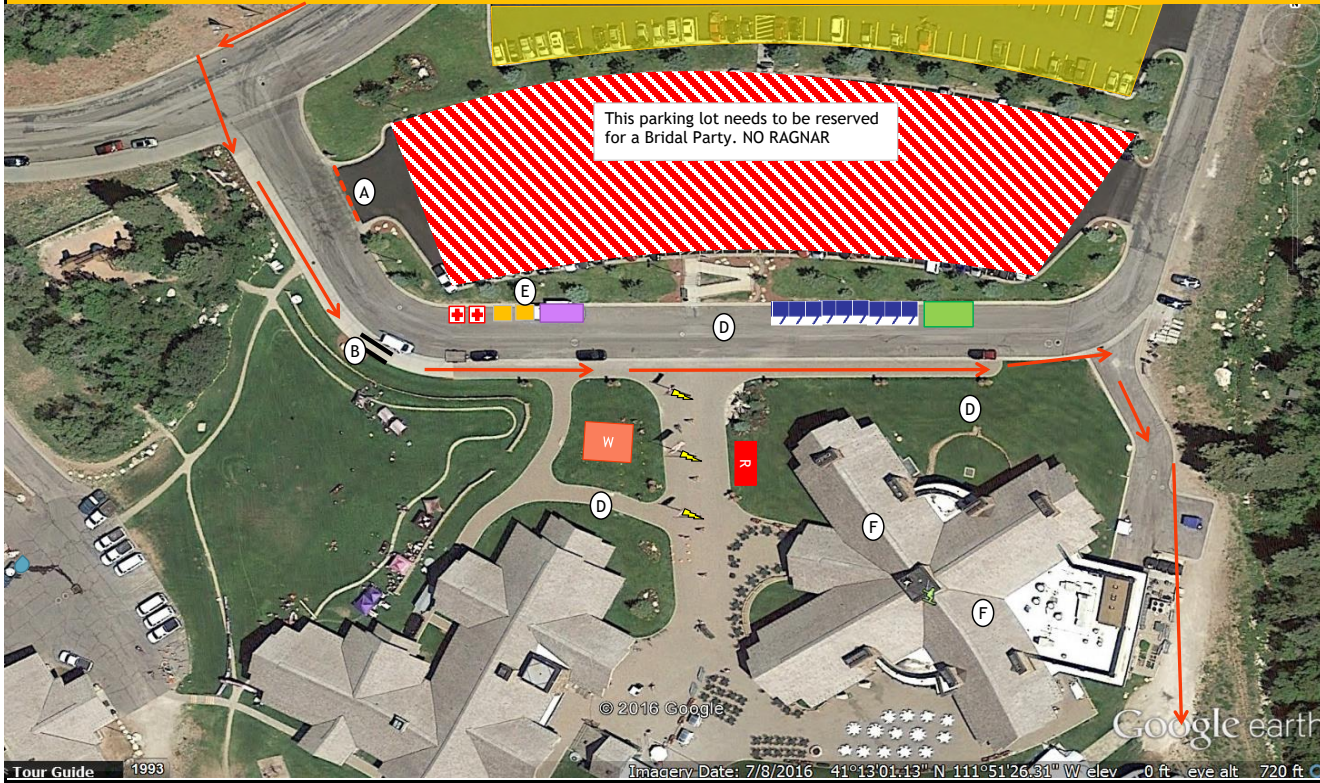


Exchange 12 Venue:	Resort	Location: Snowbasin Resort 3925 E Snowbasin Rd, Huntsville, UT 84317	Contact:	Night Time Hours 7:45 PM - 6:30 AM	
Max Parking Space	800	Key: Parking Cones & Tape Van's Path Runner's Path Chute Trash Box Toilets Dumpster Power Access Water Access Volunteer Merch Tent Reebok Tent Medic Orange Ragnar Tent No Parking - Reserved for Bridal Party Mountain Land Physical Therapy			
Peak Parking Needs	400				
Peak Time	6:38 PM				
Volunteer Shift Time					
Shift	Start	End			
Shift 1	11:15 AM	3:30 PM			
Shift 2	3:00 PM	7:15 PM			
Shift 3	6:45 PM	11:30 PM			
Shift 4					



Overview



Overview Notes	
CHUTE PLACEMENT	Place on sidewalk next to lawn
PARKING INSTRUCTIONS	There should be plenty of parking here but you will need to fill the lots in an orderly fashion. Make sure vans are not parking in the reserved parking lot- volunteers will need to be very clear on directing vans to parking
TRAFFIC CONCERNS	NA
VAN/RUNNER FLOW	If we start to use the Overflow parking lot, a volunteer should be stationed to hold runners until traffic is clear
PORT-A-POTTIE PLACEMENT	As shown, should not be very close to walk way
PRIVATE PROPERTY CONCERNS	

Other Notes

Cafeteria will be open inside. NO SLEEPING IS ALLOWED ON THE PROPERTY!
 Ensure that the parking lot is kept open for the Bridal Party. The wedding is at 5 PM
 Onsite Snowbasin Contact: Tim Eastley 801-564-4289

Volunteer Duties		
A	Manage parking flow, when slow, manage toilets and clean up exchange. Enforce parking lot reservation for Bridal Party	2
B	Manage chute, cross team off team list	2
C	Radioing incoming runner to volunteer at chute	3
D	Floating volunteers - help direct runners inside school for food, showers, and sleeping. Monitor garbage boxes and check toilets when slow. DO NOT ALLOW CAMPING/SLEEPING ON LAWN. DIRECT TO VANS OR TO EXCHANGE 18	3
E	Water tent volunteer. Fill cups and water coolers. Manage toilets and clean up exchange	1
F	Monitor bathrooms, ensure that no "bathing" is happening in the sinks	2
		13

Inventory Items										
	Tents	Tables & table cloths	Tent Walls	Chairs	Volunteers	Cones	Cot	Medic Bin	80lbs Ice	Case water
TENT #1 WATER STATION & HQ	2	2	2	2	2	0	N/A	N/A	N/A	N/A
300-500 teams	No difference				3	N/A	N/A	N/A	N/A	N/A
TENT #2 MEDIC	1	0	3	2		9	1	1	80lbs	1
300-500 teams	1	2	3	2		0	2 (450+ teams)	1	80lbs	1