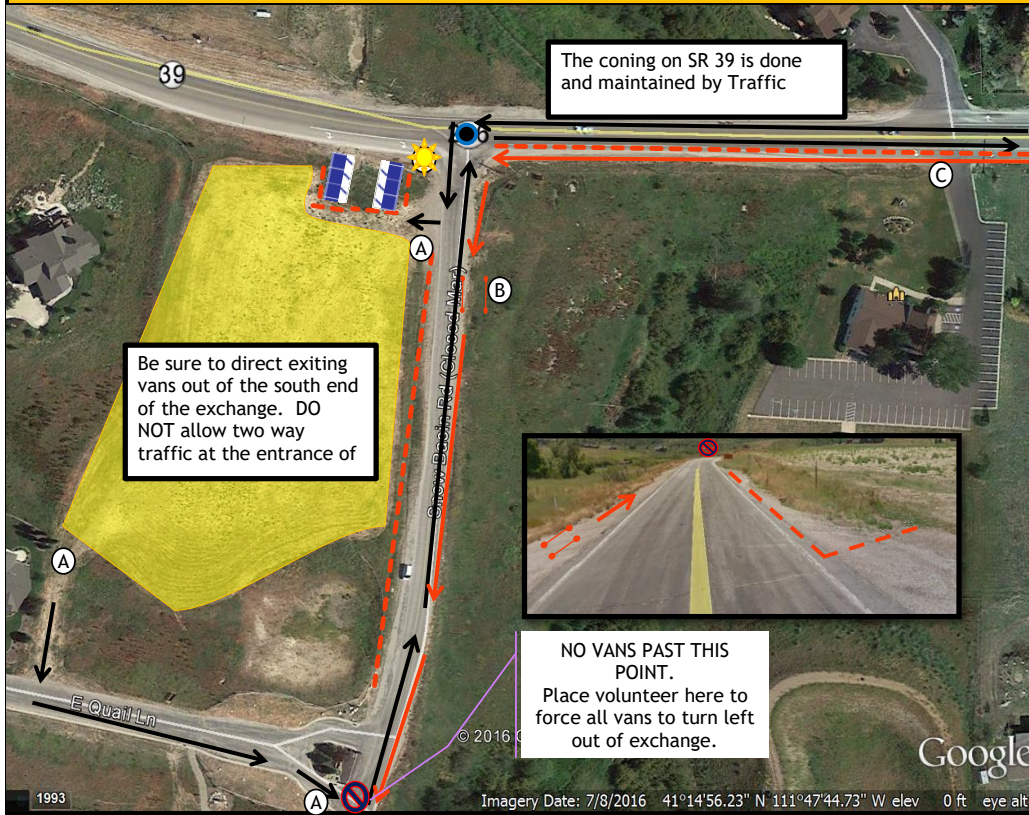


Exchange 11 Venue:	Field	Location: GPS:	Ogden Canyon Rd (SR-39) & Old Snowbasin Rd	Venue Contact:	Night Time Hours 7:45 PM - 6:30 AM
Max Parking Space	150	Volunteer Shift Time		Key:	Toilets
Peak Parking Needs	71	Shift	Start End	Chute	Light Tower
Peak Time	4:48 PM	Shift 1	1:30 PM 6:00 PM	Cones & Tape	Volunteer
		Shift 2	5:30 PM 10:00 PM	Van's Path	Police Officer
		Shift 3		Runner's Path	Parking

Overview



Overview Notes

CHUTE PLACEMENT	Place chute on shoulder as far off the road as possible
PARKING INSTRUCTIONS	Vans should be directed in the front entrance and out the back exit. Try to keep the exchange as one way traffic flow.
TRAFFIC CONCERNS	Old Snowbasin Road is closed to Van traffic. Vans must proceed to Snowbasin via Trappers Loop.
VAN/RUNNER FLOW	Runners approach exchange on the south side of SR-39. The runners need to continue along the east side of Old Snowbasin road. Place chute on East side of Old Snowbasin Road. Teams should be corralled on west side behind coning. Only the next runner should cross the road.
PORT-A-POTTIE PLACEMENT	
PRIVATE PROPERTY CONCERNS	
OTHER DETAIL NOTES	Exchange Bin, Binder, and cones on site should be cleaned up and stacked by Portable toilets for Course Set Up to pick up once the exchange has closed

Volunteer Duties

A	Manage parking flow, when slow, manage toilets & clean up exchange	3
B	Manage Chute, cross team off team list	1
C	Radioing incoming runner to volunteer at chute	1
		5