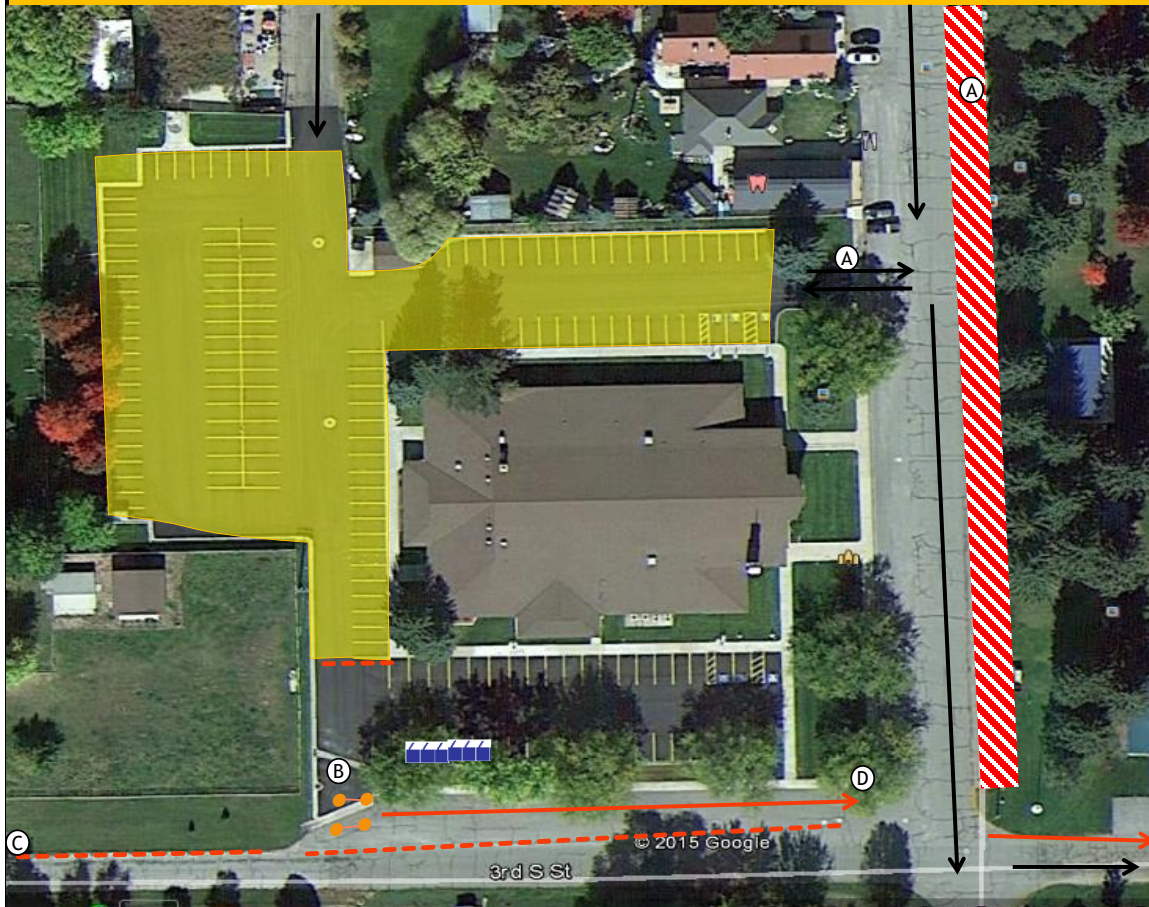


Exchange 9	Church	Location: LDS Church 277 Sout 7400 East, Huntsville, UT 84317	Venue Contact:	Night Time Hours 7:45 PM - 6:30 AM
Max Parking Space Peak Parking Needs Peak Time	126 96 3:38 PM	Volunteer Shift Time Shift Start End Shift 1 12:15 PM 5:00 PM Shift 2 4:30 PM 9:15 PM Shift 3	Key: Chute Cones & Tape Van's Path Runner's Path	Toilets Volunteer Parking

Overview



Overview Notes

CHUTE PLACEMENT	Place the chute at an angle in runner path parallel to coned off church driveway.
PARKING INSTRUCTIONS	Use the parking lot. There can be NO PARKING along the street. Use Volunteer A to help monitor this
TRAFFIC CONCERNS	
VAN/RUNNER FLOW	Use Volunteer D to hold runners so that traffic flows freely
PORT-A-POTTIE PLACEMENT	As shown on the layout
PRIVATE PROPERTY CONCERNS	
OTHER DETAIL NOTES	Exchange Bin, Binder, and cones on site should be cleaned up and stacked by Portable toilets for Course Set Up to pick up once the exchange has closed

Volunteer Duties

A	Manage parking flow, enforce no street parking rule, when slow, manage toilets & clean up exchange	2
B	Manage Chute, cross team off team list	1
C	Radioing incoming runner to volunteer at chute	1
D	Hold runner until traffic is clear and it is safe to cross. DO NOT DIRECT TRAFFIC!	1
		5